

Produmex Scan Customization Guide

Customization Technology

The customization process for the Produmex mobile applications consists of the following steps:

- Enable the Customization Assist mode and run the client application. Check the customization information of the screen.
- Create the custom field and/or the SAP user query.
- Restart the client application and check the results of the customization.

Many screens of Produmex mobile applications are customizable with SAP Business One's queries. The used query have to be named specifically based on the screen it is used on. The query names, and parameters can be found with the help of the 'Customization Assist'. The query result column names indicate which fields to set.

Supported customization types:

- Preset field data
- Validation: The system checks if the entered values are correct during a 'validate' or a 'button' event.
- Add new fields/Hide existing fields

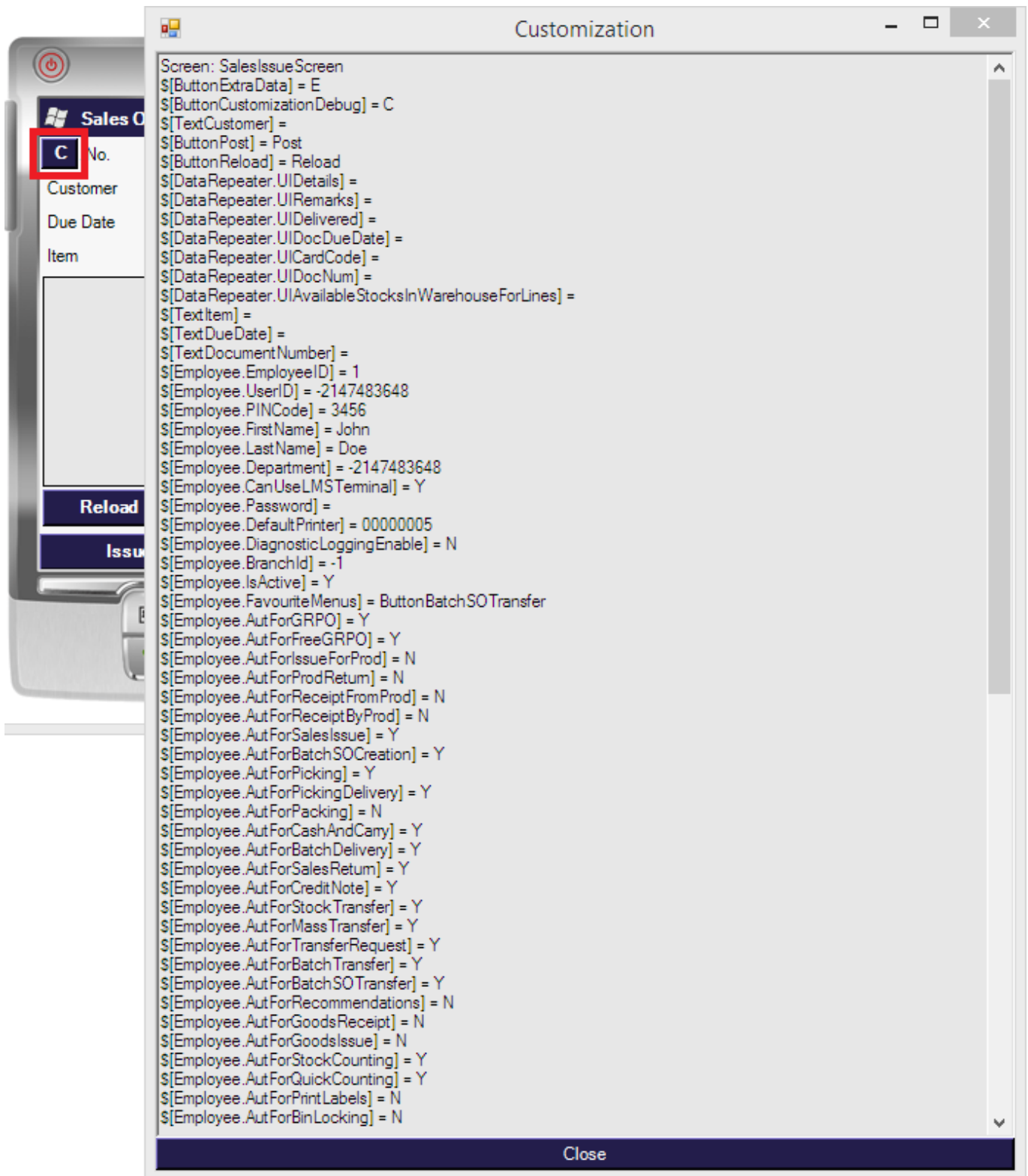
1. Configure and run client application

1.1. Enable the Customization Assist

To see information regarding the customization possibilities enable the Customization Assist mode.

The Customization Assist mode is only needed to see customization possibilities. It is not required to be enabled during normal operations.

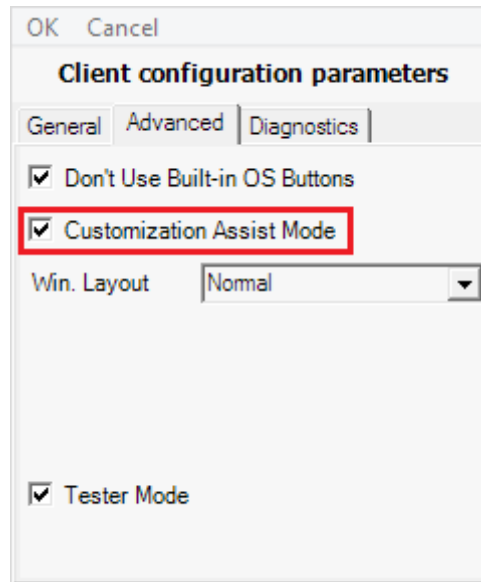
Press the **C** button on the top of the screen. The 'Customization' screen will open up. On the Customization screen the possible parameters for customization with their current value and the customizable events are listed.



1.2. Run client application

After the Customization Assist Mode has been activated, run the Produmex client application. Go to the screen to be customized.

Start the Produmex Scan Configuration application. On the 'Advanced' tab tick the 'Customization Assist Mode' checkbox to enable the Customization Assist mode.



2. Customization

2.1. Create custom field

Open the Customization Fields table in SAP Business One via: Tools > User Defined Windows > BXCUSTFD.

Field	Description	Value
Field Name	This name will be used in the custom queries. On the Customization window the field will appear with this name. If the name of an existing field is added, the other properties can be changed. (For example this hide an existing field set the 'Visibility' to 'No')	Please see: Produmex Scan Customization Examples Produmex Manufacturing Customization Examples
Field Type	Type of the field.	Supported field types: <i>String(0)</i> : Creates a new input fields. It will have a 'validate' and 'validate after' event. <i>Button(13)</i> : Creates a new button. It will have a 'click' and 'click after' event.
Label	The displayed text. It is also possible the change the label of an existing field.	
Module	The name of the mobile solution.	Produmex Scan: <i>BXMobileWH9</i> Produmex PDC: <i>BXPPSMobilePDC</i> Produmex Operator: <i>BXMobileWorker</i>
On External Form	Defines whether the new field is added to a new screen or not. If yes, a new button will appear to open the external screen.	Yes/No

Field	Description	Value
Position Data	Object placement can be changed in this field.	x: - horizontal position (% of screen width from left) y: - vertical position (% of screen height from top) w: - width (% of screen width) h: - height (% of screen height from top) f: - font size (pixel) only on 'Button' Only integer values are allowed. Separate the different parameters with the ';' character. Example: x:1;y:70;w:50;h:9
Protected	If set to yes, the field will be displayed on the proceeding screen as well. The entered value in read-only mode.	Yes/No
Read Only	Defines whether the field will be read only or not.	Yes/No
Screen	The screen name.	The screen name can be found in the first line on the Customization window.
Visible	Defines whether the field is displayed on the screen or not.	Yes/No

2.2. Create an SAP user query

Open the Query Manager in SAP Business One via: Tools > Queries > Query Manager

Create the user query.

The name of the query defines when it will be executed, therefore save it as the name of the event when you would like to run the user query.

EXAMPLE: The user query that runs when the 'GR PO' screen is loaded in Produmex Scan is 'BXMmobileWH9_GoodsReceiptPOScreen_Load'

For information about the input values and results please see the related [Customization example](#).

2.2.1. Supported message types

The following message types can be used in user queries for Produmex Scan:

- **I: Information**

A pop up information message will be prompted, that needs user confirmation (OK). The event will execute.

- **E: Error**

A pop up error message will be prompted, that needs user confirmation (OK). The event will not execute.

• **YM: Yes/No with message box**

A pop up confirmation message will be prompted, that can be answered with yes or no. The event will execute depending on user choice.

3. Restart the application

To apply the customization restart the mobile application.

You must restart the application every time a new user query is created but it is not necessary to restart the application when modifying an existing query.

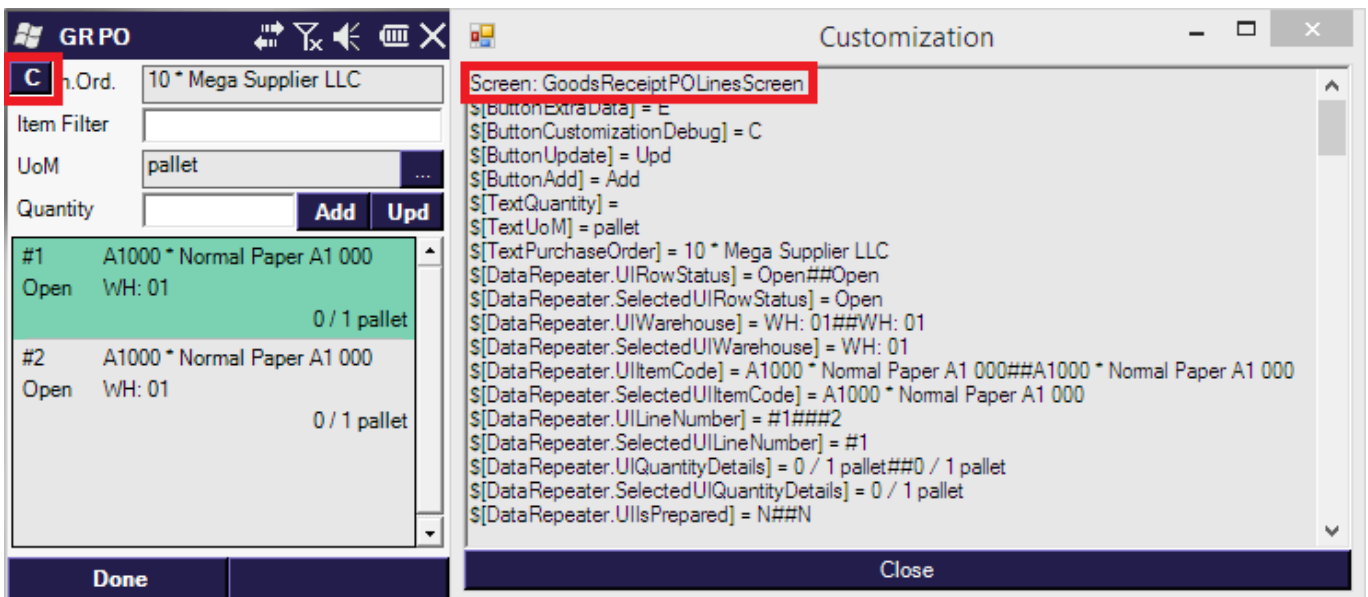
Customization Examples

1. Goods Receipt PO

1.1. Set (user) fields in GR PO

The customization makes possible to set additional fields (SAP or user fields) in the Goods Receipt PO document from.

Go to GR PO Lines screen, and open Customization window. Here you can see the name of this screen: *GoodsReceiptPOLinesScreen*

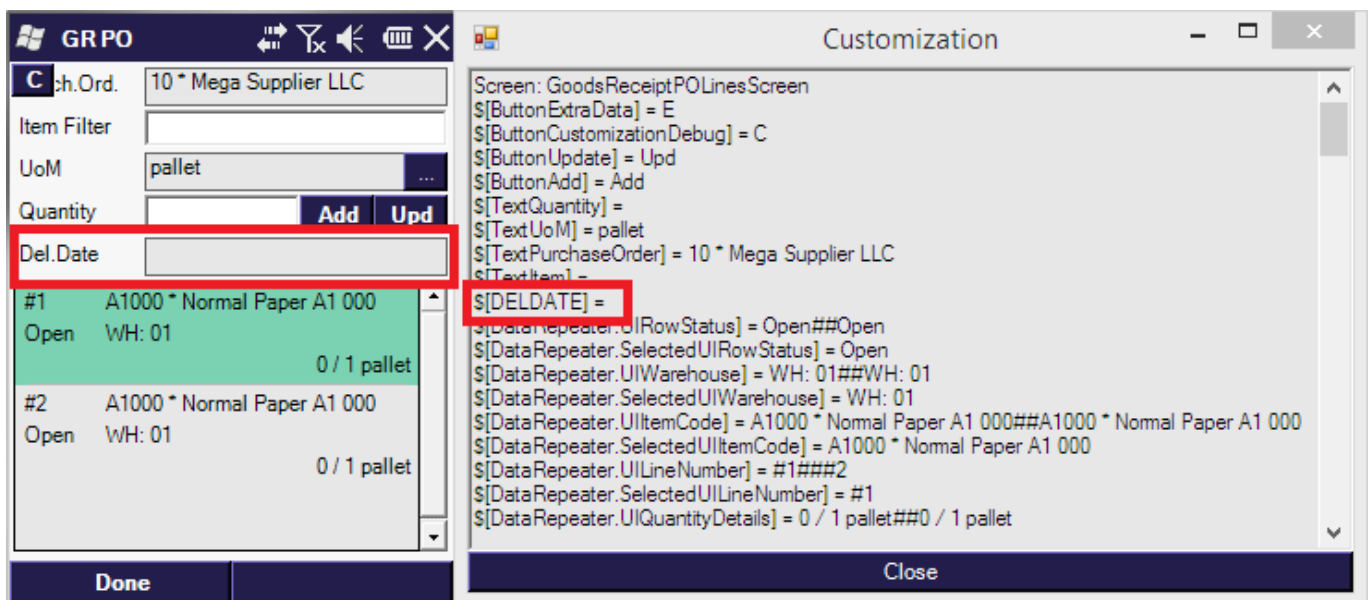


To add new fields, open the [CustomizationFields](#) User-Defined window in SAP Business One. Use the

recommended parameters as below:

Screen	Module	Label	Field Name	Read Only
GoodsReceiptPOLinesScreen	BXMobileWH9	Del.Date	DELDATE	YES

Now you are able to load data into this new field. To do it, you have to use the *BXMobileWH9_GoodsReceiptPOLinesScreen_Load* user query.

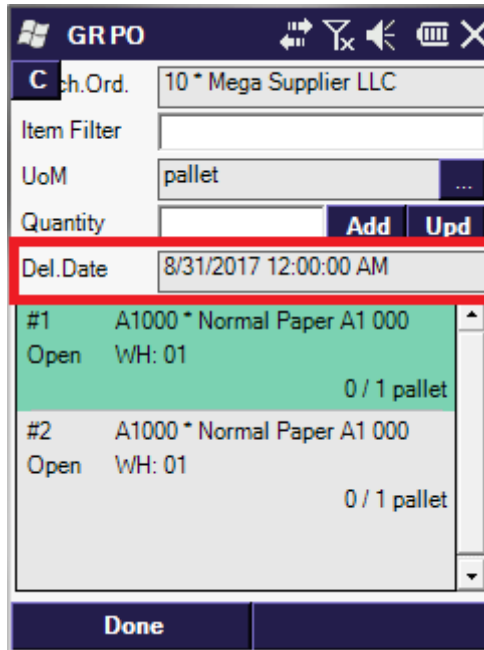


If you want to select the delivery date of the purchase order, you will need the purchase order number. You can check the field name on customization screen.

In the example: `[$[TextPurchaseOrder]] = 10 * Mega Supplier LLC`

You have to use `[$[TextPurchaseOrder]]` field and you have to split the string in the query. If you want to read the data from the field, then you have to use `$` character.

```
SELECT DocDueDate as [DELDATE] FROM OPOR
WHERE DocNum = SUBSTRING( $[TextPurchaseOrder], 0, CHARINDEX('*', $[TextPurchaseOrder], 1) - 1)
```



1.2. Set Freight

If is possible to set the Freight costs/lines in the created Goods Receipt PO with user query. Please see [2.1 Set Freight in Delivery document](#) for the example query.

UserQuery: bx_mobile_wh9_document_additionalexpenses (Category: BXMobileWH9)	
<p>Parameters [%1] - employeeID [%2] - TerminalID [%3] - Head Code from Mobile Transaction table (@BXPLMSMOBTHD.Code) [%4] - grouped Head Codes (string, list), separated with # characters, only applicable for grouped Purchase Order/APReserve invoice → Goods Receipt PO</p>	<p>Results Zero, one or more rows for the Freight charges to be created. The result columns can have the names: * BO_LineTotal = the LineTotal field, amount of money (mandatory) * BO_ExpenseCode = Expense Code (integer) (mandatory)</p>

1.3. Batch number generation

In the Goods Receipt PO process, the system can automatically generate batch numbers when entering the received quantities and bin locations. The batch number generation logic needs to be defined in a user query.

UserQuery: bx_mobile_wh9_get_new_batchnumber (Category: BXMobileWH9)	
<p>Parameters [%1]: employee ID (int) [%2]: terminal ID (nvarchar) [%3]: base document type (int) [%4]: base document entry (int) [%5]: base document line (int) [%6]: item code (nvarchar)</p>	<p>Results The user query should return the batch number in a column called BXBATNUM</p>

Example:

The following query will generate a batch number combining the supplier code and the current date:

```
SELECT T0.[CardCode] + ' - ' + CONVERT(varchar, GETDATE(), 112) AS 'BxBATNUM'
FROM OPOR T0 WHERE T0.[DocEntry] = [%4]
```

1.4. Serial number generation

In the Goods Receipt PO process, the system can automatically generate serial numbers when entering the received stocks. The serial number generation logic needs to be defined in a user query.

UserQuery: bx_mobile_wh9_get_new_serialnumber (Category: BXMobileWH9)	
Parameters [%1]: employee ID (int) [%2]: terminal ID (nvarchar) [%3]: base document type (int) [%4]: base document entry (int) [%5]: base document line (int) [%6]: item code (nvarchar)	Results The user query should return the serial numbers (multiple rows possible) in a column called BXSERNUM

1.5. Expiration date at GRPO/Inventory

The following fields can be used at BatchScreen or SerialScreen:

```
BATCH_EXPIRATION_DATE = "#ExpirationDate";
BATCH_MANUFACTURING_DATE = "#ManufacturingDate";
BATCH_ATTRIBUTE1 = "#Attribute1";
BATCH_ATTRIBUTE2 = "#Attribute2";
BATCH_DETAILS = "#Details";
```

```
SERIAL_EXPIRATION_DATE = "#SerialExpirationDate";
SERIAL_MANUFACTURING_DATE = "#SerialManufacturingDate";
SERIAL_ATTRIBUTE1 = "#SerialAttribute1";
SERIAL_ATTRIBUTE2 = "#SerialAttribute2";
SERIAL_DETAILS = "#SerialDetails";
```

These fields can be added on the [CustomizationFields](#) table.

Example for batches:

Field Name	Label	Screen
#ExpirationDate	BBD	ReceiptFromProductionQuantitiesBatchScreen
#ManufacturingDate	ManufacturingDate	ReceiptFromProductionQuantitiesBatchScreen
#ExpirationDate	BBD	GoodsReceiptPOQuantitiesBatchScreen

2. Sales Orders

2.1. Set Freight in Delivery document

By default the Freight in the created Delivery document is 0. It is possible to customize Produmex

Scan so freight lines are added with a custom freight calculation algorithm. This algorithm receives a parameter which allows to query the items, quantities, base documents which will be used to create the new Delivery Document.

UserQuery: bx_mobile_wh9_document_additionalexpenses (Category: BXMobileWH9)	
Parameters	Results
[%1] - employeeID [%2] - TerminalID [%3] - Head Code from Mobile Transaction table (@BXPLMSMOBTHD.Code) [%4] - grouped Head Codes (string, list), separated with # characters, only applicable for grouped Purchase Order/APReserve invoice → Goods Receipt PO	Zero, one or more rows for the Freight charges to be created. The result columns can have the names: <i>BO_LineTotal</i> = the LineTotal field, amount of money (mandatory) <i>BO_ExpenseCode</i> = Expense Code (integer) (mandatory)

Example:

A combined query to copy expenses from Sales Orders and Purchase Orders.

Query name: *bx_mobile_wh9_document_additionalexpenses*

```

declare @salesOrderDocEntry int
SELECT @salesOrderDocEntry = U_BXPBsDcE
FROM [@BXPLMSMOBTLN]
WHERE U_BXPdCd = [%3] AND U_BXPBsDcT = 17 AND U_BXPDocTy = 15
-- 15-delivery, 17-sales order
IF @salesOrderDocEntry > 0
BEGIN
SELECT
    ExpsCode as BO_ExpenseCode,
    LineTotal as BO_LineTotal,
    17 as BO_BaseDocType,
    @salesOrderDocEntry as BO_BaseDocEntry,
    LineNum as BO_BaseDocLine
FROM RDR3
WHERE DocEntry = @salesOrderDocEntry AND Status <> 'C'
END
declare @purchaseOrderDocEntry int
SELECT @purchaseOrderDocEntry = U_BXPBsDcE
FROM [@BXPLMSMOBTLN]
WHERE U_BXPdCd = [%3] AND U_BXPBsDcT = 22 AND U_BXPDocTy = 20
-- 22-Purchase order, 20-Goods Receipt PO
IF @purchaseOrderDocEntry > 0
BEGIN
SELECT
    ExpsCode as BO_ExpenseCode,
    LineTotal as BO_LineTotal,
    22 as BO_BaseDocType,
    @purchaseOrderDocEntry as BO_BaseDocEntry,
    LineNum as BO_BaseDocLine
FROM POR3
WHERE DocEntry = @purchaseOrderDocEntry AND Status <> 'C'
END

```

This example user query looks at the Mobile Transaction (lines) table, filters for Base Document Type = Sales Order, finds the base Sales Order Document DocEntry. It then retrieves the freight expense records related to the Sales Order (from table RDR3), and extracts Expense Code and Line Total, so it essentially copies all the freight charges from the Sales Order without any calculation.

3. Pick Lists

3.1. Set Freight in Delivery

Please see: [2.1 Set Freight in Delivery document](#)

3.2. Set (user) fields in Delivery

It is possible to set the values of the Delivery Document which are created from the Produmex Scan Pick List screen.

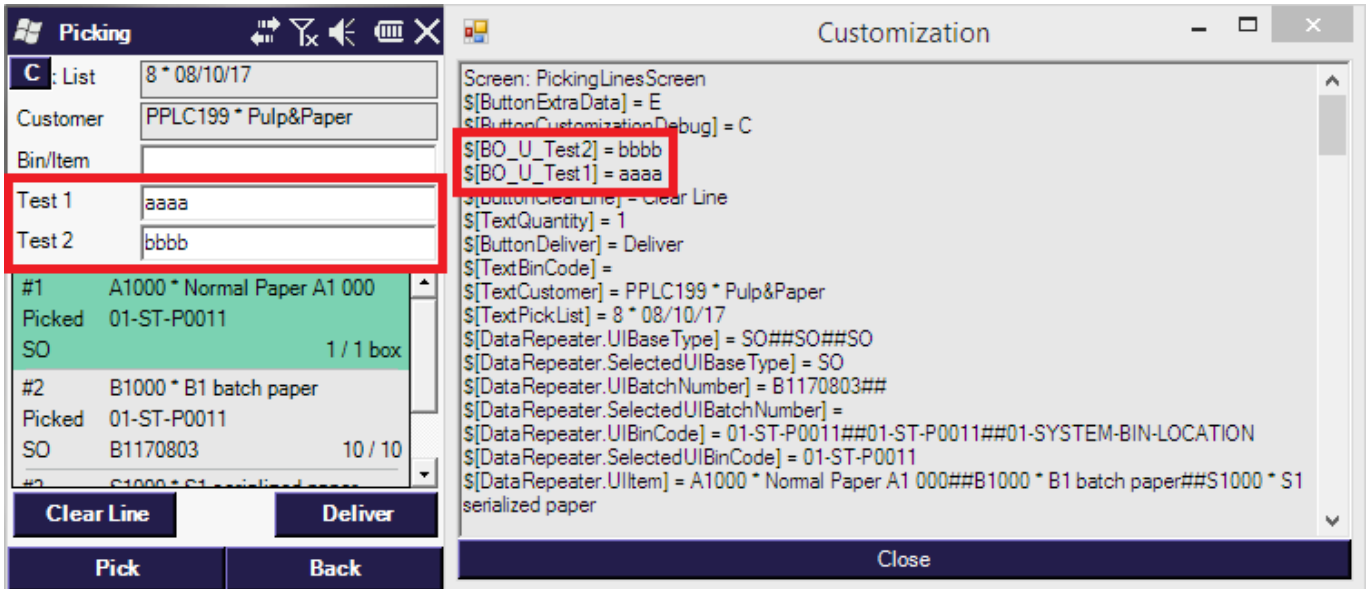
To set a field, you have to add a customization field to the Pick List Lines screen. The customization field name must be:

- **BO_U_XXField1** to set Delivery Document U_XXField1 custom field
- **BO_FieldName** to set Delivery Document SAP internal field by API name. In this case, the field name must match the DI API name. Example: BO_JournalMemo

In the [Customization Fields](#) user table, it is important that the Field Name is BO_U_*and it must match the UDF name (with a U_Prefix), eg. BO_U_Test1 → Test1 userdefined field. The Label can be anything.

Example:

Screen	Module	Label	Field Name
PickingLinesScreen	BXMobileWH9	Test 1	BO_U_Test1
PickingLinesScreen	BXMobileWH9	Test 2	BO_U_Test2



When pressing the Delivery button on the Pick List lines screen, these field values will be used in the newly created Delivery Document.

3.3. Pick List screen - customize list

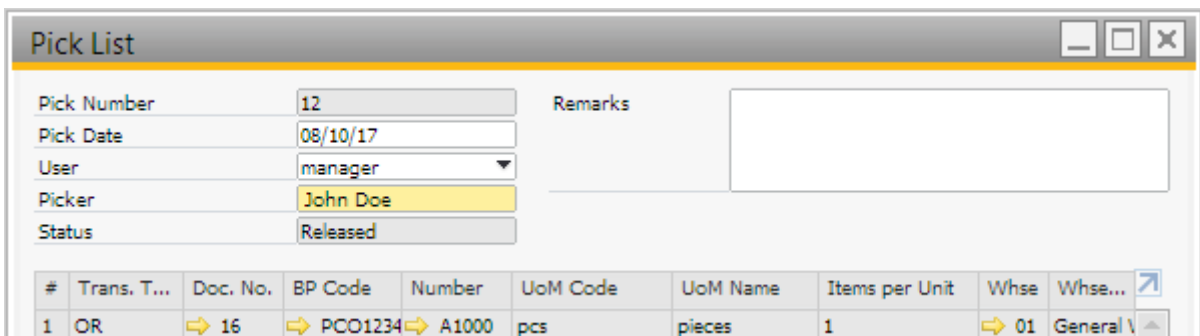
With the default settings, only open pick lists that have not been started by anyone are displayed, but the original program logic can be overridden by customization.

UserQuery: bx_mobile_wh9_picklists_query_custom (Category: BXMobileWH9)	
<p>Parameters</p> <ul style="list-style-type: none"> [\$AbsEntry] [\$CardCode] [\$EmployeeNo] - logged in employeeID [\$ItemCode] [\$PickDate] [\$WarehouseCode] 	<p>Results</p> <p>A table with multiple rows with a single column (integer) with PickList AbsEntry values. (OPKL.AbsEntry)</p>

Example:

With the example user query the list of picklists is filtered down to picklist assigned to the employee. We used the 'Picker' field on the Pick list to assign the employee to the pick list.

Please note: The Picker field must be in the 'FirstName LastName' or 'FirstName MiddleName LastName' format for the example user query to work.



The example user query name: *bx_mobile_wh9_picklists_query_custom*

```
IF ${AbsEntry} IS NOT NULL
BEGIN
    SELECT AbsEntry
    FROM OPKL WHERE AbsEntry = ${AbsEntry} AND Status <> 'C'
END
ELSE
BEGIN
    SELECT AbsEntry
    FROM OPKL
    WHERE Name = (SELECT firstName + ' ' + ISNULL(middleName + ' ', '') +
lastName
    FROM OHEM
    WHERE empID = ${EmployeeNo}) AND Status <> 'C'
    ORDER BY AbsEntry
END
```

This simple example only filters for employee or PickListNo, but doesn't respect other filters like Customer, Item, DueDate, Warehouse. It also allows the employee to enter a PickListNo and allows him to select that pick list even if he's not assigned for it.

4. Query Stocks

4.1. Override list

It is possible to override the list of items on the Query Stocks screen.

This is the same screen that can be opened from Pick List and from other modules in Produmex Scan when pressing the Find Stocks button, so the custom logic is also relevant for those cases.

UserQuery: bx_mobile_wh9_querystocks_query_custom (Category: BXMobileWH9)	
Parameters \${Warehouse} \${BinLocation} \${ItemCode} \${BatchNumber} (\${[..] - other user fields from screen)	Results A table with multiple rows with specific column names: - Warehouse - BinLocation - ItemCode - ItemName - ManagedBy (Batch: 10000044, Serial: 10000045, None: -1) - OnHandQuantity (in inventory UoM)

Example:

This custom query returns items sorted by quantity (descending).

Please note: This query doesn't filter by batch input parameter, only Warehouse, ItemCode and BinLocation.

Query name: *bx_mobile_wh9_querystocks_query_custom*

```
-- return maximum 20(+20) matches by filters, ordered by quantity descending
-- first select is for bin-activated warehouses
SELECT TOP 20 OIBQ.WhsCode as Warehouse, OBIN.BinCode as BinLocation,
OIBQ.ItemCode, OITM.ItemName,
CASE
    WHEN OITM.ManSerNum = 'Y' THEN 10000045
    WHEN OITM.ManBtchNum = 'Y' THEN 10000044
    ELSE -1 END as ManagedBy, OIBQ.OnHandQty as OnHandQuantity FROM OIBQ
JOIN OBIN ON (OBIN.AbsEntry = OIBQ.BinAbs)
JOIN OITM ON (OITM.ItemCode = OIBQ.ItemCode)
WHERE (OIBQ.ItemCode = ${ItemCode} OR ${ItemCode} = '')
    AND (OIBQ.WhsCode = ${Warehouse} OR ${Warehouse} = '')
    AND (OBIN.BinCode = ${BinLocation} OR ${BinLocation} = '')
    AND OnHandQty > 0
UNION
-- this second select is for non-bin warehouses
SELECT TOP 20 OITW.WhsCode as Warehouse, '' as BinLocation, OITW.ItemCode,
OITM.ItemName,
CASE
    WHEN OITM.ManSerNum = 'Y' THEN 10000045
    WHEN OITM.ManBtchNum = 'Y' THEN 10000044
    ELSE -1 END as ManagedBy, OITW.OnHand as OnHandQuantity FROM OITW
JOIN OITM ON (OITM.ItemCode = OITW.ItemCode)
JOIN OWHS ON (OWHS.WhsCode = OITW.WhsCode)
WHERE OWHS.BinActivat = 'N'
    AND (OITW.ItemCode = ${ItemCode} OR ${ItemCode} = '')
    AND (OITW.WhsCode = ${Warehouse} OR ${Warehouse} = '')
-- order by quantity descending
ORDER BY OnHandQuantity DESC
```

5. General for multiple processes

5.1. Creating documents as drafts

It is possible to control whether the documents should be created as drafts or as real documents when posted from Produmex Scan for the following documents:

- Goods Receipt
- Delivery
- Stock Transfer

The controlling logic must be defined with a user query.

UserQuery: bx_mobile_wh9_document_creation_type (Category: BXMobileWH9)	
Parameters [%1]: employee ID (int) [%2]: terminal ID (nvarchar) [%3]: mobile transaction head code (nvarchar)	Results The user query should return the result in a column called BXDOCTYP. The result must be an integer, and the following values are supported: - 0: real document - 1: draft

For example, with the following logic, all goods receipt PO documents (doc. type = 20) will be created as drafts, while the other documents are created as real documents:

```
SELECT CASE T0.[U_BXPDocTy]
WHEN 20 THEN 1
ELSE 0 END as 'BXDOCTYP'
FROM [dbo].[@BXPLMSMOBTHD] T0 WHERE T0.[Code] = [%3]
```

6. Special customization

You can use this special customization to manipulate the loaded data.

6.1. Special customization queries

6.1.1. Query Stocks

User query: bx_mobile_wh9_querystocks_query_custom	
Parameters \$[ItemCode], \$[Warehouse]	Query fields Warehouse, BinLocation, ItemCode, ItemName, ManagedBy, OnHandQuantity

This example will order the result by batch number.

```
SELECT TOP 20 OIBQ.WhsCode as Warehouse, OIBQ.BinCode as BinLocation,
OIBQ.ItemCode, OITM.ItemName,
CASE
    WHEN OITM.ManSerNum = 'Y' THEN 10000045
    WHEN OITM.ManBtchNum = 'Y' THEN 10000044
    ELSE -1 END as ManagedBy, OIBQ.OnHandQty as OnHandQuantity
FROM OIBQ
    JOIN OIBN ON (OIBN.AbsEntry = OIBQ.BinAbs)
    JOIN OITM ON (OITM.ItemCode = OIBQ.ItemCode)
    JOIN OBBQ ON (OBBQ.BinAbs = OIBQ.BinAbs)
    JOIN OBTN ON (OBBQ.SnBMDAbs = OBTN.AbsEntry)
WHERE
```

```
(OIBQ.ItemCode = ${ItemCode} OR ${ItemCode} = '')
AND (OIBQ.WhsCode = ${Warehouse} OR ${Warehouse} = '')
AND (OBBQ.ItemCode = ${ItemCode} OR ${ItemCode} = '')
AND (OBBQ.WhsCode = ${Warehouse} OR ${Warehouse} = '')
AND OIBQ.OnHandQty > 0
AND OBBQ.OnHandQty > 0
ORDER BY OBTN.DistNumber
```

6.1.2. Pickinglist

User query: bx_mobile_wh9_picklists_query_custom	
Parameters \${AbsEntry}, \${CardCode}, \${EmployeeNo}, \${ItemCode}, \${PickDate}, \${WarehouseCode}, \${BinLocationCode}	Query fields AbsEntry

On the pick list screen, you can use custom fields in the custom query.

Example:

Add a new custom field 'CFEmpID' for employee input on the [CustomizationFields table](#).

Field Name	Label	Screen
CFEmpID	EmpID	PickingScreen

After the field is added it can be used in a custom query. Query name:

bx_mobile_wh9_picklist_query_custom

```
IF (${CFEmpID}='')
BEGIN
    SELECT AbsEntry FROM OPKL WHERE Status <> 'C'
    ORDER BY AbsEntry desc
END
ELSE
BEGIN
    SELECT AbsEntry FROM OPKL WHERE Status <> 'C' AND U_BXPEmpID=${CFEmpID}
    ORDER BY AbsEntry desc
END
```

6.1.3. Sales order lines

User query: bx_mobile_wh9_salesorderlines_query_custom	
Parameters \${DocEntry}	Query fields LineNum, BinCode

6.1.4. Sales issue

User query: bx_mobile_wh9_salesissue_query_custom	
Parameters \${DocNum}, \${CardCode}, \${DueDate}, \${ItemCode}, \${EmployeeNo}	Query fields DocEntry, ObjType

6.1.5. Goods Receipt PO

User query: bx_mobile_wh9_goodsreceiptpo_query_custom	
Parameters \${DocNum}, \${CardCode}, \${DueDate}, \${ItemCode}, \${EmployeeNo}	Query fields DocEntry, ObjType (optional, Orders: 17 (default))

6.2. Button customization

Example:

Automatically click on the 'Reload' button after scanning on the GR PO screen.

Query name: *BXMobileWH9_GoodsReceiptPOScreen_TextDocumentNumber_validate_after*

```
IF ${TextDocumentNumber} <> ''  
BEGIN  
SELECT 'ButtonReload' as 'Click$'  
END
```

The name of the button can be found in customization assist. A custom button also can be pressed. The two buttons at the bottom of the screen are called 'OK' and 'Option'

6.3. Custom message

You can send a message to employee is a custom event.

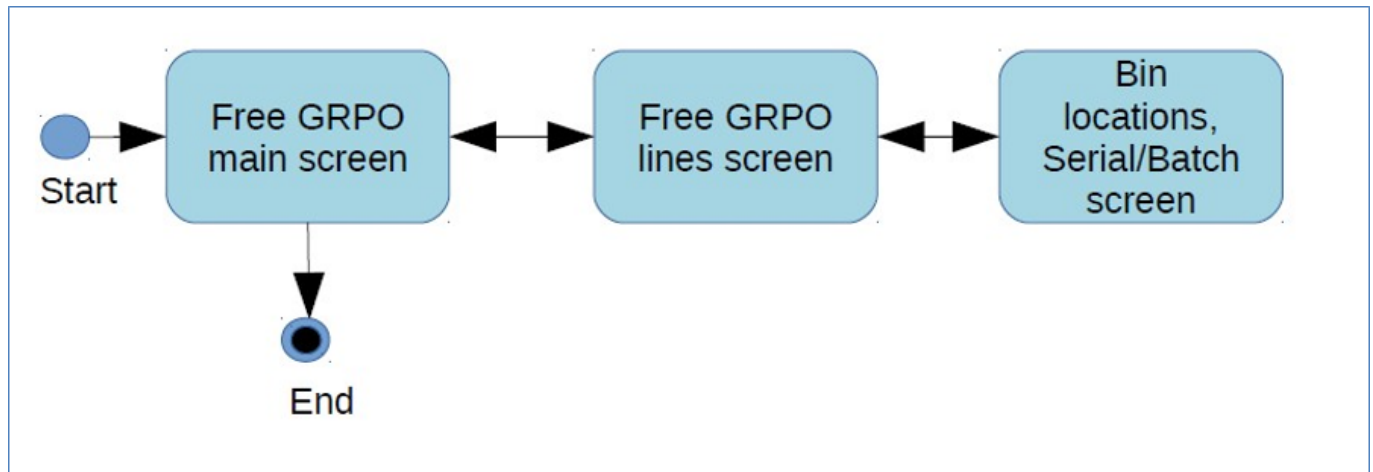
```
SELECT 'Information' as 'Message$', 'I' as 'MessageType$'
```

See the supported message types here: [Supported message types](#)

Customization Example: Micro-Vertical Solution for Serial Numbered Appliance Trading Organizations

This document describes how the Free Goods Receipt PO process in Produmex Scan was customized to fit a typical client and form a part of the micro-vertical solution for serial numbered appliance trader and similar companies. The customizations for each screen are described in detail.

1. Free Goods Receipt PO



In Produmex Scan, the Free Goods Receipt PO consist of 3 screens: a main screen used to start creating and preparing a new Goods Receipt document, a screen showing item lines and quantities and a detail screen on which the receiving bin location and serial numbers can be specified.

In standard Produmex Scan, these screens are optimized for receiving items sequentially, that is, start receiving ITEM1, enter to location, quantities or serial numbers, then start receiving ITEM2, enter location, quantities or serial numbers. This is a good solution in many cases when there are a couple of different items being received and they are grouped.

However, in this micro vertical solution the typical customer wants to receive many different items, a kind of assortment, which are not grouped by item code, maybe only by similar items. These items are also mostly serial numbered, which means the standard Produmex Scan way of receiving requires a lot of extra actions on the mobile user interface. The goal here was to allow the warehouse worker to use the bar code scanner button 99% of the time when doing the receiving. In practice this means: he will take the next piece of item (boxed), scan the item code bar code, then scan the serial number bar code, and then move on to the next piece of item (boxed).

During receipt, the items are moved to a temporary bin location, which is an empty pallet labelled with a bin code. When a pallet is full the warehouse worker can change the bin location to the next temporary bin location, the next pallet's location. In a later step, these pallets are moved to shelves with a forklift and the Produmex Scan Mass Transfer function, which moves all the stocks on one bin to another.

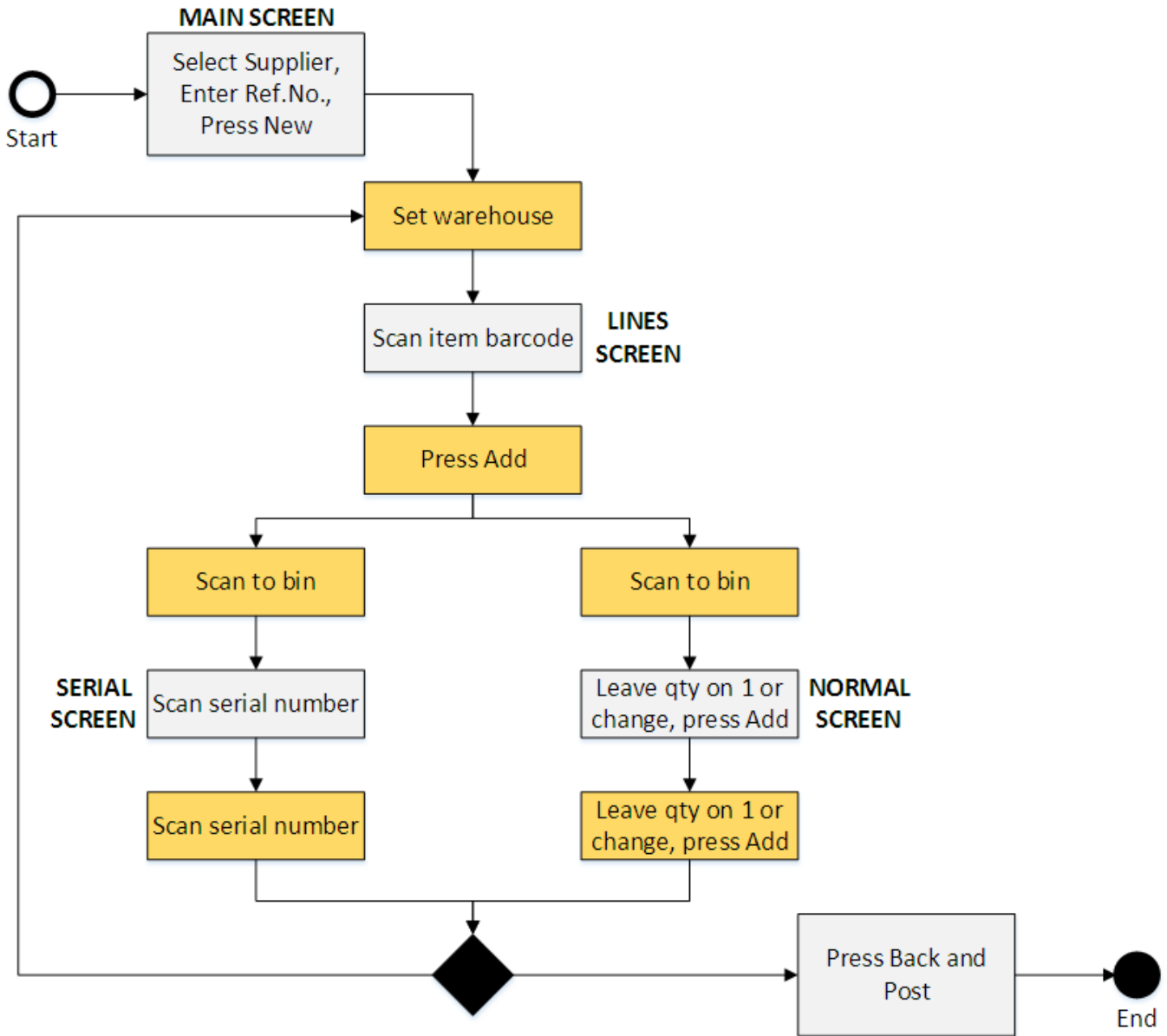
1.1. Comparison of the Original and New Receiving

Below you can see the original process for receiving.

The extra steps that this micro-vertical solution eliminates have been colored.

If we look at just the main action (from Set warehouse to just before Finish), receiving 10 serial items takes $10 \times 5 = 50$ actions this way. It needs 3 bar code scans (item, to bin, serial number) and 2

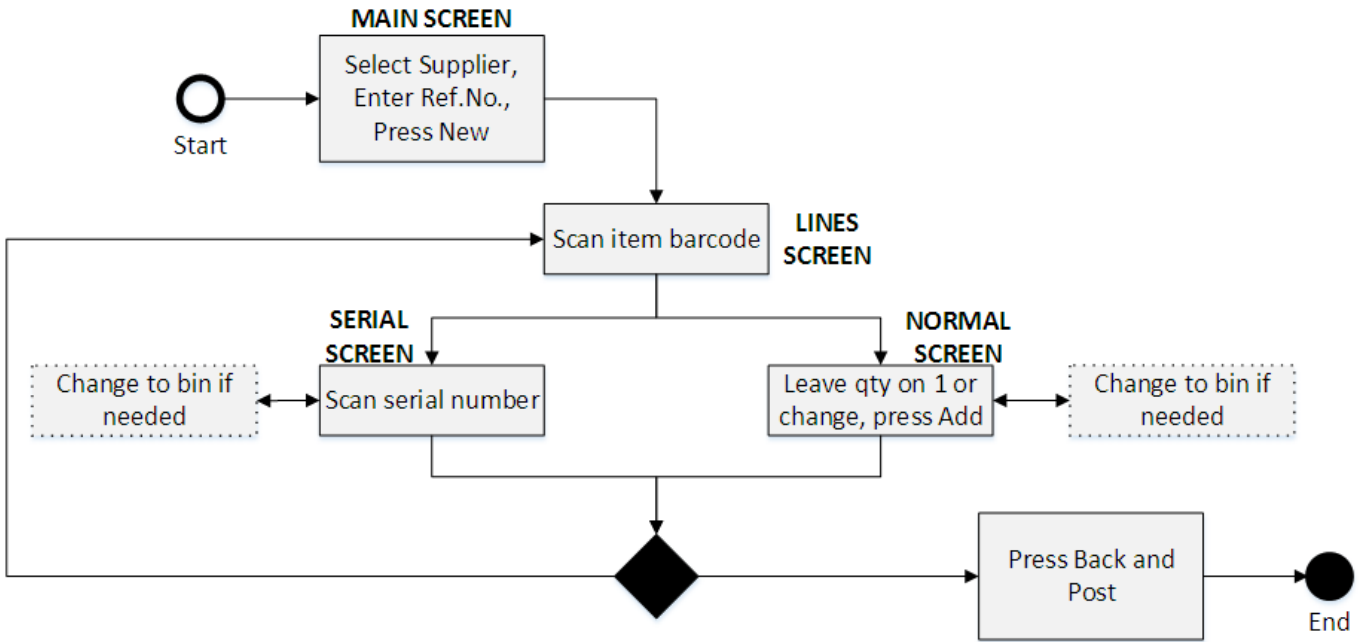
button presses (Add, Done) per item piece.



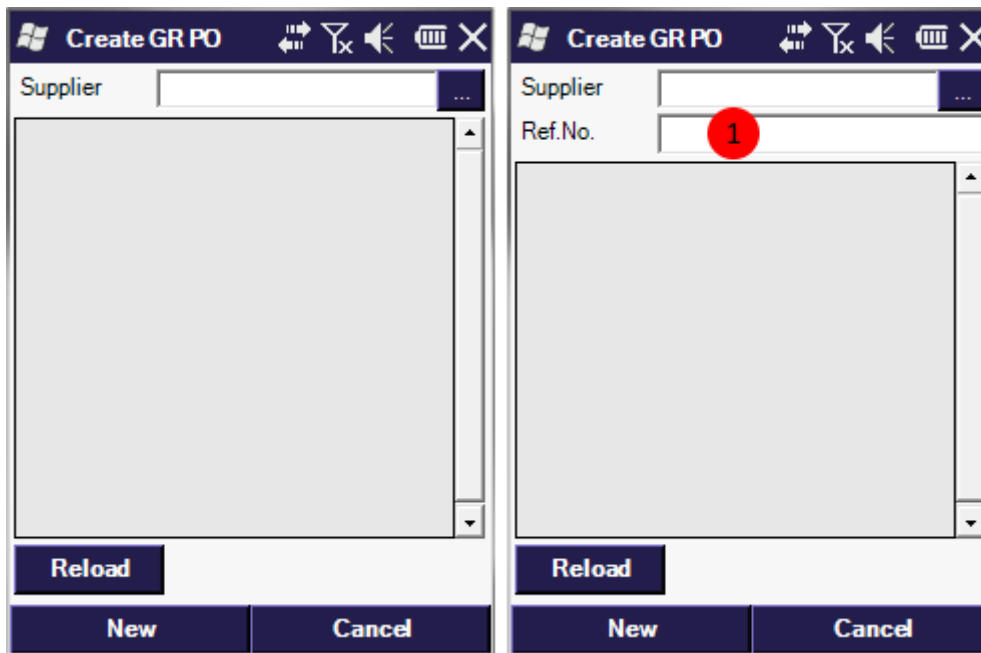
The following picture shows you the new process with these steps eliminated.

The core steps of receiving 10 items means $10 \times 2 = 20$ steps, plus changing the destination palette (to bin) occasionally. Even better, these actions are all bar code scans (item code, serial number), only 2 per item.

This shows how we optimized the process. Please also note, that there are other types of companies who might receive only a few different serial numbered items at once, for them, the original Produmex Scan process of scanning one item code then scanning a lot of serial numbers is much more effective.



1.2. Main Screen

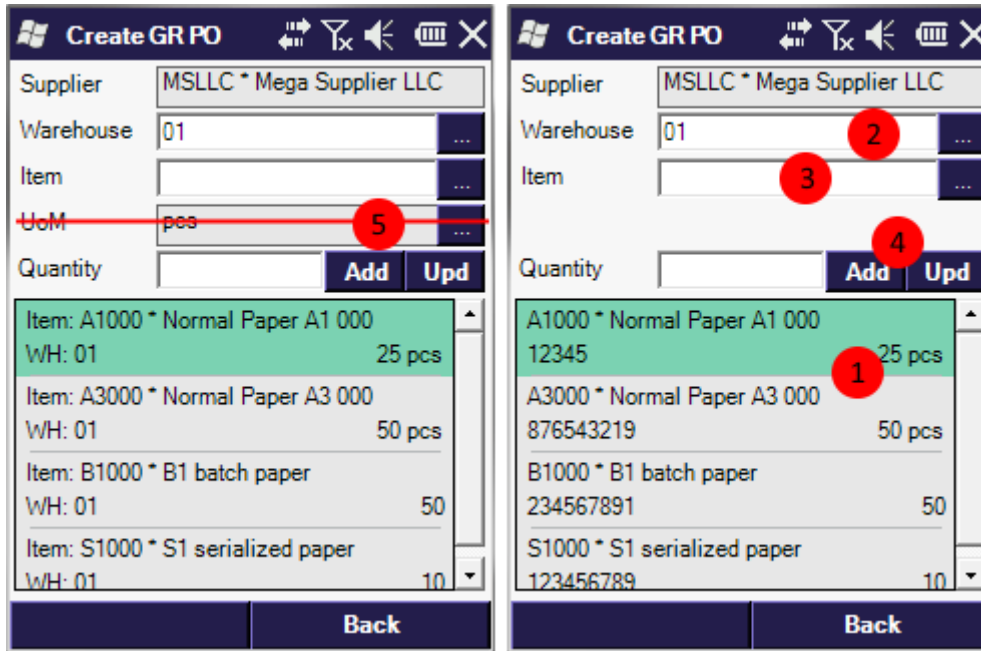


Changes:

1. Added Ref. No. field which will be copied to the new Delivery document. The user queries and custom fields for the above custom logic:

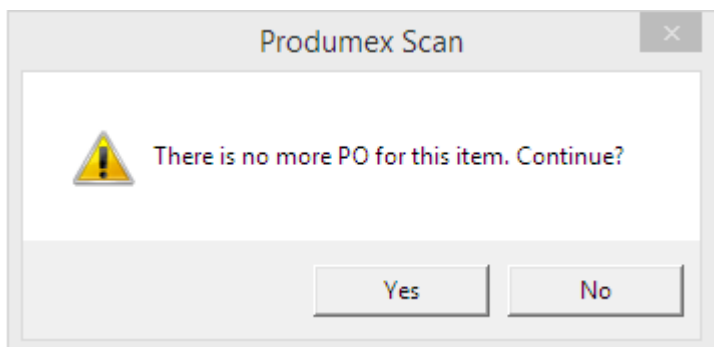
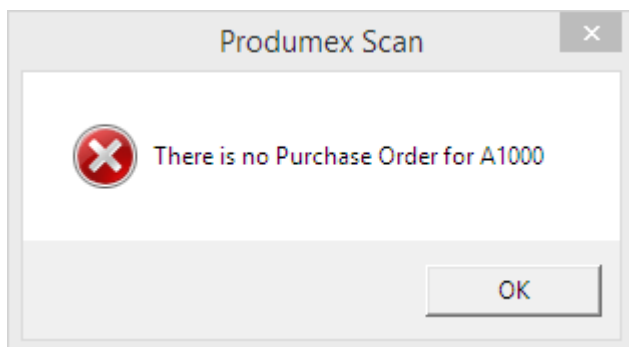
Field Name	Label	Screen
BO_NumAtCard	Ref.No.	CreateGoodsReceiptPOScreen

1.3. Item Lines Screen



Changes:

1. List items are changed to show Item Code + Item Name without prefix and to show bar code (EAN) in the second line instead of warehouse.
2. The warehouse is filled by the last selected warehouse for the employee by default and the value is saved if it has changed.
3. After the item has been scanned, it is checked if that item has any open Purchase Orders from the same supplier. If the item was valid and there are no problems, after scanning item code or bar code the screen automatically opens the next (bin locations) screen. No need to press the Add button explicitly.
4. The Add button checks if there is still open quantity for the given item from the same supplier. It gives a warning if there are no more open quantities.
5. UoM field is hidden because it's not used.



The user queries and custom fields for the above custom logic:

1.

User query: *BXMobileWH9_CreateGoodsReceiptPOLinesScreen_DataRepeater_InternalDataLoad*

```
-- Fill UIItem with item code and name
-- and UIWarehouse with OITM.CodeBars in list
SELECT SUBSTRING (S.splitdata,7,50) AS [DataRepeater.UIItem], C.CodeBars AS
```

```
[DataRepeater.UIWarehouse]
FROM dbo.SplitStringForDataRepeater($[DataRepeater.UIItem]) S, OITM C
WHERE C.ItemCode=SUBSTRING(S.splitdata,7,PATINDEX('%*%',S.splitdata)-8)
```

2.

Create a new user table 'SCANEMPWH' with the following fields:

- To Bin Location (ToWH)
- Employee ID (empID)

User query: *BXMobileWH9_CreateGoodsReceiptPOLinesScreen_TextWarehouse_validate_after*

```
-- Save Warehouse value to remember it for next time
IF (SELECT ISNULL(@SCANEMPWH.U_ToWH, ''))
FROM @SCANEMPWH WHERE U_empID = $[Employee.EmployeeID]) <>
$[TextWarehouse]
UPDATE @SCANEMPWH SET [U_ToWH]=$[TextWarehouse] WHERE U_empID =
$[Employee.EmployeeID]
```

3.

User query: *BXMobileWH9_CreateGoodsReceiptPOLinesScreen_TextItem_validate*

```
-- Check Item and see if it has open quantity in Purchase orders from this
supplier
-- if not, show error message
DECLARE @itemcode nvarchar (MAX)
SET @itemcode = $[TextItem]

IF NOT EXISTS SELECT (T0.ItemCode FROM OITM T0 WHERE T0.ItemCode=@itemcode)
SELECT @itemcode=T1.ItemCode FROM OBCD T1 WHERE T1.BCdCode=@itemcode

IF @itemcode<>' ' AND (SELECT ISNULL (SUM(T1.[OpenQTX]),0) FROM OPOR T0
INNER JOIN POR1 T1 ON T0.[DocEntry] = T1.[DocEntry]
WHERE T1.[ItemCode] = @itemcode AND T0.[CardCode] =
LEFT($[TextSupplier],PATINDEX('%*%', $[TextSupplier])-1))=0
SELECT 'There is no Purchase Order for '+@itemcode AS 'Message$', 'E' AS
'MessageType$'
ELSE SELECT '' AS dummy
```

User query: *BXMobileWH9_CreateGoodsReceiptPOLinesScreen_TextItem_validate_after*

```
-- If item is filled then set quantity to empty and press Add automatically
IF $[TextItem]<>' ' SELECT '' AS TextQuantity, 'ButtonAdd' AS Click$
```

4.

User query: *BXMobileWH9_CreateGoodsReceiptPOLinesScreen_ButtonAdd_click*

```
-- When add button is pressed check if there is open quantity
-- for that item in Purchase Orders
DECLARE @itemcode nvarchar(MAX)
SET @itemcode = $[TextItem]
```

```

IF NOT EXISTS (SELECT T0.ItemCode FROM OITM T0 WHERE T0.ItemCode=@itemcode)
SELECT @itemcode=T1.ItemCode FROM OBVD T1 WHERE T1.BCdCode=@itemcode

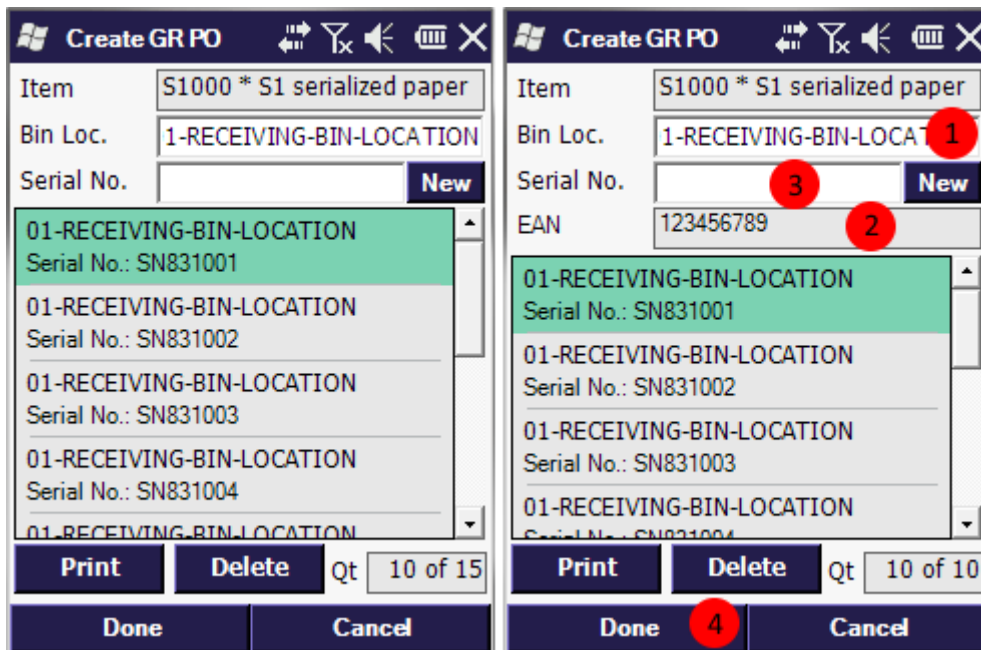
IF (SELECT SUM(CAST(LEFT(S.splitdata2,PATINDEX('% %',Splitdata2)-1) AS
DECIMAL (1,5)))
FROM
dbo.SplitStringForDataRepeater2($[DataRepeater.UIItem],[DataRepeater.
UIQuantity]) S
WHERE
@itemcode=SUBSTRING(S.splitdata,1,PATINDEX('%*%',S.splitdatda)-1))>=(SELECT
ISNULL (SUM(T1.[OpenQty]),0) FROM OPOR
T0.[CardCode]=LEFT($[TextSupplier],PATINDEX('%*%',[$[TextSupplier]])-1))
SELECT 'There is no more PO for this item. Continue?' AS 'Message$', 'YM' AS
'MessageType$'

```

5. To hide the UoM item on the screen, add a record to the [Customization Fields\(BXPCUSTFD\)](#) user table:

FieldName	Visible	Screen
TextUoM	NO	CreateGoodsReceiptPOLinesScreen

1.4. Serial Numbers Screen



Changes:

1. Save the last bin for next time and load it with last value
2. New field: EAN (Item's bar code) added and loaded with data
- 3., 4. After serial number has been scanned, automatically press the Done button to go to previous screen

The user queries and custom fields needed for these are:

1.

Create a new user table 'SCANEMPBL' with the following fields:

- To Bin Location (ToBL)
- Employee ID (empID)

User query:

BXMobileWH9_CreateGoodsReceiptPOQuantitiesSerialScreen_TextBinLocation_validate_after

```
-- Save Bin Location from screen to employee so it can be loaded next time
IF (SELECT ISNULL([@SCANEMPBL].U_ToBL, ''))
FROM [@SCANEMPBL] WHERE U_empID = $[Employee.EmployeeID]) <>
$[TextBinLocation]
UPDATE [@SCANEMPBL] SET [U_ToBL]=$[TextBinLocation] WHERE U_empID =
$[Employee.EmployeeID]
```

1., 2.

User query: *BXMobileWH9_CreateGoodsReceiptPOQuantitiesSerialScreen_Load*

```
-- On screen load fill bin location from saved value
-- and fill EAN field from OITM.CodeBars
SELECT
(SELECT [@SCANEMPBL].U_ToBL FROM [@SCANEMPBL] WHERE U_empID =
$[Employee.EmployeeID]) AS 'TextBinLocation',
(SELECT CodeBars FROM OITM
WHERE ItemCode=SUBSTRING($[TextItem],1,PATINDEX('%*%', $[TextItem])-2) ) AS
'EanCode'
```

2.

To show the new EAN field on the screen, add a record to the [Customization Fields\(BXPCUSTFD\)](#) user table:

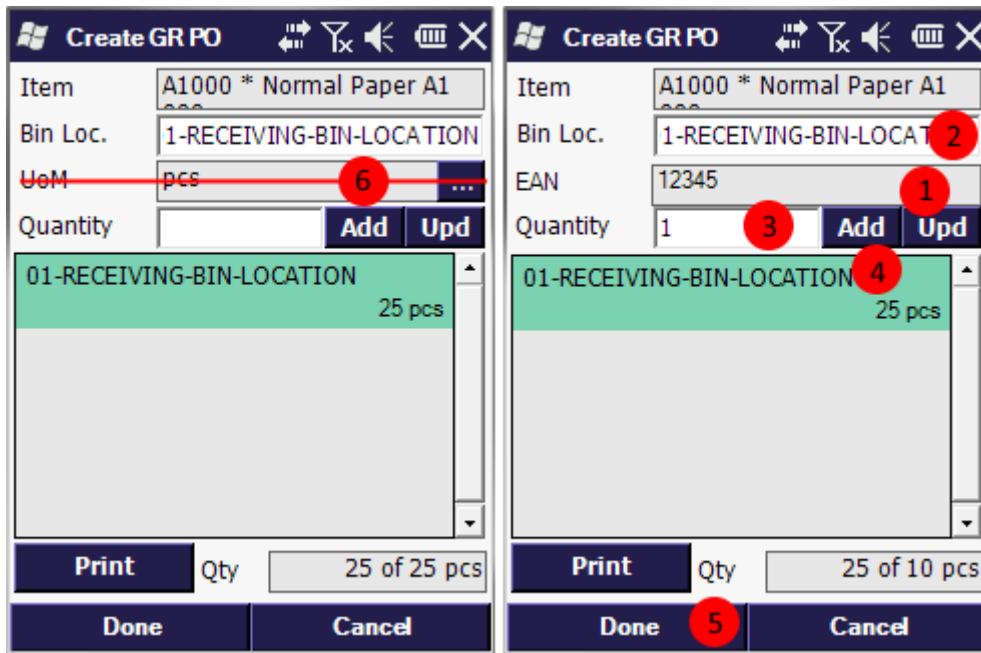
FieldName	Label	ReadOnly	Screen
EanCode	EAN	YES	CreateGoodsReceiptPOQuantitiesSerialScreen

3., 4.

User query: *BXMobileWH9_CreateGoodsReceiptPOQuantitiesSerialScreen_TextSerial_validate_after*

```
-- After the serial number has been scanned,
-- press OK button to go back to previous screen
IF $[TextSerial]<>' ' SELECT 'OK' AS Click$
```

1.5. Regular Items Screen



Changes:

1. New field: EAN (Item's bar code) added and loaded with data
2. Save the last bin for next time and load it with last value
3. Set quantity to 1 by default and focus on quantity
- 4., 5. When the Add button is pressed automatically press Done to go back to previous screen
6. UoM field is hidden because it's not used

The user queries and custom fields needed for these are:

1., 2., 3.

Create a new user table 'SCANEMPBL' with the following fields:

- To Bin Location (ToBL)
- Employee ID (empID)

User query: *BXMobileWH9_CreateGoodsReceiptPOQuantitiesNormalScreen_Load*

```
-- When screen is loaded fill bin location with last value
-- fill EAN with bar code from OITM, set quantit to 1 and
-- focus on Quantity field
SELECT
(SELECT CodeBars FROM OITM WHERE
ItemCode=SUBSTRING($[TextItem],1,PATINDEX('%*%', $[TextItem])-2) ) AS
'EanCode',
(SELECT [@SCANEMPBL].U_ToBL FROM [@SCANEMPBL] WHERE U_empID =
$[Employee.EmployeeID]) AS 'TextBinLocation',
'1' AS 'TextQuantity',
'TextQuantity' AS Click$
```

2.

User query:

BXMobileWH9_CreateGoodsReceiptPOQuantitiesNormalScreen_TextBinLocation_validate_after


```
-- Save bin location for next time
IF (SELECT ISNULL([@SCANEMPBL].U_ToBL, ''))
FROM [@SCANEMPBL] WHERE U_empID = $('[Employee.EmployeeID]') <>
$[TextBinLocation]
UPDATE [@SCANEMPBL] SET [U_ToBL]=$[TextBinLocation] WHERE U_empID =
$[Employee.EmployeeID]
```

4., 5.

User query: *BXMobileWH9_CreateGoodsReceiptPOQuantitiesNormalScreen_ButtonAdd_click_after*

```
-- When Add button is pressed, automatically press OK to close screen
SELECT 'OK' AS Click$
```

2., 6.

To show the new EAN field on the screen and hide UoM, add record to the [Customization Fields\(BXPCUSTFD\)](#) user table:

FieldName	Label	ReadOnly	Visible	Screen
EanCode	EAN	YES	YES	CreateGoodsReceiptPOQuantitiesNormalScreen
TextUoM			NO	CreateGoodsReceiptPOQuantitiesNormalScreen

2. Helper SQL procedures

2.1. Produmex Scan List splitting 1

```
CREATE FUNCTION [dbo].[SplitStringForDataRepeater] ( @string NVARCHAR
(MAX))
RETURNS @output TABLE (splitdata NVARCHAR (MAX))
BEGIN
    DECLARE @START INT, @END INT
    SELECT @START = 1, @END = CHARINDEX ('##', @string)
    WHILE @START < LEN (@string) + 1 BEGIN
        IF @END = 0
            SET @END = LEN (@string) + 2
        INSERT INTO @output (splitdata)
        VALUES (SUBSTRING(@string, @START, @END - @START))
        SET @START = @END + 2
        SET @END = CHARINDEX('##', @string, @START)
    END
    RETURN
END
```

2.2. Produmex Scan List splitting 2

```
CREATE FUNCTION [dbo].[SplitStringForDataRepeater2] ( @string NVARCHAR
(MAX), @string2 NVARCHAR (MAX))
RETURNS @output TABLE (splitdata NVARCHAR (MAX), splitdata2 NVARCHAR (MAX))
BEGIN
```

```
DECLARE @START INT, @END INT @start2 INT, @end2 INT
SELECT @START = 1, @END = CHARINDEX ('##', @string) , @start2 = 1, @end2
= CHARINDEX ('##', @string2)
WHILE @START < LEN (@string) + 1 BEGIN
    IF @END = 0
        BEGIN
            SET @END = LEN (@string) + 2
            SET @end2 = LEN (@string) + 2
            END
        INSERT INTO @output (splitdata, splitdata2)
        VALUES (SUBSTRING(@string, @START, @END - @START)
, SUBSTRING(@string2, @start2, @end2 - @start2))
        SET @START = @END + 2
        SET @END = CHARINDEX('##', @string, @START)
        SET @start2 = @end2 + 2
        SET @END = CHARINDEX('##', @string2, @start2)
    END
RETURN
END
```

Customizing serial number management in Produmex Scan

This document provides examples for serial number management customization in Produmex Scan. For more information about the general customization method please see: [Customization Technology in Produmex Scan](#)

1. User-Defined Fields

1.1. Goods Receipt

1.1.1. Goods Receipt PO Lines Screen

Add the following record to the [Customization Fields](#) user table:

FieldName	Visible	Screen
TextUoM	NO	GoodsReceiptPOLinesScreen

Item code field must be scanned before Add button click

Query name: BXMobileWH9_GoodsReceiptPOLinesScreen_ButtonAdd_click

```
IF $[TextItem] = ''
SELECT 'You must scan an item first!' AS 'Message$', 'E' AS 'MessageType$',
'TextItem' AS Click$
```

Item code field must be scanned before Update button click

Query name: BXMobileWH9_GoodsReceiptPOLinesScreen_ButtonUpdate_click

```
IF $[TextItem] = ''
SELECT 'Please scan an item!' AS 'Message$', 'E' AS 'MessageType$',
'TextItem' AS Click$
```

Focus on Item field (when returning to this screen)

Query name: BXMobileWH9_GoodsReceiptPOLinesScreen_Activate

```
SELECT 'TextItem' AS Click$
```

Change contents of the list, show bar code instead of WH text

Query name: BXMobileWH9_GoodsReceiptPOLinesScreen_DataRepeater_InternalDataLoad

```
SELECT
SUBSTRING(S.splitdata,1,50) AS [DataRepeater.UIItemCode],
C.CodeBars AS [DataRepeater.UIWarehouse]
FROM dbo.SplitStringForDataRepeater($[DataRepeater.UIItemCode]) S, OITM C
WHERE C.ItemCode=SUBSTRING(S.splitdata,1,PATINDEX('%*%',S.splitdata)-2)
```

After Item field has been entered write ' ' to quantity and press Add button

Query name: BXMobileWH9_GoodsReceiptPOLinesScreen_TextItem_validate_after

```
IF $[TextItem]<>' ' SELECT ' ' AS TextQuantity, 'ButtonAdd' AS Click$
```

1.1.2. Goods Receipt PO Quantities Serial ScreenAdd the following record to the [Customization Fields](#) user table:

FieldName	Label	ReadOnly	Screen
EanCode	EAN	YES	GoodsReceiptPOQuantitiesSerialScreen

Create a new user table 'SCANEMPBL' with the following fields:

- Employee ID (empID)
- To Bin Location (ToBL)

Load bin location for employee, fill EanCode with bar code

Query name: BXMobileWH9_GoodsReceiptPOQuantitiesSerialScreen_Load

```
SELECT
(SELECT [@SCANEMPBL].U_ToBL FROM [@SCANEMPBL] WHERE U_empID =
$[Employee.EmployeeID]) AS 'TextBinLocation',
(SELECT CodeBars FROM OITM WHERE
ItemCode=SUBSTRING($[TextItem],1,PATINDEX('%*%', $[TextItem])-2) ) AS
'EanCode'
```

Save the Bin Location value for next time

Query name: BXMobileWH9_GoodsReceiptPOQuantitiesSerialScreen_TextBinLocation_validate_after

```
IF (SELECT ISNULL(OHEM.U_ToBL, '' ) FROM OHEM
WHERE empID = ${Employee.EmployeeID} ) <> ${TextBinLocation}
UPDATE OHEM SET [U_ToBL]=${TextBinLocation} WHERE empID =
${Employee.EmployeeID}
```

After serial number was specified press OK to go back

Query name: BXMobileWH9_GoodsReceiptPOQuantitiesSerialScreen_TextSerial_validate_after

```
IF ${TextSerial}<>' ' SELECT 'OK' AS Click$
```

1.1.3. Goods Receipt PO Quantities Normal Screen

Add the following record to the [Customization Fields](#) user table:

FieldName	Label	ReadOnly	Screen
EanCode	EAN	YES	GoodsReceiptPOQuantitiesNormalScreen
FieldName	Visible	Screen	
TextUoM	NO	GoodsReceiptPOQuantitiesNormalScreen	

Create a new user table 'SCANEMPBL' with the following fields:

- Employee ID (empID)
- To Bin Location (ToBL)

Save the Bin Location value for next time

Query name: BXMobileWH9_GoodsReceiptPOQuantitiesNormalScreen_TextBinLocation_validate_after

```
IF (SELECT ISNULL ([@SCANEMPBL].U_ToBL, '' )
FROM [@SCANEMPBL] WHERE U_empID = ${Employee.EmployeeID} ) <>
${TextBinLocation}
UPDATE [@SCANEMPBL] SET [U_ToBL]=${TextBinLocation} WHERE U_empID =
${Employee.EmployeeID}
```

Load last location for employee, EAN bar code, set quantity to 1 and focus on quantity

Query name: BXMobileWH9_GoodsReceiptPOQuantitiesNormalScreen_Load

```
SELECT
(SELECT CodeBars FROM OITM
WHERE ItemCode=SUBSTRING(${TextItem},1,PATINDEX('%*%',${TextItem})-2) ) AS
'EanCode',
(SELECT [@SCANEMPBL].U_ToBL FROM [@SCANEMPBL] WHERE U_empID =
${Employee.EmployeeID}) AS 'TextBinLocation', '1' AS 'TextQuantity'
,'TextQuantity' AS Click$
```

After the Add button press OK to go back

Query name: BXMobilWH9_GoodsReceiptPOQuantitiesNormalScreen_ButtonAdd_click_after

```
SELECT 'OK' AS Click$
```

1.2. Free Goods Receipt

1.2.1. CreateGoodsReceiptPOLinesScreen

Add the following record to the [Customization Fields](#) user table:

FieldName	Visible	Screen
TextUoM	NO	GoodsReceiptReceiptLinesScreen

Create a new user table 'SCANEMPWH' with the following fields:

- Employee ID (empID)
- To Warehouse (ToWh)

Load saved warehouse for employee, focus on item

Query name: BXMobilWH9_CreateGoodsReceiptPOLinesScreen_Load

```
SELECT
(SELECT [@SCANEMPWH].U_ToWh FROM [@SCANEMPWH] WHERE U_empID =
$[Employee.EmployeeID]) AS 'TextWarehouse',
'TextItem' AS Click$
```

Focus on item (after returning to this screen) Query name:

BXMobilWH9_CreateGoodsReceiptPOLinesScreen_Activate

```
SELECT 'TextItem' AS Click$
```

Modify list contents

Query name: BXMobilWH9_CreateGoodsReceiptPOLinesScreen_DataRepeater_InternalDataLoad

```
-- Modify list contents:
-- [DataRepeater.UIItem] Item code + name
-- [DataRepeater.UIWarehouse] Bar code (EAN)
SELECT SUBSTRING(S.splitdata,7,50) AS [DataRepeater.UIItem], C.CodeBars AS
[DataRepeater.UIWarehouse]
FROM dbo.SplitStringForDataRepeater($[DataRepeater.UIItem]) S, OITM C
WHERE C.ItemCode=SUBSTRING(S.splitdata,7,PATINDEX('%*%',S.splitdata)-8)
```

Save warehouse for employee

Query name: BXMobilWH9_CreateGoodsReceiptPOLinesScreen_TextWarehouse_validate_after

```
IF (SELECT ISNULL([@SCANEMPWH].U_ToWh, '' )
FROM [@SCANEMPWH]
WHERE U_empID = $[Employee.EmployeeID]) <> $[TextWarehouse]
UPDATE [@SCANEMPWH]
```

```
SET [U_ToWh]=${TextWarehouse}  
WHERE U_empID = ${Employee.EmployeeID}
```

Check if item has been ordered/open quantity from this supplier

Query name: BXMobileWH9_CreateGoodsReceiptPOLinesScreen_TextItem_validate

```
DECLARE @itemcode nvarchar(MAX)  
SET @itemcode = ${TextItem}  
IF NOT EXISTS (SELECT T0.ItemCode FROM OITM T0 WHERE T0.ItemCode=@itemcode)  
SELECT @itemcode=T1.ItemCode FROM OBCD T1 WHERE T1.BcdCode=@itemcode  
IF @itemcode<>' ' AND (SELECT ISNULL(SUM(T1.[OpenQty]),0) FROM OPOR T0  
INNER JOIN POR1 T1 ON T0.[DocEntry] = T1.[DocEntry] WHERE T1.[ItemCode]  
=@itemcode AND T0.[CardCode] =  
LEFT(${TextSupplier},PATINDEX('%*%',${TextSupplier})-1))=0  
SELECT 'There is no Purchase Order: ' + @itemcode AS 'Message$', 'E' AS  
'MessageType$'  
ELSE SELECT '' AS dummy
```

Check if item has been ordered/open quantity from this supplier

Query name: BXMobileWH9_CreateGoodsReceiptPOLinesScreen_TextItem_validate

```
DECLARE @itemcode nvarchar(MAX)  
SET @itemcode = ${TextItem}  
IF NOT EXISTS (SELECT T0.ItemCode FROM OITM T0 WHERE T0.ItemCode=@itemcode)  
SELECT @itemcode=T1.ItemCode FROM OBCD T1 WHERE T1.BcdCode=@itemcode  
IF @itemcode<>' ' AND (SELECT ISNULL(SUM(T1.[OpenQty]),0) FROM OPOR T0  
INNER JOIN POR1 T1 ON T0.[DocEntry] = T1.[DocEntry] WHERE T1.[ItemCode]  
=@itemcode AND T0.[CardCode]  
=LEFT(${TextSupplier},PATINDEX('%*%',${TextSupplier})-1))=0  
SELECT 'There is no Purchase Order: ' + @itemcode AS 'Message$', 'E' AS  
'MessageType$'  
ELSE SELECT '' AS dummy
```

After item code has been entered write ' ' to quantity and press Add

Query name: BXMobileWH9_CreateGoodsReceiptPOLinesScreen_TextItem_validate_after

```
IF ${TextItem}<>' ' SELECT '' AS TextQuantity, 'ButtonAdd' AS Click$
```

1.2.2. CreateGoodsReceiptPOQuantitiesSerialScreen

Add the following record to the [Customization Fields](#) user table:

FieldName	Label	ReadOnly	Screen
EanCode	EAN	YES	CreateGoodsReceiptPOQuantitiesSerialScreen

Create a new user table 'SCANEMPBL' with the following fields: • Employee ID (empID) • To Warehouse (ToBL)

Load bin location from employee, fill EAN bar code

Query name: BXMobileWH9_CreateGoodsReceiptPOQuantitiesSerialScreen_Load

```
SELECT
(SELECT [@SCANEMPBL].U_ToBL FROM [@SCANEMPBL]
WHERE U_empID = $('[Employee.EmployeeID]') AS 'TextBinLocation',
(SELECT CodeBars FROM OITM
WHERE ItemCode=SUBSTRING($[TextItem],1,PATINDEX('%*%',[$[TextItem]])-2) ) AS
'EanCode'
```

Save bin location to employee

Query name:

BXMobileWH9_CreateGoodsReceiptPOQuantitiesSerialScreen_TextBinLocation_validate_after

```
IF (SELECT ISNULL([@SCANEMPBL].U_ToBL, '') FROM [@SCANEMPBL]
WHERE U_empID = $('[Employee.EmployeeID]') <> $('[TextBinLocation]')
UPDATE [@SCANEMPBL] SET [U_ToBL]=$[TextBinLocation]
WHERE U_empID = $('[Employee.EmployeeID]')
```

After serial entry press OK to go back

Query name: BXMobileWH9_CreateGoodsReceiptPOQuantitiesSerialScreen_TextSerial_validate_after

```
IF $('[TextSerial]') <> '' SELECT 'OK' AS Click$
```

1.2.3. CreateGoodsReceiptPOQuantitiesNormalScreenAdd the following record to the [Customization Fields](#) user table:

FieldName	Label	ReadOnly	Screen
EanCode	EAN	YES	GoodsReceiptPOQuantitiesNormalScreen
FieldName	Visible	Screen	
TextUoM	NO	GoodsReceiptPOQuantitiesNormalScreen	

Create a new user table 'SCANEMPBL' with the following fields:

- Employee ID (empID)
- To Warehouse (ToBL)

Load last location for employee, EAN bar code, set quantity to 1 and focus on quantity

Query name: BXMobileWH9_CreateGoodsReceiptPOQuantitiesNormalScreen_Load

```
SELECT
(SELECT CodeBars FROM OITM
WHERE ItemCode=SUBSTRING($[TextItem],1,PATINDEX('%*%',[$[TextItem]])-2) ) AS
'EanCode',
(SELECT [@SCANEMPBL].U_ToBL FROM [@SCANEMPBL]
WHERE U_empID = $('[Employee.EmployeeID]') AS 'TextBinLocation', '1' AS
'TextQuantity' , 'TextQuantity' AS Click$
```

Save bin location to employee

Query name:

BXMobileWH9_CreateGoodsReceiptPOQuantitiesNormalScreen_TextBinLocation_validate_after

```
IF (SELECT ISNULL([@SCANEMPBL].U_ToBL, '' ) FROM [@SCANEMPBL]
WHERE U_empID = $[Employee.EmployeeID]) <> $[TextBinLocation]
UPDATE [@SCANEMPBL] SET [U_ToBL]=$[TextBinLocation]
WHERE U_empID = $[Employee.EmployeeID]
```

After add button press OK to go back

Query name: BXMobileWH9_CreateGoodsReceiptPOQuantitiesNormalScreen_ButtonAdd_click_after

```
SELECT 'OK' AS Click$
```

1.3. Transfer Stocks

1.3.1. TransferStocksScreen

Add the following record to the [Customization Fields](#) user table:

FieldName	Visible	Screen
TextBatch	NO	CreateGoodsReceiptPOQuantitiesSerialScreen

Modify the list contents: show EAN bar code instead of item code

Query name: BXMobileWH9_TransferStocksScreen_DataRepeater_InternalDataLoad

```
SELECT
SUBSTRING(S.splitdata,1,15)+'EAN:' + ISNULL(C.CodeBars, '')
AS [DataRepeater.UIItemCode]
FROM dbo.SplitStringForDataRepeater($[DataRepeater.UIItemCode]) S, OITM C
WHERE C.ItemCode=SUBSTRING(S.splitdata,1,PATINDEX('%*%',S.splitdata)-2)
```

Focus on item field after returning to this screen

Query name: BXMobileWH9_TransferStocksScreen_Activate

```
SELECT 'TextItem' AS Click$
```

1.3.2. TransferStocksQuantitiesSerialScreen

Add the following record to the [Customization Fields](#) user table:

FieldName	Label	ReadOnly	Screen
EanCode	EAN	YES	TransferStocksQuantitiesSerialScreen

Create a new user table 'SCANEMPBL' with the following fields:

- Employee ID (empID)
- To Bin Location (ToBL)

Fill to location from saved, load bar code into EAN code

Query name: BXMobileWH9_TransferStocksQuantitiesSerialScreen_Load

```
SELECT
(SELECT [@SCANEMPBL].U_ToBL
FROM [@SCANEMPBL]
WHERE U_empID = $('[Employee.EmployeeID]') AS 'TextToLocation',
(SELECT CodeBars FROM OITM
WHERE ItemCode=SUBSTRING($[TextItem],1,PATINDEX('%*%',[$[TextItem]])-2) ) AS
'EanCode'
```

Save to location for employee

Query name: BXMobileWH9_TransferStocksQuantitiesSerialScreen_TextToLocation_validate_after

```
IF
(SELECT ISNULL([@SCANEMPBL].U_ToBL, ''))
FROM [@SCANEMPBL]
WHERE U_empID = $('[Employee.EmployeeID]') <> $('[TextToLocation]')
UPDATE [@SCANEMPBL]
SET [U_ToBL]= $('[TextToLocation]') WHERE U_empID = $('[Employee.EmployeeID]')
```

After serial number entered, press OK to go back

Query name: BXMobileWH9_TransferStocksQuantitiesSerialScreen_TextSerialNumber_validate_after

```
IF $('[TextSerialNumber]') <> '' SELECT 'OK' AS Click$
```

1.3.3. TransferStocksQuantitiesNormalScreen

Add the following record to the [Customization Fields](#) user table:

FieldName	Label	ReadOnly	Screen
EanCode	EAN	YES	TransferStocksQuantitiesNormalScreen
FieldName	Visible	Screen	
TextUoM	NO	TransferStocksQuantitiesNormalScreen	

Create a new user table 'SCANEMPBL' with the following fields:

- Employee ID (empID)
- To Warehouse (ToBL)

Load EAN bar code and to location, set quantity to 1 and focus on quantity

Query name: BXMobileWH9_TransferStocksQuantitiesNormalScreen_Load

```
SELECT
(SELECT CodeBars
FROM OITM
```

```
WHERE ItemCode=SUBSTRING($[TextItem],1,PATINDEX('%*%', $[TextItem])-2) ) AS  
'EanCode',  
(SELECT [@SCANEMPBL].U_ToBL  
FROM [@SCANEMPBL]  
WHERE U_empID = $[Employee.EmployeeID]) AS 'TextToLocation','1' AS  
'TextQuantity','TextQuantity' AS Click$
```

Save to location for employee

Query name: BXMobilWH9_TransferStocksQuantitiesNormalScreen_TextToLocation_validate_after

```
IF (SELECT ISNULL([@SCANEMPBL].U_ToBL, '' )  
FROM [@SCANEMPBL]  
WHERE U_empID = $[Employee.EmployeeID]) <> $[TextToLocation]  
UPDATE [@SCANEMPBL]  
SET [U_ToBL]=$[TextToLocation]  
WHERE U_empID = $[Employee.EmployeeID]
```

Press OK to go back after Add button

Query name: BXMobilWH9_TransferStocksQuantitiesNormalScreen_ButtonAdd_click_after

```
SELECT 'OK' AS Click$
```

1.4. Mass Transfer

1.4.1. TransferStocksMassScreen

Create a new user table 'SCANEMPBL' with the following fields:

- Employee ID (empID)
- To Bin Location (ToBL)
- From Bin Location (FromBL)

Load saved bin location from and to

Query name: BXMobilWH9_TransferStocksMassScreen_Load

```
SELECT  
(SELECT [@SCANEMPBL].U_FromBL FROM [@SCANEMPBL]  
WHERE U_empID = $[Employee.EmployeeID]) AS 'TextWHBinLocationFrom',  
(SELECT [@SCANEMPBL].U_ToBL  
FROM [@SCANEMPBL]  
WHERE U_empID = $[Employee.EmployeeID]) AS 'TextWHBinLocationTo'
```

Save from bin location

Query name: BXMobilWH9_TransferStocksMassScreen_TextWHBinLocationFrom_validate_after

```
IF $[TextWHBinLocationFrom] <> ''  
AND (SELECT ISNULL([@SCANEMPBL].U_FromBL, '' )
```

```

FROM [@SCANEMPBL]
WHERE U_empID = $('[Employee.EmployeeID]) <> $('[TextWHBinLocationFrom]
UPDATE [@SCANEMPBL]
SET [U_FromBL]=$[TextWHBinLocationFrom]
WHERE U_empID = $('[Employee.EmployeeID]

```

Save to bin location

Query name: BXMobileWH9_TransferStocksMassScreen_TextWHBinLocationFrom_validate_after

```

IF $('[TextWHBinLocationTo] <>'
AND (SELECT ISNULL([@SCANEMPBL].U_ToBL, ''))
FROM [@SCANEMPBL]
WHERE U_empID = $('[Employee.EmployeeID]) <> $('[TextWHBinLocationTo]
UPDATE [@SCANEMPBL]
SET [U_ToBL]=$[TextWHBinLocationTo]
WHERE U_empID = $('[Employee.EmployeeID]

```

Modify list contents

• [DataRepeater.UItemCode] Item code + name • [DataRepeater.UIOnHandQuantity] Bar code (EAN) + quantity
Query name: BXMobileWH9_TransferStocksMassScreen_DataRepeater_InternalDataLoad

```

-- Modify list contents
-- [DataRepeater.UItemCode] Item code + name
-- [DataRepeater.UIOnHandQuantity] Bar code (EAN) + quantity
SELECT C.CodeBars + ' ' +SUBSTRING(S.splitdata2,1,50) AS
[DataRepeater.UIOnHandQuantity]
FROM dbo.SplitStringForDataRepeater2($[DataRepeater.UItemCode], $
[DataRepeater.UIOnHandQuantity]) S, OITM C
WHERE C.ItemCode=SUBSTRING(S.splitdata,1,PATINDEX('%*%',S.splitdata)-1)

```

1.5. Transfer Stock Request

1.5.1. TransferStockRequestLineScreen

Add the following record to the [Customization Fields](#) user table:

FieldName	Visible	Screen
TextBatch	NO	TransferStockRequestLineScreen

Modify list contents, add EAN bar code

Query name: BXMobileWH9_TransferStockRequestLineScreen_DataRepeater_InternalDataLoad

```

SELECT SUBSTRING(S.splitdata,7,15)+' EAN:' + ISNULL(C.CodeBars, '') AS
[DataRepeater.UItem]
FROM dbo.SplitStringForDataRepeater($[DataRepeater.UItem]) S, OITM C
WHERE C.ItemCode=SUBSTRING(S.splitdata,7,PATINDEX('%*%',S.splitdata)-8)

```

After Item Code has been entered, set quantity to ' ' and press Add

Query name: BXMobileWH9_TransferStockRequestLineScreen_TextItem_validate_after

```
IF $[TextItem]<>' ' SELECT ' ' AS TextQuantity, 'ButtonAdd' AS Click$
```

Item code scanning is mandatory (before pressing Add button)

Query name: BXMobileWH9_TransferStockRequestLineScreen_ButtonAdd_click

```
IF $[TextItem] = ''  
SELECT 'You must scan an item!' AS 'Message$', 'E' AS 'MessageType$',  
'TextItem'  
AS Click$
```

Item code scanning is mandatory (before pressing Update button)

Query name: BXMobileWH9_TransferStockRequestLineScreen_ButtonUpdate_click

```
IF $[TextItem] = ''  
SELECT 'You must scan an item!' AS 'Message$', 'E' AS 'MessageType$',  
'TextItem'  
AS Click$
```

Focus on Item field (when returning to this screen)

Query name: BXMobileWH9_TransferStockRequestLineScreen_Activate

```
SELECT 'TextItem' AS Click$
```

1.5.2. TransferStockRequestsQuantitiesSerialScreen

Add the following record to the [Customization Fields](#) user table:

FieldName	Label	ReadOnly	Screen
EanCode	EAN	YES	TransferStockRequestsQuantitiesSerialScreen

Create a new user table 'SCANEMPBL' with the following fields:

- Employee ID (empID)
- To Bin Location (ToBL)

Set to location from saved, set EAN code from barcode

Query name: BXMobileWH9_TransferStockRequestsQuantitiesSerialScreen_Load

```
SELECT  
(SELECT [@SCANEMPBL].U_ToBL FROM [@SCANEMPBL]  
WHERE U_empID = $[Employee.EmployeeID]) AS 'TextToLocation',  
(SELECT CodeBars FROM OITM  
WHERE ItemCode=SUBSTRING($[TextItem],1,PATINDEX('%*%', $[TextItem])-2) ) AS  
'EanCode'
```

Save to location if changed

Query name:

BXMobileWH9_TransferStockRequestsQuantitiesSerialScreen_TextToLocation_validate_after

```
IF (SELECT ISNULL ([@SCANEMPBL].U_ToBL, '' )
FROM [@SCANEMPBL]
WHERE U_empID = $[Employee.EmployeeID])<> $[TextToLocation]
UPDATE [@SCANEMPBL]
SET [U_ToBL]=$[TextToLocation] WHERE U_empID = $[Employee.EmployeeID]
```

After serial number has been entered press OK to go back

Query name:

BXMobileWH9_TransferStockRequestsQuantitiesSerialScreen_TextSerialNumber_validate_after

```
IF $[TextSerialNumber]<>' ' SELECT 'OK' AS Click$
```

1.5.3. TransferStockRequestsQuantitiesNormalScreen

Add Customization Fields user table records:

FieldName	Label	ReadOnly	Screen
EanCode	EAN	YES	TransferStockRequestsQuantitiesNormalScreen
FieldName	Visible	Screen	
TextUoM	NO	TransferStockRequestsQuantitiesNormalScreen	

Create a new user table 'SCANEMPBL' with the following fields:

- Employee ID (empID)
- To Bin Location (ToBL)
- From Bin Location (FromBL)

Fill EanCode, To location, set 1 to quantity and focus on quantity

Query name: BXMobileWH9_TransferStockRequestsQuantitiesNormalScreen_Load

```
SELECT
(SELECT CodeBars FROM OITM
WHERE ItemCode=SUBSTRING($[TextItem],1,PATINDEX('%*%', $[TextItem])-2) ) AS
'EanCode',
(SELECT [@SCANEMPBL].U_ToBL
FROM [@SCANEMPBL]
WHERE U_empID = $[Employee.EmployeeID]) AS 'TextToLocation', '1' AS
'TextQuantity', 'TextQuantity' AS Click$
```

Save to bin location for next time

Query name:

BXMobileWH9_TransferStockRequestsQuantitiesNormalScreen_TextToLocation_validate_after

```
IF (SELECT ISNULL [@SCANEMPBL] (.U_ToBL, '' )
FROM [@SCANEMPBL]
```

```
WHERE U_empID = $('[Employee.EmployeeID]) <> $('[TextToLocation]
UPDATE [@SCANEMPBL]
SET [U_ToBL]=$[TextToLocation]
WHERE U_empID = $('[Employee.EmployeeID]
```

After Add press OK to go back

Query name: BXMobileWH9_TransferStockRequestsQuantitiesNormalScreen_ButtonAdd_click_after

```
SELECT 'OK' AS Click$
```

1.6. Picking Screen

1.6.1. Picking Screen

Add the following record to the [Customization Fields](#) user table:

FieldName	Label	ReadOnly	Screen
BO_U_Tour ID	TourID	YES	PickingLinesScreen

Show TourID in the list in the place of date field

Query name: BXMobileWH9_PickingScreen_DataRepeater_InternalDataLoad

```
SELECT SUBSTRING(S.splitdata2,1,50)+ ' Tour: ' + C.U_TourID AS
[DataRepeater.UIPickDate]
FROM dbo.SplitStringForDataRepeater2($[DataRepeater.UIPickListNo],
$[DataRepeater.UIPickDate]) S, OPKL C
WHERE C.AbsEntry= CAST(SUBSTRING(S.splitdata, 11,5) AS INT)
```

1.6.2. Picking Lines Screen

Add the following record to the [Customization Fields](#) user table. The Tour ID field will be shown on the screen and the Bin Code field will be editable.

FieldName	Label	ReadOnly	Screen
BO_U_TourID	TourID	YES	PickingLinesScreen
TextBinCode	Item	NO	PickingLinesScreen

Fill TourID field on top of the screen

Query name: BXMobileWH9_PickingLinesScreen_Load

```
SELECT
(SELECT OPKL.U_TourID FROM OPKL WHERE OPKL.AbsEntry =
CAST(LEFT($[TextPickList],PATINDEX('%*%', $[TextPickList])-1) AS INT)) AS
[BO_U_TourID]
```

Mandatory to scan/enter item in bin code field

Query name: BXMobilWH9_PickingLinesScreen_OK_clicked

```
IF $('[TextBinCode]' = ''
SELECT 'Scan an item!' AS 'Message$', 'E' AS 'MessageType$', 'TextBinCode'
AS Click$
```

Show EAN bar code in list

Query name: BXMobilWH9_PickingLinesScreen_DataRepeater_InternalDataLoad

```
SELECT ' EAN: ' + C.CodeBars AS [DataRepeater.UIBinCode]
FROM dbo.SplitStringForDataRepeater2($[DataRepeater.UItem],
$[DataRepeater.UIBaseType]) S, OITM C
WHERE C.ItemCode=SUBSTRING(S.splitdata,1,PATINDEX('%*%',S.splitdata)-1)
```

Focus on bin code field

Query name: BXMobilWH9_PickingLinesScreen_Activate

```
SELECT 'TextBinCode' AS Click$
```

1.6.3. PickingLinesPickSerialScreen

Add new EanCode field to screen, set bin field to read only. Add the following records to the [Customization Fields](#) user table:

FieldName	Label	ReadOnly	Screen
EanCode	EAN	YES	PickingLinesPickSerialScreenw
FieldName	Label	Screen	
TextBinLocation	YES	PickingLinesPickSerialScreen	

Show the bin location and the EAN code of the item on the screen

Query name: BXMobilWH9_PickingLinesPickSerialScreen_Load

```
SELECT $('[TextRecBin]' AS 'TextBinLocation',
(SELECT CodeBars FROM OITM
WHERE ItemCode=SUBSTRING($[TextItem],1,PATINDEX('%*%',[$[TextItem]])-2) ) AS
'EanCode'
```

Press the Post button after the serial number is scanned if the open quantity is zero

Query name: BXMobilWH9_PickingLinesPickSerialScreen_TextSerialNumber_validate_after

```
IF $('[TextSerialNumber]' <> ''
IF CAST(LEFT($[TextOpenQty],PATINDEX('% %',$[TextOpenQty]+' ')-1) AS INT)=0
SELECT 'OK' AS 'Click$'
ELSE SELECT 'OK##Option' AS 'Click$'
```

1.6.4. PickingLinesPickNormalScreen

Hide UoM field from screen. Add the following record to the [Customization Fields](#) user table:

FieldName	Label	ReadOnly	Screen
EanCode	EAN	YES	PickingLinesPickNormalScreen
FieldName	Visible	Screen	
TextUoM	NO	PickingLinesPickNormalScreen	
FieldName	ReadOnly	Screen	
TextBinLocation	YES	PickingLinesPickNormalScreen	

Show the bin location and the EAN code of the item on the screen

Query name: BXMobileWH9_PickingLinesPickNormalScreen_Load

```
SELECT ${TextRecBin} AS 'TextBinLocation',  
(SELECT CodeBars FROM OITM  
WHERE ItemCode=${SelectedPickListLine.ItemCode}) AS 'EanCode', 1 AS  
'TextQuantity', 'TextQuantity' AS Click$
```

After quantity has been entered, press OK to book and then back button

Query name: BXMobileWH9_PickingLinesPickNormalScreen_TextQuantity_validate_after

```
IF CAST(LEFT(${TextOpenQty}, PATINDEX('% %', ${TextOpenQty} + ' ')-1) AS  
INT)-CAST(${TextQuantity} AS INT)<=0  
SELECT 'OK' AS 'Click$'  
ELSE SELECT 'OK##Option' AS 'Click$'
```

1.7. Goods Receipt

1.7.1. GoodsReceiptLinesScreen

Hide UoM field from screen. Add the following record to the [Customization Fields](#) user table:

FieldName	Visible	Screen
TextUoM	NO	PickingLinesScreen

Sets price, currency and account no fields

Query name: bx_mobile_wh9_goodsreceipt_pricing

```
SELECT  
ISNULL(T1.Price, 0) AS 'BXITPRC',  
ISNULL(T1.Currency, 'FT') AS 'BXITCURR',  
'5911' AS 'BXITACCN'  
FROM OITM T0  
JOIN ITM1 T1 ON T0.ItemCode=T1.ItemCode AND T1.Pricelist='1'
```



```
WHERE T0.[ItemCode] =[%3]
```

Create a new user table 'SCANEMPWH' with the following fields:

- Employee ID (empID)
- To Warehouse (ToWh)

Load warehouse from employee's saved value, focus on item

Query Name: BXMobileWH9_GoodsReceiptLinesScreen_Load

```
SELECT
(SELECT [@SCANEMPWH].U_ToWh FROM [@SCANEMPWH]
WHERE U_empID =[$[Employee.EmployeeID]]) AS 'TextWarehouse', 'TextItem' AS
Click$
```

Save warehouse code for next time

Query Name: Save warehouse code for next time

```
IF (SELECT ISNULL ([@SCANEMPWH].U_ToWh, '') FROM [@SCANEMPWH]
WHERE U_empID = [$[Employee.EmployeeID]]) <> [$[TextWarehouse]
UPDATE [@SCANEMPWH] SET [U_ToWh]=[$[TextWarehouse] WHERE U_empID =
[$[Employee.EmployeeID]
```

After item code has been entered, automatically set quantity to ' ' and press add

Query Name: BXMobileWH9_GoodsReceiptLinesScreen_TextItem_validate_after

```
IF [$[TextItem]<>' ' SELECT ' ' AS TextQuantity, 'ButtonAdd' AS Click$
```

Change the contents of the list: [DataRepeater.UIItem] Item code + name, [DataRepeater.UIWarehouse] Bar code (EAN)

Query Name: BXMobileWH9_GoodsReceiptLinesScreen_DataRepeater_InternalDataLoad

```
SELECT
SUBSTRING(S.splitdata,7,50) AS [DataRepeater.UIItem],
C.CodeBars AS [DataRepeater.UIWarehouse]
FROM dbo.SplitStringForDataRepeater([$[DataRepeater.UIItem]) S, OITM C
WHERE C.ItemCode=SUBSTRING(S.splitdata,7,PATINDEX('%*%',S.splitdata)-8)
```

Focus on item code (on return to this screen)

Query Name: BXMobileWH9_GoodsReceiptLinesScreen_Activate

```
SELECT 'TextItem' AS Click$
```

1.8. Query Stocks

1.8.1. QueryStocksScreen

Hide batch field from screen. Add the following record to the [Customization Fields](#) user table:

FieldName	Visible	Screen
TextBatch	NO	QueryStocksScreen

Create a new user table 'SCANEMPWH' with the following fields:

- Employee ID (empID)
- To Warehouse (ToWh)

Load default warehouse for employee, focus on Item field

Query Name: BXMobileWH9_QueryStocksScreen_Load

```
SELECT  
(SELECT [@SCANEMPWH].U_ToWh FROM [@SCANEMPWH] WHERE U_empID =  
$[Employee.EmployeeID]) AS 'TextWHBinLocation', 'TextItem' AS Click$
```

Modify list contents (show bar code)

Query Name: BXMobileWH9_QueryStocksScreen_DataRepeater_InternalDataLoad

```
SELECT SUBSTRING(S.splitdata,1,50) +' VK: '+ C.CodeBars AS  
[DataRepeater.UIItemCode]  
FROM dbo.SplitStringForDataRepeater($[DataRepeater.UIItemCode]) S, OITM C  
WHERE C.ItemCode=SUBSTRING(S.splitdata,1,PATINDEX('%*%',S.splitdata)-1)
```

2. Appendix

2.1. Helper SQL procedures

```
-- This function is a helper for Produmex Scan list splitting  
CREATE FUNCTION [dbo].[SplitStringForDataRepeater]  
( @string NVARCHAR(MAX) )  
RETURNS @output TABLE(splitdata NVARCHAR(MAX) )  
BEGIN  
DECLARE @START INT, @END INT  
SELECT @START = 1, @END = CHARINDEX('##', @string)  
WHILE @START < LEN(@string) + 1 BEGIN  
IF @END = 0  
SET @END = LEN(@string) + 2  
INSERT INTO @output (splitdata)  
VALUES(SUBSTRING(@string, @START, @END - @START))  
SET @START = @END + 2  
SET @END = CHARINDEX('##', @string, @START)  
END  
RETURN  
END
```

```
-- This function is a helper for Produmex Scan list splitting  
CREATE FUNCTION [dbo].[SplitStringForDataRepeater2]
```

```
( @string NVARCHAR(MAX), @string2 NVARCHAR(MAX) )
RETURNS @output TABLE(splitdata NVARCHAR(MAX) , splitdata2 NVARCHAR(MAX))
BEGIN
DECLARE @START INT, @END INT , @start2 INT, @end2 INT
SELECT @START = 1, @END = CHARINDEX('##', @string) , @start2 = 1, @end2 =
CHARINDEX('##', @string2)
WHILE @START < LEN(@string) + 1 BEGIN
IF @END = 0
BEGIN
SET @END = LEN(@string) + 2
SET @end2 = LEN(@string2) + 2
END
INSERT INTO @output (splitdata, splitdata2)
VALUES(SUBSTRING(@string, @START, @END - @START),SUBSTRING(@string2,
@start2, @end2 - @start2))
SET @START = @END + 2
SET @END = CHARINDEX('##', @string, @START)
SET @start2 = @end2 + 2
SET @end2 = CHARINDEX('##', @string2, @start2)
END
RETURN
END
```

8. Strategies in Produmex Scan

Produmex Scan supports automatic strategies, which are recommendations for select warehouse workers to do stock movements. In practice this can mean that when new goods arrive, the truck is unloaded into a loading area, bin location, and after that, the automatic recommendations instruct the warehouse workers where to move the unloaded stocks.

Replenishment or refilling recommendations can be used to make sure that the frequently used, easily reachable bin locations always have adequate and enough stock, and if not, then stock movements are recommended.

Produmex Scan (server) creates the recommendations as Stock Transfer Draft documents, which can be processed on the mobile device and the result is a created *Stock Transfer* document.

8.1. Incoming Strategy

The incoming strategy is a user query that is run periodically by the Produmex Scan server component. The output of the query will create *Stock Transfer - Draft* documents if moving stock is needed.

8.1.1. Configuration

Settings

Configure the following setting on the [Produmex Scan Strategies](#) tab.

Incoming strategies UQ name (default: bxmblewh9_strategy_incoming)

Incoming strategies frequency (default: 300 seconds = 5 minutes)

Query input, output

By default, the user query must be named 'bxmblewh9_strategy_incoming', but this can be changed in the configuration.

Input: the user query takes no input

Output: the user query must return a table with the recommended movement results.

The result table columns are:

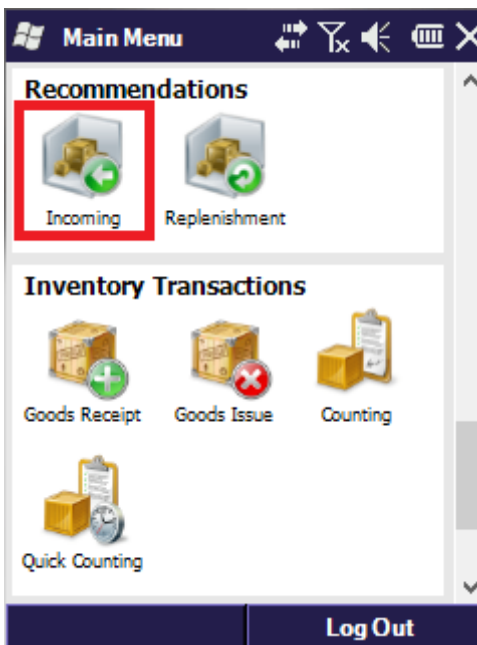
- ItemCode
- BatchNumber (only applicable for batch items, otherwise leave empty)
- SerialNumber (only applicable for serial items, otherwise leave empty)
- Quantity (in inventory UoM)
- SourceBin (where to move from)
- DestinationBin (where to move to)
- GroupID
- Remarks

The GroupID result column can be used to group created output documents: for each different groupID, a different *Stock Transfer - Draft* document will be created.

8.1.2. Logging, monitoring

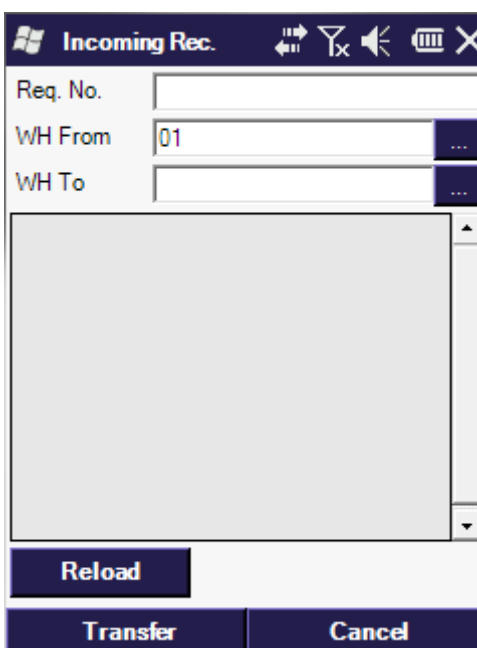
Mobile interface

Incoming strategy recommendation results transfers can be accessed from the Produmex Scan main menu, with the 'Incoming Recommendations' icon.

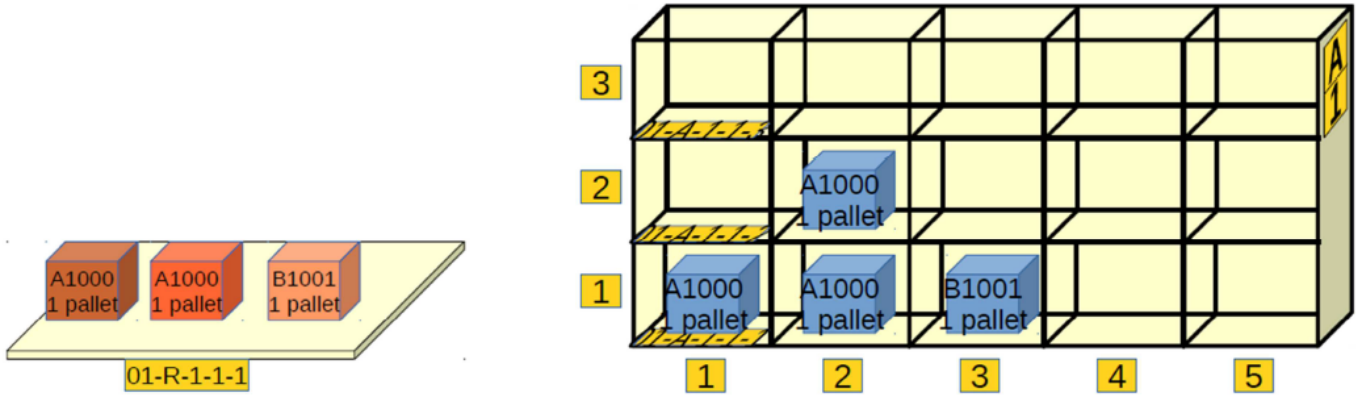


On the incoming recommendations screen, you will see all the *Stock Transfer - Draft* documents, where the Transaction Type user-defined field is 'Incoming'. It is possible to filter by 'From Warehouse' or 'To Warehouse'.

After selecting the appropriate document, press the Transfer button to start working on it.

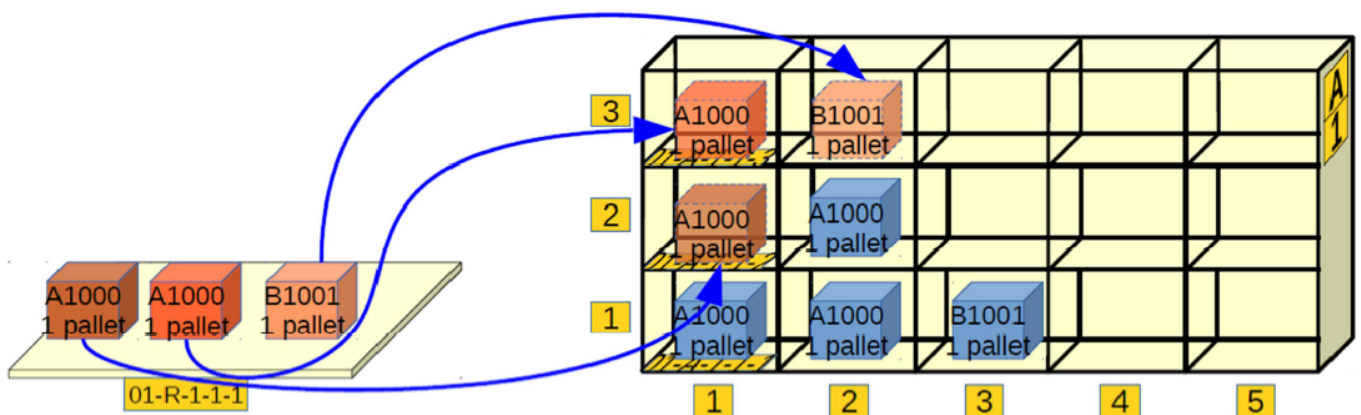
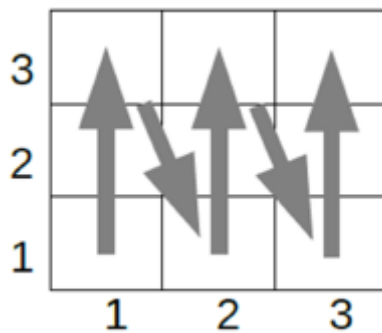


Example incoming strategy



In this example, we have an incoming location (01-R-1-1-1) where incoming trucks unload the goods. Our incoming strategy will check if there is any stock on this location, and automatically recommend moving it to empty locations in the warehouse shelves (locations 01-A-1-*.*). The algorithm which is implemented in an SQL user query:

1. Check if incoming locations (01-R-1-1-1) have stock
2. Look at the stock, see if it has a recommendation already
3. If not, then find a locations to move to - the next empty location in 01-A-1-*.*. Order of looking for empty locations is by shelf column then level (see figure below).
4. Return results to create recommendations for moving the incoming the item



In this example scenario on the picture above, the algorithm will return the following recommendations:

Item	Batch	From bin	To bin	Quantity
A1000		01-R-1-1-1	01-A-1-1-2	1 (pallet)*
A1000		01-R-1-1-1	01-A-1-1-3	1 (pallet)*
B1001	B12345	01-R-1-1-1	01-A-1-2-3	

*Quantity is always in inventory units, pallet units are only for illustration purposes here.

8.2. Replenishment Strategy

8.2.1. Configuration

Settings

Configure the following setting on the [Produmex Scan Strategies](#) tab.

Replenishment strategies UQ name (default: bxmobilewh9_strategy_replenishment)

Replenishment strategies frequency (default: 300 seconds = 5 minutes)

Query input, output

By default, the user query must be named 'bxmobilewh9_strategy_replenishment', but this can be changed in the configuration.

Input: the user query takes no input

Output: the user query must return a table with the recommended movement results.

The result table columns are:

- ItemCode
- BatchNumber (only applicable for batch items, otherwise leave empty)
- SerialNumber (only applicable for serial items, otherwise leave empty)
- Quantity (in inventory UoM)
- SourceBin (where to move from)
- DestinationBin (where to move to)
- GroupID
- Remarks

The GroupID result column can be used to group created output documents: for each different groupID, a different Stock Transfer Draft document will be created.

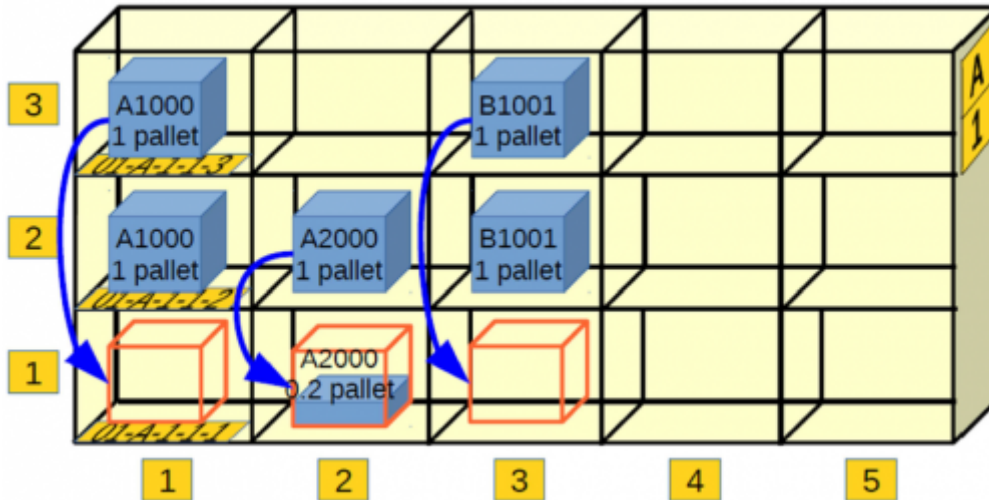
8.2.2. Logging, monitoring

Mobile interface

See the section 'Incoming Strategy - Mobile interface'. The work flow is the same, but you have to

select the 'Replenishment recommendations' icon on the main screen.

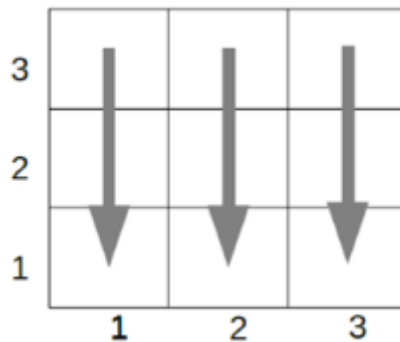
Example replenishment strategy

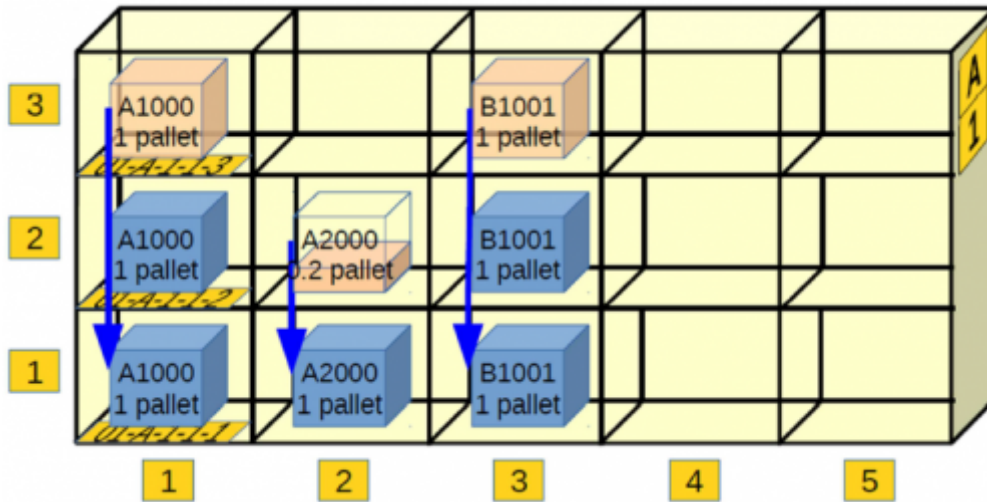


Replenishment strategy can be used to refill easily-reached locations in a warehouse system. In this example warehouse, the locations on the first level (01-A-1-*-1) are reachable by every warehouse worker, but higher levels (01-A-1-*-2, 3) are only reachable by fork lifts.

The refill algorithm, which is implemented in SQL query:

1. Check first level locations (01-A-1-*-1), see if it's empty or it's below minimum level (25% of pallet).
2. Look for refill sources in the same column, but higher levels. If found, recommend moving items from upper levels to lower levels





In this example scenario on the picture above, the algorithm will return the following recommendations:

Item	Batch	From bin	To bin	Quantity
A1000		01-A-1-1-3	01-A-1-1-2	1 (pallet)*
A2000		01-A-1-2-3	01-A-1-1-3	0.8 (pallet)*
B1001	B12345	01-A-1-3-3	01-A-1-2-3	1 (pallet)*

*Quantity is always in inventory units, pallet units are only for illustration purposes here.

8.3. Appendix

8.3.1. Example Incoming Strategy

Algorithm:

1. Look for stock on RecBinLocation (eg. 01-Q), only non-serial, non-batch items
2. Subtract/ignore stock quantity already recommended for moving
3. Recommend moving remaining quantity to locations defined by OutLocationFilter eg. 01-F-%, look for empty locations. Only put one PurchaseUoM (eg. pallet) quantity on one out location, split moving to multiple out locations if needed.

8.3.1.1. Example Incoming Strategy SQL

```

DECLARE @RecBinLocation nvarchar(MAX)
DECLARE @OutLocationFilter nvarchar(MAX)
DECLARE @ItemCode nvarchar(MAX)
DECLARE @Quantity DECIMAL
DECLARE @SourceBin nvarchar(MAX)
DECLARE @DestinationBin nvarchar(MAX)
DECLARE @PurchaseUomQuantity nvarchar(MAX)
DECLARE @QuantityPartial DECIMAL
DECLARE @ExcludeBinList nvarchar(MAX)
DECLARE @QuantityAlready nvarchar(MAX)
    
```

```
SET @RecBinLocation = '01-Q'
SET @OutLocationFilter = '01-F-%'
SET @ExcludeBinList = ''
DECLARE @RESULT TABLE (
  ItemCode nvarchar(MAX),
  BatchNumber nvarchar(MAX),
  SerialNumber nvarchar(MAX),
  Quantity DECIMAL,
  SourceLocation nvarchar(MAX),
  DestinationLocation nvarchar(MAX),
  GroupID nvarchar(MAX),
  Remarks nvarchar(MAX)
)
DECLARE curs CURSOR FOR
SELECT OIBQ.ItemCode, OIBQ.OnHandQty, OBIN.BinCode
FROM OBIN, OIBQ, OITM
WHERE OBIN.BinCode = @RecBinLocation
AND OIBQ.BinAbs = OBIN.AbsEntry
AND OITM.ItemCode = OIBQ.ItemCode
AND OIBQ.OnHandQty > 0
AND OITM.ManBtchNum = 'N'
AND OITM.ManSerNum = 'N'
OPEN curs
FETCH NEXT FROM curs INTO @ItemCode, @Quantity, @SourceBin
WHILE @@FETCH_STATUS = 0
BEGIN
  SET @PurchaseUomQuantity = NULL
  SELECT @PurchaseUomQuantity = BaseQty
  FROM UGP1, OITM
  WHERE UGP1.UgpEntry = OITM.UgpEntry AND UGP1.UomEntry = OITM.PUomEntry AND
  OITM.ItemCode = @ItemCode
  SET @QuantityAlready = NULL
  SELECT @QuantityAlready = SUM(FromQuantity)
  FROM XXX_INVTRANSFER_DRAFT_LINESBIN
  WHERE ItemCode = @ItemCode AND FromBin = @SourceBin
  IF @QuantityAlready IS NOT NULL BEGIN SET @Quantity = @Quantity -
  @QuantityAlready END

  WHILE @Quantity > 0 BEGIN
    SET @QuantityPartial = @Quantity
    IF @PurchaseUomQuantity IS NOT NULL AND @QuantityPartial >
    @PurchaseUomQuantity BEGIN SET @QuantityPartial = @PurchaseUomQuantity END
    SET @DestinationBin = NULL
    SELECT TOP 1 @DestinationBin = BinCode
    FROM OBIN LEFT OUTER JOIN OIBQ ON (OBIN.AbsEntry = OIBQ.AbsEntry)
    WHERE OBIN.BinCode LIKE @OutLocationFilter
    AND charindex(OBIN.BinCode, @ExcludeBinList) <= 0
    AND OBIN.BinCode NOT IN (SELECT ToBin FROM XXX_INVTRANSFER_DRAFT_LINESBIN
    WHERE ToBin LIKE @OutLocationFilter)
```

```

GROUP BY BinCode HAVING SUM(OnHandQty) = 0 OR SUM(OnHandQty) IS NULL
ORDER BY BinCode

-- if no more places, DestinationBin will be empty
INSERT INTO @RESULT (ItemCode, Quantity, SourceBin, DestinationBin)
VALUES (@ItemCode, @QuantityPartial, @SourceBin, @DestinationBin)
SET @Quantity = @Quantity - @QuantityPartial
SET @ExcludeBinList = @ExcludeBinList + ' ' + @DestinationBin
END
FETCH NEXT FROM curs INTO @ItemCode, @Quantity, @SourceBin
END
CLOSE curs
DEALLOCATE curs
SELECT * FROM @RESULT

```

8.3.1.2. Example Incoming Strategy HANA

```

DROP PROCEDURE BXINCOMINGSTRATEGY;

CREATE PROCEDURE BXINCOMINGSTRATEGY (
)
LANGUAGE SQLSCRIPT
AS
BEGIN
    DECLARE RecBinLocation NVARCHAR(200);
    DECLARE OutLocationFilter NVARCHAR(200);
    DECLARE ItemCode NVARCHAR(200);
    DECLARE Quantity DECIMAL(21,6);
    DECLARE SourceBin NVARCHAR(200);
    DECLARE DestinationBin NVARCHAR(200);
    DECLARE PurchaseUomQuantity NVARCHAR(200);
    DECLARE QuantityPartial DECIMAL(21,6);
    DECLARE ExcludeBinList NVARCHAR(2000);
    DECLARE BatchNum NVARCHAR(200);
    DECLARE QuantityAlready NVARCHAR(200);
    DECLARE TableExists INT;

    DECLARE CURSOR curs FOR
        SELECT "OIBQ"."ItemCode", "OIBQ"."OnHandQty", "OBIN"."BinCode" FROM
"OBIN", "OIBQ", "OITM"
        WHERE "OBIN"."BinCode" = RecBinLocation AND "OIBQ"."BinAbs" =
"OBIN"."AbsEntry" AND
            "OITM"."ItemCode" = "OIBQ"."ItemCode" AND "OIBQ"."OnHandQty" > 0
            AND "OITM"."ManBtchNum" = 'N' AND "OITM"."ManSerNum" = 'N';
    /*
    SELECT COUNT(*) INTO TableExists FROM "PUBLIC"."M_TEMPORARY_TABLES"
WHERE "TABLE_NAME" = '#RESULT';
    IF TableExists > 0 THEN
        DROP TABLE #result;

```

```
END IF;
*/
CREATE LOCAL TEMPORARY TABLE #result
(
    "ItemCode" NVARCHAR(200),
    "BatchNumber" NVARCHAR(200),
    "SerialNumber" NVARCHAR(200),
    "Quantity" DECIMAL(21,6),
    "SourceLocation" NVARCHAR(200),
    "DestinationLocation" NVARCHAR(200),
    "GroupID" NVARCHAR(200),
    "Remarks" NVARCHAR(200)
);

RecBinLocation := '01-S';
OutLocationFilter := '01-F%';
ExcludeBinList := '01-SYSTEM-BIN-LOCATION';

FOR c_ as curs DO
    ItemCode := c_."ItemCode";
    Quantity := c_."OnHandQty";
    SourceBin := c_."BinCode";

    PurchaseUomQuantity := NULL;
    SELECT SUM("BaseQty") into PurchaseUomQuantity FROM "UGP1", "OITM"
        WHERE "UGP1"."UgpEntry" = "OITM"."UgpEntry" AND
"UGP1"."UomEntry" = "OITM"."PUoMEntry" AND "OITM"."ItemCode" = ItemCode;

    QuantityAlready := NULL;
    SELECT SUM("FromQuantity") into QuantityAlready FROM
"XXX_INVTRANSFER_DRAFT_LINESBIN"
        WHERE "ItemCode" = ItemCode AND "FromBin" = SourceBin;

    IF QuantityAlready IS NOT NULL THEN
        Quantity := Quantity - QuantityAlready;
    END IF;

    WHILE Quantity > 0 DO
        QuantityPartial := Quantity;

        IF PurchaseUomQuantity IS NOT NULL AND QuantityPartial >
PurchaseUomQuantity THEN
            QuantityPartial := PurchaseUomQuantity;
        END IF;

        DestinationBin := NULL;

        SELECT TOP 1 "BinCode" into DestinationBin
            FROM "OBIN" LEFT OUTER JOIN "OIBQ" ON ("OBIN"."AbsEntry" =
```

```

"OIBQ"."BinAbs")
        WHERE "OBIN"."BinCode" LIKE OutLocationFilter
        AND LOCATE(ExcludeBinList, "OBIN"."BinCode") <= 0
        AND "OBIN"."BinCode" NOT IN (SELECT "ToBin" FROM
"XXX_INVTRANSFER_DRAFT_LINESBIN"
        WHERE "ToBin" LIKE OutLocationFilter)
        GROUP BY "BinCode" HAVING SUM("OnHandQty") = 0 OR
SUM("OnHandQty") IS NULL
        ORDER BY "BinCode";

        INSERT INTO #result VALUES (ItemCode, BatchNum, '',
QuantityPartial, SourceBin, DestinationBin, '', '');

        Quantity := Quantity - QuantityPartial;
        ExcludeBinList := ExcludeBinList || ' ' || DestinationBin;
    END WHILE;
END FOR;

SELECT * FROM #result;
DROP TABLE #result;
END;

call "BXINCOMINGSTRATEGY"()

```

8.3.2. Helper view

```

CREATE VIEW XXX_INVTRANSFER_DRAFT_LINESBIN
AS
SELECT DRF1.DocEntry, DRF1.ItemCode, DRF1.LineNum, fromBin.BinCode AS
FromBin,
fromBinLine.Quantity AS FromQuantity,
toBin.BinCode AS ToBin,
toBinLine.Quantity AS ToQuantity
FROM ODRF, DRF1
LEFT OUTER JOIN DRF19 fromBinLine ON (fromBinLine.ObjType = 67
AND fromBinLine.DocEntry = DRF1.DocEntry
AND fromBinLine.LineNum = DRF1.LineNum
AND fromBinLine.BinActTyp = 2)
LEFT OUTER JOIN DRF19 toBinLine ON (toBinLine.ObjType = 67
AND toBinLine.DocEntry = DRF1.DocEntry
AND toBinLine.LineNum = DRF1.LineNum
AND toBinLine.BinActTyp = 1)
LEFT OUTER JOIN OBIN fromBin ON (fromBin.AbsEntry = fromBinLine.BinAbs)
LEFT OUTER JOIN OBIN toBin ON (toBin.AbsEntry = toBinLine.BinAbs)
WHERE ODRF.ObjType = 67
AND DRF1.ObjType = 67
AND toBinLine.ObjType = 67

```

AND ODRF.DocEntry = DRF1.DocEntry

8.3.3. Example Replenishment Strategy

Algorithm:

1. See what stocks are on floor (*-1) locations and on upper (*-2, *-3, ec) locations for the same itemcode. (Only normal items are considered, and which have purchase uom groups defined) Only look in bin locations 01-F-* (ScanArea0)
2. If floor quantity \leq 50% of pallet quantity, look for upper locations. Also consider Inventory Transfer Draft documents already recorded. Recommend moving quantities from upper locations until floor quantity reaches 100% of pallet quantity if possible.

8.3.2.1. Example Replenishment Strategy SQL

```
DECLARE @ScanArea nvarchar(MAX)
DECLARE @FloorLocation4 nvarchar(MAX)
SET @ScanArea = '01-F-%'
SET @FloorLocation4 = '1'

DECLARE @FloorBin nvarchar(MAX)
DECLARE @ItemCode nvarchar(MAX)
DECLARE @FloorQuantity DECIMAL
DECLARE @UpperBin nvarchar(MAX)
DECLARE @UpperQuantity DECIMAL
DECLARE @PalletQty DECIMAL
DECLARE @QuantityPartial DECIMAL
DECLARE @LastBin nvarchar(MAX)
DECLARE @LastBinFloorQuantity DECIMAL
DECLARE @QuantityNeeded DECIMAL
DECLARE @QuantityAlready DECIMAL
DECLARE @RESULT TABLE (
  ItemCode nvarchar(MAX),
  BatchNumber nvarchar(MAX),
  SerialNumber nvarchar(MAX),
  Quantity DECIMAL,
  SourceLocation nvarchar(MAX),
  DestinationLocation nvarchar(MAX),
  GroupID nvarchar(MAX),
  Remarks nvarchar(MAX)
)
DECLARE curs CURSOR FOR
SELECT
  binupper.FloorBinCode2 AS FloorBin,
  binupper.ItemCode AS ItemCode,
  binfloor.OnHandQty AS FloorQuantity,
  binupper.BinCode AS UpperBin,
```

```

binupper.OnHandQty AS UpperQuantity,
palletQuantities.BaseQty AS PalletQty
FROM
(
SELECT OBIN.WhsCode + '-' + OBIN.SL1Code + '-' + OBIN.SL2Code + '-' +
OBIN.SL3Code
AS BinPrefix,
OBIN.WhsCode + '-' + OBIN.SL1Code + '-' + OBIN.SL2Code + '-' + OBIN.SL3Code
+ '-' +
@FloorLocation4 AS FloorBinCode2,
OBIN.BinCode, OIBQ.ItemCode, OIBQ.OnHandQty FROM OIBQ, OBIN WHERE
OBIN.BinCode LIKE
@ScanArea AND OBIN.SL4Code <> @FloorLocation4 AND OBIN.AbsEntry =
OIBQ.BinAbs
) binupper
LEFT OUTER JOIN
(
SELECT OBIN.WhsCode + '-' + OBIN.SL1Code + '-' + OBIN.SL2Code + '-' +
OBIN.SL3Code
AS BinPrefix, OBIN.BinCode, OIBQ.ItemCode, OIBQ.OnHandQty
FROM OIBQ, OBIN
WHERE OBIN.BinCode LIKE @ScanArea
AND OBIN.SL4Code = @FloorLocation4
AND OBIN.AbsEntry = OIBQ.BinAbs
) binfloor ON (binfloor.ItemCode = binupper.ItemCode AND binfloor.BinPrefix =
binupper.binprefix)
JOIN (
SELECT ItemCode, BaseQty FROM UGP1, OITM WHERE UGP1.UgpEntry = OITM.UgpEntry
AND
UGP1.UomEntry = OITM.PUomEntry
) palletQuantities ON (binupper.ItemCode = palletQuantities.ItemCode)
WHERE binfloor.OnHandQty IS NULL OR binfloor.OnHandQty <=
palletQuantities.BaseQty
/2 AND binupper.OnHandQty > 0
ORDER BY UpperBin
SET @LastBin = ''
SET @LastBinFloorQuantity = 0
OPEN curs
FETCH NEXT FROM curs INTO @FloorBin, @ItemCode, @FloorQuantity, @UpperBin,
@UpperQuantity, @PalletQty
WHILE @@FETCH_STATUS = 0
BEGIN
IF @FloorQuantity IS NULL BEGIN SET @FloorQuantity = 0 END
IF @LastBin <> @FloorBin BEGIN
SET @LastBin = @FloorBin
SET @QuantityAlready = NULL
SELECT @QuantityAlready = SUM(ToQuantity) FROM
XXX_INVTRANSFER_DRAFT_LINESBIN WHERE ItemCode = @ItemCode AND ToBin =
@FloorBin
IF @QuantityAlready IS NULL BEGIN SET @QuantityAlready = 0 END

```

```
SET @LastBinFloorQuantity = @FloorQuantity + @QuantityAlready
END
IF @LastBinFloorQuantity <= @PalletQty / 2 BEGIN
SET @QuantityNeeded = @PalletQty - @LastBinFloorQuantity
SET @QuantityPartial = @QuantityNeeded
IF @QuantityPartial > @UpperQuantity BEGIN SET @QuantityPartial =
@UpperQuantity END
SET @LastBinFloorQuantity = @LastBinFloorQuantity + @QuantityPartial
INSERT INTO @RESULT (ItemCode, Quantity, SourceBin, DestinationBin)
VALUES (@ItemCode, @QuantityPartial, @UpperBin, @FloorBin)
END
FETCH NEXT FROM curs INTO @FloorBin, @ItemCode, @FloorQuantity, @UpperBin,
@UpperQuantity, @PalletQty
END
CLOSE curs
DEALLOCATE curs
SELECT * FROM @RESULT
```

Manipulating DataRepeater (List)

You will need a splitter function, to separate data. If it does not exist, then you can create them with these queries:

```
CREATE FUNCTION [dbo].[SplitStringForDataRepeater]
(
    @string NVARCHAR(MAX)
)
RETURNS @output TABLE(splitdata NVARCHAR(MAX)
)
BEGIN
    DECLARE @start INT, @end INT
    SELECT @start = 1, @end = CHARINDEX('##', @string)
    WHILE @start < LEN(@string) + 1 BEGIN
        IF @end = 0
            SET @end = LEN(@string) + 2
        INSERT INTO @output (splitdata)
        VALUES(SUBSTRING(@string, @start, @end - @start))
        SET @start = @end + 2
        SET @end = CHARINDEX('##', @string, @start)
    END
    RETURN
END
```

```
CREATE FUNCTION [dbo].[SplitStringForDataRepeater2]
( @string NVARCHAR(MAX), @string2 NVARCHAR(MAX) )
RETURNS @output TABLE(splitdata NVARCHAR(MAX) , splitdata2 NVARCHAR(MAX))
```



```

BEGIN
    DECLARE @start INT, @end INT , @start2 INT, @end2 INT
    SELECT @start = 1, @end = CHARINDEX('##', @string) , @start2 = 1, @end2
=CHARINDEX('##', @string2)
    WHILE @start < LEN(@string) + 1 BEGIN
        IF @end = 0
        BEGIN
            SET @end = LEN(@string) + 2
            SET @end2 = LEN(@string2) + 2
        END
        INSERT INTO @output (splitdata, splitdata2)
        VALUES(SUBSTRING(@string, @start, @end - @start),SUBSTRING(@string2,
@start2, @end2 - @start2))
        SET @start = @end + 2
        SET @end = CHARINDEX('##', @string, @start)
        SET @start2 = @end2 + 2
        SET @end2 = CHARINDEX('##', @string2, @start2)
    END
    RETURN END

```

1. Add a string

This customization will add a string to the Warehouse field on Sales Order Issue Lines screen.

Query name

```
BXMobileWH9_SalesIssueLinesScreen_DataRepeater_InternalDataLoad
```

Query content

```

SELECT
    S.splitdata + ' Additional Info' AS [DataRepeater.UIWarehouse] from
    dbo.SplitStringForDataRepeater($[DataRepeater.UIWarehouse]) S

```

2. Add information from RDR1

This customization will add information from RDR1 table by lineNumber.

We can load DocNumber from \$[TextSalesOrder] field, and we can get the exact number with SUBSTRING. SplitStringForDataRepeater2 function splits UIWarehouse UILineNumber from the datarepeater, and then we can use them to connect to SAP table, and we can use the splitted values in the query.

Query name

```
BXMobileWH9_SalesIssueLinesScreen_DataRepeater_InternalDataLoad
```

Query content

```
SELECT
```

```
S.splitdata + ' - ' + ItemCode AS [DataRepeater.UIWarehouse] FROM
dbo.SplitStringForDataRepeater2(      [DataRepeater.UIWarehouse] ,
      [DataRepeater.UILineNumber] ) S
LEFT JOIN
(SELECT
      '#'+ cast(LineNum + 1 as varchar(10)) as ln,
      ItemCode
FROM
      RDR1 left join ORDR on RDR1.DocEntry = ORDR.DocEntry
WHERE
      ORDR.DocNum = SUBSTRING([TextSalesOrder] ,0,CHARINDEX('*',
[TextSalesOrder] )) )
      as RDR1Line
ON S.splitdata2 = RDR1Line.ln
```

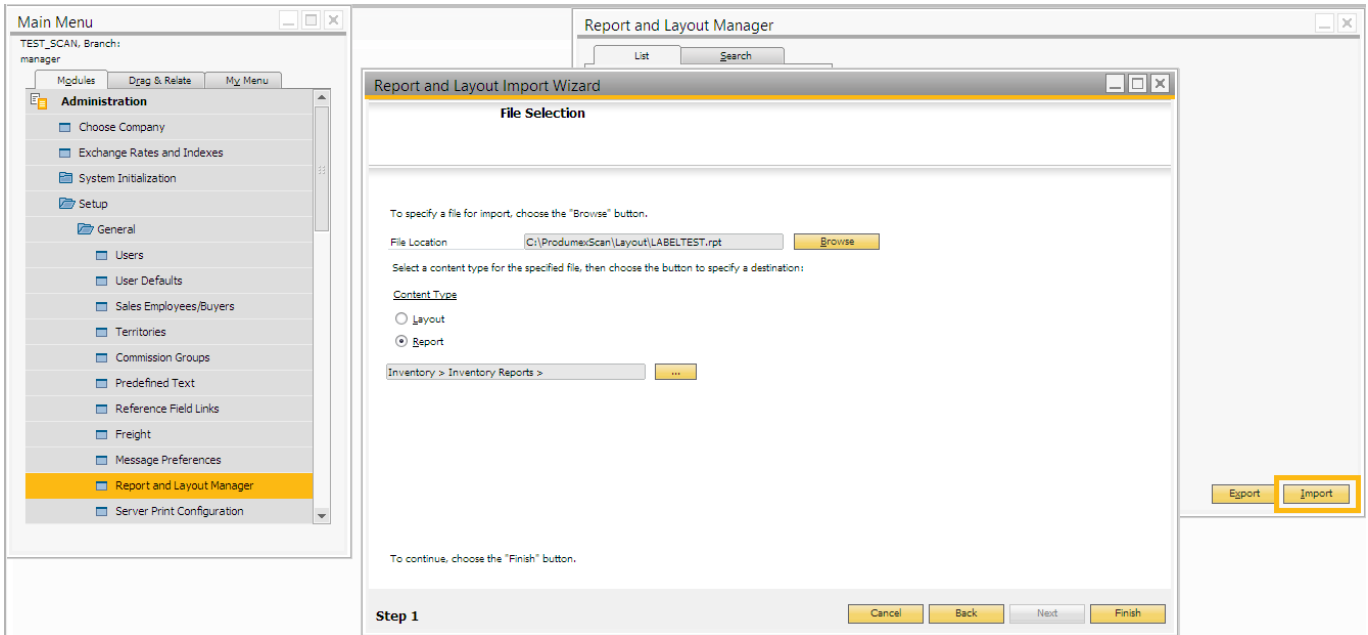
Custom printing

1. Custom Layout Printing

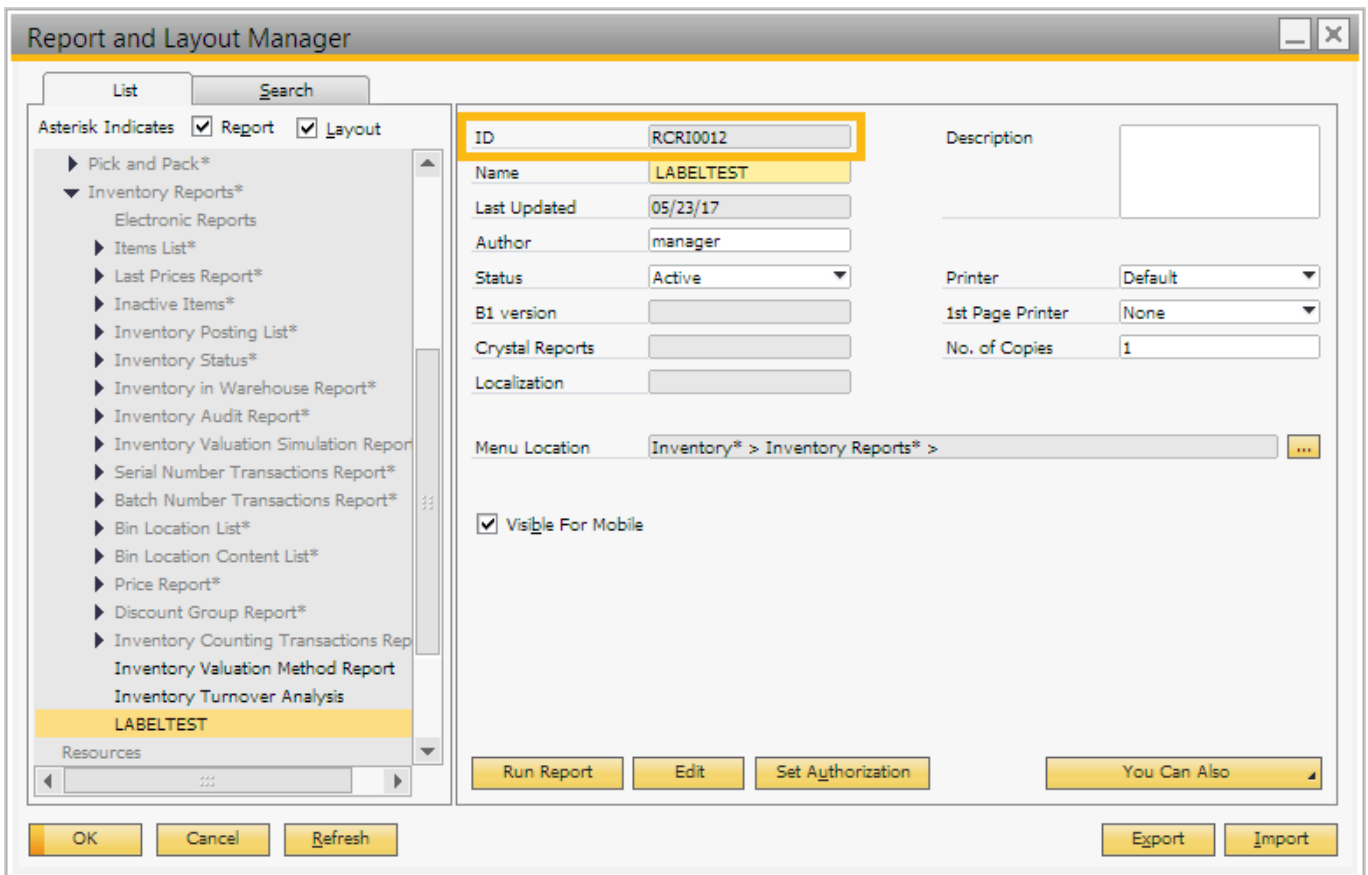
Report printing can be customized in Produmex Scan by using the customization technology described in: [Customization Technology for Produmex Scan](#). The report used in the user queries must be defined in SAP Business One.

1.1. Import the report

Import the report in SAP Business One with the *Report and Layout Import Wizard*. Select 'Inventory > Inventory Reports' as the location.



To see the details of the report, open the Report and Layout Manager and select the report from the Inventory Reports. The report ID will identify the report in the user queries.

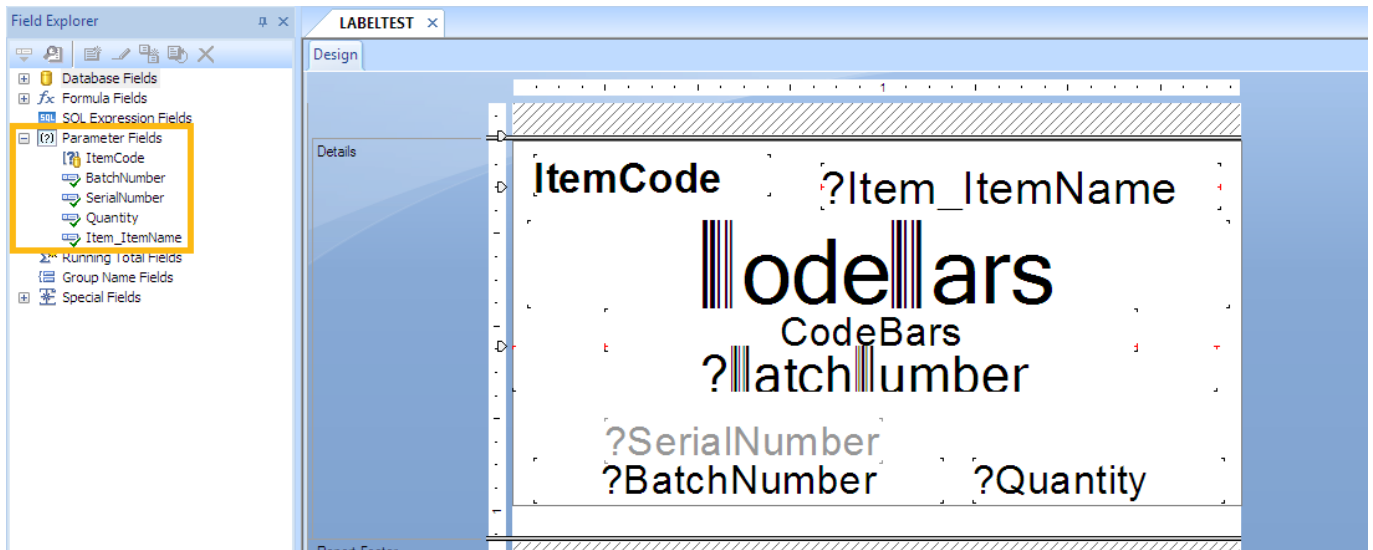


1.2. Examples

1.2.1. Add customization on the 'Done' button event for the Create GR PO screen

Create the user Query in the Query Manager. The name of the user query must be the name of the Produmex Scan event.

Include the report ID and the report parameters in the user query.



Query name: *BXMobileWH9_CreateGoodsReceiptPOQuantitiesNormalScreen_OK_clicked*

Example query:

SQL

```
SELECT
  'RCRI0012' "PrintLayout$",
  SUBSTRING ($[TextItem], 1 , CHARINDEX ('*', $[TextItem]) - 2 )
  "Print_ItemCode",
  SUBSTRING ($[TextItem], CHARINDEX ('*', $[TextItem]) + 2, LEN
  ($[TextItem]) - CHARINDEX ('*', $[TextItem])) "Print_Item_ItemName",
  '' "Print_SerialNumber",
  '' "Print_BatchNumber",
  $[DataRepeater.SelectedUIOnHandQuantity] "Print_Quantity",
  'PDFCreator' "PrintPrinter$",
  'Document PRINTING' "Message$", 'I' "MessageType$"
```

HANA

```
SELECT
  'RCRI0012' "PrintLayout$",
  SUBSTRING ($[TextItem] , 1 , LOCATE ($[TextItem], '*') - 2 )
  "Print_ItemCode",
  SUBSTRING ($[TextItem], LOCATE ($[TextItem], '*') + 2, LENGTH
  ($[TextItem]) - LOCATE ($[TextItem], '*') ) "Print_Item_ItemName",
  '' "Print_SerialNumber",
  '' "Print_BatchNumber",
  $[DataRepeater.SelectedUIOnHandQuantity] "Print_Quantity",
  'PDFCreator' "PrintPrinter$",
  'Document PRINTING' "Message$", 'I' "MessageType$"
```

The user query does the following:

Sets the parameters of the selected report to the values entered on the screen and sends it to the defined printer. Then displays the 'Document printing' message.

Report parameters in the example:

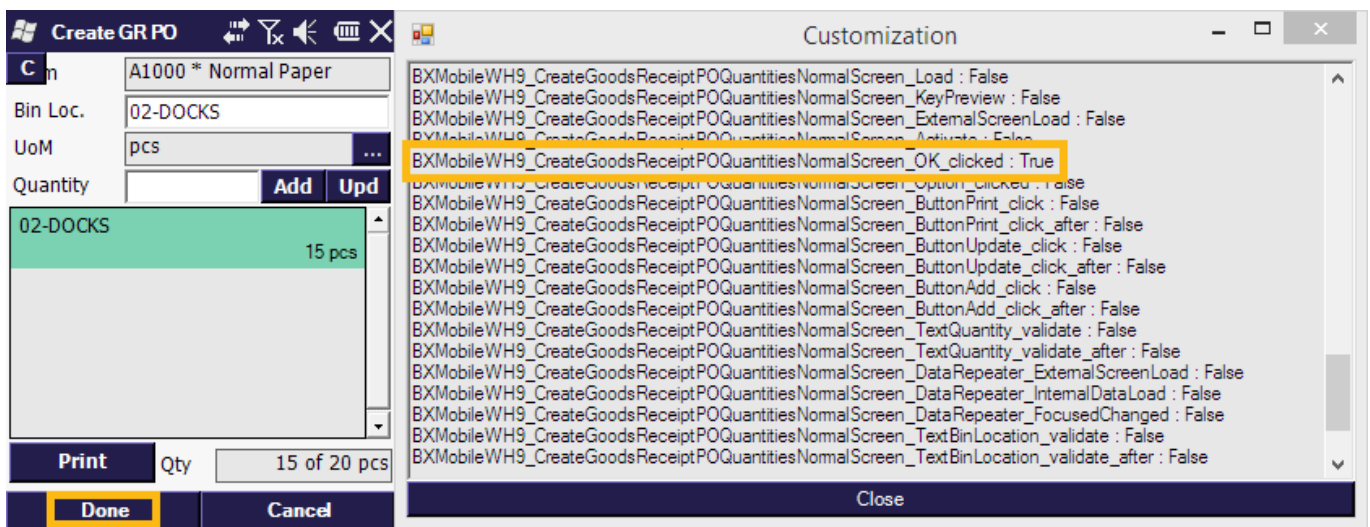
- Item code and name
- On hand quantity
- Batch number
- Serial number

Adjust the example query.

Replace the *PrintLayout\$* value with the Report ID (in the example the report ID is RCRI0012).
 Replace the *PrintPrinter\$* value with your printer name (in the example the printer name is PDFCreator).

The label will be printed with the printer set in the user query regardless of the default printer of the employee.

By default only one label is printed. Adjust the value of the labels with the *PrintCopies\$* parameter. The label is printed after the 'Done' button is pressed on the Create GR PO Quantities screen.



1.2.2. Print label for the delivery selected on the 'Delivery' field after the report ID is added on the Packing screen

Add a new custom 'Label' field. Insert the following record to the [Customization Fields user table](#):

Field Name	Labels	Screen
RPTCode	Label	PackingScreen

Create two new user queries in the Query Manager.

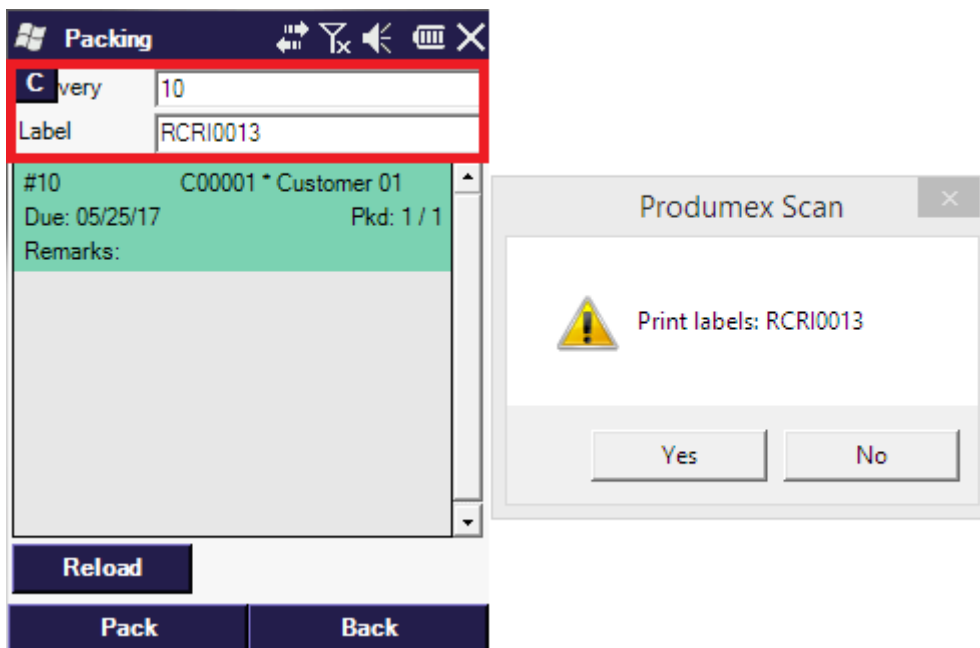
The first query will trigger the printing if the Label field is not empty. Link this user query to the

RPTCode field validation event.

After the report ID is added to the field, a confirmation message will pop up. Press the 'Yes' button to print the label.

Query name: *BXMobileWH9_PackingScreen_RPTCode_validate*

```
IF ${RPTCode}<>' ' AND ${TextDeliveryDocNum}<>' '  
SELECT  
  'Print labels: ' + ${RPTCode} AS 'Message$',  
  'YM' AS 'MessageType'
```



The second query will define the printer and the report parameter values. Link this user query to the *validation_after* event of the custom Label field. The query will run if the user presses the 'Yes' button on the confirmation message screen.

Query name: *BXMobileWH9_PackingScreen_RPTCode_validate_after*

```
IF ${RPTCode}<>' ' AND ${TextDeliveryDocNum}<>' '  
SELECT ${RPTCode} AS PrintLayout$,  
  (SELECT DocEntry FROM ODLN WHERE DocNum=${TextDeliveryDocNum}) AS  
  [Print_DocKey@],  
  'PDFCreator' AS PrintPrinter$,  
  'Report print: ' + ${RPTCode} AS 'Message$', 'I' AS 'MessageType'
```

Replace the *PrintPrinter\$* value with your printer name (in the example the printer name is PDFCreator).

2. Advanced printing configurations for Produmex Scan

With the advanced printing configurations printing issues caused by incorrect server/database connection settings in Crystal Reports can be solved.

To add the advanced printing configurations, run the following query on the database:

SQL

```
INSERT INTO [@BXPCONFIG] (Code, Name, U_BXPDescr, U_BXPValue, U_BXPVType,
U_BXPRowVr)
VALUES ('BXMPRA0', 'BXMPRA0', 'Crystal Reports connection parameters', '54',
1, NULL)
```

A new record will be inserted to the BXPCONFIG table. With this record the following parameters can be set:

- PRINTERADVANCEDOPTIONS_SETTABLELOGON = 1;
- PRINTERADVANCEDOPTIONS_SETTABLECONNECTION = 2;
- PRINTERADVANCEDOPTIONS_SETSUBREPORTS = 4;
- PRINTERADVANCEDOPTIONS DISSOCIATESIZE = 8;
- PRINTERADVANCEDOPTIONS_USEPRINTERSETTINGS = 16;
- PRINTERADVANCEDOPTIONS_USECONNECTIONCLONE = 32;
- PRINTERADVANCEDOPTIONS_USESETTINGWITHNAME = 64;

The value of **BXMPRA0** is the sum of the value of the enabled parameters.

The default and recommended value is 54. It means that the Settable connection (2), the Set sub reports (4), the Use printer settings (16) and the Use connection clone (32) parameters are enabled (2+4+16+32=54) by default.

Do not change the default value. If the issue persists, please contact Produmex support.

Enabled settings:

- *Settable connection* (2): Creates a new connection structure with the actual parameters.
- *Set sub reports* (4): Applies the (1) and (2) setting to the sub reports as well.
- *Use printer settings* (16): Uses a non-standard access to printer settings.
- *Use connection clone* (32): Uses a clone of the connection structure.

Other settings that can be enabled:

- *Settable log on* (1): Resets the server/database connection to the actual in the tables of the existing structure. This setting is not taken into account if the Settable connection (2) setting is also enabled.
- *Dissociate size* (8): Enables the 'Dissociate Formatting Page Size and Printer Paper Size' option.
- *Use setting with name* (64): Uses both the standard and non-standard access to the printer settings.

Last update: 2017/09/27 07:36 implementation:scan:customizationcomplete <http://wiki.produmex.name/doku.php?id=implementation:scan:customizationcomplete>

From:

<http://wiki.produmex.name/> -

Permanent link:

<http://wiki.produmex.name/doku.php?id=implementation:scan:customizationcomplete> 

Last update: **2017/09/27 07:36**