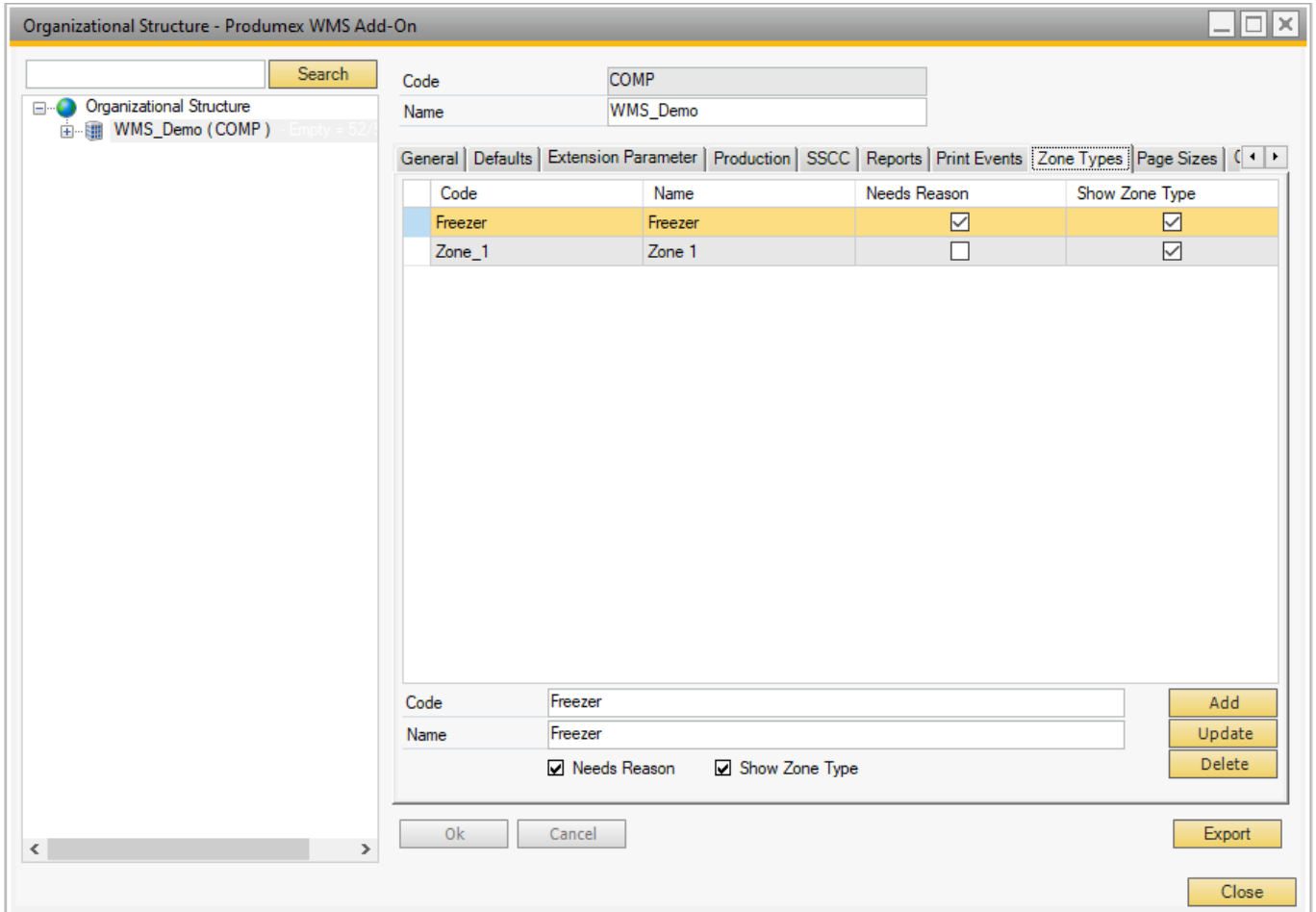


2.8. Zone Types tab

The Zone Types tab allows for defining Zones Types in your company. Zone Types can be assigned to specific items depending on their storage conditions.

Note: When a Zone Type is created, its code cannot be changed.



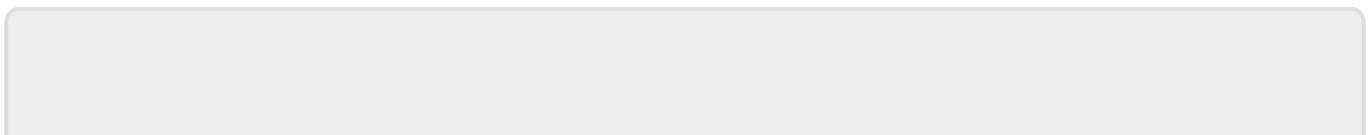
Needs Reason

Enable the Needs Reason setting if a reason must be provided when receiving or moving the item into a zone with the given zone type.

Show Zone Type

If the setting is enabled, the zone type is shown during the reception of an item.

During the reception of items with zone types, an optional information screen can be displayed to remind the operators in which zone(s) the product can be stored. This is for information purposes only, and while the screen asks the operator to select a zone, no action is taken. The screen is displayed only if the item being received has at least one zone type with the Show Zone Type option enabled.



From:

<https://wiki.produmex.name/> - **Produmex**

Permanent link:

<https://wiki.produmex.name/doku.php?id=implementation:wms:zonetypes>

Last update: **2020/09/27 09:05**

