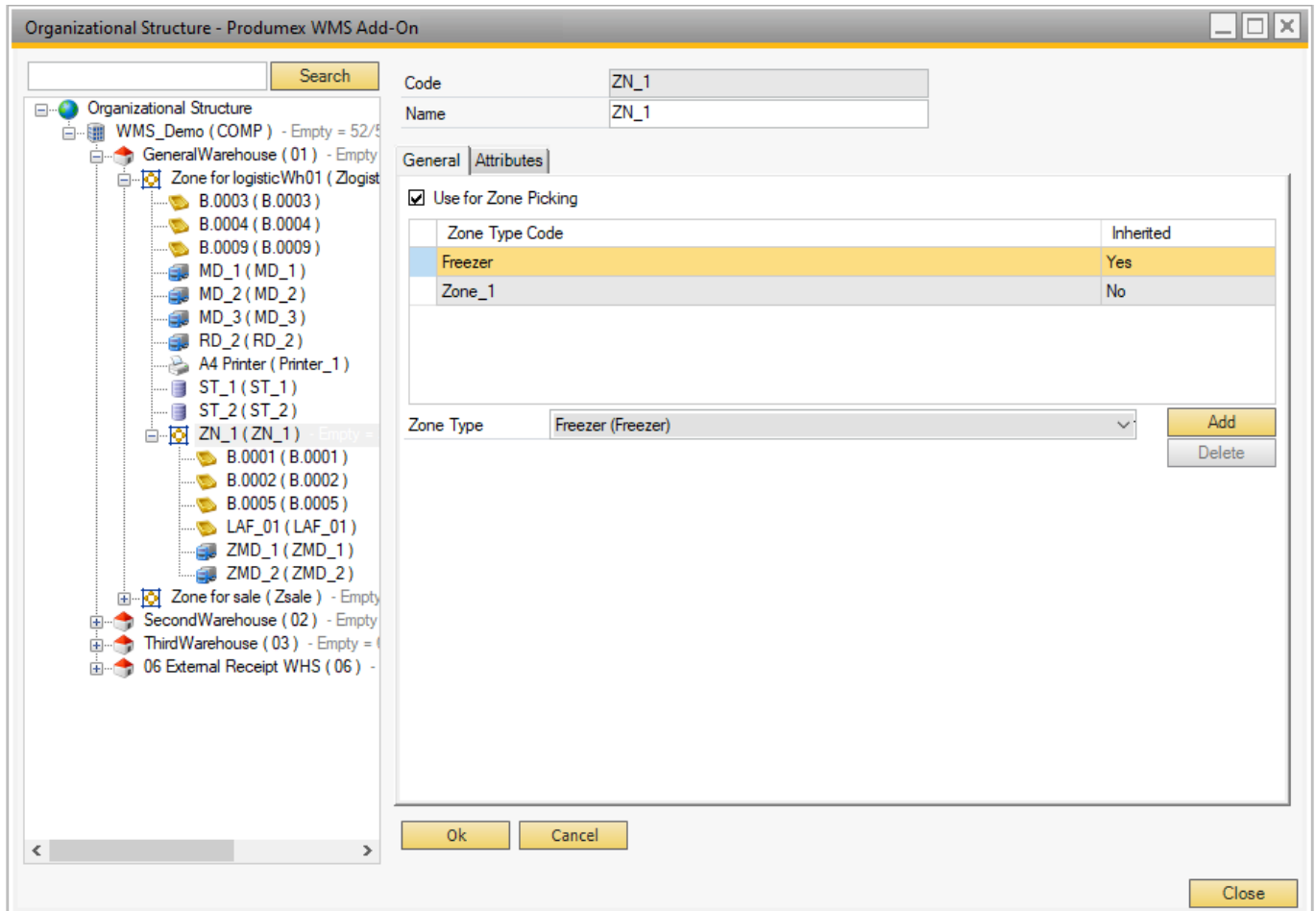


Organizational Structure: Zone settings

On the level of zones the following general settings and attributes can be defined.

General tab



Use for Zone Picking

If the setting is enabled, the zone can be selected during the [Zone Picking Flow](#).

Zone Type

The Zone Type drop-down menu lists the zone types that are configured on the [Zone Types](#) tab of the Organizational Structure. More than one zone type can be added to the zone.

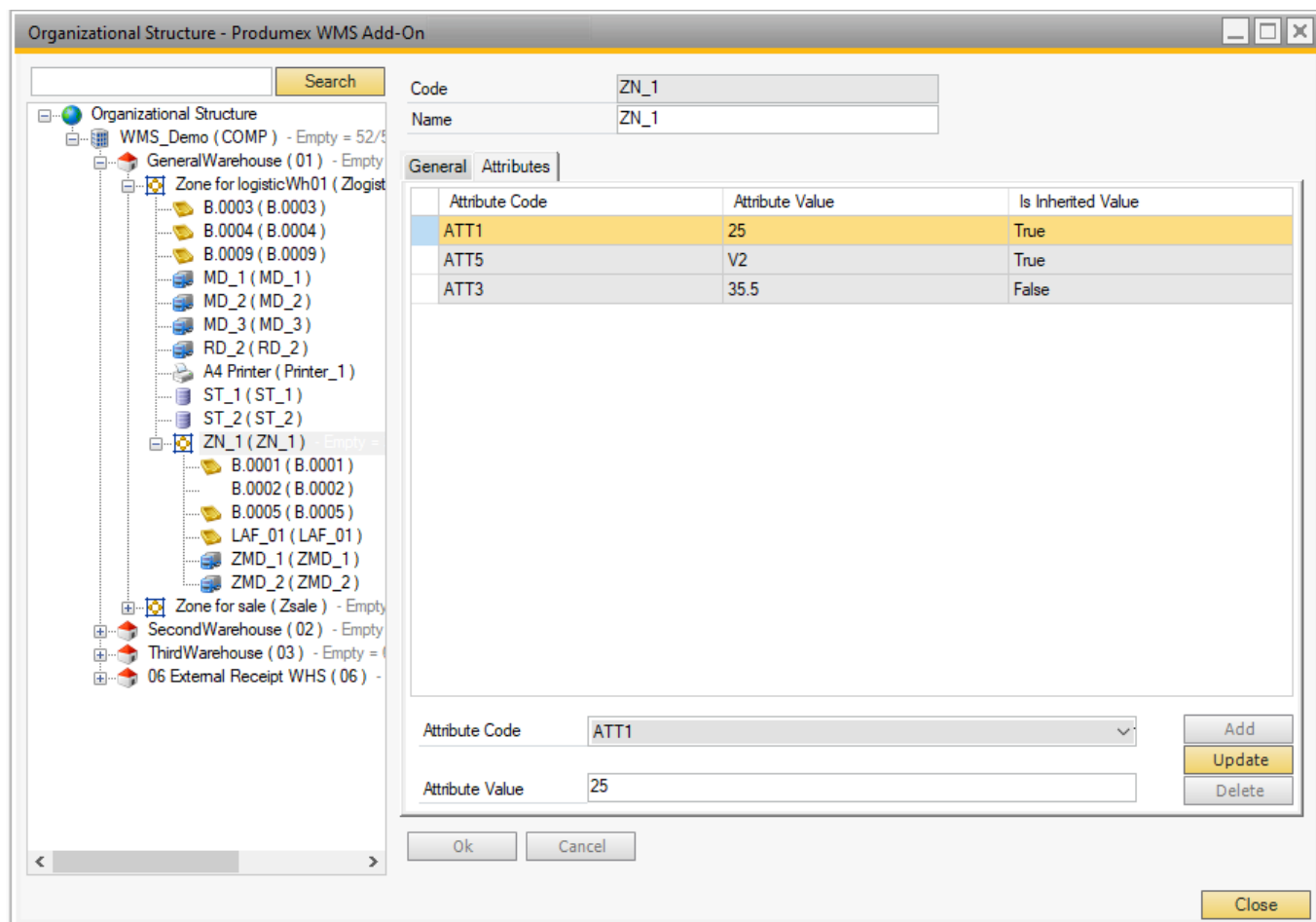
If the zone is the main zone and has one or more sub-zones, the zone type of the main zone also applies to its sub-zones. When a sub-zone is created, it automatically inherits the zone type of the main zone. For more information see [Working with Zones and Zone Types](#).

Inherited

The Inherited column shows Yes if the zone type is inherited from the main zone. The inherited zone type cannot be deleted manually on the level of the sub-zone. If the zone type of the main zone is deleted, the system also deletes the given zone type of the sub-zones.

Attributes tab

On the Attributes tab you can add location attribute types and define attribute values for the zone.



Attribute Code

The Attribute Code drop-down menu lists those attribute types that are defined on the [Produmex Location Attribute Types \(PMX_OSAT\)](#) default form.

Attribute Value

In the attribute value field you can add values to the location attribute based on the convertor defined for the location attribute type.

- In case of location attribute types with convertor String, Int, Double and Date, you can manually add values in the Attributes Value field.
- In case of location attribute types with List convertor type, the Attribute Value drop-down menu lists the valid values for the selected location attribute type. The list of the drop-down menu can be defined on the [Valid Values for Produmex Location Attributes \(PMX_OAVV\)](#) default form.

Is Inherited Value

If the Is Inherited Value column shows True, the attribute type and the attribute value are inherited from the main zone.

For information on working with location attributes see [Put Away Strategy and Move Restrictions](#).

Organizational Structure - Produmex WMS Add-On

Code: ZN_1
Name: ZN_1

Attribute Code	Attribute Value	Is Inherited Value
ATT1	25	True
ATT5	V2	True
ATT3	35.5	False

True: attribute type inherited from the main zone

Attribute Code: ATT1
Attribute Value: 25

Buttons: Add, Update, Delete, Ok, Cancel, Close

From: <https://wiki.produmex.name/> - **Produmex**

Permanent link: <https://wiki.produmex.name/doku.php?id=implementation:wms:zonesettings>

Last update: **2021/04/05 21:04**

