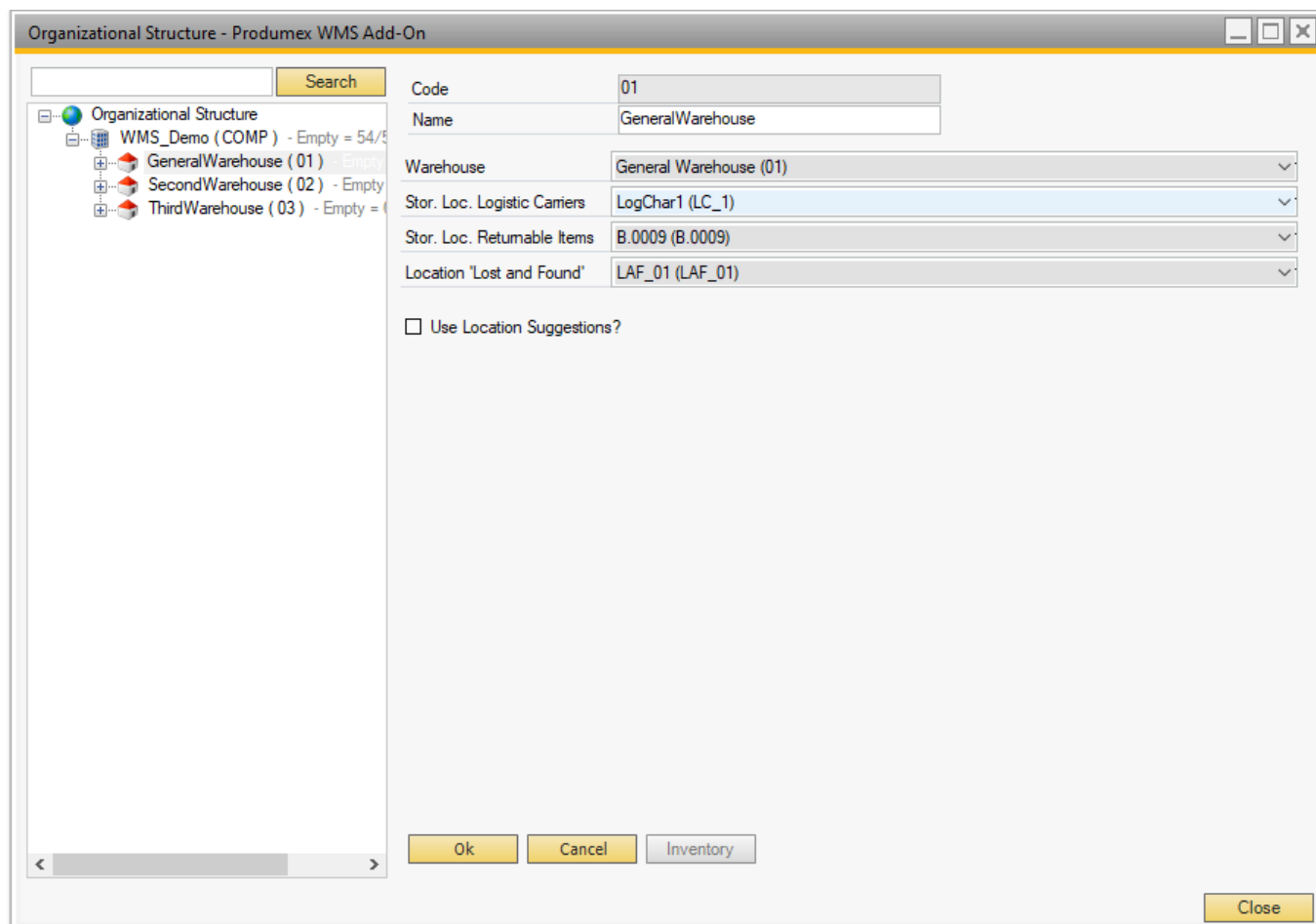


3.1. Warehouse settings

On the warehouse level the following settings can be defined:



Warehouse

This is the link between the warehouse defined in Produmex and the warehouse in SAP Business One (Cfr. Administration → Setup → Inventory → Warehouses.)

Each SAP warehouse can only be linked once in Produmex warehouses.

Stor. Loc. logistic carriers

The location in the warehouse where the logistic carriers are located (in case you have indicated at the company level that logistic carriers have to be stored at one location per warehouse).

This location needs to be a pick location!

Stor. Loc. returnable items

The storage location for the returnable items. This is used when inventory returnable items are used.

Location 'Lost and Found'

The 'Lost and Found' location for that warehouse. All item differences counted during cycle counting (indirect cycle counting) will be moved to the Lost and found location in case this is set up on the [CycleCountController](#).

Stock on storage locations set for Lost and found, logistic carriers, ... are not taken in account to create pick list (proposals).

Use location suggestions?

Set whether location suggestions will be used for move in or to this warehouse. This is used in the [Location Suggestions](#) functionality.

From:
<https://wiki.produmex.name/> - **Produmex**

Permanent link:
<https://wiki.produmex.name/doku.php?id=implementation:wms:warehousesettings>

Last update: **2020/07/11 20:07**

