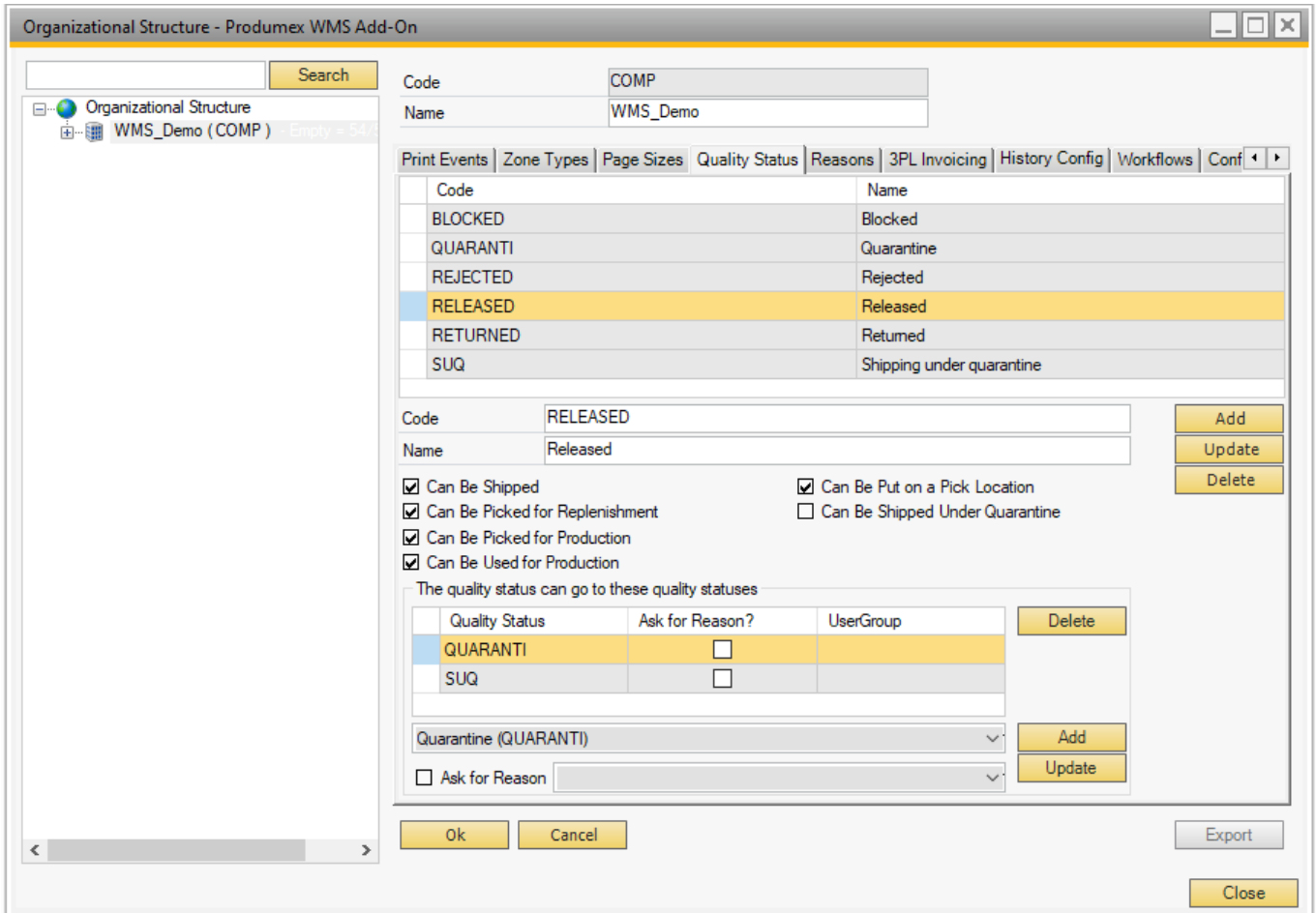


2.10. Quality Status tab

The “Quality status” allows you to define the applicable quality statuses for your company. For each quality status it is possible to define whether or not an item with that specific quality status can be shipped and/or picked for production and/or picked for a replenishment order. Furthermore you can specify to which quality status a specific status can be changed: e.g. “blocked” can be changed to “released”.



Ask for reason

On the transition between quality statuses the user can set whether a reason needs to be entered for the change.

Can be shipped

The quality status is allowed to be picked and shipped.

Can be picked for replenishment

Indicates if the stock can be used to replenish pick locations.

Can be picked for production

Indicates if the stock can be used pick for production.

Can be used for production

Indicates if the stock can be used for production. Stock that does not have this option, are not allowed to be stored on production lines.

Can be put on a pick location

Indicates if the stock can be stored on pick locations.

Can be shipped under quarantine

Indicates that the stock is in quarantine, but still allowed to ship. Setting 'Shipping quality option' on the sales order line can be changed to allow shipment of these goods.

Quality status transitions

This lists the quality statuses to where the current quality status can be changed to.

It is possible to flag the setting **Ask for reason**. By doing this, when the user changes the quality status through the inventory report, he will have to select a reason for this quality status change.

It is also possible to limit users from making certain quality status transitions.

This is done by selecting a [user group](#) for the transaction.

If a user wants to perform a quality status transition, he is only allowed to change it to a quality status that has no user group, or a quality status that has the user group he is assigned to.

Please note that reasons or user group limitations do not apply when moving stock to a location with a predefined quality status.

From:

<https://wiki.produmex.name/> - **Produmex**

Permanent link:

<https://wiki.produmex.name/doku.php?id=implementation:wms:qualitystatus>

Last update: **2020/09/27 09:10**

