

3.5. Register the Produmex add-on

The following section describes the steps of registering the Produmex add-on component in Sap Business One on premise or in SAP Cloud.

Note: Make sure you run SAP Business One Client as administrator.

3.5.1. Register the add-on on premise

1. In SAP Business One navigate to Administration > Add-Ons > Add-On Administration.
2. Click on the Register Add-On button.
3. Browse the add-on loader installation .ard file after clicking on the ... button. The installation file is located in the installation zip folder \<SBO Version>\AddOnLoader.



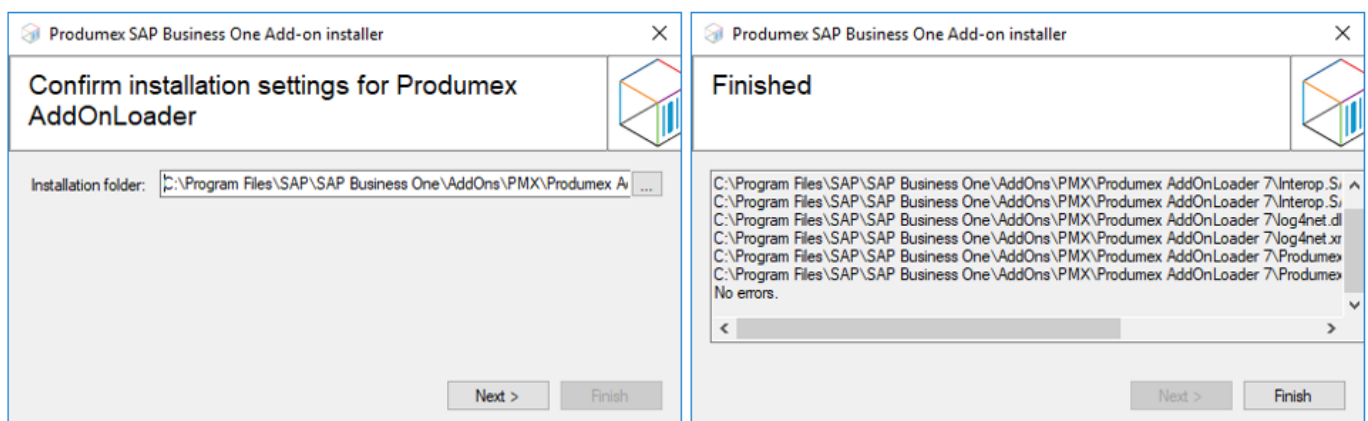
When selecting this file the associated add-on installation package is also opened.



4. Check the *Install as Part of Registration* checkbox and click OK.



5. On the opening Add-on Installer screen select the installation folder, then click Next and then click Finish.



6. When the installation is finished, close and then restart SAP Business One.
7. In SAP Business One navigate to Administration > Add-Ons > Add-On Administration.
8. On the *Company Preferences* tab select the Produmex Add-On Loader. Tick the *Active* checkbox and set the Default Group.



9. On the *User Preferences* tab select the user *manager* to check if the Preferences is set to the wished value for the Produmex Add-on Loader.

10. Click Update.



3.5.2. Register the add-on in SAP Cloud

3.5.2.1. Install the Add-On Loader on the Cloud Control Center

1. Create a Produmex sub folder within the folder you defined as the Extension Repository Path in Cloud Control Center.

2. Upload the zip folder of the lightweight installer to this Produmex folder. Do not unzip the file.

The zip folder is named:

`Produmex_WMS_<versionnumber>.<SB0version>_AddOnLoader_lightweight.zip`.

It can be found in the installation zip folder of Produmex WMS:

`Produmex_WMS_<versionnumber>.<SB0version>\<SB0version>\AddOnLoader`.

Regardless of the environment displayed in the name of the Produmex WMS installation folder, the lightweight installer zip contains both the x32 bit and the x64 bit installation files.

3. On the CCloud Control Center, navigate to Landscape Management > Extensions.

4. Check whether the installation file is listed on the *Extensions* grid.

5. Click on the *Synchronize All* button to install the Produmex Add-On Loader and confirm that you would like to synchronize all extensions by clicking Yes.



If the installation is successful, on the opening Synchronization Report screen the status of the Produmex Add-On Loader is successful. The installation zip is automatically moved to the Produmex Shared Repository folder.

Synchronization Report

Synchronization Report

	Name	Provider	Type	Version	Mode	Time	Status
	Produmex AddOnLoader 7	Produmex	Add...	18.2.1.5	Manual	5/2...	Successfu

...

Close

3.5.2.2. Deploy the Add-On Loader to the Service Unit

When upgrading the add-on to a new version, make sure that the add-on is not running on any presentation server. If there is a running add-on, the upgrade will fail.

The next step is to deploy the add-on loader on every service unit where you would like to use it.

1. Navigate to Landscape Management > Service Units. O
2. n the *Service Units* grid select the target service unit.
3. On the *Service Unit Details* grid go to the *Extensions* tab and click on the Deploy button.
4. Follow the steps of the Extension Deployment Wizard.
5. Select the Produmex Add-On Loader at the *Select Extensions* step, then finish the deployment.



3.5.2.3. Assign the add-on loader to the tenant(s)

The next step is to assign the Produmex Add-On Loader to the tenant(s) where you would like to use it.

Note: This step is not required in the case of a version upgrade.

1. Go to Customer Management > Tenants.
2. Select the tenant on the *Tenants* grid.
3. On the *Tenant Details* grid navigate to the *Extensions* tab, then click on the Assign button.

4. Follow the steps of the Extension Assignment Wizard.

5. In the *Select Extensions* step select the Produmex Add-On Loader, then finish the assignment.



3.5.3.Update database

Note: This step is not required in the case of a version upgrade.

1. In SAP Business One navigate to Administration > Add-Ons >Add-On Manager > *Installed Add-Ons* tab.

2. If the Produmex Add-On Loader is not running, select it and click Start.

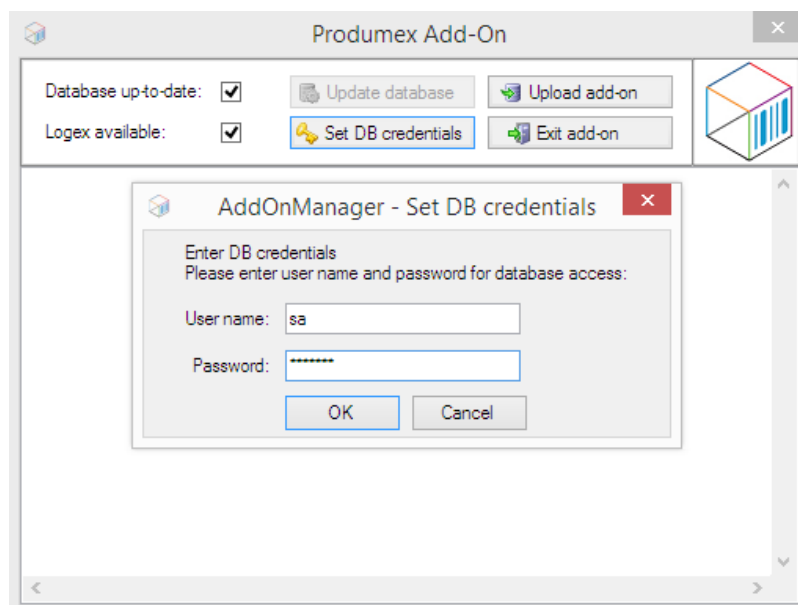


3. On the opening screen click on the **Update Database** button to perform the needed database changes. If the database is already updated, *Database up-to-date* checkbox is checked and this step can be skipped.

4. Click on the **Set DB credentials** button.

5. On the opening form enter the DB credentials.

6. After the credentials are set, click on the **Exit Add-On** button to download the files needed for the add-on.



From:

<https://wiki.produmex.name/> - **Produmex**

Permanent link:

https://wiki.produmex.name/doku.php?id=implementation:wms:install_registeraddon&rev=1570712362

Last update: **2019/10/10 12:59**

