

9. Packing flows

Because the packing station is a fixed location, most of the packing flows run on a fixed touchscreen terminal. The flows on the touchscreen terminal vary in the inputs used for identifying the items to be packed.

- **Packing flow**: the flow uses movable location(s) as input
- **Consolidated packing flow**: the flow uses pick list(s) and logistic unit(s) as input.
- **Item packing flow**: the flow uses a moveable location as an input, but the pick list can be identified by scanning an item.
- **Cash register packing**: the flow uses a pick list as an input. The user can perform the picking and packing in one step.

Produmex also provides a packing flow called **Mobile packing flow** which runs on a scanner. Because the flow does not need a fixed touchscreen, there are less constraints for the packing process with respect to the available packing stations.

Creating button specific barcodes

During the packing flows running on a fixed touchscreen terminal, different buttons will be enabled for you on the screen. There are six buttons, which you do not necessarily have to press on the screen:

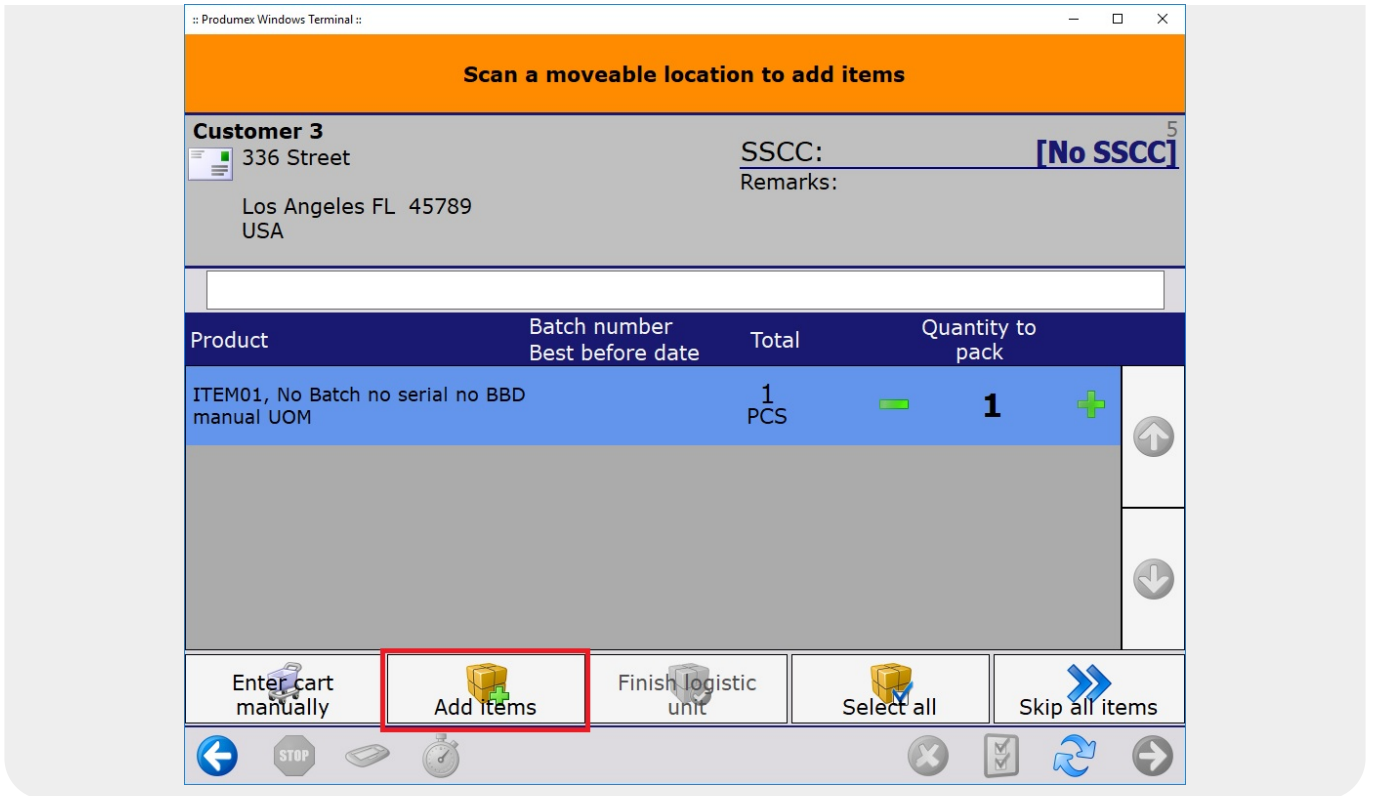
1. Add SSCC
2. Enter cart manually
3. Add items
4. Finish logistic unit
5. Select all
6. Skip items

Instead, you have the option to create barcodes which you can scan. The barcode needs to start with '<BUTTON>' and then you need to add the translation key of the given button.

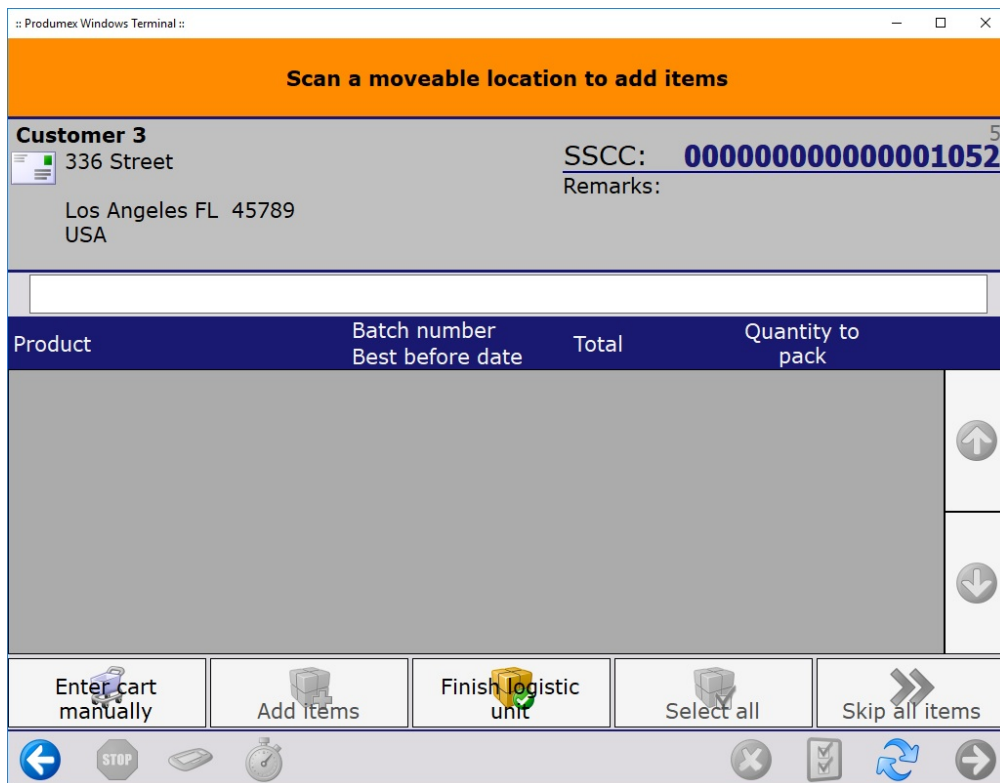
Button	Examples for barcodes
1.Add SSCC	<BUTTON>MSG_BUTTON_PACKING_ADD_SSCC
2.Enter cart manually	<BUTTON>MSG_BUTTON_PACKING_IDENTIFY_CART
3.Add items	<BUTTON>MSG_BUTTON_PACKING_ADD_ITEMS
4.Finish logistic unit	<BUTTON>MSG_BUTTON_PACKING_FINISH_PALLET
5.Select all	<BUTTON>MSG_BUTTON_SELECT_ALL
6.Skip items	<BUTTON>MSG_BUTTON_PACKING_SKIP_ITEMS

Example

On the first screen below you have the option to press the button Add items manually. **Instead of pressing the button, you can scan your barcode** and the system will press the button automatically.



Both actions will navigate you to the next screen where you can proceed with the Finish logistic unit button.



In the next sections you will have several opportunities to use the six buttons. Whenever any of them is mentioned, please keep in mind that you can scan your own button specific barcode instead.

From:

<https://wiki.produmex.name/> - **Produmex**

Permanent link:

https://wiki.produmex.name/doku.php?id=implementation:wms:flows_packing

Last update: **2022/06/16 11:28**

