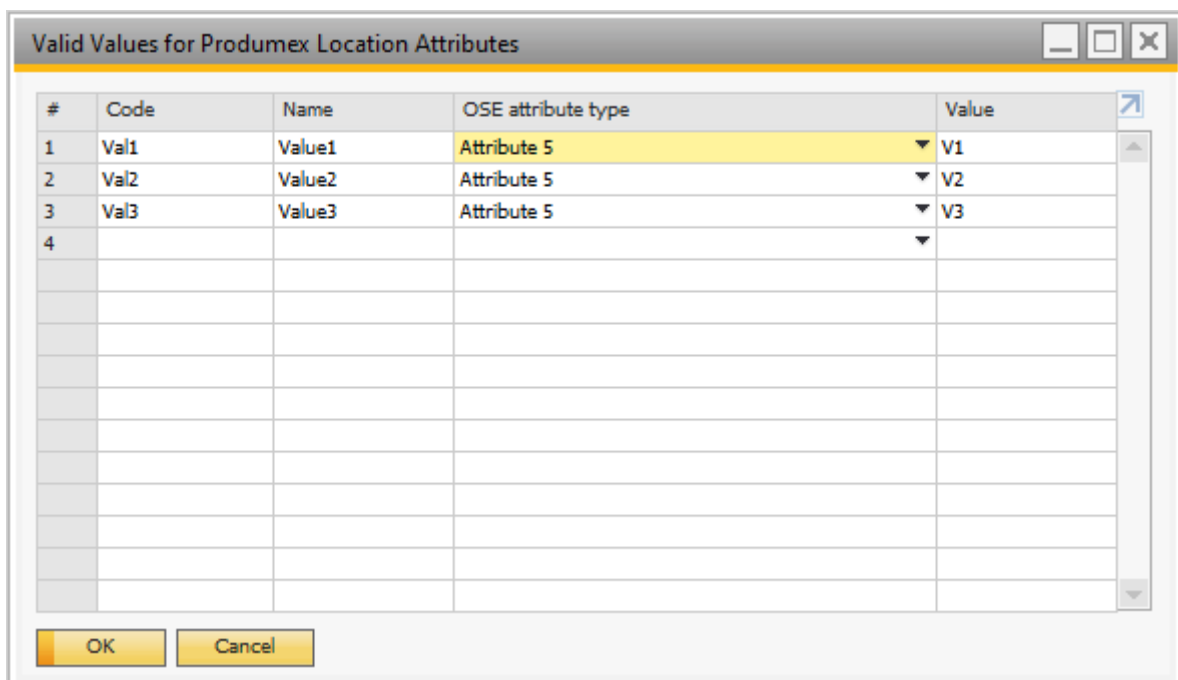


2. Valid Values for Produmex Location Attributes (PMX_OAVV)

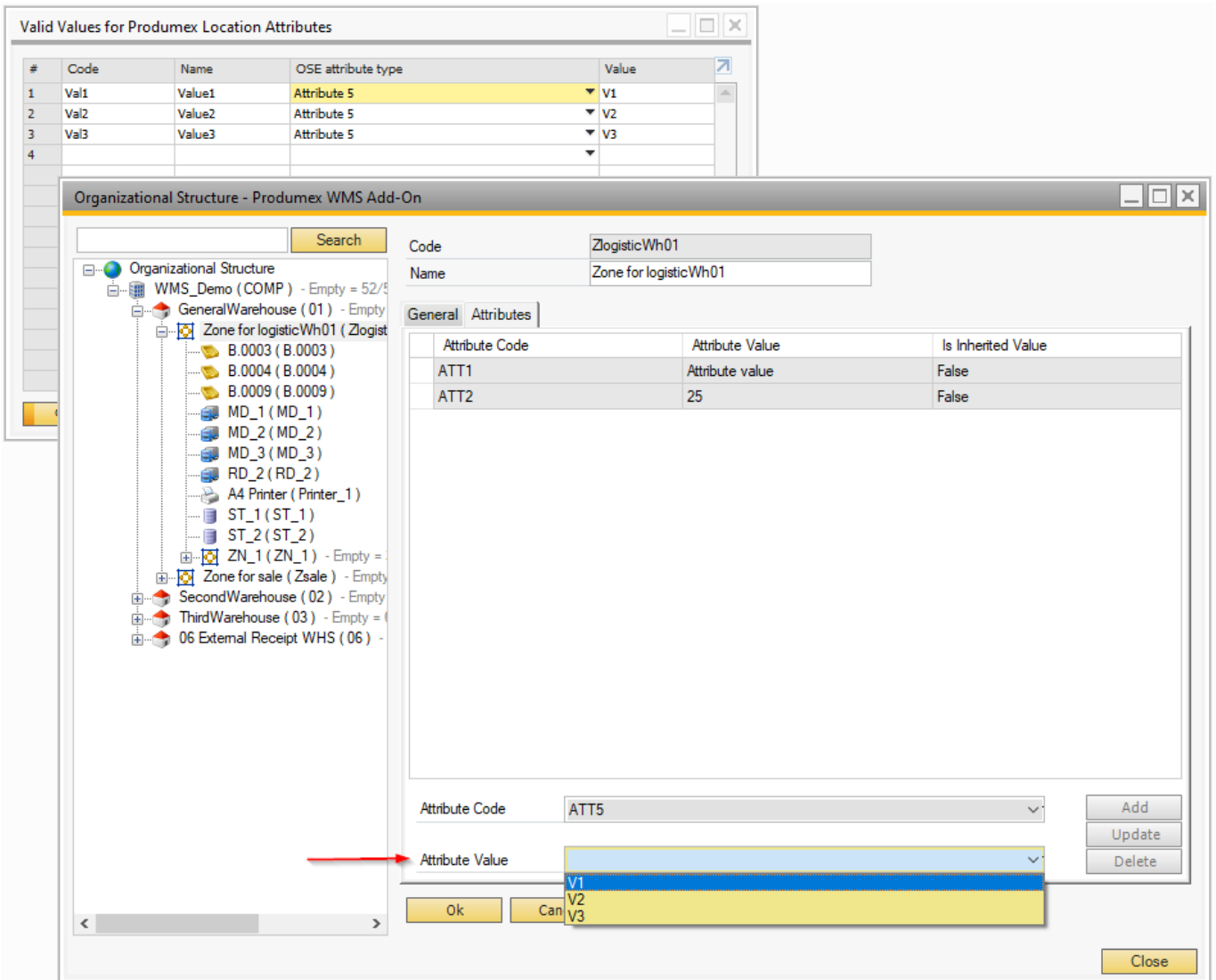
With the default form you can define the valid values for those location attributes that have *List* convertor type on the Produmex Location Attribute Types (PMX_OSAT) default form.



The defined valid values can be selected in the Organizational Structure > zone or bin location

element > Attributes tab > Attribute Value drop-down menu.

Note: In case of location attribute types with convertor String, Int, Double and Date, the values can be added manually in the Attributes Value field on the Attributes tab of the given location.



From: <https://wiki.produmex.name/> - **Produmex**

Permanent link: https://wiki.produmex.name/doku.php?id=implementation:wms:confguide_main:usertables:osat_oavv

Last update: 2021/04/05 20:54

