

Checks Flow

Overview

With the Checks Flow it is possible to see inventory information on the Mobile Client. With the flow you can check the stock on a location, on an SSCC and you can also check the stock for an item.

Configuration

Item label printing - Print Item Label button:

1. Set the Item Label report on the [Reports](#) tab of the Organizational Structure.
- Report type: *ItemLabel (ITM_LBL)*

• Default report: DefaultItemLabel.rpt

Organizational Structure - Produmex WMS Add-On

Search

Organizational Structure

WMS_Demo (COMP) - Empty = 53%

Code

COMP

Name

WMS_Demo

General

Defaults

Extension Parameter

Production

SSCC

Reports

Print Events

Zone Types

Page Sizes

Report Path

C:\Produmex\Reports\

Coresuite Report Path

Key	Name	Path
1	Shipping Label	DefaultShippingLabel.rpt
2	Goods Receipt Label	DefaultGoodsReceiptLabel.rpt
3	Item Label	DefaultPickingItemCompleted.rpt
0	DefItemLabel	DefaultItemLabel.rpt

Format

Crystal Reports (2)

Name

DefItemLabel

Page Size

A4 (A4)

Orientation

Portrait (1)

Type

ItemLabel (ITM-LBL)

Path

DefaultItemLabel.rpt

Add

Update

Delete

Ok

Cancel

Export

Close

2. Set your report as the default item label report on the [Defaults](#) tab of the Organizational Structure.

Organizational Structure - Produmex WMS Add-On

Search

Code: COMP
Name: WMS_Demo

General Defaults Extension Parameter Production SSCC Reports Print Events Zone Types Page Sizes

Goods Receipt Label: Goods Receipt Label (2)
Shipping Label: Shipping Label (1)
Item Label: DefItemLabel (1002)
Additional Expenses Generator: AdditionalExpensesGenerator - Generates additional expenses (DE)
Default Quality Status Reception: Released (RELEASED)
Released Quality Status Reception: Released (RELEASED)
Quality Status Sales Return: Released (RELEASED)
Quality Status Cycle Counting: Released (RELEASED)
Quality Status Returnable Items: Released (RELEASED)

Ok Cancel Export Close

Logistic label printing - Print SSCC Label button:

1. Set the Logistic label report on the [Reports](#) tab of the Organizational Structure.
 - Default report: DefaultLogisticsLabel.rpt
2. Set the *700 - WHS: created LU* print event on the [Print Events](#) tab of the Organizational Structure.
 - Standard filter: GeneratedLUID - PRFLUIDG

Workflow

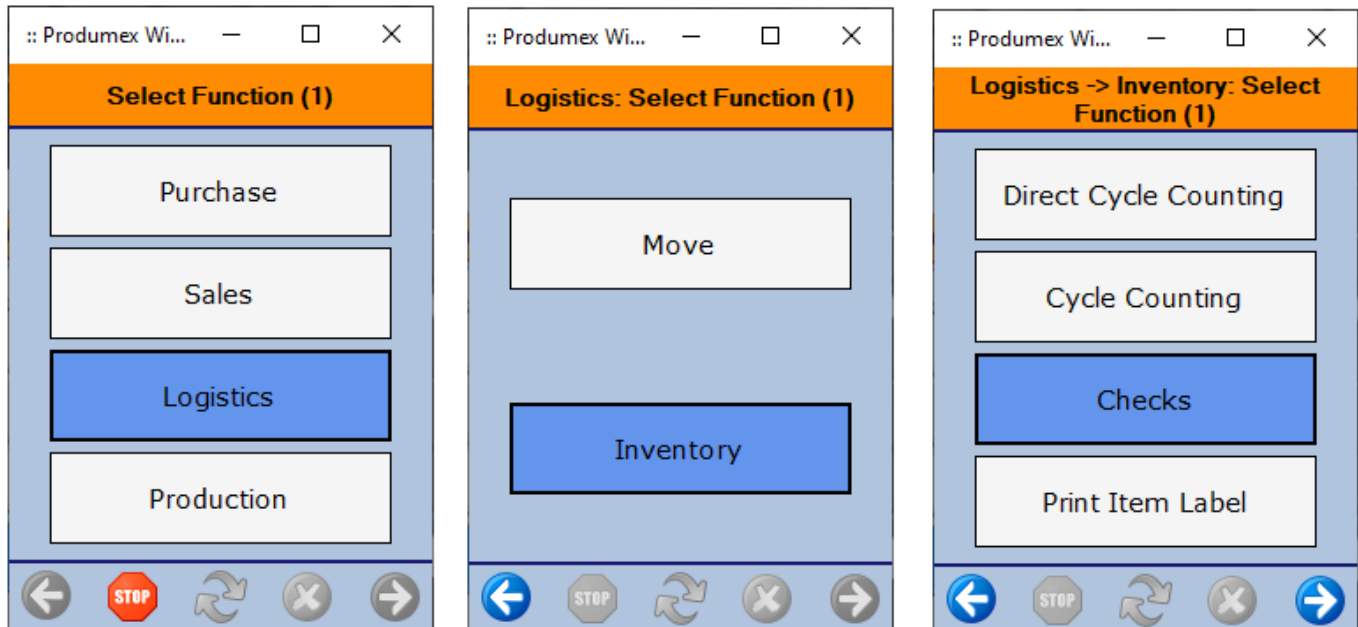


- [Start the flow](#)
- [Select a task](#)
- [Check location](#)
- [Check SSCC](#)
- [Check item](#)
- [Show all stock](#)
- [Filter stock](#)
- [Show global information](#)

Checks Flow steps

1. Start the flow

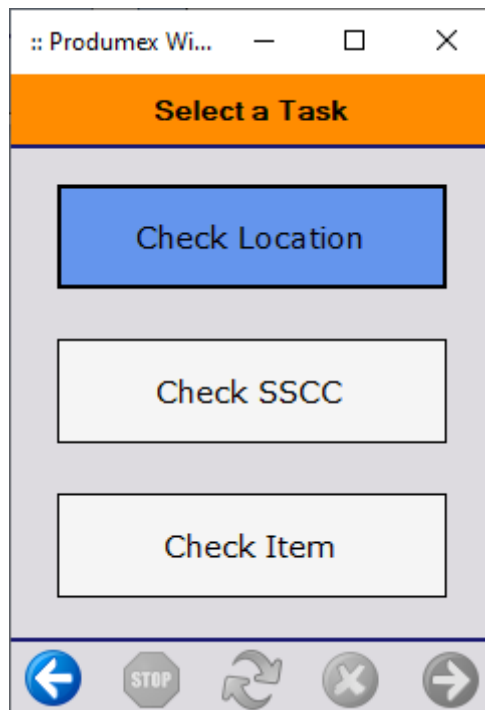
Start the flow on the Mobile Client: Logistics > Inventory > Checks.



2. Select a task

Select one of the following tasks:

1. Tap the Check Location button to see the stock on a location.
2. Tap the Check SSCC button to see the stock on a SSCC.
3. Tap the Check Item button to see the stock for an item.



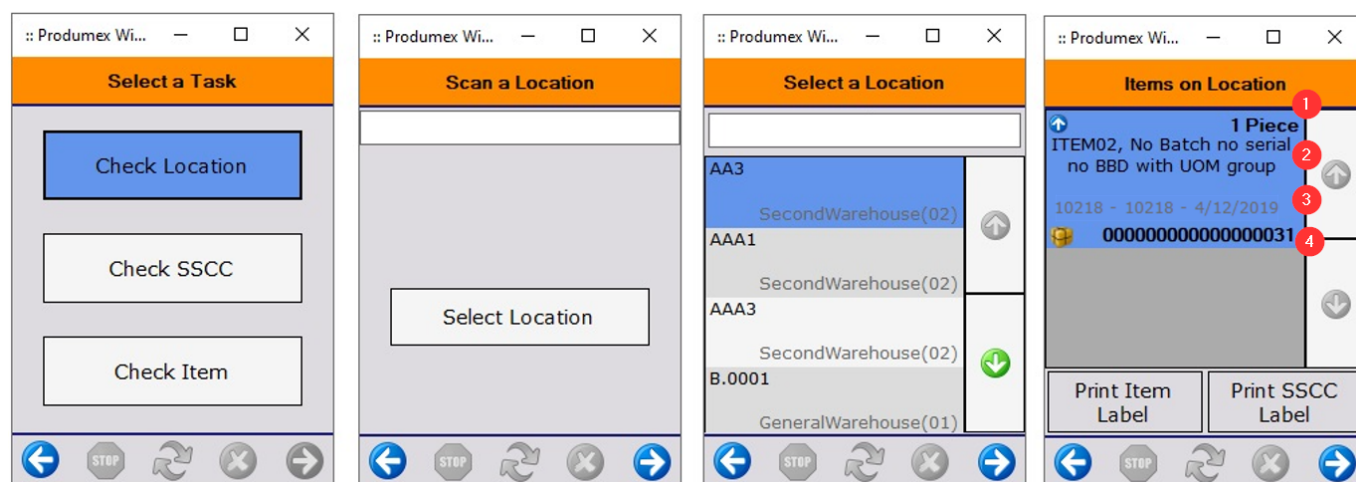
3. Task: Check location

Scan or select a location. Every active location from the warehouse(s) assigned to the Mobile Client on the Organizational Structure can be scanned or selected.

Note: Logistic carriers are not included in the list.

On the Items on Location screen the system lists the current stock on the location with the following information:

1. Quantity on stock: If the item is a catch weight item, the quantity/weight on stock is displayed.
2. Item code, description
3. Batch number, second batch number, Best Before Date
4. SSCC number



Tap the left arrow button to go back to the Scan a Location screen.

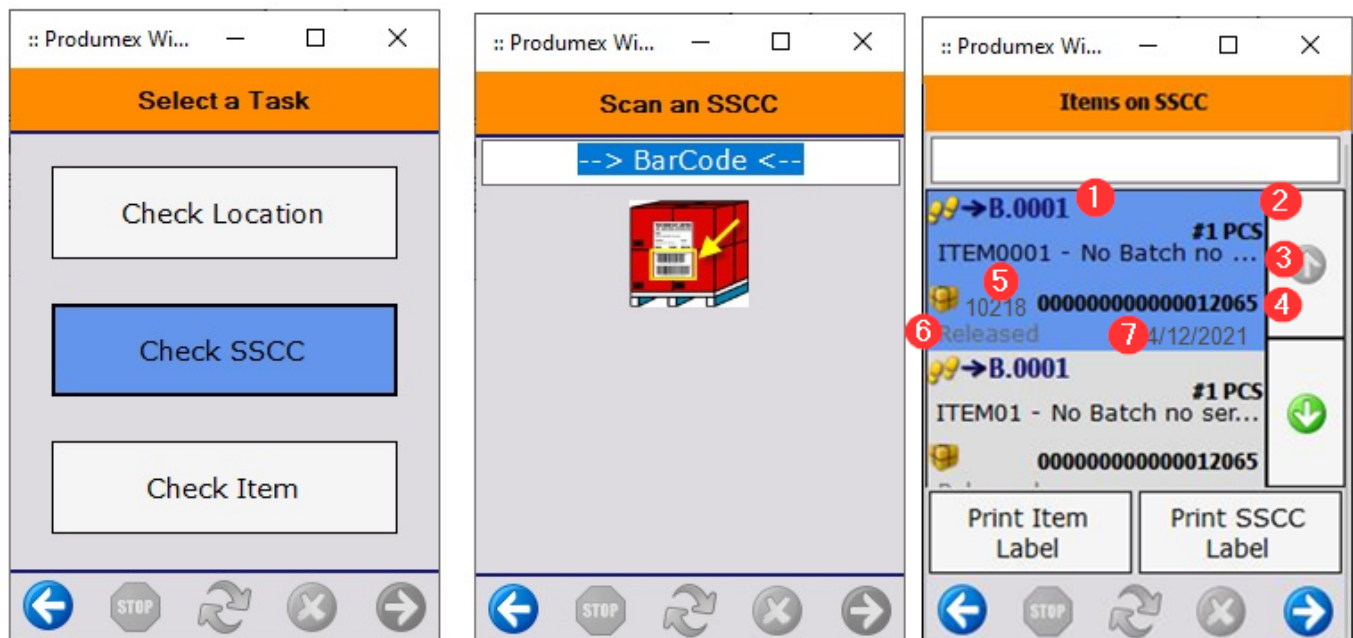
Tap the right arrow button to go back to the Select a Task screen.

4. Task: Check SSCC

1. To see the current stock on a given logistic unit, tap the Check SSCC button.
2. Scan the SSCC number.

On the Items on SSCC screen the system lists the current stock on the scanned SSCC with the following information:

1. Location code where the logistic unit is stored
2. Quantity on the logistic unit: If the item is a catch weight item, the quantity/weight on the logistic unit is displayed.
3. Item code - description - barcode
4. SSCC number
5. Batch number - second batch number
6. Quality status
7. Best Before Date



Tap the left arrow button to go back to the Scan an SSCC screen.

Tap the right arrow button to go back to the Select a Task screen.

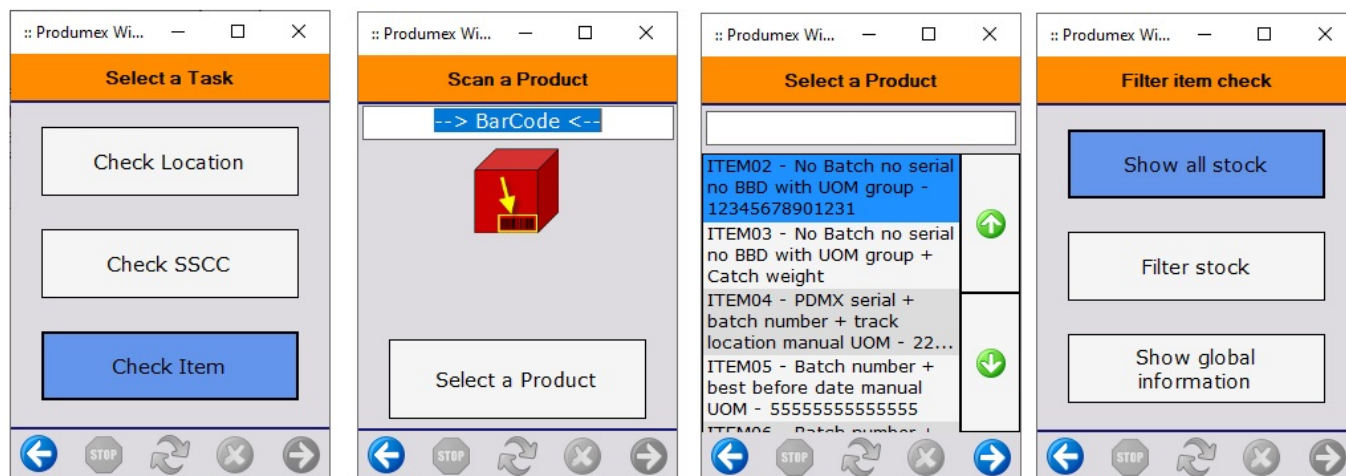
5. Task: Check item

1. Scan the product or tap the Select a Product button and select the product from the displayed list. Every inventory item can be scanned or selected.
2. Select a filter.

- **Show all stock:**

You can check the current stock of the item in every warehouse that is assigned to the [Mobile Client](#) on the Organizational Structure.

- **Filter stock:**
You can check the current stock for selected batch(es), best before date(s) or serial number only in the warehouses that are assigned to the **Mobile Client** on the Organizational Structure.
- **Show global information:**
You can check the general data about the current stock of the item in a selected warehouse.

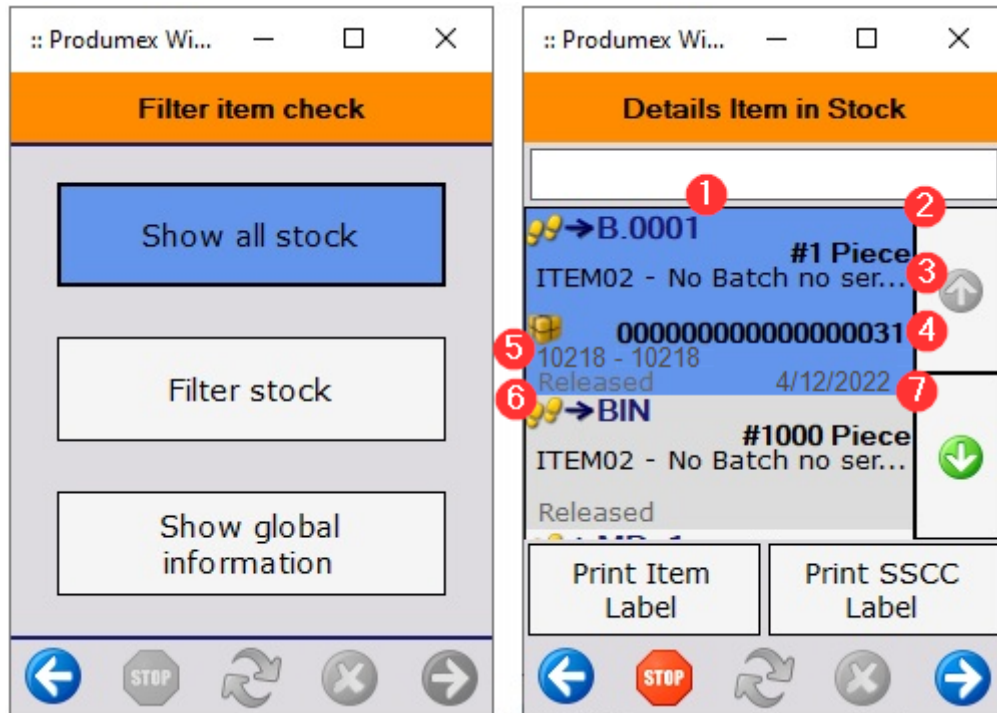


5.1. Show all stock

After tapping the Show all stock button, the system displays every location where the item is on stock.

Displayed information:

1. Location code
2. Quantity on stock
3. Item code - description - barcode
4. SSCC number
5. Batch number - Second batch number
6. Quality status
7. Best Before Date



Tap the Stop button to go back to the Inventory menu.

Tap the right arrow button to go back to the Scan a product screen.

Tap the left arrow button to go back to the Select a task screen.

5.2. Filter stock

1. After tapping the Filter stock scan a Gs1 label.

Note: Only scan GS1 labels that contain batch number, best before date and/or serial number.

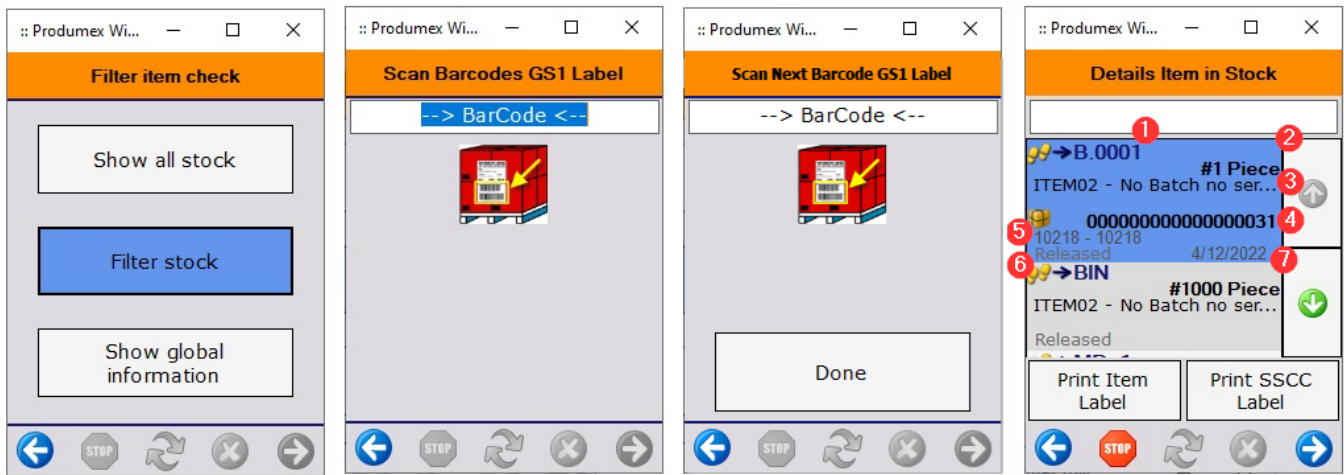
2. On the next screen scan the next GS1 label or tap the Done button to show the results.

The system displays a list of current stock of the item with the scanned batch(es), best before date(s) and/or serial number.

Displayed information:

1. Location code
2. Quantity on stock
3. Item code - description - barcode
4. SSCC number
5. Batch number - Second batch number
6. Quality status
7. Best Before Date

If there is no stock in the inventory with the scanned parameters, an error message is displayed.



Tap the Stop button to go back to the Inventory menu.

Tap the right arrow button to go back to the Scan a product screen.

Tap the left arrow button to go back to the Select a task screen.

5.3. Show global information

After tapping the Show global information button the system displays the general information about the stock.

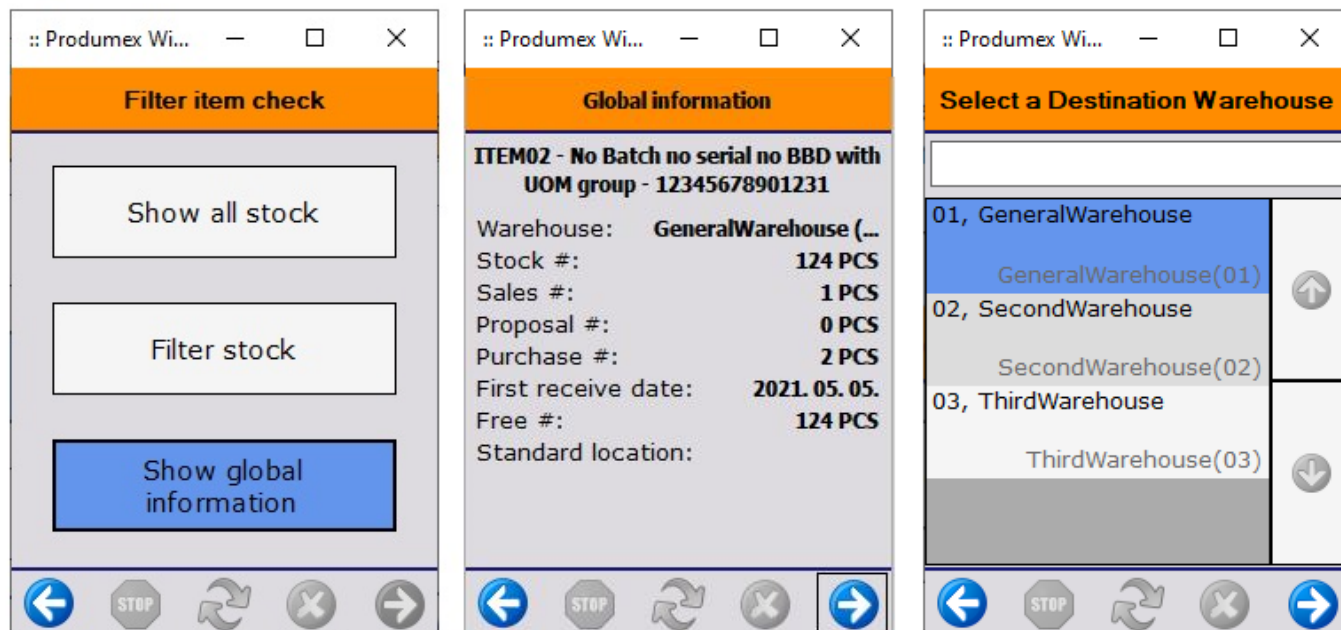
Displayed information:

1. Item code - description - barcode
2. Warehouse: Warehouse name (code)
3. Stock: Total stock in the warehouse (In stock quantity in the warehouse)
4. Sales: Quantity on open sales order lines
5. Proposal: Quantity on open pick list proposal lines
6. Purchase: Quantity on open purchase order lines
7. First receive date: The earliest ship to date from purchase orders with open lines
8. Free: Total quantity on stock that is not locked
9. Standard location: The standard location of the item in the warehouse

1. Tap the right arrow to see the global information for another warehouse.

2. On the next screen select the destination warehouse. Every warehouse that is assigned to the [Mobile Client](#) on the Organizational Structure is listed.

3. Select the destination warehouse and tap the right arrow button.



Tap the right arrow button to go back to the Scan a product screen.

From:

<https://wiki.produmex.name/> - **Produmex**

Permanent link:

<https://wiki.produmex.name/doku.php?id=implementation:wms:checks>

Last update: **2022/07/15 14:39**

