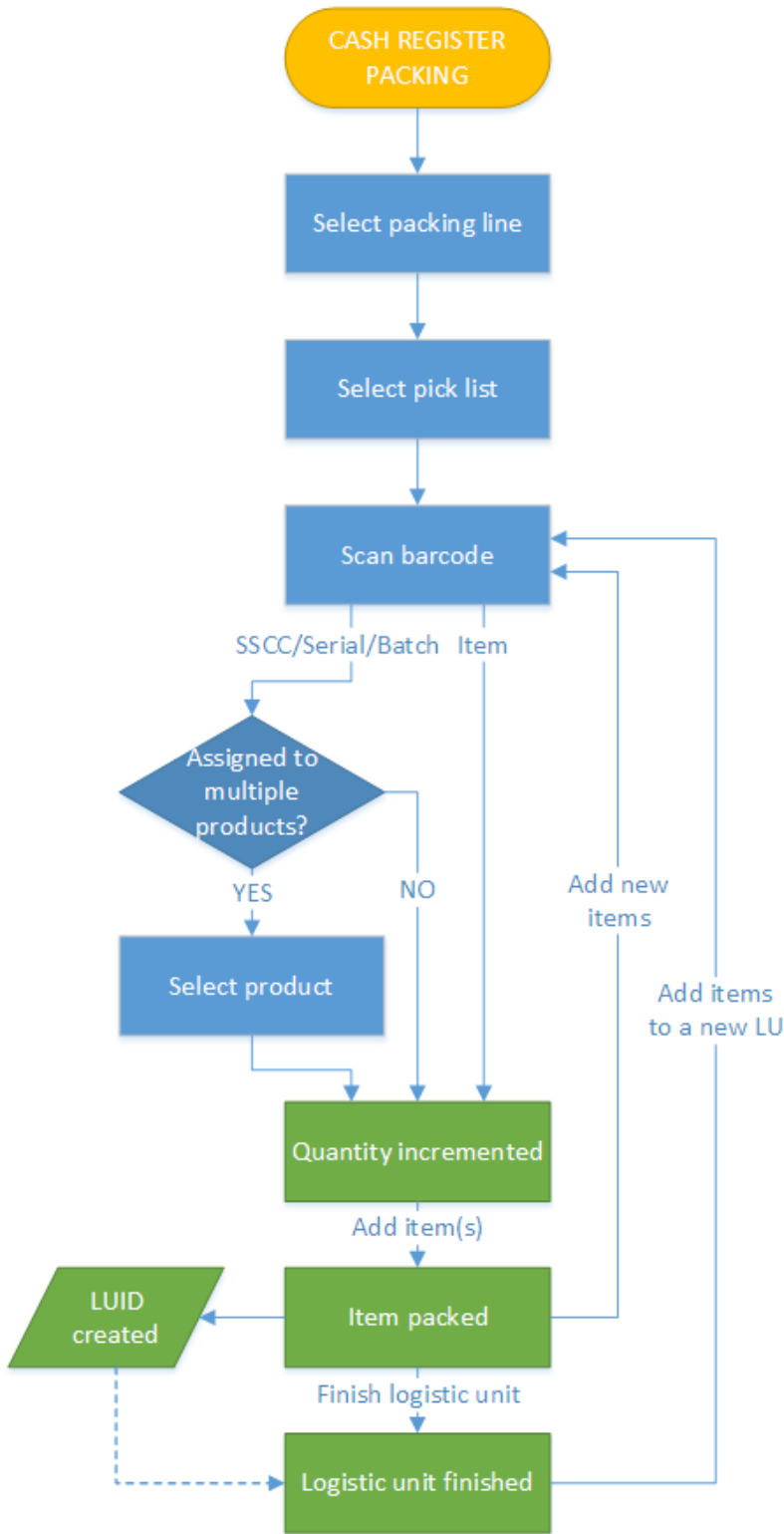


Cash Register Packing Flow

Overview

The Cash Register Packing flow uses a picklist as an input. In this flow users can perform picking and packing in one step, therefore the input picklist does not have to be picked.

Workflow

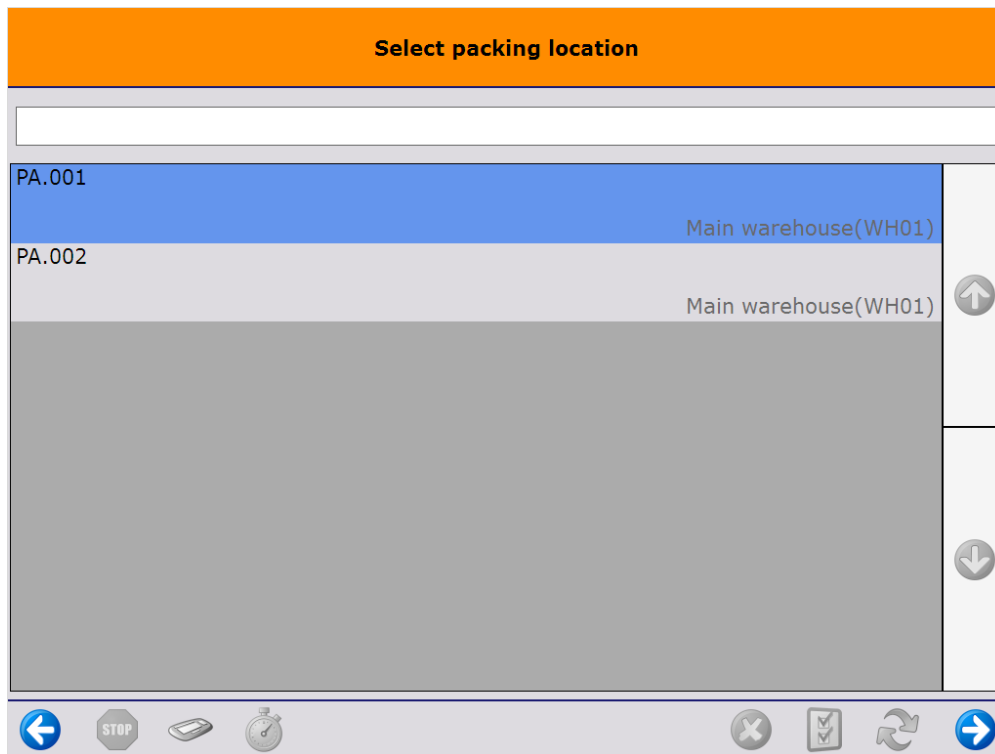


- Select packing line
- Select picklist
- Scan barcode
- add_items
- finish_logistic_unit

Cash Register Packing Flow steps

1. Select a packing location

Select a packing line from the list. Every active packing line from the warehouses assigned to the [thin client](#) are listed.

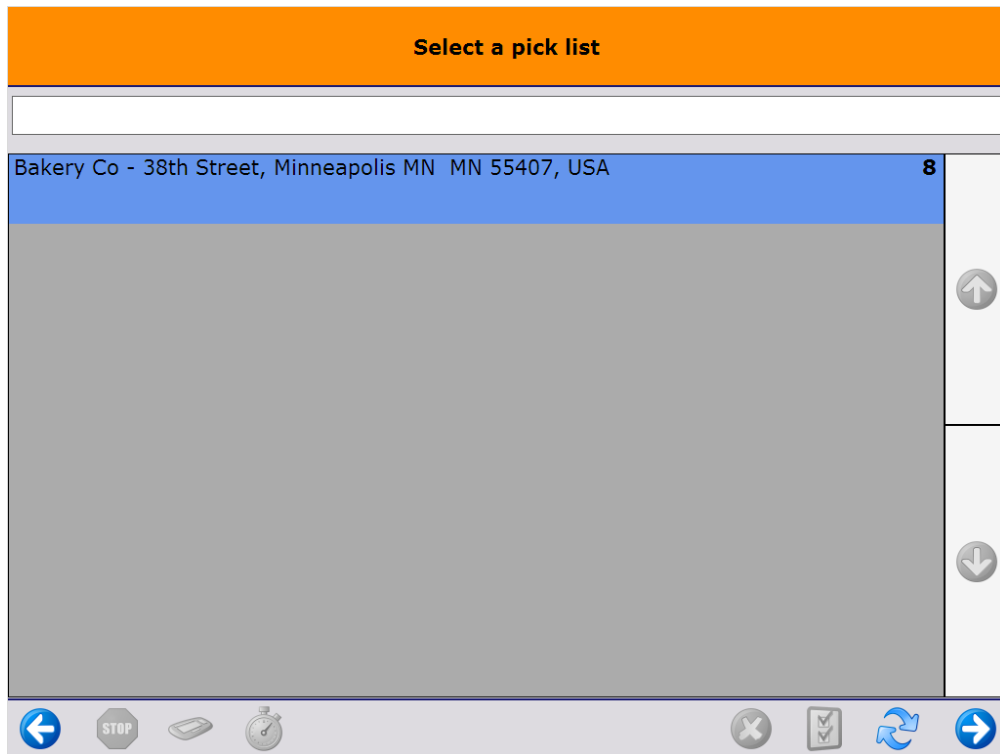


If there are already started logistic units on the packing line, the 'Select a logistic unit to pack on' screen is displayed. On this screen every packed logistic unit, which is not yet shipped, is listed. The customer name and address is displayed for each logistic unit. To continue packing onto a logistic unit, select the logistic unit and press the right key button. To start a new logistic unit, press the 'Start new logistic unit' button.

2. Select picklist

On the next screen select a picklist. Every picklist that meets the following conditions is displayed:

- The 'Use for Cash register packing?' option enabled for the [picklist type](#).
- The status is 'Not Ready', 'Partially Ready', 'Ready', 'Partially Picked', 'Picked' or 'Partially Packed'.
- The picklist is assigned to the warehouse of the selected packing line.



3. Scan barcode

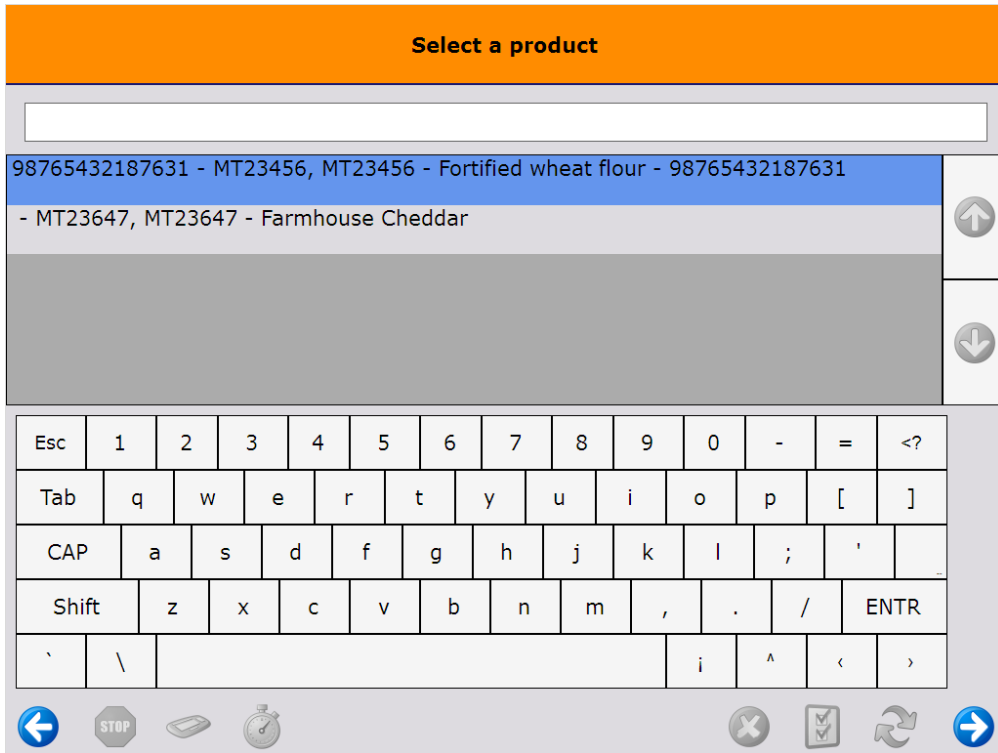
On the next screen the items to pack are listed.

- Product: The barcode, item code and description of the item to pack.
- Batch number, Best before date: The batch number, the second batch number and the best before date of the allocated stock. The stock to be packed is allocated from pick locations based on the stock details available on the picklist and based on the FEFO rule. Only stock details that are available on the sales order are enforced.
- Total: The open quantity on the picklist. Items with no open quantity are not listed.
- Quantity to pack: The quantity to pack. If the *'Force user to only scan items?'* option is enabled on the Packing controller, then the quantity to pack can only be added by scanning the barcode, otherwise the quantity can be adjusted with the + - buttons.



The following barcodes can be scanned on this screen:

- EAN number of the item.
- GS1 128 barcode. It is possible to pack stock with different details than the allocated stock, except if the stock detail was set on the sales order.
- Batch number. If the batch number belongs to multiple items, select the item to pack on the opening screen. (Batch with multiple BBD on stock?)
- Serial number. If the serial number belongs to multiple items, select the item to pack on the opening screen.
- SSCC number. In the case of a mixed pallet, select the item to pack on the opening screen.



Each scanned barcode increases the quantity by one if valid stock can be found. Over picking is not allowed.

4. Add items

If there is at least one item where the 'Quantity to pack' is not zero, the 'Add items' button becomes active. Press this button to pack the 'Quantity to pack' amount of the selected items.

If there is a stated logistic unit for the picklist, the system adds the packed items to that logistic unit. If there is no stated logistic unit for the picklist, then the system checks whether there are started logistic units for the customer. If there are, then the user can continue the packing onto one of those logistic units or create a new one. If there are no started logistic units for the customer, the system automatically creates a new one.

The started logistic unit is displayed on the top right corner of the screen.

When changing shipping type for Logistic unit has been enabled on the Packing Controller, a 'Shipping Type' drop-down menu is activated on this window. Select between different types of manual and auto shipping. The shipping type also appears on the LUID table in the 'Shipping Type' column.

Note: At this point, only the sub-variants of manual or auto shipping types can be selected (based on the specifics of the Sales Order header). If the shipping types differ on the lines, the request will be blocked.

Scan a Movable Location to Add Items

Elise Sellas
 Westbury Hill
 Bristol
 56-58
 UNITED KINGDOM

SSCC: **00000000000003254**⁶⁹
 Remarks:

Shipping Type: Auto Ship

Product	Batch Number Best Before Date	Total	Quantity to Pack
1234556789 - RF-W230 DIS_003, Photo frame	265017 10/10/2020	5 PCS	<div style="display: flex; align-items: center; justify-content: center;"> <div style="width: 20px; height: 10px; background-color: #90ee90; margin-right: 5px;"></div> 5 <div style="margin-left: 5px; color: #90ee90; font-size: 1.5em;">+</div> </div>

Enter Cart Manually

Add Items

Finish Logistic Unit

Select All

Skip all items

←
STOP
📄
🔄
→

If the item to add is managed by serial numbers and not all serial number were scanned, then the serial numbers has to be scanned before packing the item. On the next screen indicate whether you would like to scan the serial numbers one by one or you would like to scan the starting and ending serial number only. For more information about adding the quantity by scanning the serial numbers please see: [Screens for entering additional information](#)

5. Finish logistic unit

If there is at least one product packed onto the logistic unit, the 'Finish logistic unit' button becomes active.

If changing shipping type for logistic unit has been enabled, the shipping type for each added item can be changed here, too, before finishing the logistic unit. Note that only variants of auto or manual shipping type can be selected based on the Sales Order header of the added item.

Scan a Movable Location to Add Items

Elise Sellas 69
 Westbury Hill SSCC: **00000000000003254**
 Bristol Remarks:
 56-58
 UNITED KINGDOM

Shipping Type: Auto Ship

Product	Batch Number Best Before Date	Total	Quantity to Pack
1234556789 - RF-W230 DIS_003, Photo frame	265017 10/10/2020	5 PCS	5

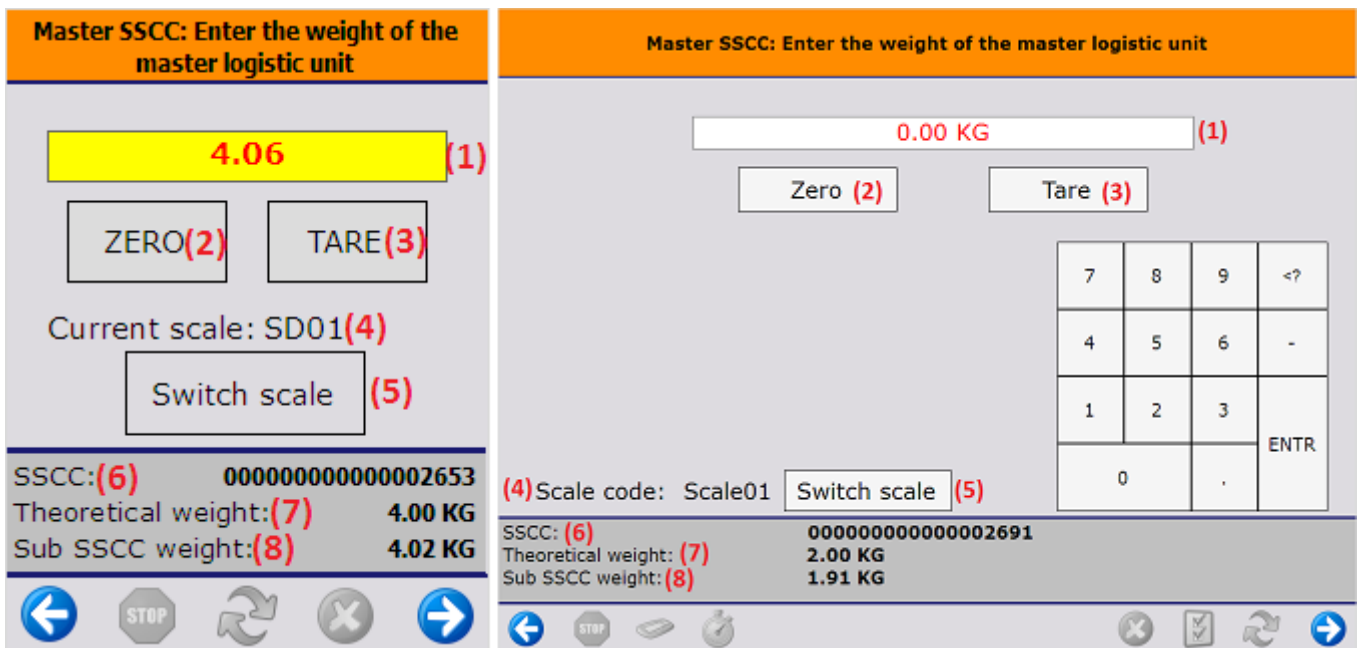
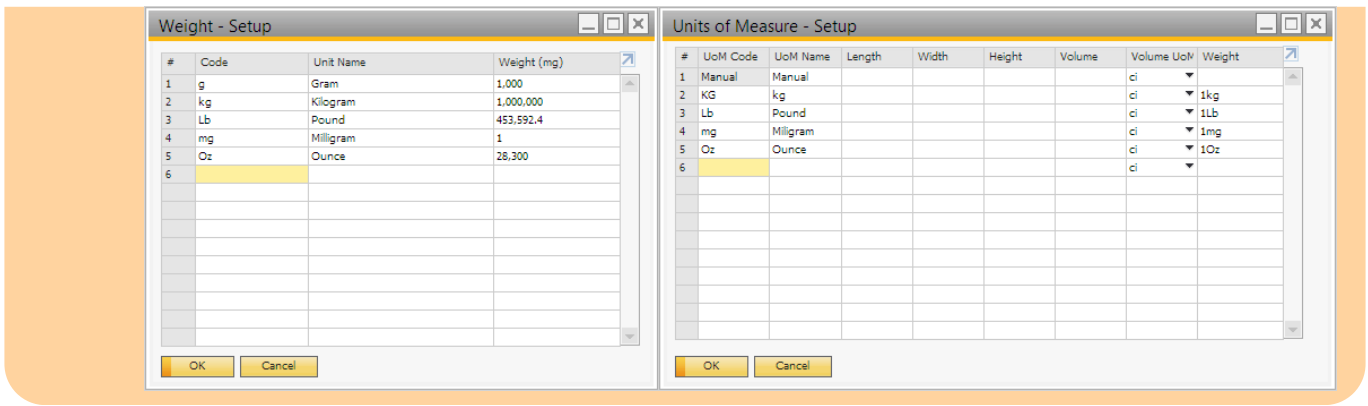
Enter Cart Manually
Add Items
Finish Logistic Unit
Select All
Skip all items

Press 'Finish logistic unit' button to finish the logistic unit.
 If configured, the *Packing: finished logistic unit event (500)* print event is triggered and the SSCC label is printed. After finishing a logistic unit, the system displays the shipping dock where the logistic unit has to be moved.

5.1. Capture weight

If the 'Ask weight?' or 'Ask weight Sub SSCC?' option is set to true on the [Produmex pick list types user table](#) for the pick list, and there is a [scale](#) defined under the shipping dock/packing line, the weight of the logistic unit can be measured on the connected scale after the logistic unit is finished.

Make sure that conversions between the units of measurements are set up correctly on the Units of Measure - Setup (OUOM) and Weight - Setup (OWGT) SBO standard tables.



1. The measured weight. The UoM is the UoM defined for the scale. The number of decimals displayed depends on the scale accuracy.
This field is automatically filled with the weight measured on the connected scale. It is possible to manually overwrite the measured weight.
If the weight is manually added or the connection to the scale is lost, the value starts flickering in red.
2. If the [scale](#) has a defined zero command, the 'Zero' button is displayed.
3. If the [scale](#) has a defined tare command, the 'Tare' button is displayed.
4. The code of the connected scale.
5. If there are more than one scales defined under the dock/packing line, an additional Switch scale button is displayed on the screen. Tap this button to change the scale.
On the next screen select the scale from the list. Every scale defined under the dock/packing line is listed. After switching the scale, the screen will use the chosen scale. After proceeding with the flow, and a new weight needs to be captured, the standard logic to choose a scale is used. This means that switching scale only switches the scale for the current weighing.
6. SSCC number of the logistic unit.
7. *Theoretical weight*: The *theoretical weight* is the sum of the weight of the items on the logistic unit. The item weight can be defined on the Sales tab of the Item Master Data.

8. In the case of master SSCC's, an additional *Sub SSCC's weight* value is shown. The value is calculated as the sum of the measured weight of the Sub SSCC's.

6. Skip items

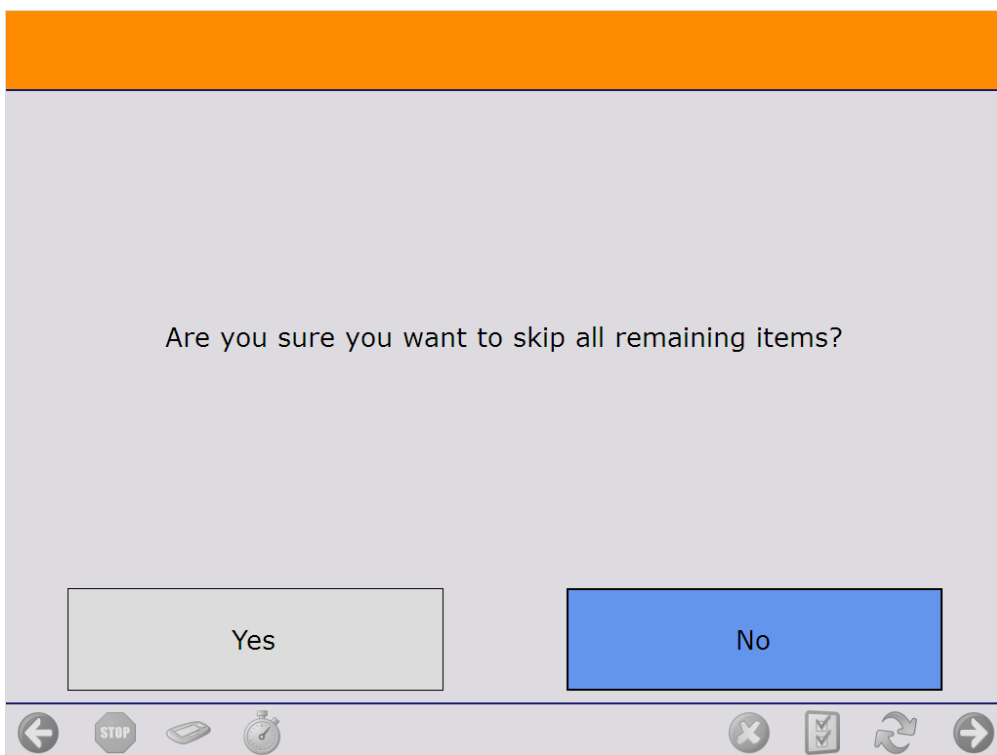
It is possible that there are goods that cannot be packed. Produmex WMS offers two possibilities to skip these goods:

- Operators can skip remaining stock on the *Main Packing* screen for every item type
- Operators can skip serial numbers on the *Scan a Serial Number* screen for items managed by serial numbers

8.1. Skip items on the Main Screen

Continue the packing until only products that cannot be packed are listed on the screen. On the main Packing screen tap the *Skip all items* button to skip every remaining item.

On the next screen confirm that you would like to skip the remaining items.



The system proceeds to the *Select a reason* screen. Select a reason from the list. Every **reason** that can be used for picking is listed.



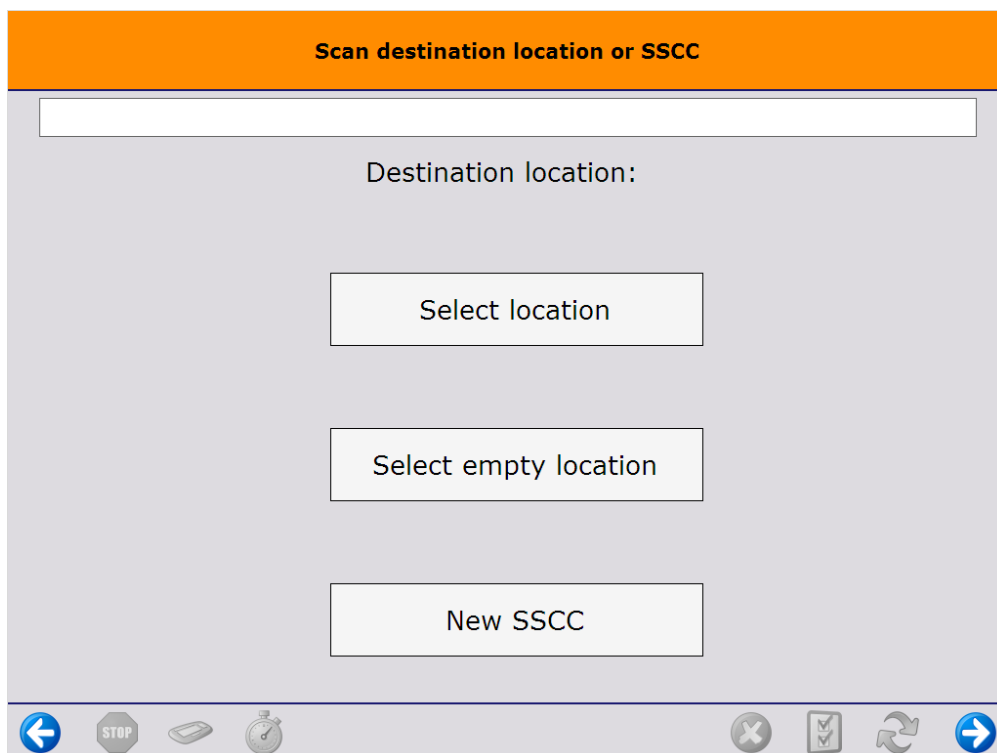
On the next screen define where the skipped items should be moved.

- To move the items onto an SSCC, scan the SSCC. If the scanned SSCC is not in stock, identify

the destination location as described below.

- To create a new SSCC, tap the **New SSCC** button then identify the destination location as described below. If configured, the *700 - WHS: created LU* print event is triggered and the logistic label is printed.
- Scan the destination location or select it from a list.
 - Tap the **Select location** button to list every active location from the warehouse.
 - Tap the **Select empty location** button to list every empty active location from the warehouse.

Please note: If no SSCC is created or selected, the items will be moved without a linked logistic unit.



After the destination location is defined, the system removes the locking from the skipped products and updates the pick list.

- If the total quantity on the pick list line is skipped, the system adds the selected reason to the pick list line and closes it.
- If the pick list line is partially skipped, the 'Open' and 'Picked' quantity of the pick list line is updated with the packed quantity. A closed line will be added with the quantity and the details of the skipped product and the selected reason.

After the lockings are removed, the skipped products are moved onto the selected logistic unit or destination location. Then the system returns to the *Select moveable location* screen where the user can continue the packing.

8.2. Skip serial numbers

It is possible to skip items that cannot be packed while scanning the serial numbers. Please note that

operators cannot skip serial numbers if they use the scan a serial number range feature.

Start the scanning on the *Scan a Serial Number* screen.

- To skip a single serial number, tap the Skip(1) button. The number of items to pack(4) is lowered by one. The serial number scanning can be continued.
- To skip all remaining serial numbers, tap the Skip all(2) button. The serial number scanning is finished and only items with serial numbers scanned are packed.



Use the *8.1. Skip items on Main Screen* function to move the damaged goods from the Packing station.

From:

<https://wiki.produmex.name/> - **Produmex**

Permanent link:

https://wiki.produmex.name/doku.php?id=implementation:wms:cashregister_packing

Last update: **2026/03/12 08:17**

