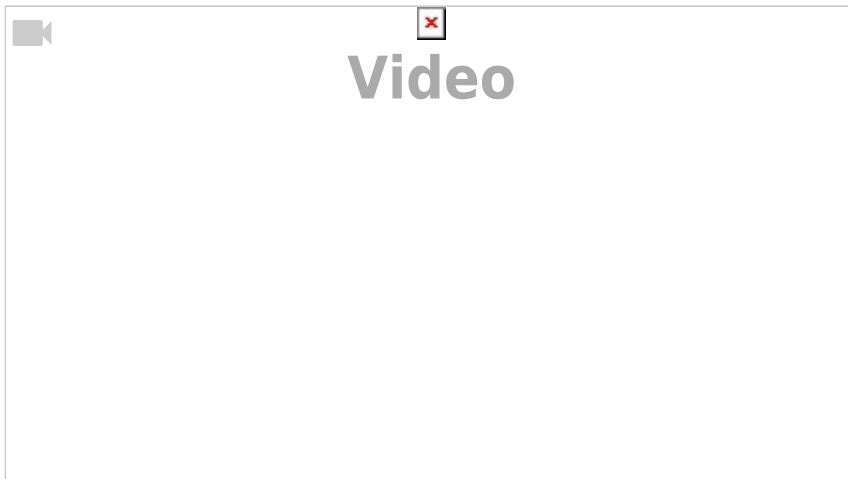


Produmex Scan for Android

Overview

From product version 19.3, Produmex Scan is available as an APK client. Produmex Scan for Android can be installed directly on an Android scanner and all features of previous Windows CE and RDP versions are available.



Prerequisites

1. A configured SAP Business One company
2. A working Produmex Scan environment (as the APK file is the client part only)
 - The minimum Produmex Scan version is 19.3.
 - Produmex Scan can be downloaded from [here](#) and the normal installation and configuration procedures must be followed (see [Installation Guide](#) and [Configuration Guide](#)).

Note: If you already have an environment with a Produmex Scan version lower than 19.3, you only need to perform a version upgrade, and add the APK file as an extra client.

3. An Android scanner or an Android smartphone version 6 or later

Note: Produmex Scan for Android is optimized for simple smartphones and it uses the camera for scanning. It is for demonstration purposes instead of actual operations as scanning by using a smartphone camera has limited functionality.

Installation and initial set-up

General settings

1. Download the ProdumexScan_ClientAndroid_[version].apk file to your device from [here](#).

2. Execute the APK file on your device.

Note: Depending on the device, it may be necessary to allow untrusted sources.

3. Enter the server URL (i.e. the URL where the Service Broker is running) in the *Server URL* field of the *General* tab.

4. Select a company.

5. Select a language.



Advanced settings

Go to the *Advanced* tab and set up the configurations.

1-2. Use camera for barcode and **Do not show keyboard** settings:

- In case of using an industrial scanner with a keyboard:
 - Leave the *Use camera for barcode* setting disabled.
 - Enable the *Do not show keyboard* setting.
- In case of using an industrial scanner without a keyboard:
 - Leave the *Use camera for barcode* setting disabled.
 - Leave the *Do not show keyboard* setting disabled.
- In case of using an Android smartphone:
 - Enable the *Use camera for barcode* setting.
 - Leave the *Do not show keyboard* setting disabled.
 - For more information see section
- [5. Scanning Barcodes with Camera.](#)

3. Allow text field focusing

With the cursor focusing option, you can define the text field on which the cursor is focused and the keyboard is also automatically displayed so that you can immediately start writing.

Note: Focusing works in the Screen_Activate event.

1. Enable the Allow text field focusing option in the Advanced settings.

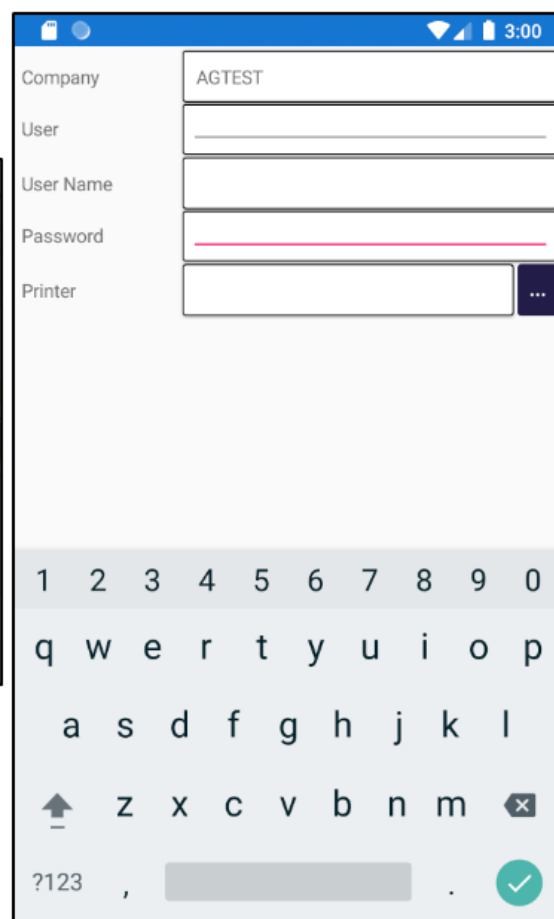
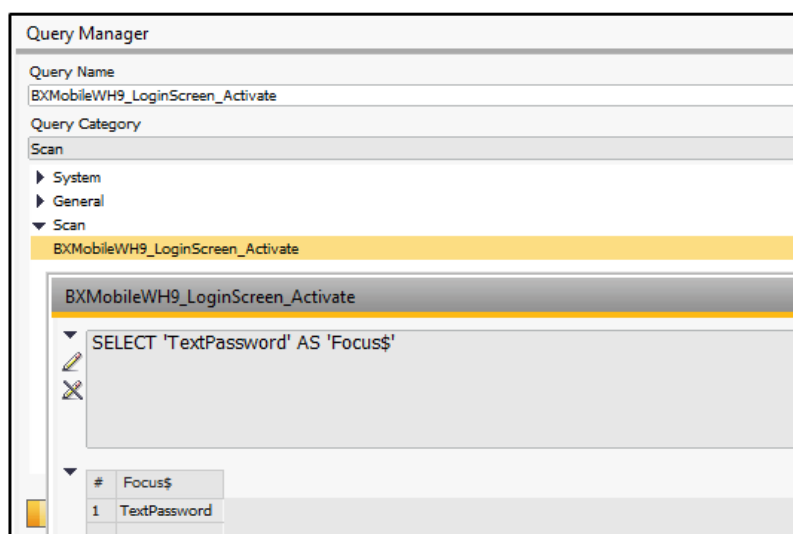


2. Write a user query in the Query Manager:

- SQL command: SELECT
- Keyword: Focus\$

Example : The cursor is focused on the Password field of the Login screen.

- Query name: BXMobileWH9_LoginScreen_Activate
- User query: SELECT 'TextPassword' AS 'Focus\$'

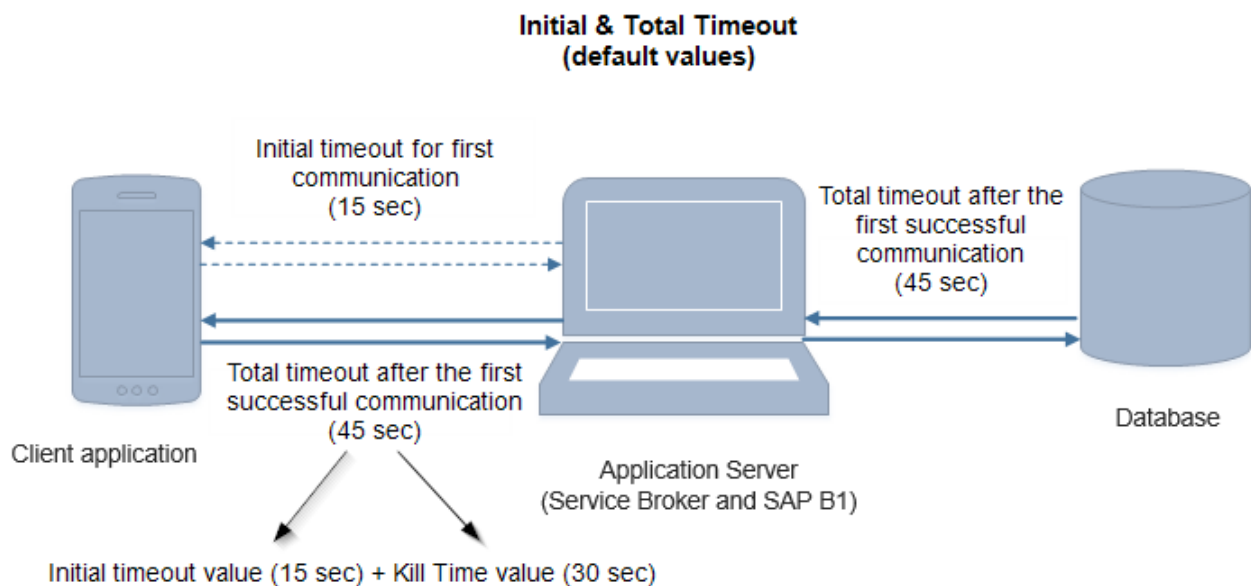


4. Smaller controls: If the setting is enabled, the size of controls is reduced and the Data Repeater list has more space on the screen.



5. (Initial) Connection Timeout (sec): An initial timeout setting for the Client application with a default value of 15 seconds.

- First the Client application requests its configuration (including the Kill Time value - 30 seconds by default) from the application server and it uses the Connection Timeout setting. If the application server does not respond within the time limit defined by the Connection Timeout setting, the Client application aborts the connection.
- If this first communication is successful, that is, the application server responds to the Client application within the time limit, a **total timeout value** is applied to define the timeout for future communication among the Client application, the application server and the database. The total timeout value is defined by the sum of the (Initial) Connection Timeout and the [Kill Time](#) with a default value of 45 seconds (15 sec + 30 sec).
- If your application or database server is slow, it is recommended to change the value of the (Initial) Connection Timeout to a higher number.



6. Play Sound

With the Play Sound setting you can define if you want Produmex Scan to play a sound whenever a barcode has been scanned successfully or a problem has occurred while scanning.

If you enable the Play Sound setting, you can also set the success and the fail sound in the drop-down menus. In case of the success sound, the *no sound* option is also available.

If the setting is enabled and Produmex Scan displays a message, it displays the following sound:

- error: fail sound
- warning: fail sound
- info: success sound

Note: If the setting is enabled, Produmex Scan also plays a success sound when you leave a field where a barcode has been scanned successfully, for example when you tap the Add or the Update button.

The path of the sounds files Produmex Scan displays in the drop-down menus can be defined with the Audio directory for scanning (Service Broker directory) setting, see documentation [here](#).

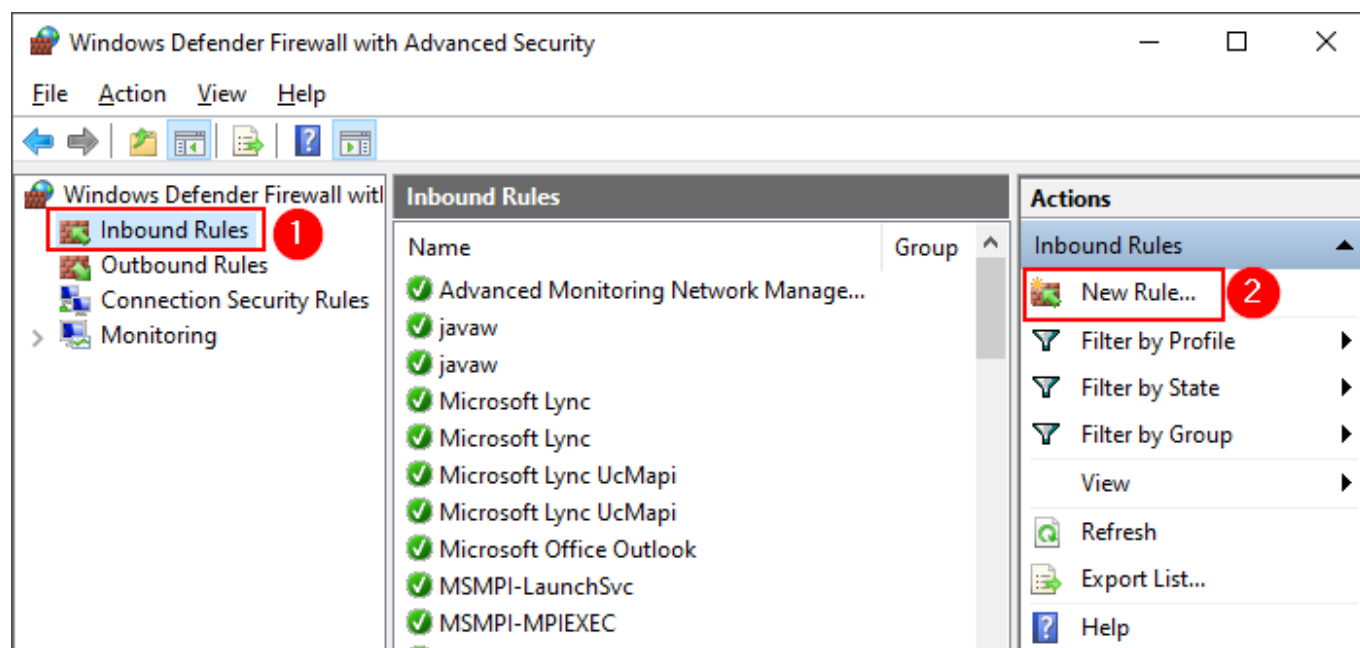
Configure the Windows Defender Firewall

This section describes the steps of configuring the Windows Defender Firewall.

Note: If you use a different firewall software, make sure that you consult with the manual of the given software and proceed accordingly.

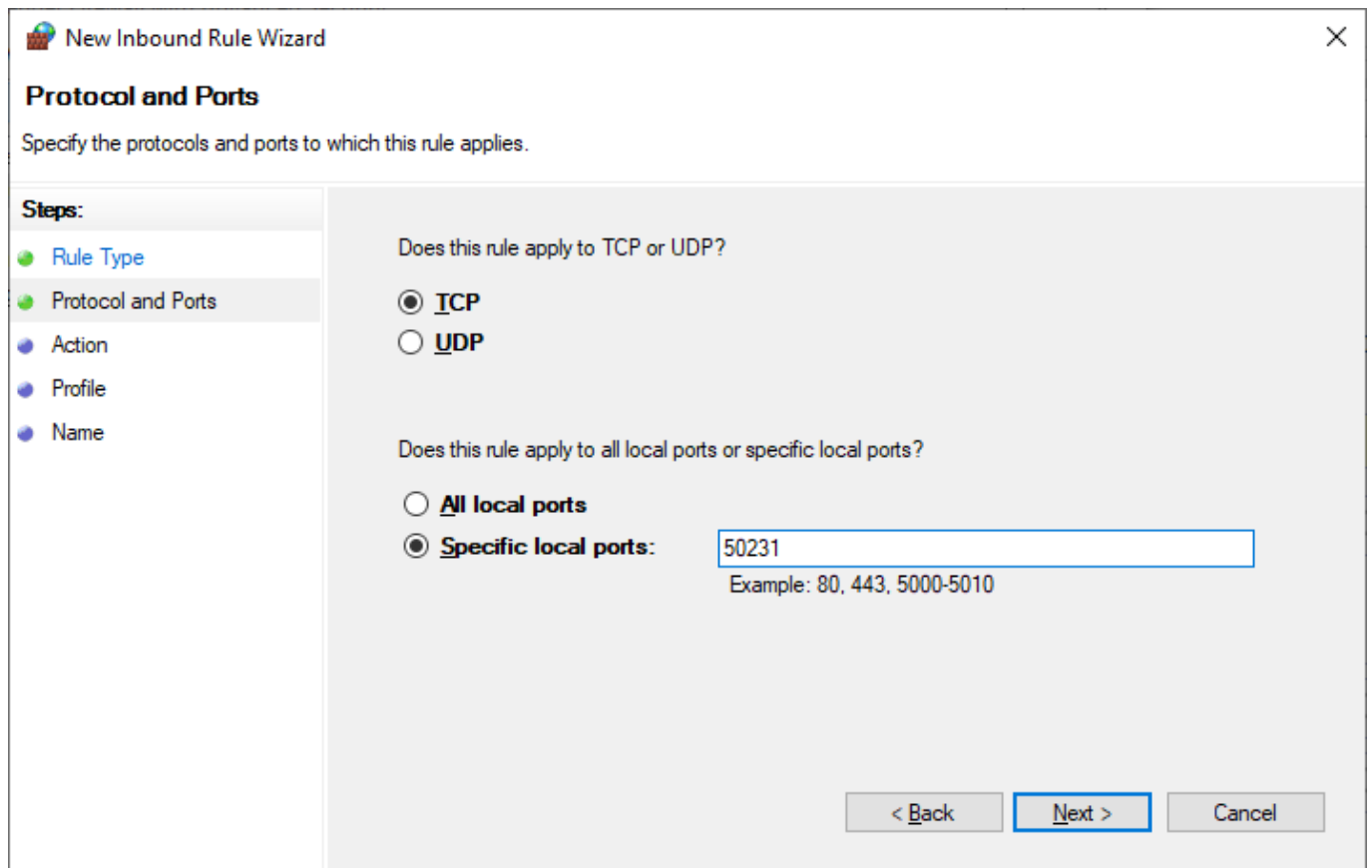
By default, Windows Defender Firewall does not allow smartphones to connect to PCs or laptops and it also prevents the Produmex Scan Android Client from connecting to the server. The following error message is displayed: *Information: Could not connect to server, please enter the correct URL*. Click OK and proceed as follows:

1. Open the Windows Defender Firewall on the Control Panel.
2. Select *Advanced settings*.
3. Select *Inbound Rules* and then select *New Rule*.



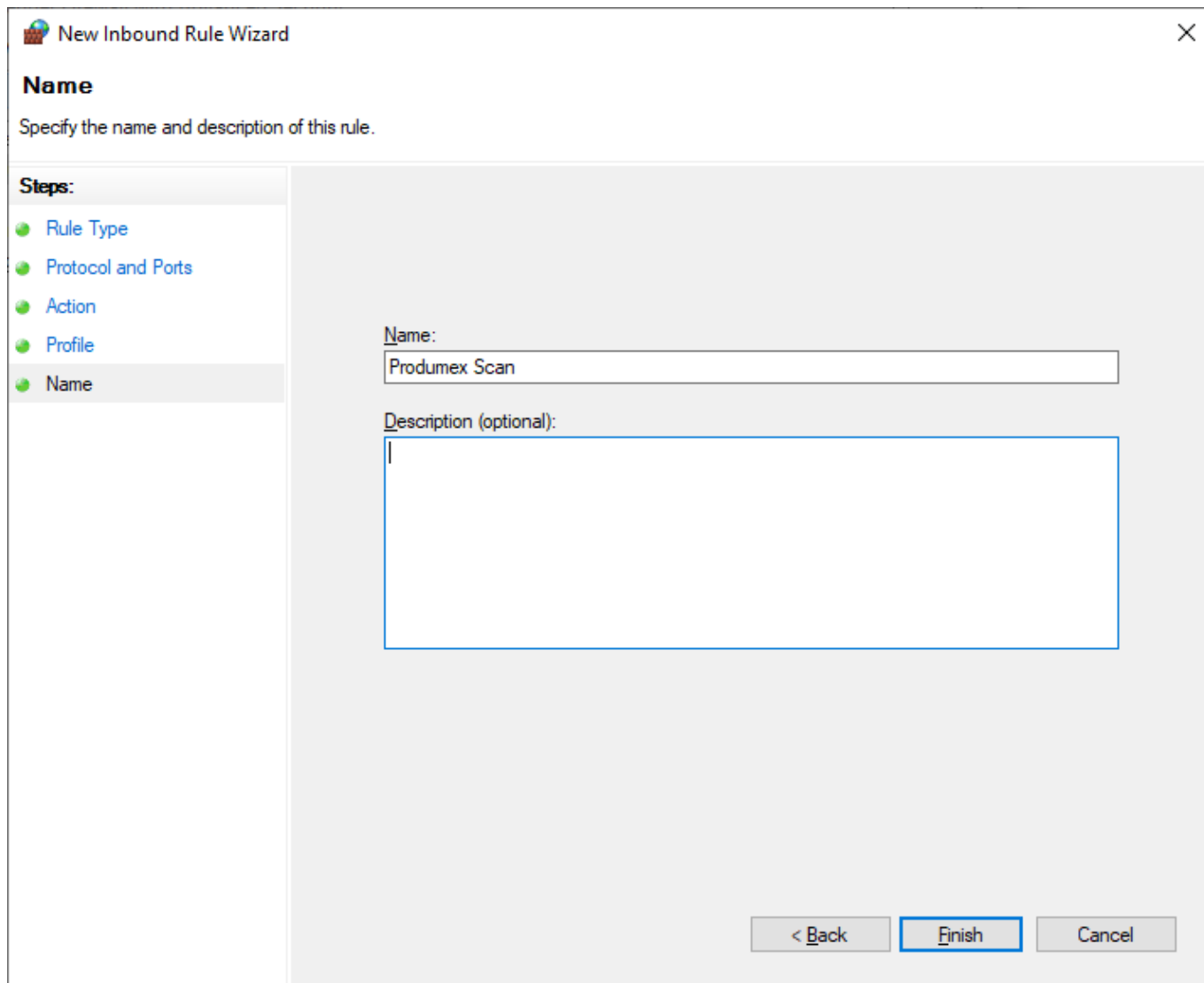
4. On the *New Inbound Rule Wizard* screen select *Port* and click *Next*.
5. Select *TCP* and write the Port number configured on the Produmex Server to the *Specific local ports* field. Click *Next*.

Note: The default value is 50231. If you configure the Produmex Scan Server on a different port, make sure that you provide the appropriate value.



The image shows a screenshot of the 'New Inbound Rule Wizard' window, specifically the 'Protocol and Ports' step. The window has a title bar with a close button (X) in the top right corner. Below the title bar, the text 'New Inbound Rule Wizard' is displayed. The main heading is 'Protocol and Ports', followed by the instruction 'Specify the protocols and ports to which this rule applies.' On the left side, there is a 'Steps:' panel with a list of steps: 'Rule Type', 'Protocol and Ports' (which is highlighted with a green dot and background), 'Action', 'Profile', and 'Name'. The main content area contains two questions. The first question is 'Does this rule apply to TCP or UDP?' with two radio button options: 'TCP' (selected) and 'UDP'. The second question is 'Does this rule apply to all local ports or specific local ports?' with two radio button options: 'All local ports' and 'Specific local ports' (selected). Below the 'Specific local ports' option, there is a text input field containing the value '50231'. Below the input field, there is a hint text: 'Example: 80, 443, 5000-5010'. At the bottom right of the window, there are three buttons: '< Back', 'Next >' (which is highlighted with a blue border), and 'Cancel'.

6. Select *Allow the connection* and click Next.
7. Select all the options (*Domain, Private, Public*) and click Next.
8. Provide a name in the *Name* field and click Finish.



New Inbound Rule Wizard

Name

Specify the name and description of this rule.

Steps:

- Rule Type
- Protocol and Ports
- Action
- Profile
- Name**

Name:
Produmex Scan

Description (optional):
|

< Back Finish Cancel

Customization

The same customization can be used for the Android version as for the Windows version and the same configurations apply to it. The following section describes some specificities.

Enable the *Customization assist mode* setting on the Advanced tab and the [general customization guidelines](#) apply to it. Exceptions:

- fields on external form
- data positioning



1. On External form: Extra button

If you select Yes in the *On External Form* column of the Customization Fields screen, the Extra button is displayed on the given screen and if you click the button, it opens the external screen with the fields and buttons positioned to the external screen:



2. Data positioning

In addition to the *x*, *w* and *lines* values, the possible values for data positioning include *row* and *fullrow* while the vertical position (*y*), the screen height (*h*) and the font size (*f*) are not applicable.

Value	Description
x	horizontal position (% of screen width from left)
w	width (% of screen width)
row	the row where the field is positioned to (see example below) as compared to its original position The sequence for the value starts with 1. If a field is customized, but no <i>row</i> value is defined, the field is automatically displayed as the last field on the screen.
fullrow	Its value is 1 (fullrow:1). By default, if no <i>x</i> or <i>w</i> value is defined, the given field is displayed in its full width. If you define the <i>x</i> or <i>w</i> value for a field and no other field should be positioned next to it, the <i>fullrow</i> value can be used (see example below).
lines	the number of extra lines to be added to the screen, only for DataRepeater In this case the <i>row</i> value is not applicable.
y, h, f	not applicable

#	Code	Name	Data Repeater	Field Name	Field Type	Module	Position Data	Screen	Visible
1	10	10		TextDocumentNumber	String	BXMobileWH9		GoodsReceiptPOScreen	Yes
2	12	12		TextSupplier	String	BXMobileWH9	x:10;w:50;y:10;row:2;fullrow:1	GoodsReceiptPOScreen	Yes
3	13	13		TextDueDate	String	BXMobileWH9	x:50;w:50;y:10;row:2	GoodsReceiptPOScreen	Yes

value y not applicable

adding row and fullrow values

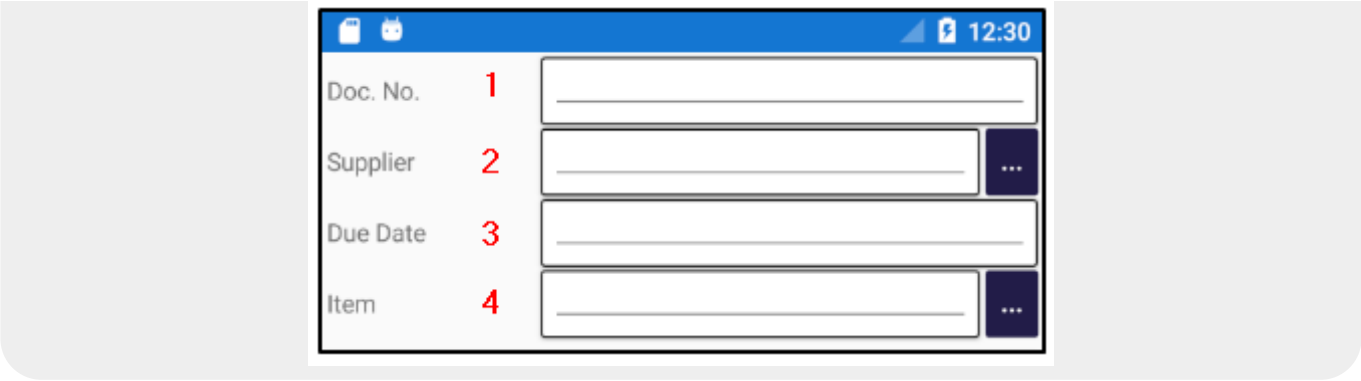
#	Code	Name	Data Repeater	Field Name	Field Type	Module	Position Data	Screen	Visible
1	10	10		TextDocumentNumber	String	BXMobileWH9		GoodsReceiptPOScreen	Yes
2	12	12		TextSupplier	String	BXMobileWH9	x:10;w:50;y:10;row:2;fullrow:1	GoodsReceiptPOScreen	Yes
3	13	13		TextDueDate	String	BXMobileWH9	x:50;w:50;y:10;row:2	GoodsReceiptPOScreen	Yes

no row value defined > the field will be displayed in the last row

If a field has buttons (for example the Quantity field has the Add and the Update buttons), there is no need to customize the buttons with the field. Once a field is customized, its buttons are automatically positioned accordingly.

Example 1: customizing the Goods Receipt PO screen

The screen without customization and its fields in their default rows:



Position data values for customization:

CustomizationFields									
#	Code	Name	Data Repeater	Field Name	Field Type	Module	Position Data	Screen	Visible
1	10	10		TextDocumentNumber	String	BXMobileWH9	row:6	GoodsReceiptPOScreen	Yes
2	12	12		TextSupplier	String	BXMobileWH9	x:10;w:50;y:10;row:2;fullrow:1	GoodsReceiptPOScreen	Yes
3	13	13		TextDueDate	String	BXMobileWH9	x:50;w:50;y:10;row:2	GoodsReceiptPOScreen	Yes

Document Number field: row:6

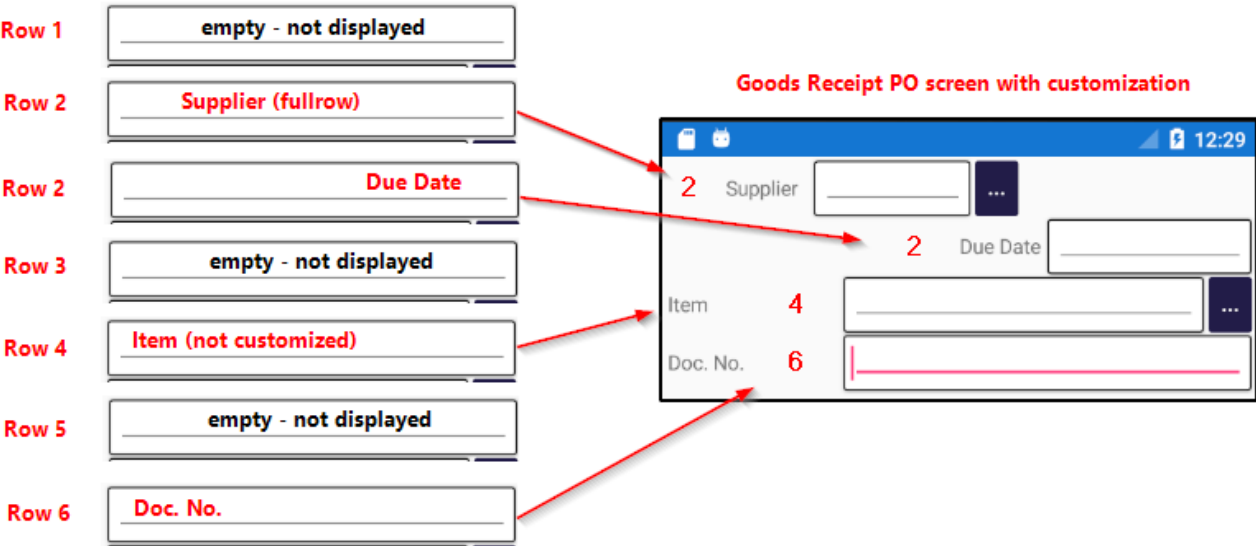
- The Document Number field is positioned to row 6.

Supplier field: row:2;fullrow:1

- The Supplier field is positioned to row 2 and it has the fullrow value, that is, no other field can be position next to it in row 2.

Due Date field: row:2

- The Due Date field is also positioned to row 2, but as no other field can be positioned next to the Supplier field, it is displayed in another row 2 field. In this case the order of the fields is defined by the field codes: as the Supplier field has code 12 and the Due Date field has code 13, the Due Date field is positioned under the Supplier field.



Empty rows are not displayed on the screen. In this example the empty rows are 1, 3, 5.

Message types

The following message types can be used in user queries:

I: Information

- A pop-up information message is prompted and it needs user confirmation (OK). The event is executed.

E: Error

- A pop up error message is prompted and it needs user confirmation (OK). The event is not executed.

YM: Yes/No with message box

- A pop up confirmation message is prompted that it can be answered with yes or no. The event is executed depending the user's choice.
- This message type can be used in case of button click events and validate events.

Logs

Navigate to the login screen and tap the gear icon to access the Logs tab. The tab is divided into two parts:

- On the top of the screen the system displays general errors, for example unsuccessful login. When you log out in the main menu, this log is sent to the Service Broker and cleared.
- On the second part of the screen unexpected events and their causes are displayed. With the Send logs button the logs can be sent to the Produmex Service Broker, which saves them among its own log files. The files can be sent to the Produmex Support Team.

With the Clear logs button you can clear logs on both parts of the screen.



Scanning barcodes with camera

With Produmex Scan on Android it is possible to use the camera of your device for scanning GS1-128 barcodes if the barcode does not have any group separators.

Prerequisites:

- Enable the *Use camera for barcode* setting on the Advanced tab.
- Delete the default values in the fields of the *Barcode scanner prefix* and *Barcode scanner suffix* settings on the Produmex Scan Scanning tab of the Produmex Scan Settings screen in SAP Business One.

Produmex Scan Settings

General SQL Logs Reports Produmex Scan General **Produmex Scan Scanning** Produmex Scan Picking Produmex Scan Strategies

Item code or item barcode must be scanned for Sales Order ☐

Item code or item barcode must be scanned during Picking ☐

Prefill quantities for Goods Receipt PO None ▾

Prefill quantities for Stock Transfer Request None ▾

Prefill quantities for Picking None ▾

Prefill quantities for Issue for Production None ▾

Prefill quantities for Receipt from Production None ▾

Prefill quantities for Return Components None ▾

Prefill unique batches (outgoing processes) ☐

Prefill unique batches for Stock Counting ☐

Post the corresponding quantity when scanning item barcode in quantity field ☐

Auto book unit when scanning normal item for Stock Counting ☐

Barcode scanner prefix

Barcode scanner suffix

GS1-128 barcode group separator \$


Code ID type None ▾


Allow selecting locations from Find Stocks screen (outgoing processes) ☐


Allow selecting batches from Find Stocks screen (outgoing processes) ☐


Optimized mixed serial/bin handling (Goods Receipt PO, Stock Transfer Request) ☐


Update Cancel

To use the function tap the  icon:

Prod. Order 

Product 

Due Date 

Warehouse 

Recommendations

On the Recommendations screens, you can see all the Stock Transfer Draft documents where the Transaction Type user-defined field is *Incoming*.

After selecting the appropriate document, on the next screen the < > signs indicate that the locations are the recommended ones configured in the draft document and the locations must be re-scanned during the process.

You can use the TAB or the arrow down key to navigate to the bin location fields.

Last
update:
2022/10/11 18:10 implementation:scan:install_guide:scan_android_apk https://wiki.produmex.name/doku.php?id=implementation:scan:install_guide:scan_android_apk

From:
<https://wiki.produmex.name/> - **Produmex**

Permanent link:
https://wiki.produmex.name/doku.php?id=implementation:scan:install_guide:scan_android_apk

Last update: **2022/10/11 18:10**

