

# 1. General guidelines

## 1.1. Submitting support requests

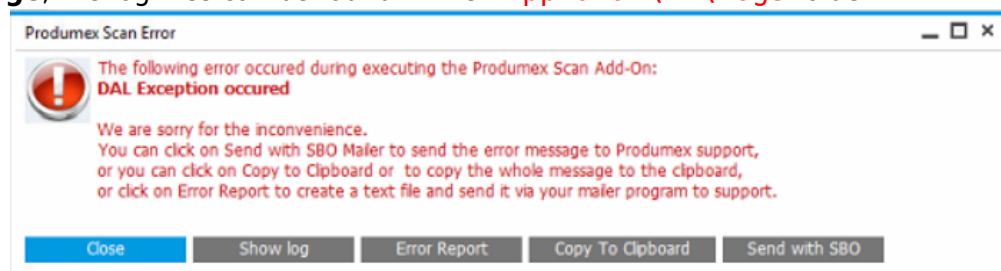
- All support requests should be emailed to support@boyum-it.com or you can use our webform in our Help Center (login required). Replies to your requests will be delivered back to you by email.
- Please note that all communication should be done in English.
- Please include customer's name and installation number for every ticket you open.

How to search for Help?

- To access the Help Center go to <https://support.boyum-it.com/hc/en-us>.
- In the Help Center, once you are logged in, you can view and manage all your tickets.

## 1.2. What to include when submitting a support call to Produmex?

- Customer's name
- SAP installation number
- The error message and a description of the problem
- Detailed steps to reproduce the problem
- A database where it can be reproduced in
- The Produmex log files
  - Produmex Service Broker: The log files can be found in the **C:\ProgramData\BX\BX Service Broker\Logs** folder
  - Produmex PDC Processor: The log files can be found in the **C:\ProgramData\BX\BX Service Broker\Logs** folder
  - Produmex Manufacturing add-on: **If you cannot open the log file from the error message**, the log files can be found in the **%AppData%\BX\Logs** folder



- SAP Business One version and PL version
- PMX version
- HANA Server or SQL Server version
- When did it happen first?
- How many clients have this problem? (only one or more?)
- Was there any upgrade recently?
- Was there any major change in the system recently?

## 1.3. Where to upload files when requested to do so?

There's an FTP server at your disposal, where you can upload files to Produmex. This way you can send large files (log files, database backups...) that don't fit in an e-mail.

The FTP access for upload is *write-only*, which means that you can upload any file, but you cannot download anything from that folder (not even the files **you** uploaded!). Only Produmex staff is able to retrieve uploaded files.

The credentials are the following:

- Host: <ftp.produmex.name>
- User name: upload
- Password: Avaya789

After having uploaded a file to the FTP server, please inform the Produmex staff that the upload has completed, including the file name and the support ticket reference, if any.

## 1.4. Error Messages on Terminals

- SBO Error Messages - Produmex scanners will display SBO error messages, so make sure to read the error message and determine if it is an SBO error or a Produmex error. If it's an SBO error message, please Google it and use your current process for solving SBO errors before reporting to Produmex.
- Produmex Error Messages - In most cases the Produmex error message will give you an indication of what the problem is to make it easier to solve like any other SBO error message.

## 1.5. Conflicts with other Addons

A common complaint goes as follows: "We're getting an error message from another addon but when we turn off Produmex the error message goes away, so it must be Produmex, right?"

In more cases than not it is the add-on that displays the error message that is the source of the problem.

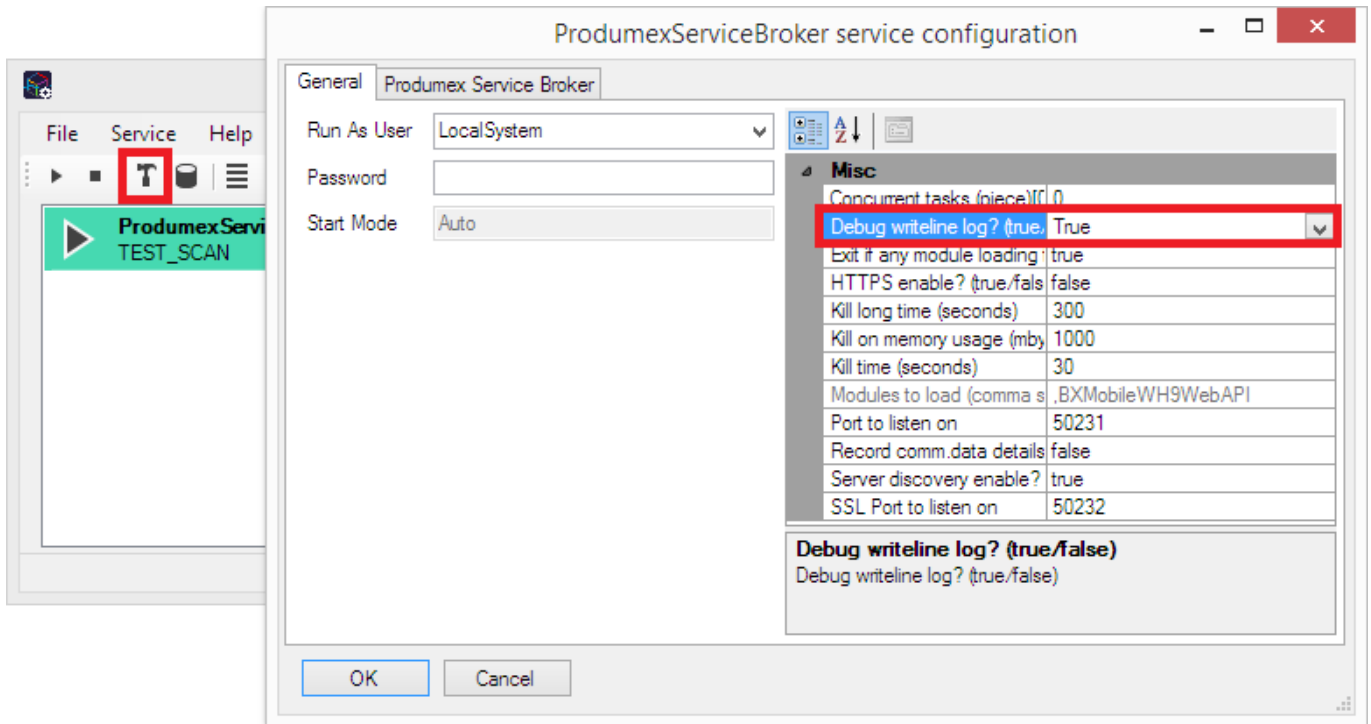
## 1.6. How to enable extra logging?

If you want to enable extra logging for debugging purposes, you can enable it in the following ways:

### 1.5.1. Produmex Service Broker

You can enable extra logging on the service configuration screen. Set the *Debug writeline log?* setting to 'True'. Restart Produmex Service Broker.

The log file is located: *C:\ProgramData\BX\BX Service Broker\Logs*



*It is recommended to disable this setting after the issue is discovered because it can create large log files.*

### 1.5.2. Produmex Manufacturing Add-On

You can enable extra logging on the [Logs tab](#) of Produmex Manufacturing Settings. Set the *Logging Level* to 'Debug (everything)'.

The log file is located: %AppData%\BX\Logs

From:  
<https://wiki.produmex.name/> - **Produmex**

Permanent link:  
<https://wiki.produmex.name/doku.php?id=implementation:manufacturing:supportguide:general>

Last update: **2018/11/26 17:46**

