

3.5. Produmex Service Manager

The Produmex Service Manager is a standalone program that can handle the Produmex Service Broker and other Produmex services. Service parameters, connection data to the database server, and the connection data to the company database/schema can also be modified on the Service Manager.

It is automatically installed by the Produmex Service Broker installer. The Service Broker will automatically appear in the Produmex Service Manager, together with all other installed Produmex services that are supported by the Service Manager.

3.5.1. Setup/Modify Connection data to the SAP company

Click on the 'Setup Companies' button. On the opening window you have to enter the connection data to your SAP company database/schema.

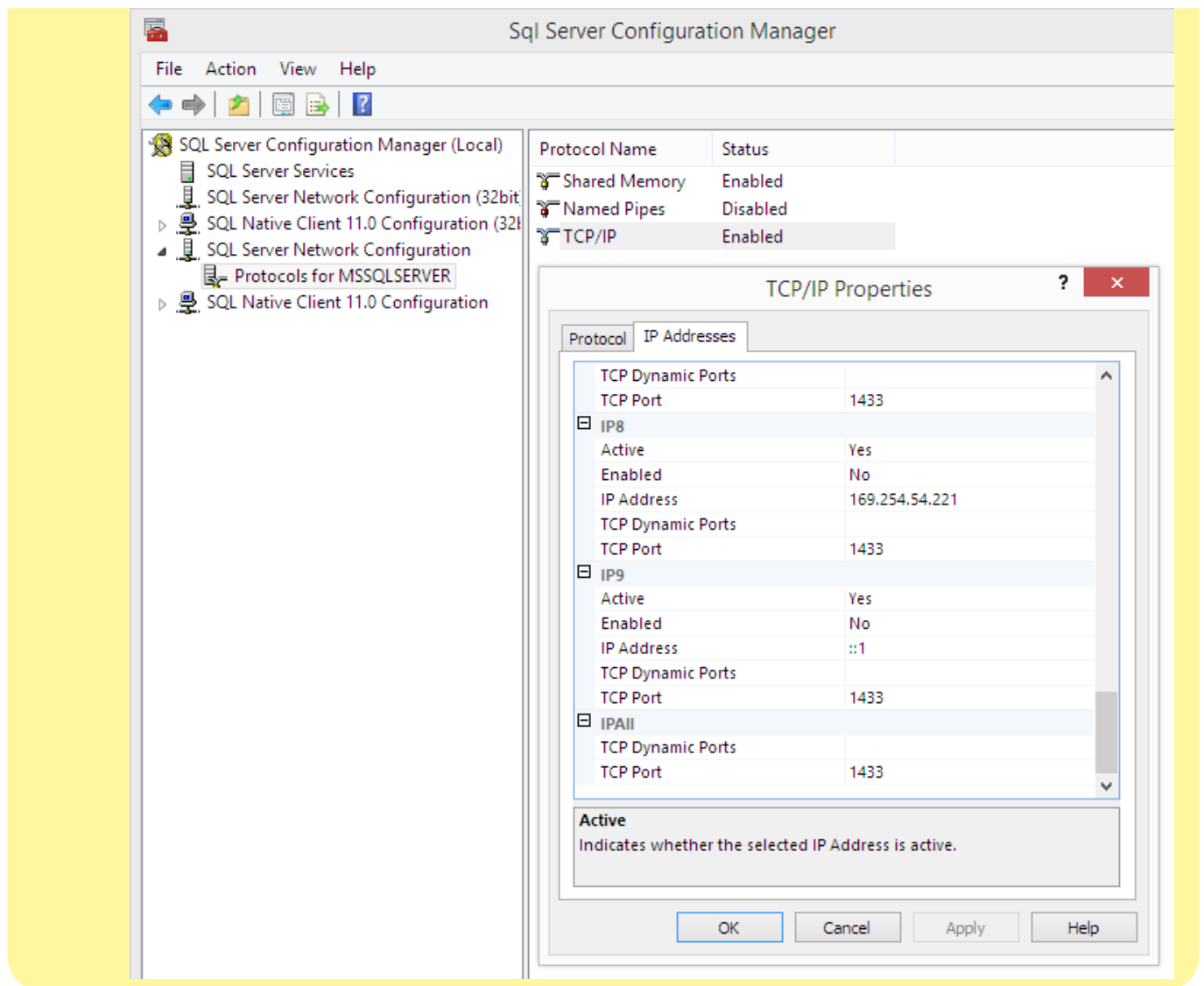
- **MSSQL**

At 'Server' enter the name or IP address of the server. At 'Port' you have to enter the port on which the application can connect to the database server. Usually it is 1433, however, if you have a named instance in the SQL server, then you have to check the actual port. Then choose MSSQL version number and enter the SQL Server user name and password.



How to check the port number on SQL

Open the SQL Server Configuration Manager. Select the SQL Server instance then right click TCP/IP on the right side and click on Properties. In the small window go to the bottom and check the port number.



Please note: in this example there are no instances, so the port is the default 1433.

• HANA

At 'Server' enter the name or IP address of the server. Please note: The database server name has to be added with the exact same format as it was added during the installation of the SAP Business One client.

At 'Port' you have to enter the port on which the application can connect to the database server. The default port is 30015.

Select HANADB from the dropdown menu and enter the user name and password.



When working on SAP B1 Cloud, add the domain user name and password as well.

At 'Language' it is possible to modify the language of the DI API transactions.

If you click on Test DB Connection, Service Manager will try to connect to the server with the given data. If the connection can be established, you will get a message: *Database connection test - success!*

3.5.2. Add new database

Click on the Setup Companies button.

On the opening 'Setup companies' screen check the connection data. If you would like to add a database from a different database server, modify the connection parameters then click on the 'Test DB Connection' button to test the connection. The modification of the connection parameters does not affect the connection settings of the already added databases.

Click on the '+' icon to add a new database/schema.



On the 'Database Setup' window select the database/schema from the dropdown menu.

Enter an SBO User and its password to create the connection to the database/schema. SAP employees are used for log in the mobile device. Transactions initiated by the employees will be posted by the SAP user defined for the Service Broker. The SBO user must have the authorizations to create stock related bookings in SAP Business One (Delivery, Goods Receipt PO, Stock Transfer, etc.) The SBO user also need at least an SAP Indirect Access license type as of SBO 9.2. PL08.

Click on the 'Save' button then close the window. You can close now Setup Companies and go back to the Service Manager main screen.

Now you have to assign your companies to the Produmex Service Broker and other Produmex services.

Click on the 'Companies...' button and select the company database/schema on the opening 'Select Companies' screen.

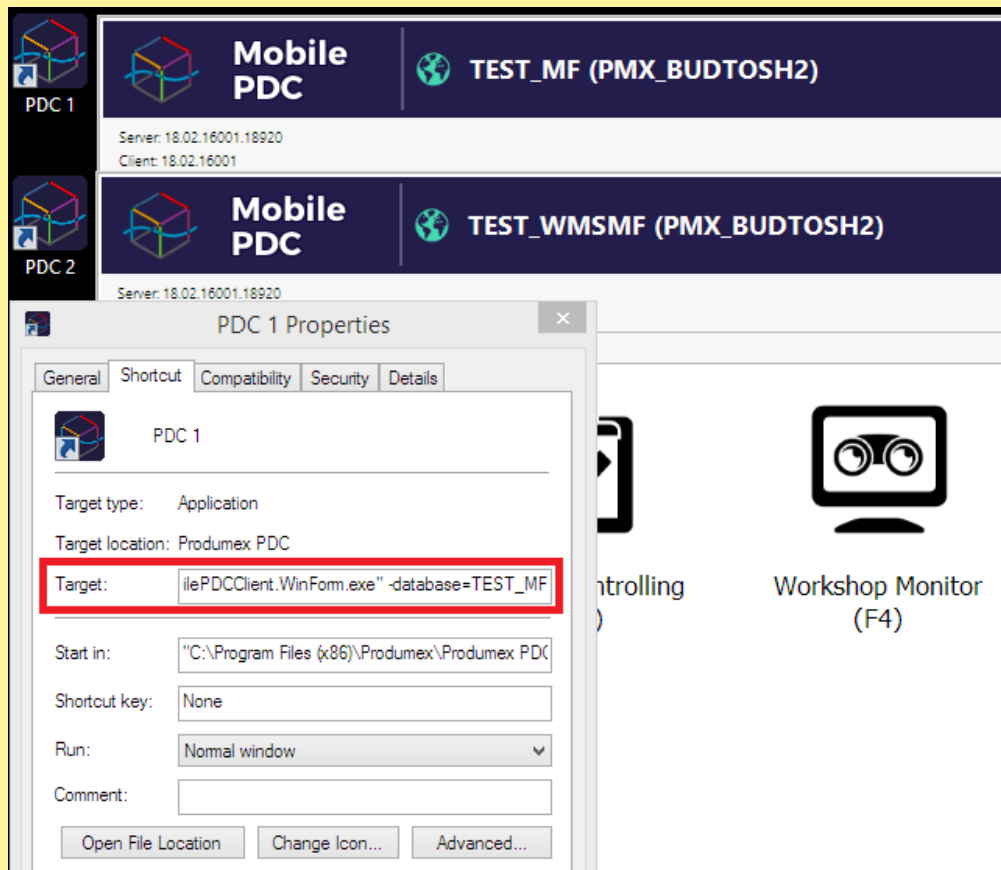


It is possible to start the PDC application with a -database parameter. If multiple databases are configured in the Service Broker, you do not have to start the PDC Configuration every time you would like to switch between databases.



Create shortcuts for the BXPPSMobilePDCClient.WinForms.exe. The file is located in C:\Program Files (x86)\Produmex\Produmex PDC

Add the database with the '-database=' parameter to the end of the file path in the Target field.



Please note: Make sure that the Produmex Manufacturing add-on is installed on all databases with the same version as the Service Broker.

3.5.3. Configuring Produmex Service Broker

The Produmex Service Broker can work together with different Produmex add-ons, therefore in the Service Manager you have to configure which add-on you want to use. To do that, click on the 'Configure...' button or select it from the line of the Service Broker.

General tab

If you set the '*Debug writeline log*' parameter to true, it will write a log about each command the Service Broker processes. **Only set it to true, if Produmex support asks you to do that.**

'*Kill time*' means that if a thread doesn't respond to a request within this time limit, it will be killed. The setting depends on your server. If you have a quick server, set it to a small number, if you have a slow server, set it higher. Default is 10 seconds.

'*Modules to load*' is the module of the add-on to which the service broker connects. It is automatically done by the module installer for you, so you only have to set this manually in specific cases. To add multiple modules, separate them by comma.

- In order to use Produmex Manufacturing, set it to *BXPPSMobilePDCWebAPI.dll*
- In order to use Produmex Scan, set it to *BXMobileWH9WebAPI.dll*
- In order to use Produmex Operator, set it to *BXMWWWebAPI.dll*.

At the '*Port to listen on*' you can set which port is used by the service broker to communicate with the clients. The default is 50231. Make sure that the port you set here is not blocked by any firewalls or antivirus software.

The '*Server Discovery Enable*' turns on the feature that the client can look up the running service broker server automatically. It makes setting up the clients easier.

You have to assign an administrator user to the service in the Windows Service Manager, otherwise the Service Broker cannot connect to SBO and cannot write to its log files. If the Service Broker stops right after starting it, and in the log file you have access denied errors, then the cause is that you haven't assigned the administrator user to the service.



Produmex Service Broker tab

On the Produmex Service Broker tab you can see the loaded modules, and you can remove/install new modules if needed.

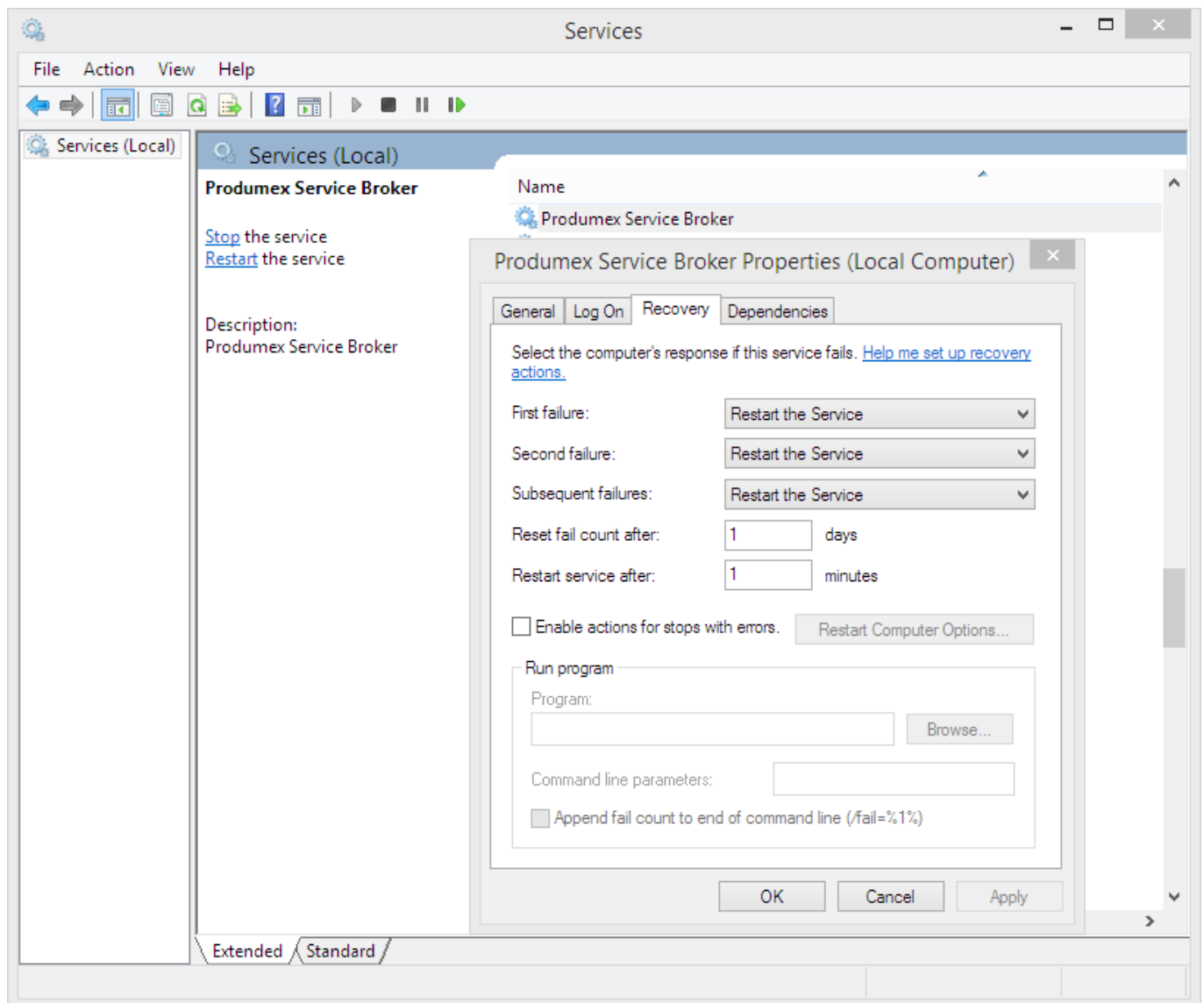
If you see a check icon before the module name, it means it could be loaded successfully. If a problem arises, you will see error beside the module name.



3.5.4. Start Produmex Service Broker

After you have set all settings and installed the server module, you can start the Service Broker service in the Service Manager by selecting first the service then clicking on the '*Start*' button. If you want to stop a service, click on the '*Stop*' button.

You can also stop or start the services from windows service manager, but you cannot change the Produmex settings there. It is recommended that you set the service to *Automatic start* and that you set the recovery options to *Restart at Recovery* in Service Properties for the service.



If you want to start the Service Broker from the command window, you can start it with “C:\Program Files (x86)\Produmex\ServiceBroker\BxServiceBroker.Console.exe” (or Service Broker (Console) program in the Windows Start menu) and you will see a window like this:

```
C:\Program Files (x86)\Produmex\ServiceBroker\BxServiceBroker.Console.exe
server.OpenAsync(<).Wait(<)>
12:21.00 Assembly loaded: System.Net.Http, Version=4.0.0.0
before Thread start
Listening on http://localhost:50231/
12:21.00 Listening on http://localhost:50231/
12:21.00 Started discovery service
12:21.00 Assembly loaded: BxServiceClientLib.WinForms, Version=17.11.30001.18920
12:21.01 Assembly loaded: Accessibility, Version=4.0.0.0
12:21.01 Assembly loaded: System.Xaml, Version=4.0.0.0
12:21.01 Assembly loaded: System.Runtime.DurableInstancing, Version=4.0.0.0
12:21.01 Assembly loaded: Microsoft.Practices.ServiceLocation, Version=1.0.0.0
12:21.01 Assembly loaded: CrystalDecisions.CrystalReports.Engine, Version=13.0.2000.0
12:21.01 Assembly loaded: CrystalDecisions.Shared, Version=13.0.2000.0
12:21.01 Assembly loaded: CrystalDecisions.ReportSource, Version=13.0.2000.0
12:21.01 Assembly loaded: Antlr3.Runtime, Version=3.5.0.2
12:21.01 Assembly loaded: Anonymously Hosted DynamicMethods Assembly, Version=0.0.0.0
12:21.01 Assembly loaded: BxServiceCommon, Version=17.11.30001.18920
12:21.01 Assembly loaded: System.Web, Version=4.0.0.0
12:21.01 Assembly loaded: System.ComponentModel.DataAnnotations, Version=4.0.0.0
12:21.01 Assembly loaded: System.Xml.Linq, Version=4.0.0.0
Test Status: Running
```

The use of the command window is recommended for debugging purposes. In production environment the use of the service is more efficient.

From:

<https://wiki.produmex.name/> - Produmex

Permanent link:

https://wiki.produmex.name/doku.php?id=implementation:manufacturing:service_manager&rev=1528186523

Last update: 2018/06/05 08:15

