

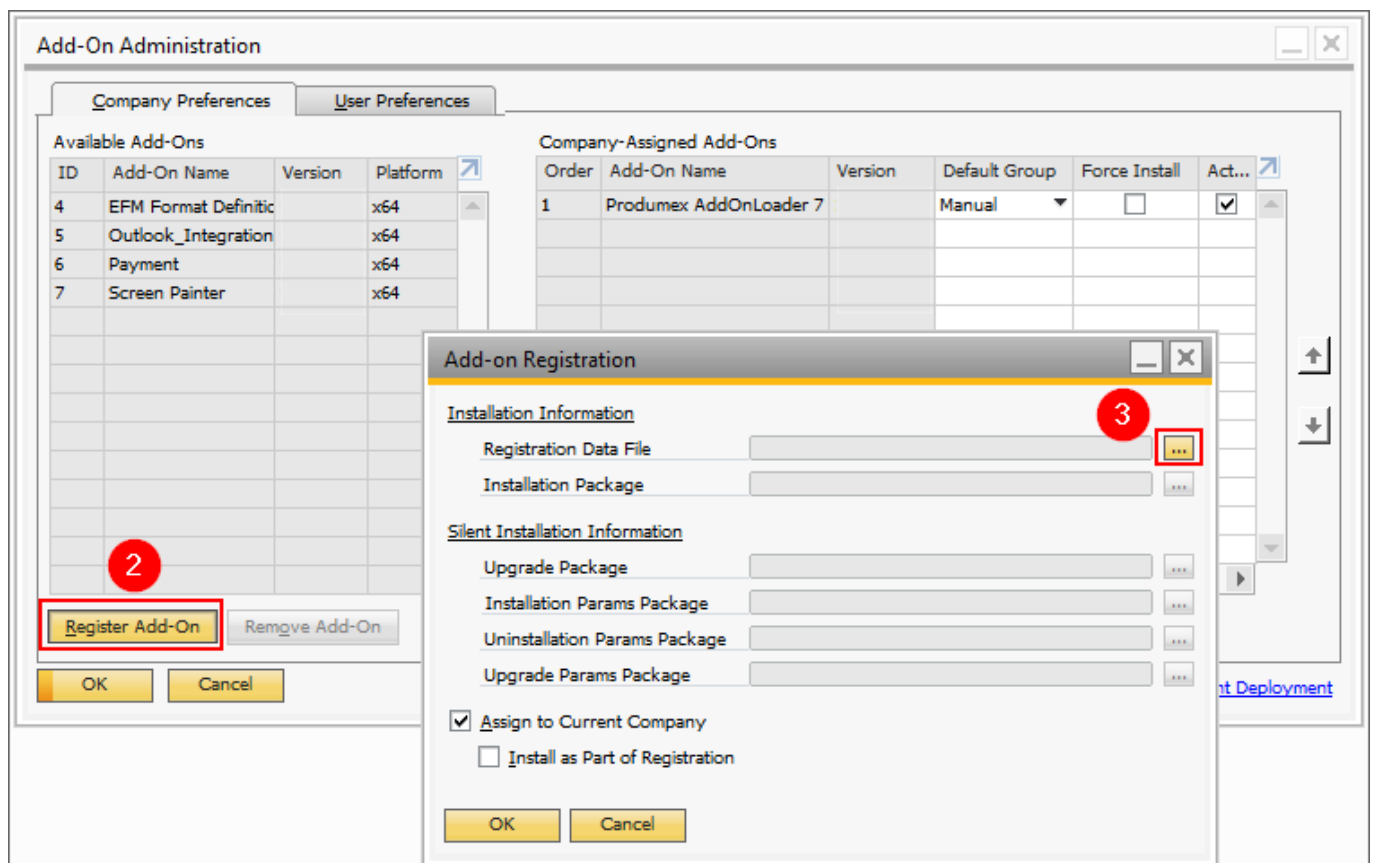
3.5. Registering the Produmex add-on

The following section describes the steps of registering the Produmex add-on component in Sap Business One on premise or in SAP Cloud.

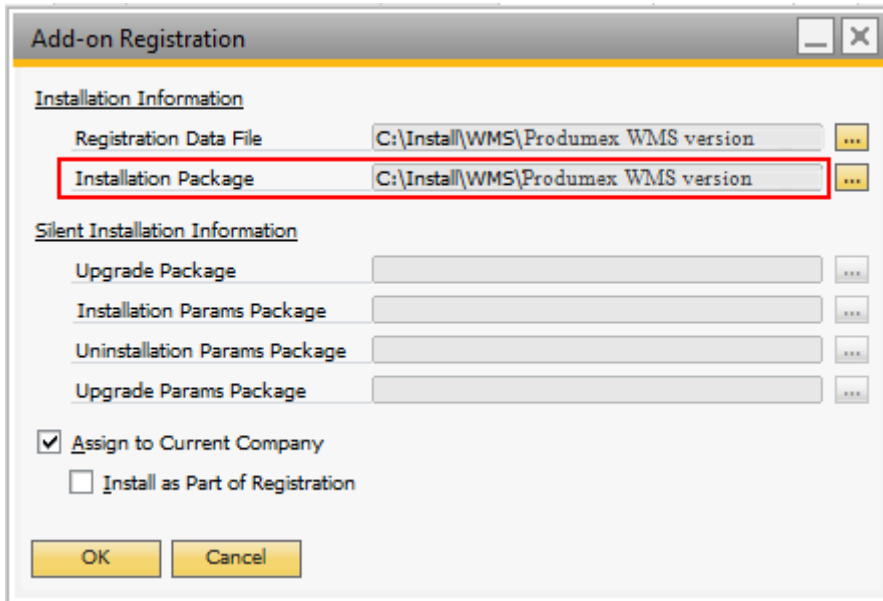
Note: Make sure you run SAP Business One Client as administrator.

3.5.1. Registering the add-on on premise

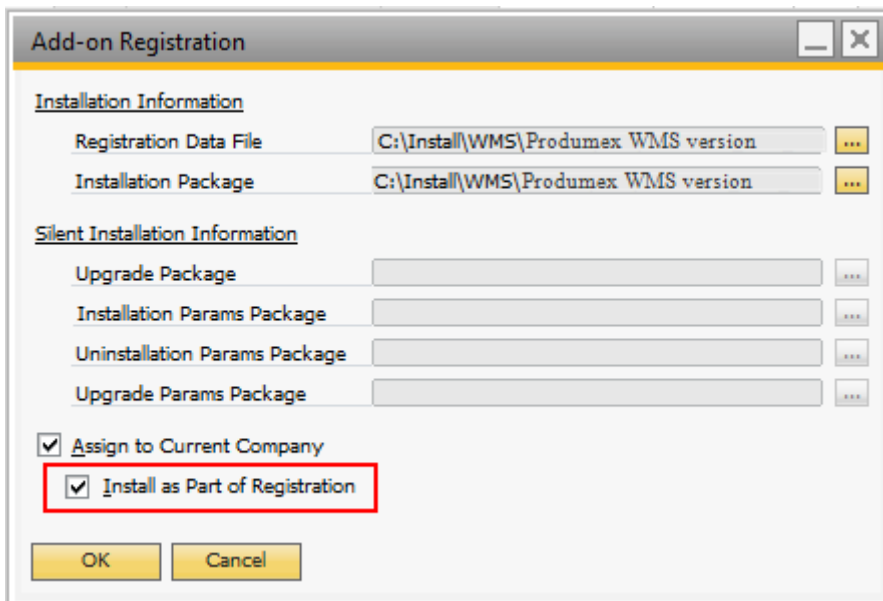
1. In SAP Business One navigate to Administration > Add-Ons > Add-On Administration.
2. Click on the Register Add-On button.
3. Browse the add-on loader installation .ard file after clicking on the ... button. The installation file is located in the installation zip folder \<SBO Version>\AddOnLoader.



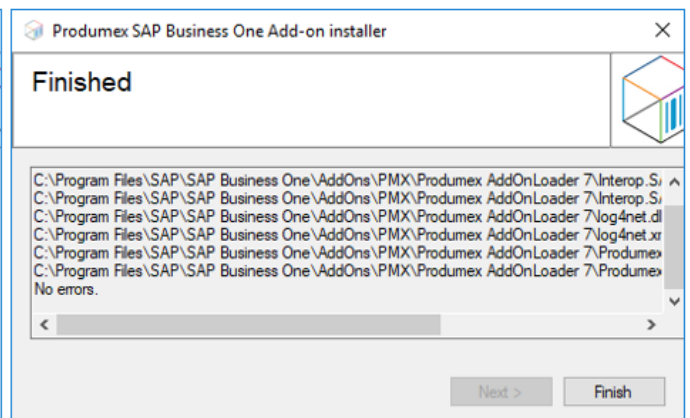
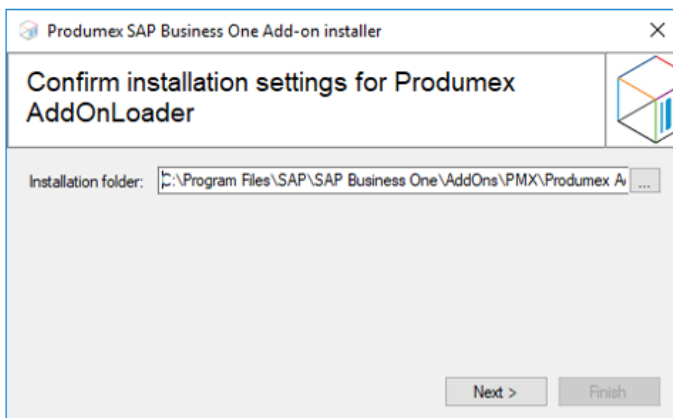
When selecting this file the associated add-on installation package is also opened.



4. Check the *Install as Part of Registration* checkbox and click OK.



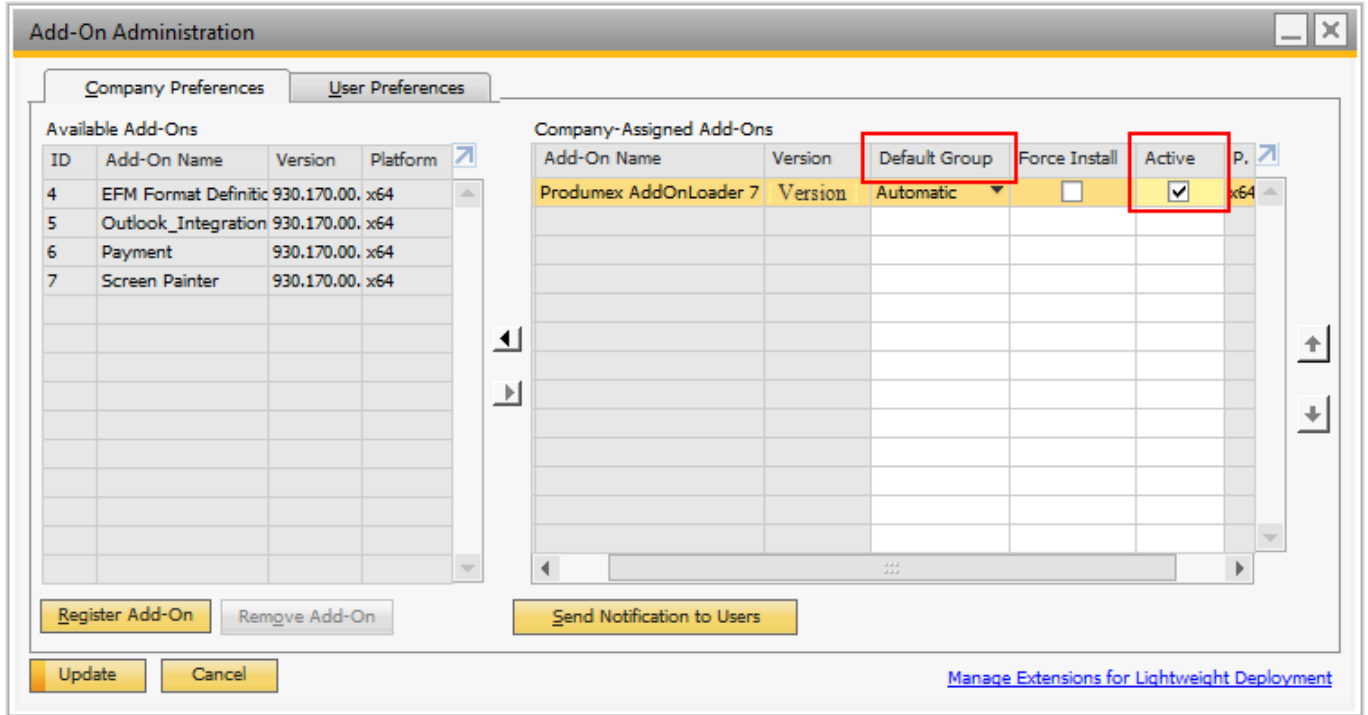
5. On the opening Add-on Installer screen select the installation folder, then click Next and then click Finish.



6. When the installation is finished, close and then restart SAP Business One.

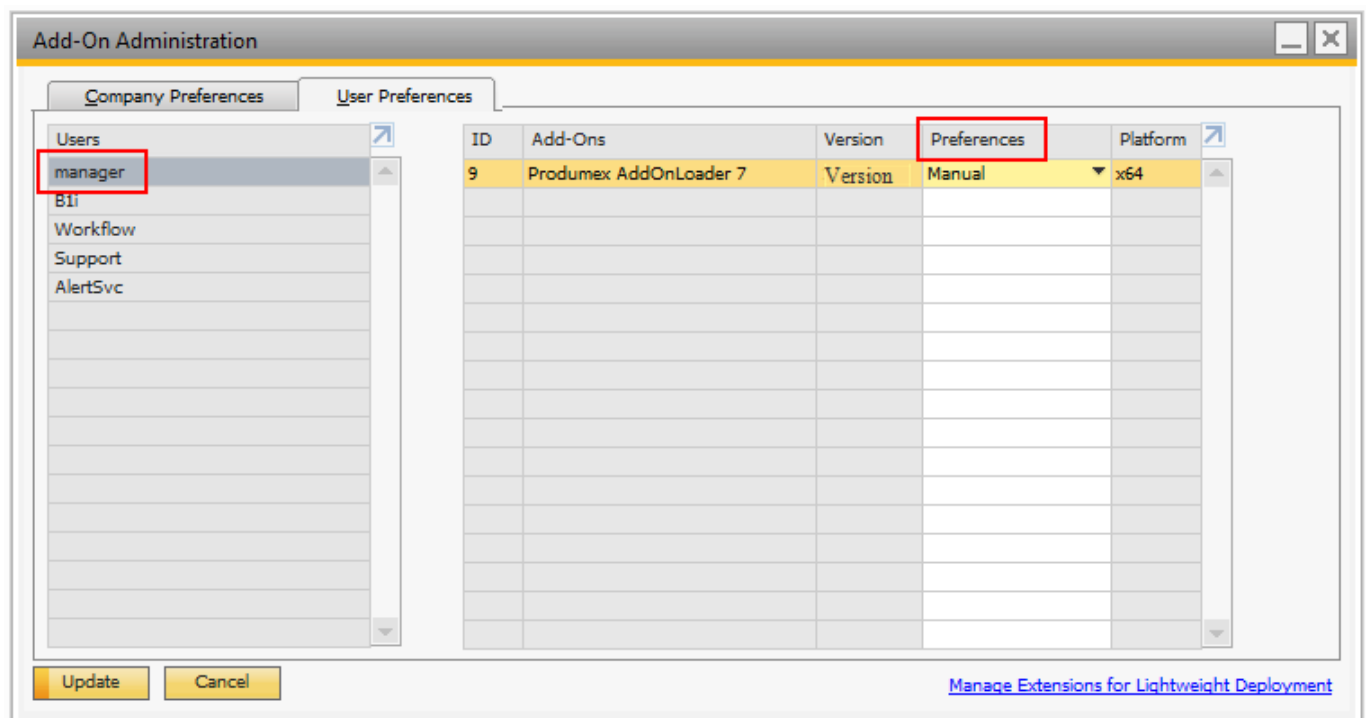
7. In SAP Business One navigate to Administration > Add-Ons > Add-On Administration.

8. On the *Company Preferences* tab select the Produmex Add-On Loader. Tick the *Active* checkbox and set the Default Group.



9. On the *User Preferences* tab select the user *manager* to check if the Preferences is set to the wished value for the Produmex Add-on Loader.

10. Click Update.



3.5.2. Registering the add-on in SAP Cloud

3.5.2.1. Installing the Add-On Loader on the Cloud Control Center

1. Create a Produmex sub folder within the folder you defined as the Extension Repository Path in Cloud Control Center.
2. Upload the zip folder of the lightweight installer to this Produmex folder. Do not unzip the file.

The zip folder is named:

Produmex_WMS_<versionnumber>.<SBOversion>_AddOnLoader_lightweight.zip.

It can be found in the installation zip folder of Produmex WMS:

Produmex_WMS_<versionnumber>.<SBOversion>\<SBOversion>\AddOnLoader.

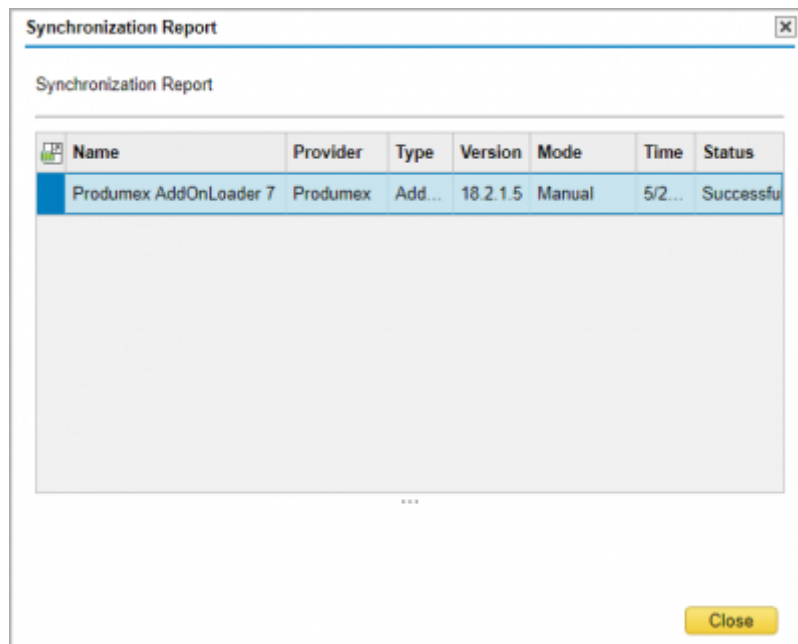
Regardless of the environment displayed in the name of the Produmex WMS installation folder, the lightweight installer zip contains both the x32 bit and the x64 bit installation files.

3. On the Cloud Control Center, navigate to Landscape Management > Extensions.
4. Check whether the installation file is listed on the *Extensions* grid.
5. Click on the Synchronize All button to install the Produmex Add-On Loader and confirm that you would like to synchronize all extensions by clicking Yes.

The screenshot shows the SAP Cloud Control Center interface. The left sidebar contains a navigation menu with 'Extensions' selected. The main area displays the 'Extensions' grid with columns: Name, Version, Provider, Type, Platform, and Path. A 'Synchronize All' button is visible at the top left of the grid. A 'Confirmation' dialog box is open in the center, asking 'Do you want to synchronize all extensions to repository?' with 'Yes' and 'No' buttons. Below the grid, the 'Configuration' tab for the selected extension 'Produmex AddOnLoader 7' is visible, showing details like Name, Version (18.2.1.4), Type (Add-On (Lightweight)), and Provider (Produmex).

Name	Version	Provider	Type	Platform	Path
Produmex AddOnLoader 7	18.2.1.4	Produmex	Add-On (...)	Any CPU	\\DEVCCSRV.prod.be\Shared\Extensions\Repository\Produmex\Produmex AddOnLoader 7\18.2.1.4
B1 Usability Package	2018.05.00.0	Boyum S...	Add-On (...)	Any CPU	\\DEVCCSRV.prod.be\Shared\Extensions\Repository\Boyum Solutions\B1 Usability Package\2018...
Produmex Scan	18.1.10018.20...	Produmex	Add-On (...)	Any CPU	\\DEVCCSRV.prod.be\Shared\Extensions\Repository\Produmex\Produmex Scan\18.1.10018.20930
Produmex Manufacturing	18.1.10018.20...	Produmex	Add-On (...)	Any CPU	\\DEVCCSRV.prod.be\Shared\Extensions\Repository\Produmex\Produmex Manufacturing\18.1.10...
SBOScript	930.120.02	SAP	Add-On	32 bit	

If the installation is successful, on the opening Synchronization Report screen the status of the Produmex Add-On Loader is successful. The installation zip is automatically moved to the Produmex Shared Repository folder.

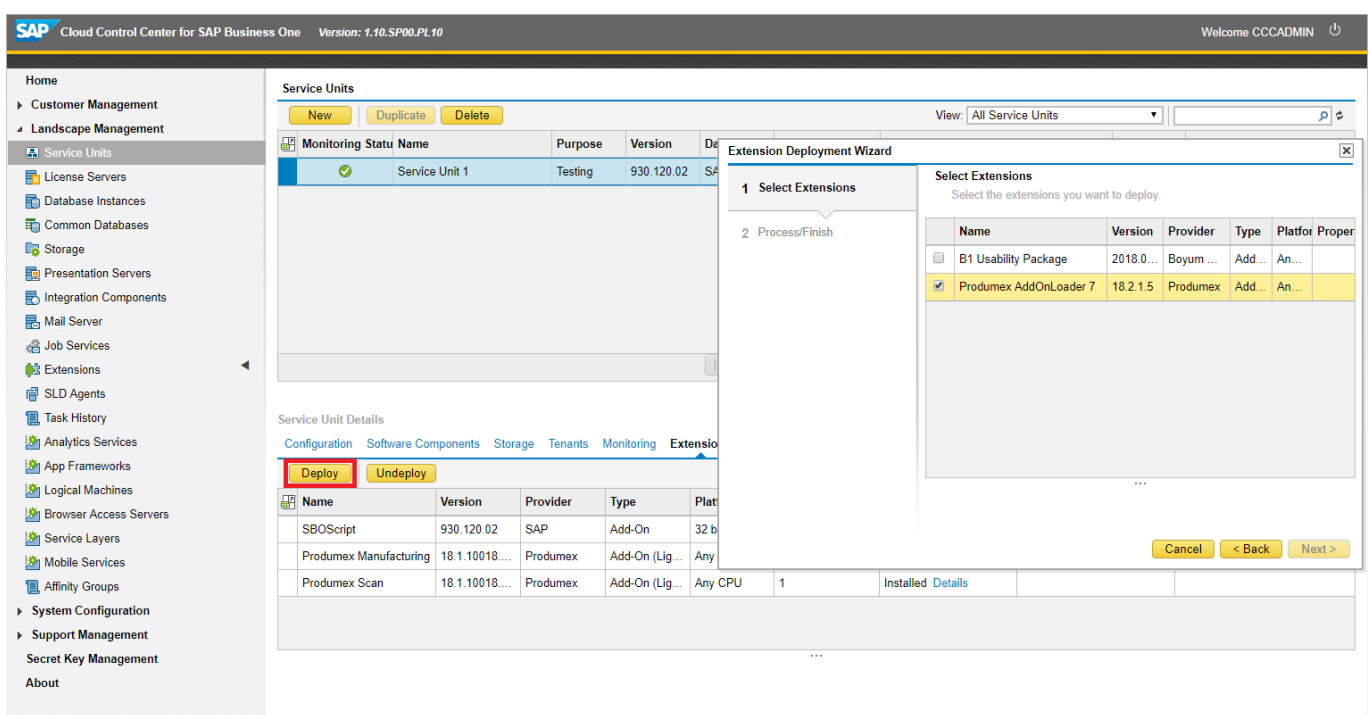


3.5.2.2. Deploy the Add-On Loader to the Service Unit

When upgrading the add-on to a new version, make sure that the add-on is not running on any presentation server. If there is a running add-on, the upgrade will fail.

The next step is to deploy the add-on loader on every service unit where you would like to use it.

1. Navigate to Landscape Management > Service Units. O
2. n the *Service Units* grid select the target service unit.
3. On the *Service Unit Details* grid go to the *Extensions* tab and click on the *Deploy* button.
4. Follow the steps of the *Extension Deployment Wizard*.
5. Select the *Produmex Add-On Loader* at the *Select Extensions* step, then finish the deployment.

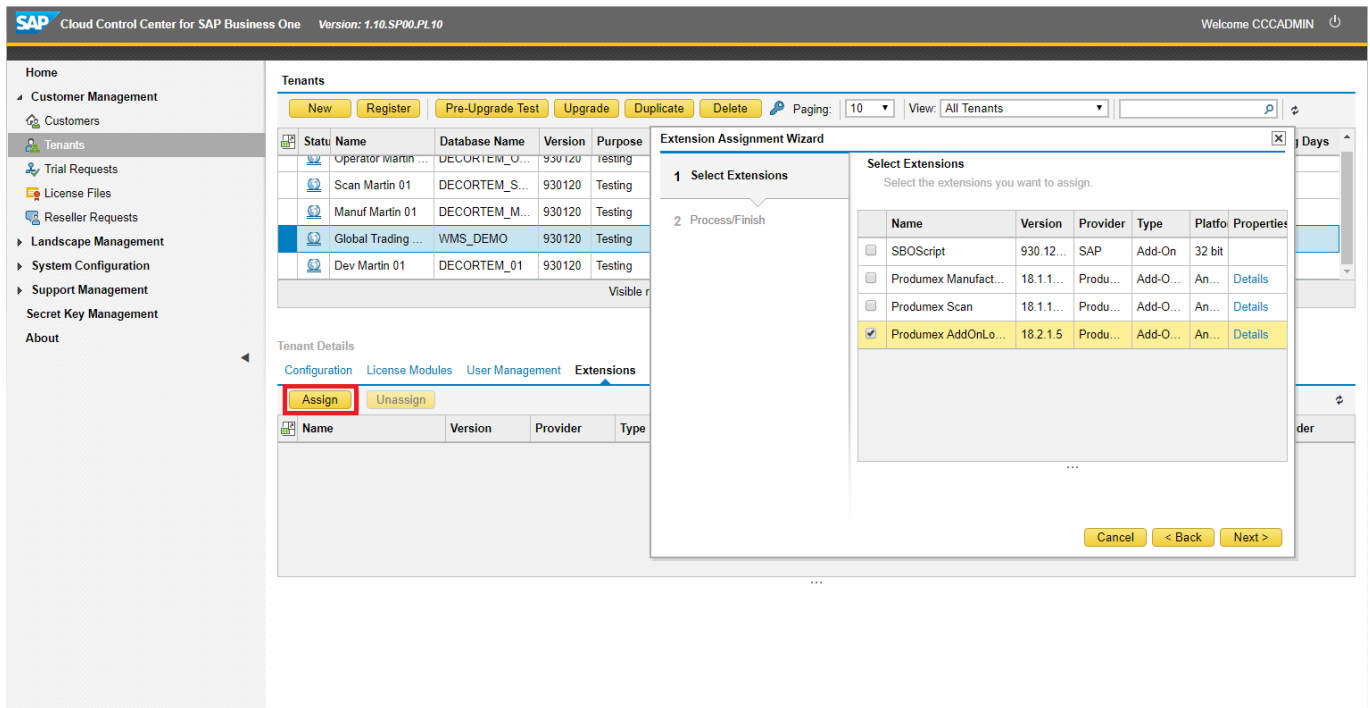


3.5.2.3. Assigning the add-on loader to the tenant(s)

The next step is to assign the Produmex Add-On Loader to the tenant(s) where you would like to use it.

Note: This step is not required in the case of a version upgrade.

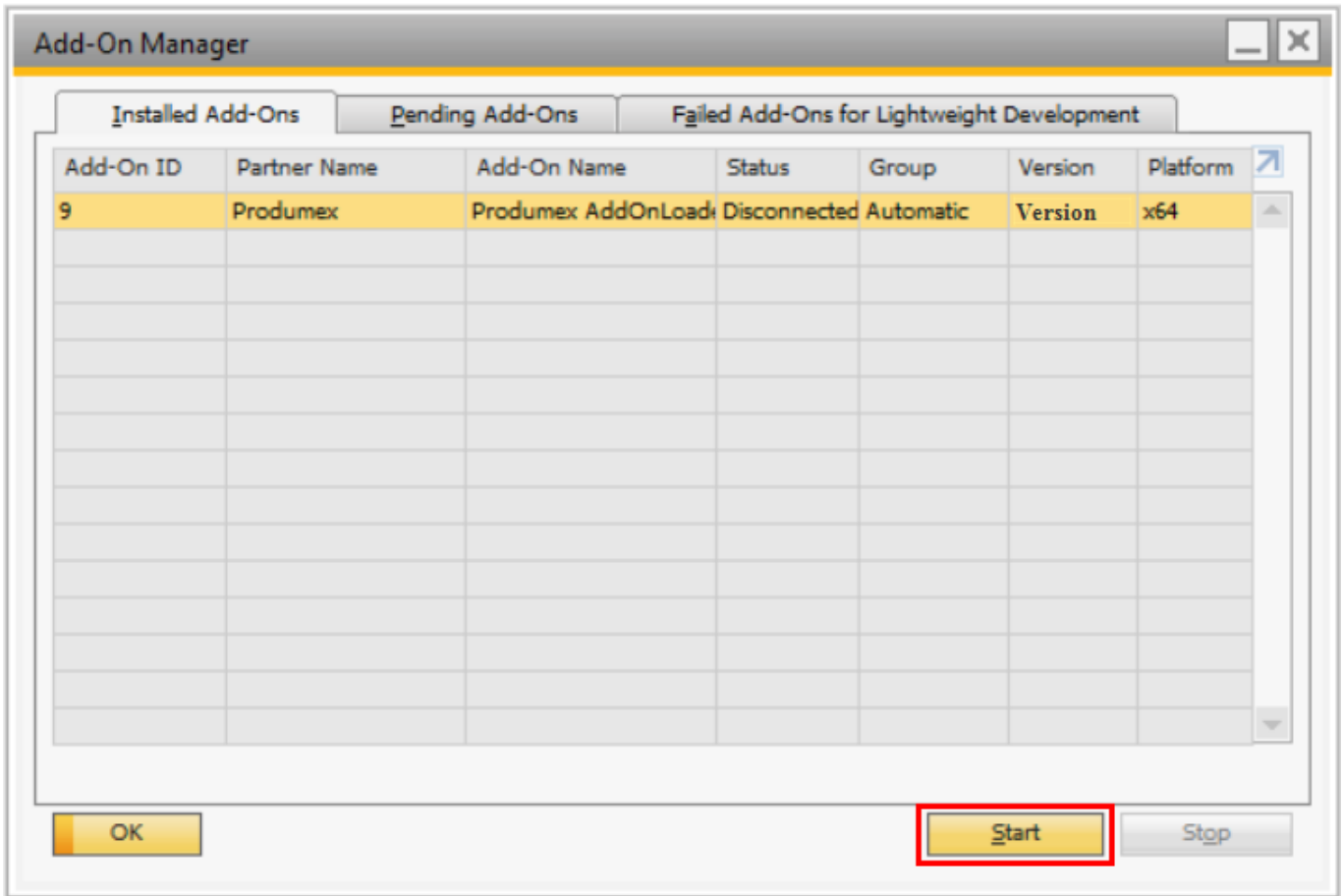
1. Go to Customer Management > Tenants.
2. Select the tenant on the *Tenants* grid.
3. On the *Tenant Details* grid navigate to the *Extensions* tab, then click on the Assign button.
4. Follow the steps of the Extension Assignment Wizard.
5. In the *Select Extensions* step select the Produmex Add-On Loader, then finish the assignment.



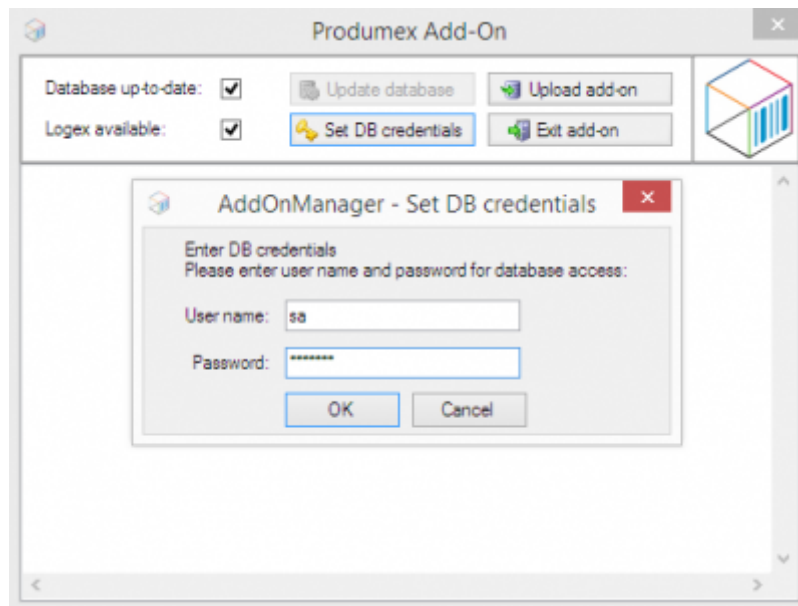
3.5.3.Updating database

Note: This step is not required in the case of a version upgrade.

1. In SAP Business One navigate to Administration > Add-Ons > Add-On Manager > *Installed Add-Ons* tab.
2. If the Produmex Add-On Loader is not running, select it and click Start.



3. On the opening screen click on the Update Database button to perform the needed database changes. If the database is already updated, *Database up-to-date* checkbox is checked and this step can be skipped.
4. Click on the Set DB credentials button.
5. On the opening form enter the DB credentials.
6. After the credentials are set, click on the Exit Add-On button to download the files needed for the add-on.



From:

<http://wiki.produmex.name/> -

Permanent link:

http://wiki.produmex.name/doku.php?id=implementation:wms:install_registeraddon



Last update: **2019/09/17 15:59**