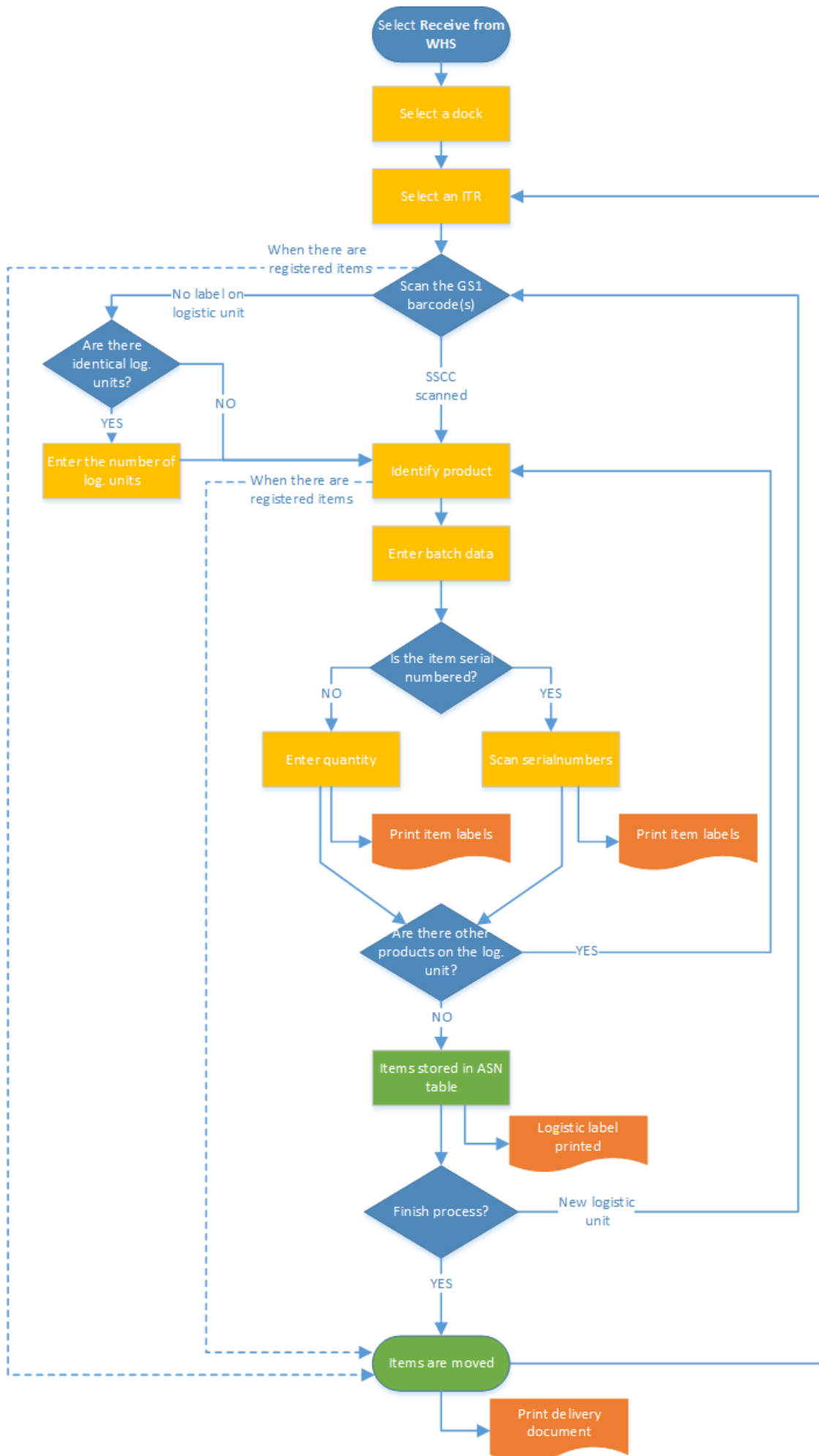


12.5.1. Receive from WHS flow

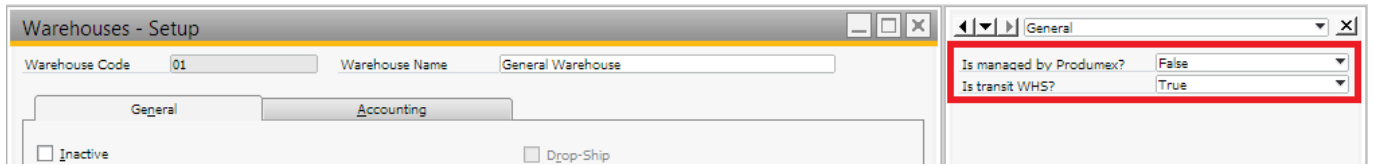
This flow is used to move stock from a warehouse that is not managed by Produmex to a warehouse that is managed by Produmex.

It uses an 'Inventory transfer request' document to move the stock between warehouses.



12.5.1.1. Setup source warehouse

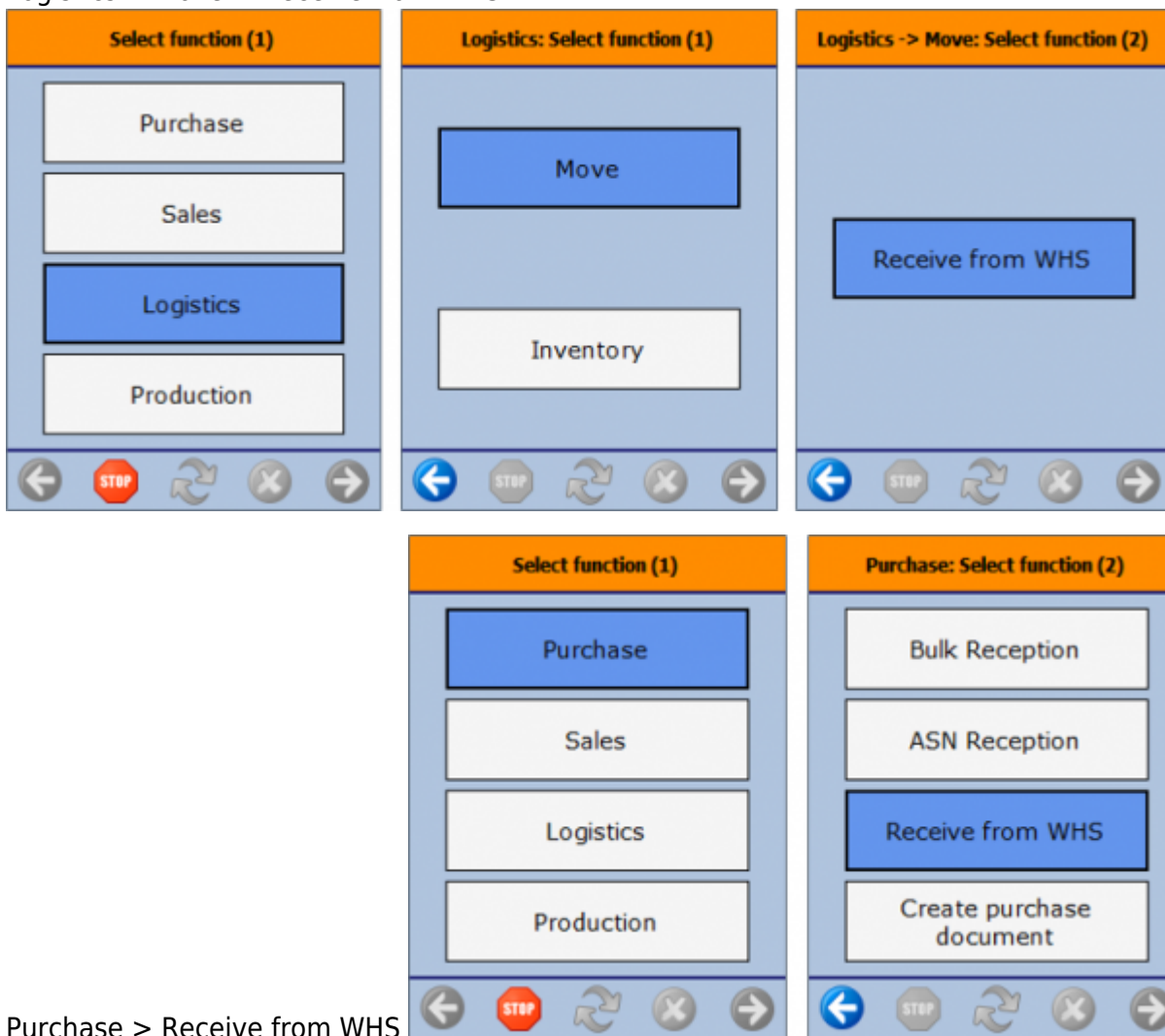
This flow will use a transit warehouse not managed by Produmex as the source warehouse. Adjust the settings of the source warehouse on the User Defined Fields of the 'Warehouses-Setup' screen.



12.5.1.2. Initiate the flow

To initiate the flow, press the 'Receive from WHS' button. The button can be reached via two paths:

- Logistics > Move > Receive from WHS

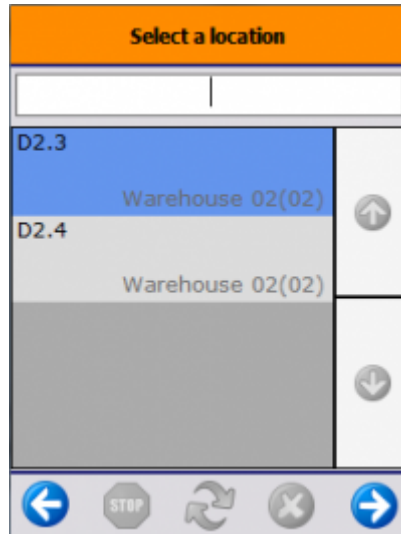


Purchase > Receive from WHS

12.5.1.3. Select a dock

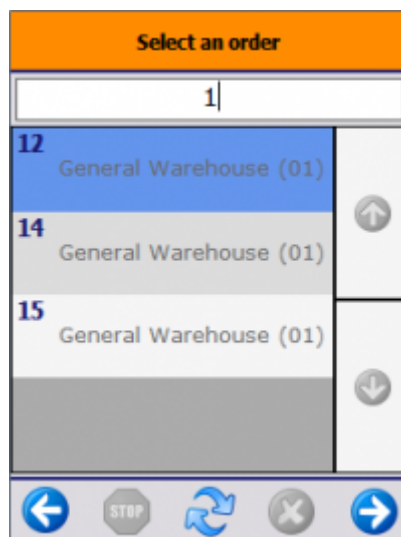
Select the receiving dock from the list of the available locations or enter the code of the dock. Press

the right arrow key to proceed.



12.5.1.4. Select an inventory transfer request

Select the inventory transfer request from the list of the orders or enter the number of the inventory transfer request. Press the right arrow key to proceed.



12.5.1.5. Scan the GS1 barcode(s)

Scan the barcode(s) on the logistic unit. After having all the barcodes scanned, press the 'Done' button. All the information from the GS1 barcodes will be saved into the memory and the system will not ask additional questions about the scanned information.

If there is no label on the logistic unit, press the 'No label on the logistic unit' button.

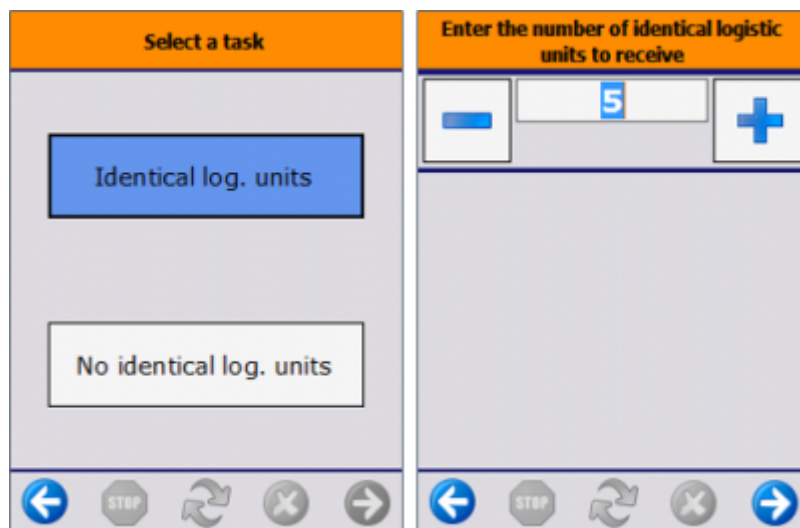


12.5.1.6. Identify identical logistic units

If there are no SSCC barcodes among the scanned barcodes, or there is no label on the logistic unit, the system will ask if there are identical logistic units.

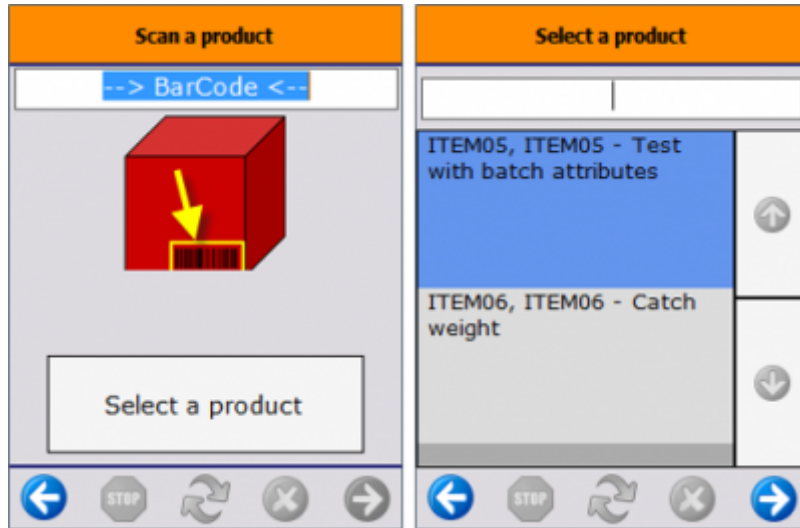
If there are identical logistic units, press the button 'Identical logistic units'. After pressing this button, the system will ask the quantity of the identical logistic units. Enter the number of the logistic units. The number of the logistic units is not limited. Press the right arrow key to proceed.

If there are no identical logistic units, press the 'No identical logistic units' button.



12.5.1.7. Identify product

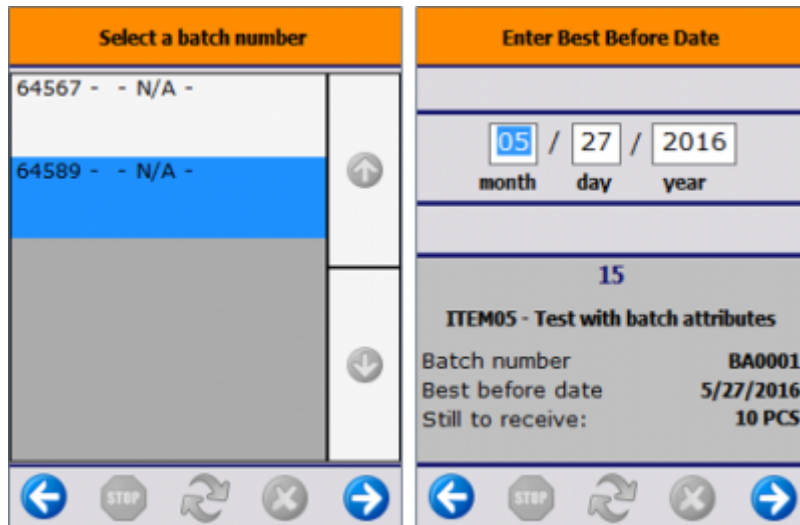
Scan the barcode or press the 'Select a product' button. After pressing the 'Select a product' button, select the product from the list.



12.5.1.8. Enter batch data

If the batch number was not scanned previously, select it from the list. At this step, new batch numbers cannot be added to the system. Only batches available in the source warehouse can be selected.

Based on the item settings, additional data can be entered to the batch. Eg: Best Before Date, second batch number, batch attributes, etc.



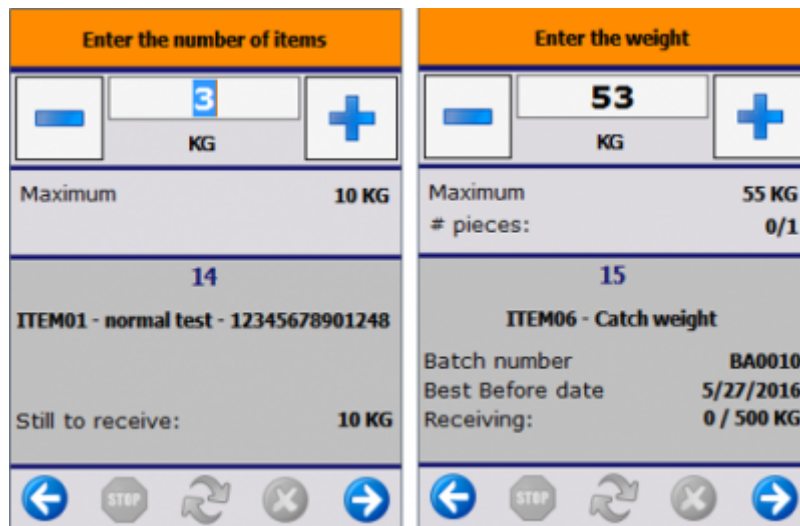
12.5.1.9. Enter quantity

Enter the item quantity or scan the serial numbers. The entered quantity cannot exceed the open quantity defined in the inventory transfer request.

When an item has a serial number, the system will automatically offer the scanning option.

Based on the settings of the catch weight function, the system might ask for entering the weight as well.

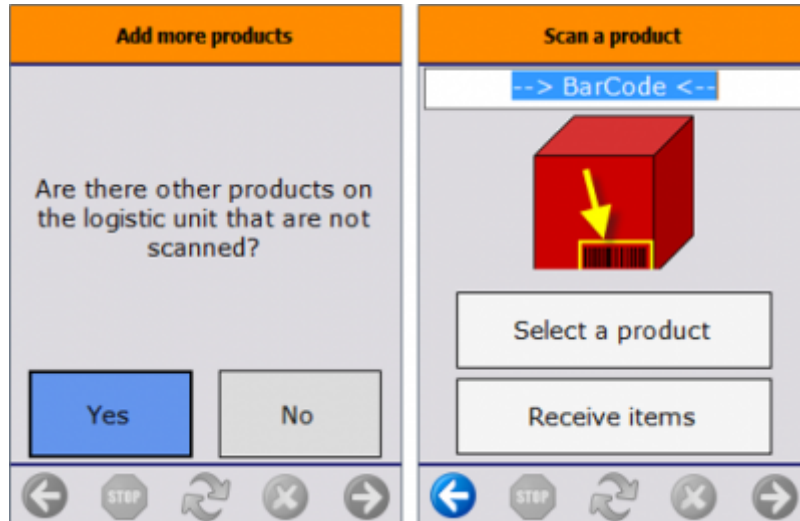
After having entered the quantity, the system might print the item label(s), depending on the item settings.



12.5.1.10. Add more products from the logistic unit

After having entered the quantity, the system will ask whether there are other products on the logistic unit that are not scanned.

If there are other products on the logistic unit, press the 'Yes' button. Identify the products on the logistic unit by going back to the [Identify product](#) step. For finishing the process, press the 'Receive items' button. When pressing the 'Receive items' button the system will book the inventory transfer.



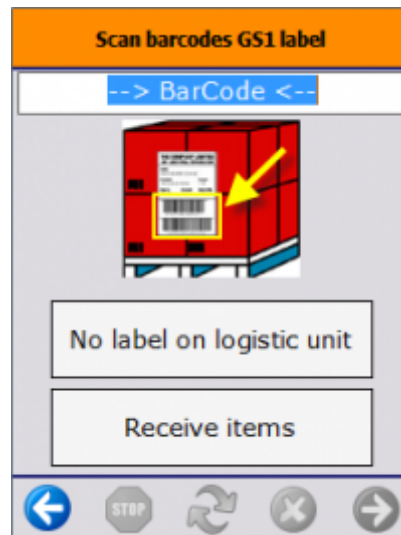
If there are no other products on the logistic unit, press the 'No' button. When pressing the 'No' button the system will register the item. The data of the registered items is stored in ASN tables.

Because the data of the registered items is stored in the system, it is possible to continue the flow after an abortion without booking the items.

If there were no SSCC barcodes among the scanned barcodes, or there was no label on the logistic unit, the system will generate an SSCC barcode. The system will also trigger the 'Warehouse: a new LU has been created (700)' print event and will print the logistic label. The default report for this print event is the 'DefaultLogisticsLabel.rpt'.

If the *Move all items in 1 stock transfer?* option is disabled on the [Receive from WHS controller](#), the Inventory Transfer document is created and the system returns to the [Select an inventory transfer request screen](#).

If that option is enabled, the system goes back to the [Scan the GS1 barcode](#) screen. On this screen an additional 'Receive items' button is displayed. The Inventory Transfer document is only created after the 'Receive items' button is pressed.



12.5.1.11. Finish process

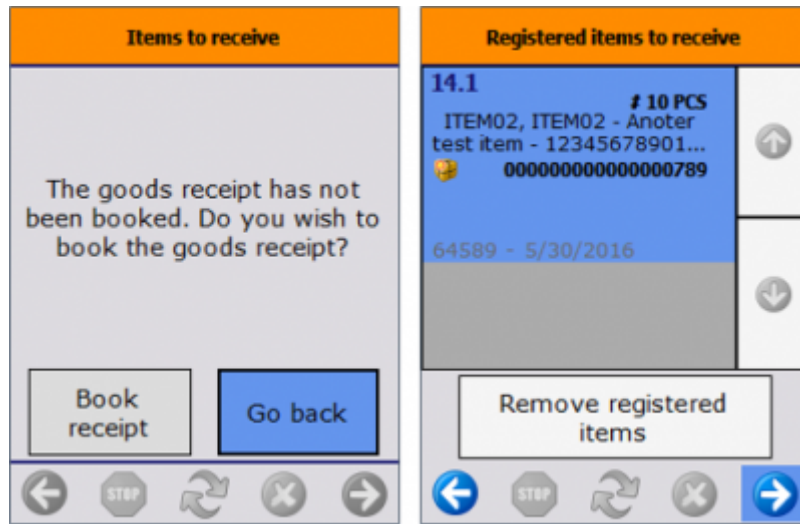
Continue the flow on a next logistic unit by going back to the [Scan the GS1 barcode\(s\)](#) step. For finishing the process, press the 'Receive items' button.

When pressing the 'Receive items' button the system books the inventory transfer. The system also triggers the *'Warehouse: move has been added (701)'* print event and prints the delivery document.

After having booked the items, the system goes back to the [Select an order screen](#), and the flow can be continued with another inventory transfer request.

12.5.1.12. Continue the flow after an abortion

In case of quitting after the item registration, the system offers the option 'Book receipt'. Despite not booking the receipt, the flow can be continued after the registration step, because the system stores the data of the registered items in ASN tables.



If there are registered items in the system that were not booked, after the [Select an inventory transfer request](#) step the system will ask whether to remove the registered items.

When pressing the 'Remove registered items' button, the system will remove the registered items and the flow will continue from the [Scan the GS1 barcode\(s\)](#) step. When pressing the right arrow key, the flow will proceed with the registered items.

From: <http://wiki.produmex.name/> -

Permanent link: http://wiki.produmex.name/doku.php?id=implementation:wms:flows_receivefromwhs&rev=1539619083

Last update: **2018/10/15 15:58**