

# Licensing System

Starting from version 19.1 the license module uses the Boyum IT portal for the licences. When upgrading from a version older than 19.1 to version 19.1 or higher, make sure that you have a license on the [Boyum IT Portal](#). The old license files should not be used any more.

After a new license is imported via the Produmex Scan add-on, make sure that you **restart the Produmex Service Broker**.

## 1. Required licenses for a Produmex Scan installation

### Produmex Scan add-on

For the Produmex Scan add-on no extra SBO license is needed. The required SBO license depends on the SBO function the user will use to prepare documents for the Produmex application in the office environment, e.g. to create pick lists. Consult with the SAP Business One official licensing documentation for more information on which SBO license type is required for your installation.

### Client application

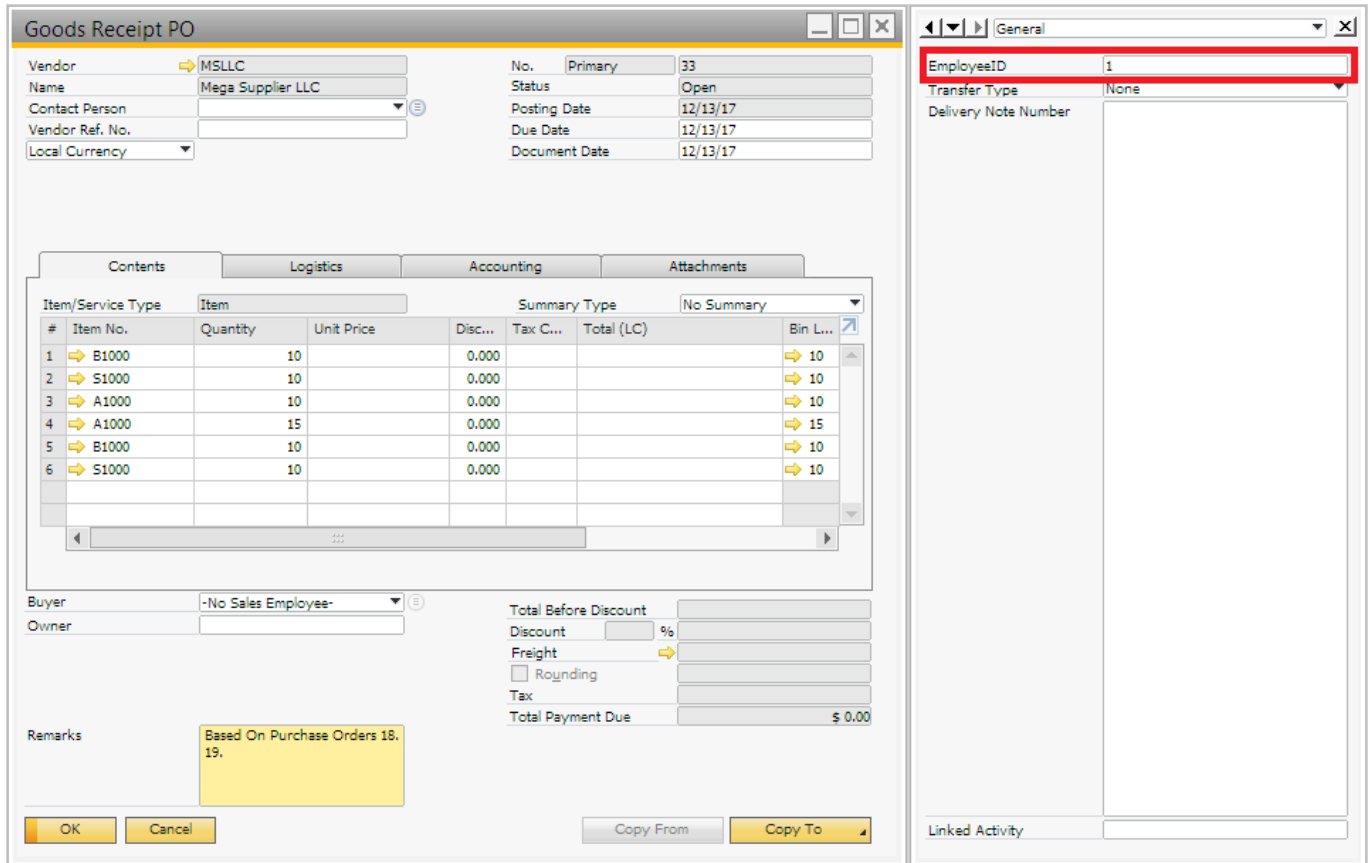
Since Produmex Scan devices have concurrent licensing, the number of required licenses depends on the number of devices that are used concurrently. Allocation happens automatically.

### Produmex Service Broker

Only one SAP Indirect Access User license is required per installation. The Produmex Service Broker will use this user to create documents in SAP Business One.

As the Produmex Service Broker is assigned to one SBO user, all SBO documents created with Produmex Scan devices are created by the same user.

Tip: It is possible to check the employee who created the document with the Produmex Scan device. The Employee No. of the employee is stored in a UDF on the document header.



## 2. Allocating licenses for terminals

Terminals have concurrent licensing, that is, licenses do not have to be assigned to a certain terminal. Instead, the system allows as many concurrent connections as the total number of terminals in the license.

Each time logging in on the terminal, the system checks if there is a free license slot that can be allocated for the terminal.

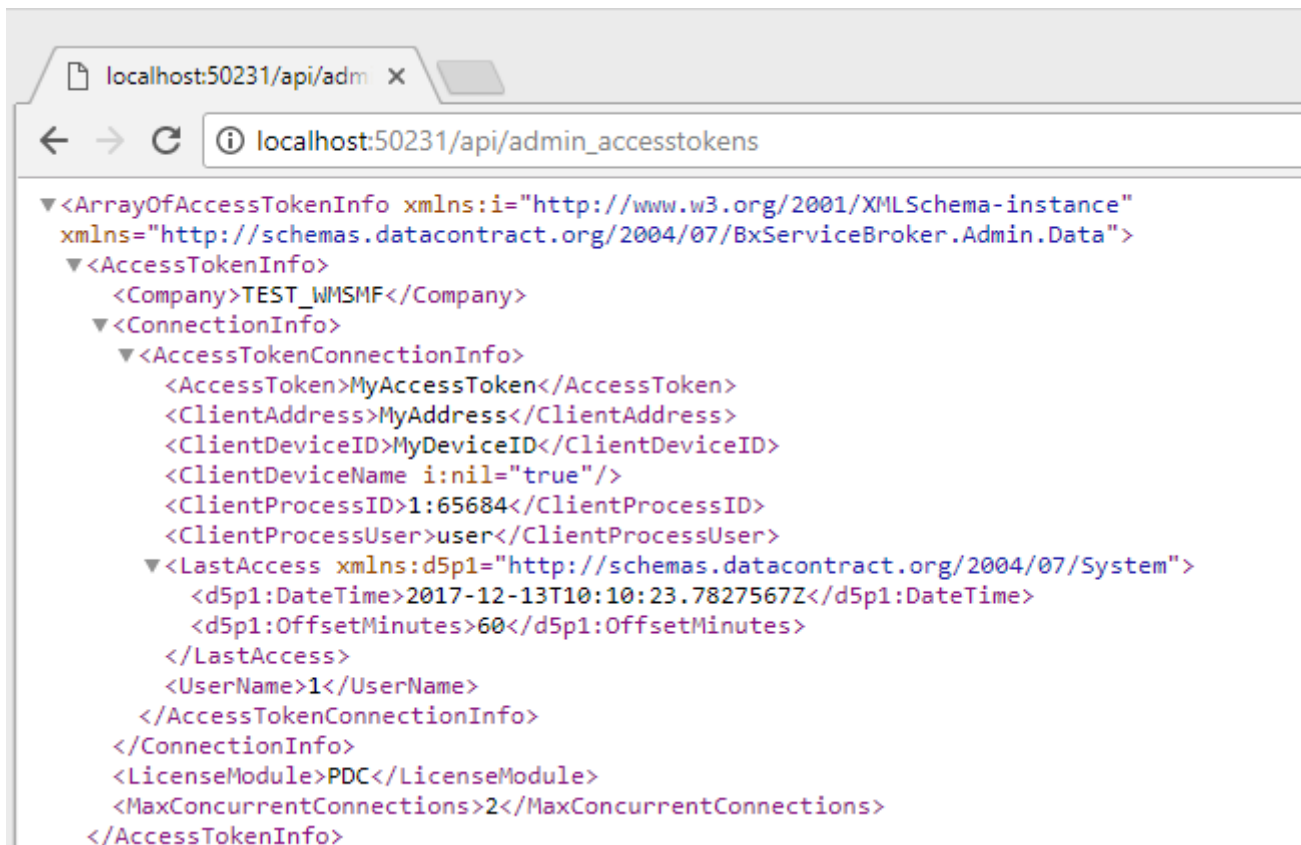
- If there is a free license, the system allocates it to the terminal.
- If there is no free license, an error message is displayed.

After the logout, the system deallocates the license from the terminal.

The current status of the license usage can be seen on a webpage of the Service Broker:

```
http://<IP>:<PORT>/api/admin_accesstokens
```

where the IP is the IP address and the PORT is the port number.



```

<ArrayOfAccessTokenInfo xmlns:i="http://www.w3.org/2001/XMLSchema-instance"
xmlns="http://schemas.datacontract.org/2004/07/BxServiceBroker.Admin.Data">
  <AccessTokenInfo>
    <Company>TEST_WMSMF</Company>
    <ConnectionInfo>
      <AccessTokenConnectionInfo>
        <AccessToken>MyAccessToken</AccessToken>
        <ClientAddress>MyAddress</ClientAddress>
        <ClientDeviceID>MyDeviceID</ClientDeviceID>
        <ClientDeviceName i:nil="true"/>
        <ClientProcessID>1:65684</ClientProcessID>
        <ClientProcessUser>user</ClientProcessUser>
        <LastAccess xmlns:d5p1="http://schemas.datacontract.org/2004/07/System">
          <d5p1:DateTime>2017-12-13T10:10:23.7827567Z</d5p1:DateTime>
          <d5p1:OffsetMinutes>60</d5p1:OffsetMinutes>
        </LastAccess>
        <UserName>1</UserName>
      </AccessTokenConnectionInfo>
    </ConnectionInfo>
    <LicenseModule>PDC</LicenseModule>
    <MaxConcurrentConnections>2</MaxConcurrentConnections>
  </AccessTokenInfo>

```

When Produmex Service Broker has multiple assigned databases, each database can have as many connections as in the license. For example, if you have a license for 3 terminals, and the Service Broker has 4 assigned databases, each database can have 3 connections and the total number of the potential concurrent connections is 12.

## 3. Online and offline licensing

### 3.1. Online solution

When you purchase the Produmex Scan add-on on the Boyum Portal, your license is automatically generated and if you have active Internet connection, your license is automatically downloaded.

**Important:** Make sure that you allow outbound access to our license servers (\*.boyum-it.com (port 80)) in your firewall configuration.

### 3.2. Offline solution

If you are not connected automatically to the license system or you have no active internet connection, visit the [offline license generator](#) of the Boyum IT Portal and get your license data as follows.

1. On the Get Manual License screen fill in the *Installation Number* field. For information on to how find your installation number click [here](#).
2. Select *Produmex Scan - Device license* in the drop-down *Product* list.

### 3. Click Submit.

**boyumit**  
Boyum Portal

## Get Manual License

Welcome to the offline license generator for the Boyum IT Solutions products.

To get your license data, please provide your installation no. choose the product you want to retrieve your license for and click submit

**Installation Number**

Depending on the license registration you have to enter either the installation number from SAP B1 or the installation number and the system number from SAP B1 delimited by an underscore (\_). Installation Number (10 digits) and System Number (18 digits) are available from within SAP via the Help | About SAP Business One menu item. Right-click each field to copy the numbers as they are long and easy to enter incorrectly when done manually.

**Product**

The portal displays your license data as follows:

**boyumit** Log In  
Boyum Portal

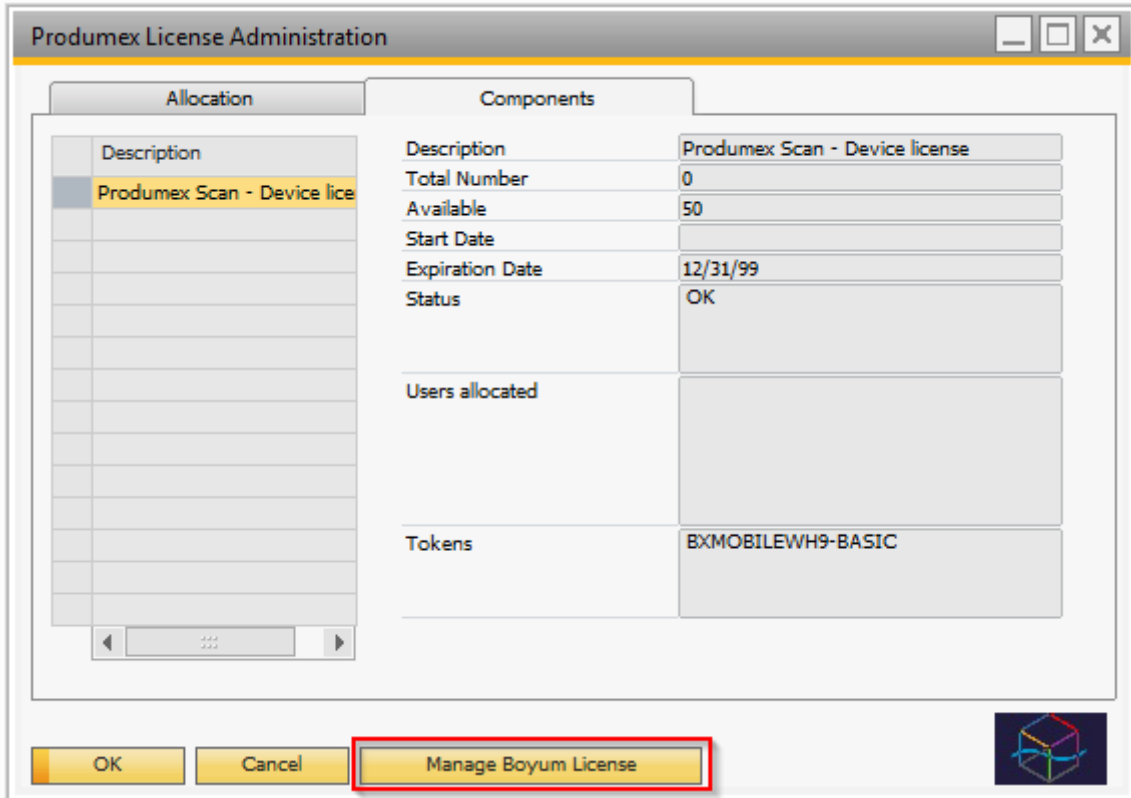
## License

Your license data are available below - for instructions on how to import them, please refer to the section further down this page.

```
A1235YHfKfTG3Ns8fyF2f+xJVb3uz02uTpw3EFT5j46zrvDMDmcAy7oNJduGU0ZpLlgw4EWON5dHRDJRmXNjl+pBapqfaFSbWK7fyVix1mVU0z6  
J/z3fBxzdeXgsKK9oyimaoyWzfnCnhPC/9Yr0QV0HkbzNI7pv5UculAEi6vIshUKije0VMDkwucgMTElrk7JmWP8Vcb1OUz6J/z3fBxzXhnHh95BQotx  
zvPT8/h4cSCn23lZr4y9GhTcgbbvDW78/JHSyLC4la/pexYXXSZJ7gJltGVAXy8lFA9z55KToAdHEl4/5IkMjPon/Pd8HHNeGceH3kFCi1gEDTq+zXp  
K08L/1ivRBXQqKiKe8DCqXmtc+G9JxqUgvTUhp7PH6+wM+if893wcc14Zx4feQUKLZuz/1JjPyo3rSfDvuLXayqpTNCgz8npUlnSDAybibg09FPnQ  
AtFtLAHZjb6w2vUUTD68OjnAjQ26RiPcgkngOJkyooaLkbuBtIVKriG4MYduuwSmQbDK76gLqqUZBpiiNlPHF/vFCBKB2Y2+sNr1FH4ulQqNT3NkP  
7+Y4vhXqowNMr1lczAntxK+idq7pSmFfcilHYG30lk0WOzJ9zwpmUnp2OfqyUW4kCid+uoNujpajAzzwn5WGjjq3T2+z17hSu86891j559GUZtZ77  
WnAHZjb6w2vUUEkj3lJJ4DiXPeokjd0A6BnEomiAvVFzLLzH5zSqp+Le6Hhnhq3kqyvyu+SXxdVr0EqVXbnkE0EiVPyqx4Y2XBPC/9Yr0QV0Hkbz  
NI7pv5UculAEi6vIspGI9yCseA4ny5QkLe3EYa84YceGTPKL856iOY20l944Xly4Z7Xr8atnPWBs4zUyns6EcUw+2vgmcSialC9UXMpvNk6pYQl19  
U4mcWzCSTn9fZgH1JB2106Av+iokKu9L7OAAgETzPmlM1ByhAfSX0ZxKJogL1Rcxhroe/7qwf0fBICjYsxKwJ1cvlJW4eIPGBNGfyEYJDxNdHU  
HPtDfPg4Sd2UteGncTi8Y163A7e/7wBixsdy3B2Y2+sNr1FEc3jy5DzZ+keWsiMXZwiUE/EcE5FRYffPQ7n1IHfiXYORi7NgHVtdi2t07nlo/GZ5sKKAA  
hSv9DsDPulQpqaJWB2Y2+sNr1FH4ulQqNT3NkDR4zdhr8IM2DUKIN5zA7XGFecS1mYgldMTJmJyY+oilD+FDK2zhaoC4+wxg3UvBol/WusbphBv  
5UXW866B0GdaG9of1Zi6oen1cww90eErLrHve4WMIPOBuR91USvEbi2sEBLiZ58w8q8AET+immHEmvsqYEiCsHSKBQl5q3baiuznlecW/2aa22q
```

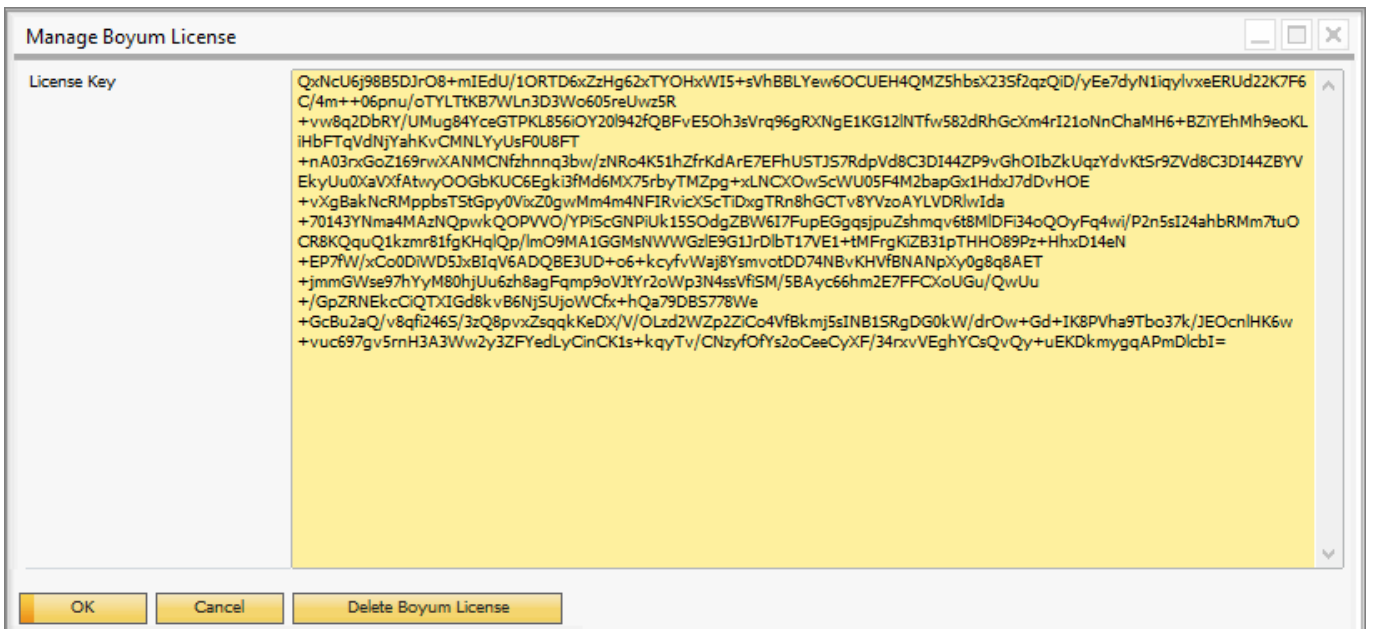
4. Copy all the data.

5. In SAP Business One go to Administration > Add-ons > Produmex Scan > Produmex License Administration and click Manage Boyum License.

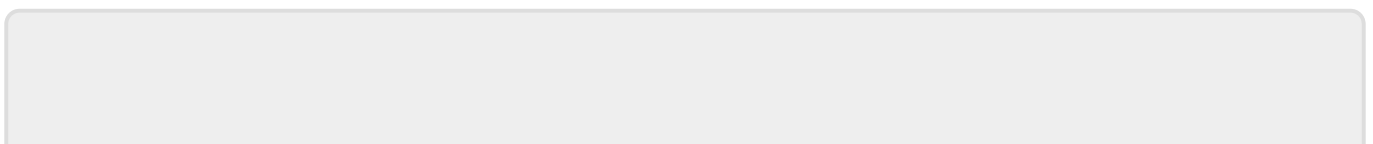


6. Paste your license data into the *License key* field and click OK.

Your license data is imported.



Note: If you purchase additional users or upgrade to a new product version, you must re-import your offline license and **restart the Produmex Service Broker**.



From:

<http://wiki.produmex.name/> -

Permanent link:

<http://wiki.produmex.name/doku.php?id=implementation:scan:licensing>



Last update: **2021/10/26 06:32**