

Produmex Manufacturing Configuration Guide

This document describes the settings of Produmex Manufacturing add-on. It helps to precisely configure Produmex Manufacturing according to the user's needs.

Produmex Manufacturing is an add-on for SAP Business One, a leading enterprise information system for small and mid-sized businesses.

1. Produmex Manufacturing Settings

Open Produmex Manufacturing Settings via the following path: Administration > Add-Ons > Produmex Manufacturing > Produmex Manufacturing Settings

1.1. General Tab

The following table describes the fields that appear in the General tab of the Produmex Manufacturing Settings window.

Field	Description/Activity
Don't translate trace	Obsolete setting.
Advanced Progress Bar	If this checkbox is checked, the system will display the Advanced Progress Bar instead of the Business One Progress Bar. We recommend using the advanced progress bar, as at long processes SBO progress bar can stop.
DisplayTimeUoM	The default Time Unit of Measure for operations. The default value is <i>minutes</i> .
Company Logo	The company's own logo, used in reports. Path to image file requested.
BxBackOffice Server URL	Obsolete setting.
Chart XML Folder	The Work Center Usage form will create an XML file inside this folder, from the data of the WCU chart. If this setting is not set, the system will use the "%AppData%\BX\XML" folder, where %Username% means the user currently logged in.
Produmex Support Business Partner	If an error occurs, a message box is displayed with the error details. You can send the error message to Support from this message box. You will need to set a Business Partner first, and set the Contact Person's email address. Set this Contact Person's code for the Support Business Partner field. You have to set up SBO Mailer for this function to work.
Name of last started Add-On	Internal field, not editable.

Field	Description/Activity
Date of last started Add-On	Internal field, not editable.
Time of last started Add-On	Internal field, not editable.
Use Message Board	The message board lets add-ons communicate with each other. In some cases, events are forwarded to non-Produmex add-ons. In this case, turn this setting off, but in this case communication between Produmex addons will stop.
TxSyncServer URL	Not used in Produmex Manufacturing.
Seconds of last started Add-On	Internal field, not editable.
Grid Row Count Decrease Number	Decrease height of form grid to allow buttons being correctly seen at the bottom of the window. Positive integer needed. Useful if you have SAP 8.8 or higher with a low resolution monitor and the buttons are in the grids.
Close Stuck Add-Ons	If enabled, the add-on kills any other instance of BXPPSAddOn.exe on start. It means that only one Produmex Manufacturing add-on can run at a time. On terminal server environments it is recommended to disable this setting as it kills Produmex Manufacturing add-ons run by other users as well.
Do Not Use GetAsXML	When Produmex Manufacturing request table information, it can use the GetAsXml SAP function.
Copy Bitmaps Manually	If enabled, the icon image files will not be copied from the SBO installation folder when the add-on starts. Enable this setting if the user do not have writing permission for the folder set as the Pictures Folder on the Path tab of General Settings.
Transaction Notification	If enabled, the Transaction Notification Validators are installed when the add-on starts.
Price List For Buy Items	The price list to be used in production order calculations for buy items. Enter the price list name here (<i>OPLN.ListName</i>).
Price List For Make Items	The price list to be used in production order calculation for make items. Enter the price list name here (<i>OPLN.ListName</i>).
BoM Auto Milestone	If this checkbox is checked, milestones are automatically assigned to Operations in BoMs.
Clear SFR cache on start	If enabled, the SFR files are automatically removed every time the add-on starts.
Max Grid Rows	The maximum number of rows, which will be displayed in a grid. If more rows exist, only the first N rows are displayed, where "N" is the Max Grid Rows number. If you want to see the rows currently not shown, either increase this value, or change filter settings for the grid (if applicable).
Operation Time Units in Seconds in DB	Internal field, not editable.
User Defined Formatted Search Support	If this checkbox is checked, user defined formatted search can be used on add-on forms.
Collect Calculation Details	If this setting is disabled, the details of the calculation are not collected and stored in memory, therefore the calculation details cannot be opened from the Calculated Prices form. We recommend to deactivate this option if you get Out of Memory errors at calculation.

1.2. SQL Tab

The following table describes the fields that appear in the SQL tab of the Produmex Manufacturing Settings window.

Field	Description/Activity
ADO.NET SQL Username	The User name for the MS SQL database (usually sa). Scripts use this setting (for example for upgrading a database).
SQL Time out in seconds	SQL Timeout setting for SQL queries.
SQL execution duration alert in milliseconds	If the execution of a query exceeds the time defined in this setting, a warning is added to the log file.
Validator SQL Timeout	This setting controls how long the system will wait for a response for SQL queries. If a timeout is reached, the system will throw an exception, and the query is canceled.

1.3. Logs Tab

The following table describes the fields that appear in the Logs tab of the Produmex Manufacturing Settings window.

Field	Description/Activity
Auto Purge Audit Logs in days	The add-on logs each database transaction in the Audit Log table. This log can be deleted automatically in the interval set here. The default setting is 30 days.
Keep Audit Logs in days	The system deletes the log entries, which are older than the number of days set here.
Log resource strings	If this checkbox is checked, the system logs every Resource String from open forms to a log file. By default log files are located in: %AppData%\Roaming\BX\Logs.
Logging Level	Sets which events are logged. Possible values: <i>Errors Only</i> <i>Errors and Warnings</i> <i>Errors, Warnings, Information</i> <i>Debug (everything)</i> By default log files are located in: %AppData%\Roaming\BX\Logs.
Log Table - max number of days to keep	Log entries that exceed the specified number of days will be deleted from the "@BXPLOG" table.
Log Table - max number of rows to keep	Defines the maximum number of rows that are kept in the "@BXPLOG" table.

1.4. Reports Tab

The following table describes the fields that appear in the Reports tab of the Produmex Manufacturing Settings window.

Field	Description/Activity
Report Layout Folder	The folder which contains the RPT files for reports.
Report Output Folder	The folder which will contain the generated PDF files for reports.

Field	Description/Activity
Paper Size (Reports)	Paper size for reports. Example: a4, a3
Paper Orientation (Reports)	Paper orientation for reports. Example: portrait, landscape
Printer Name (Reports)	Printer name for reports.
Print Preview (Reports)	If enabled, the Preview before print checkbox is checked by default on the Select Report Layout screen.
Preview with Watermark	If enabled, the watermark is printed on print previews as well.

1.5. MRP Tab

The following table describes the fields that appear in the Material Resource Planning tab of the Produmex Manufacturing Settings window.

Field	Description/Activity
Default Outsourcing Lead Time	If an operation is outsourced, and in the item master data no lead time is set for it, then this setting is used as default lead time.
MRPSeek Back Max Days	This setting determines how many days can MRP search backwards from the due date, when searching for free capacity.
MRPSeek Forward Max Days	This setting determines how many days can MRP search forward from the due date, when searching for free capacity.
MRP Production Order Safe Completion Factor	If the production order is allocated using the Forward From Preferred Date strategy, this setting determines the percentage of time the Preferred Date is earlier than the Latest Date. If the setting is 0.2 (20%), and an operation takes 10 days, the Latest Date is 07.30., then the system subtracts 10 days and an extra 20 percent (2 days) from the Latest date, so the Preferred Date becomes 07.18.
Minimal delay for begin	This setting is used to determine the time, when the allocation of resources can be started on the day when the allocation is started. For example, if the Earliest allocation from hours is 1 hour, and the MRP run or allocation is started at 14:00, the allocations are booked after 15:00.
LeadTime is Backorder Time	If enabled, the lead time of an item is considered as backorder time for unfulfillable requirements. New recommendations are created only if there are no planned receipts for the item between today and today + lead time.
MRP Show Debug GUI Dialog	For debugging, use this support window. For everyday use, this must be turned off.
MRP Ignore Non-Approved Orders	If this checkbox is checked, Orders without approval won't be considered at MRP run.
MRP Fragmentation Weight	This setting is used in allocation strategies. Along with the next two settings (MRP Due Date Weight, MRP Total Time Weight), you can set which factors are more important for you, when the allocation strategy assigns operations to resources. When the allocation is started, the system runs multiple simulations, and weighs each simulation with these factors, choosing the best possible outcome. Fragmentation determines how many parts an operation's allocations can be divided into (and how much setup and teardown time it needs). If it is undesirable for you to divide an operation into many parts, increase this value.
MRP Due Date Weight	This determines the importance of the calculated dates being near the due dates.
MRP Total Time Weight	This determines the importance of the operation taking the least possible time (including setup and teardown times).

Field	Description/Activity
MRP Allocation Teardown Gap	You can set (in hours), after how many non-working hours an operation must be stopped. For example, if an operation was started on Friday, and will be finished on Monday, is stopping the operation necessary during the weekend.
MRP Max Delay For Pref. WC(s)	You can set (in seconds), after how much delay MRP is looking for a new work center instead of the preferred work center. If this value is set to 1800 seconds, after 30 minutes of delay (if the preferred work center has another operation allocated, and the current operation can only be allocated after more than 30 minutes), the system will book another work center instead of the preferred work center.
Run MRP in Separate Thread	If this checkbox is checked, MRP will run in a separate thread. Use this if you get RPC_SYS_CALL_FAILED errors during MRP run.
Use multi-dimension allocation	By using this setting, you can use multi-dimension allocations in MRP, which means you can use employees and tools.
Allow rescheduling Production Orders when shift day capacity is shrunk	If enabled, production orders can be rescheduled when the shift day capacity is shrunk, otherwise the shift day capacity can only be shrunken if the capacity change does not affect released production orders. <i>Please note: If there is a production order, that cannot be rescheduled, it is not possible to shrink the shift day capacity regardless of this setting.</i>
MRP export resource plan	If enabled, the MRP result will be exported to an xml file. You can find the xml file in the following folder: C:\Program Files (x86)\SAP\SAP Business One\AddOns\BXP\Produmex Manufacturing. The file name is MRPData-scenario name.
WorkCenter Time Diagram Unit W.	The default unit on work center time diagram.
Always Consider Planned Production Orders	If this setting is enabled, 'Planned' production orders are always considered for items that have Manual Planning set in the Item Master Data, even when production orders are not added as a data source for MRP. <i>Please note that the Always Consider Planned Production Orders global MRP setting has higher priority than the settings in the MRP Scenario.</i> When an MRP scenario wants to ignore production orders, this setting should be disabled.
Allocation window def.length	This setting defines the horizon of an MRP-run. The time scale until receipts and requirements are considered.
Use Produmex Manufacturing MRP	If enabled, the 'Use Produmex Manufacturing MRP' checkbox is checked by default on the Document Data Source window of the MRP wizard, when a new MRP scenario is created.
Force Reallocation If Allocation Strategy Changed	If enabled, the production order is automatically recalculated when the allocation strategy is changed.
Enable drag & drop in Job Scheduling Control Panel	If enabled, the drag&drop function is available on the Job Scheduling Control Panel.

1.6. PDC Tab

The following table describes the fields that appear in the PDC tab of the Produmex Manufacturing Settings window.

Field	Description/Activity
Is Serial Batch PDC Enabled	Enable this checkbox in order to book serial/batch numbers with the Simple PDC Shop-Floor Wizard.
800×600 PDC Wizard	If this checkbox is checked, the PDC Shop-Floor Wizard will run in 800×600 resolution.
HD resolution PDC Wizard	If this checkbox is checked, the PDC Shop-Floor Wizard will run in 1280×720 resolution.
PDC Use direct state	Obsolete setting.
PDC Allow undo	This setting controls whether undoing PDCs is allowed.
PDC Undo Only No Transaction	If this checkbox is checked, you can only undo PDC bookings, which don't have inventory transactions booked.
PDC Too Good Performance Threshold	After PDC booking, the system calculates the worker's performance. You can set here (in percents, so 0,9 means 90%) the threshold for too good performance. If you set 1.2 here, and the worker's performance is better than 120%, a message will be displayed after PDC booking.
PDC Too Bad Performance Threshold	This setting works the same way as the Too Good Performance Threshold setting, except it will display a message for performances worse than the threshold.
PDC book duration in Break bookings	If this checkbox is unchecked, the system will calculate time intervals for Break Bookings. This means you don't have to book Partial Completion before Break booking.
Use Operation Parameters	If this checkbox is checked, Operation parameters from the Parameters tab are used. It is used for Quality Assurance purpose in the production process.
GoodsIssue Series Name	Name of the Series to use for Goods Issue generated by PDC
ReceiptFromProd. Series Name	Name of the Series to use for Receipt from Production generated by PDC
IssueForProduction Series Name	Name of the Series to use for Issue for Production generated by PDC
GoodsReceipt Series Name	Name of the Series to use for Goods Receipt generated by PDC
PDCProcessor Last Run Date	Shows the PDC processor last run Date (not editable)
PDCProcessor Last Run Time	Shows the PDC processor last run Time (not editable)
PDCProcessor Retry Times	If the PDC processor fails at a transaction, it will retry several times, according to the shown Retry Times (in minutes, not editable)
Managing Rejected Batched PDC Transactions	If this checkbox is checked, enables Managing Rejected Batched PDC Transactions menu in the Production > PDC sub-menu, which provides solutions for fixing unsuccessful PDC transactions because of low stock quantity
Default Production Warehouse for Managing Rejected Batched PDC Transactions	Name of the default production Warehouse on Managing Rejected Batched PDC Transactions
Default Base Item Warehouse for Managing Rejected Batched PDC Transactions	Name of the default Base Item Warehouse on Managing Rejected Batched PDC Transactions
Employee Card Code Field	If you don't want to use SAP default employee number field for PDC employee identification, you can set a user field here (for example U_XXXEmpID).
Default Attendance Model	If the shift plan UDF field is not set for an employee in the employee master data, the setting from here will be used.

Field	Description/Activity
PDCProcessor Block Start Date	Obsolete setting.
PDCProcessor Block Start Time	Obsolete setting.
PDCProcessor Block Minutes	Obsolete setting.
Profit Center for Managing Rejected Batched PDC Transactions	Profit Center used in transactions on Managing Rejected Batched PDC Transactions
Account Code for Managing Rejected Batched PDC Transactions	Account Code used in transactions on Managing Rejected Batched PDC Transactions
Use Production Order Doc Entry and Line for PDC	If turned off, you can choose the operations in PDC Wizard or the office terminal based on allocation ids. If turned on, you can set the operation in the PDC forms like Production order docentryproduction order line number-work center code (for example 511-2WC01).
No Work Center Change with Use Production Order Doc Entry and Line for PDC	Related to the 'Use Production Order Doc Entry and Line for PDC' setting. If both settings are enabled,work center code should be included in the Identification Code when starting a booking on the Simple PDC Shop-Floor Wizard.
PDC Delete Allocation Last Date	The last date when the 'Free Allocations by PDC Bookings based on User Query' tool run.
FlexProdScheduler Last Run Date	Obsolete setting.
FlexProdScheduler Last Run Time	Obsolete setting.
Enable Lost Allocations in PDC Shop-Floor Wizard	Obsolete setting.
PDC Processor Interval Time	Defines the PDC processor run frequency.
PDC Material Batch Overbooking Permission	Defines whether material overbooking is allowed or not. Possible values: <i>VVOverbookingPermission_NotAllowed</i> : Material overbooking is not allowed. <i>VVOverbookingPermission_ShowWarning</i> : Material overbooking is allowed, but the system shows a warning. <i>VVOverbookingPermission_Allowed</i> : Material overbooking is allowed.

1.7. Production Order Tab

The following table describes the fields that appear in the Production Order tab of the Produmex Manufacturing Settings window.

Field	Description/Activity
Production Order Operation Is Editable if Has Bookings	If enabled, the quality control parameters of a production order operation can be edited even if it has PDC bookings, otherwise only the parameters of production order operations without PDC bookings can be edited.
ProdOrder Allow Simplified Outsourcing	If this checkbox is checked, you can use one step outsourcing without unfinished products.
MaCC separated outsourcing	If enabled, the outsourcing price is not included in the material cost during the cost calculation.

Field	Description/Activity
Run ProdOrd allocation in thread	If this setting is on, the Production Order allocation will run in a separate thread. This setting prevents RPC_E_SYS_CALL_FAILED errors from occurring during allocation.
ProdOrder Row Slowness Limit	Obsolete setting.
BoM Row Slowness Limit	Obsolete setting.
Production Order Consider Start Date	If enabled, the MRP scheduling logic of Produmex Manufacturing considers the <i>Start Date</i> of the production order. Otherwise the <i>Start Date</i> is not taken into account during MRP planning.
Rejected Warehouse (BoM)	This is the default rejected warehouse for BoMs. It will be set automatically when you create the BoM.
Default ProdOrd. Allocation Strategy	When creating a production order, the allocation strategy will be set to this default setting. It is only valid for manually created production orders, MRP doesn't consider this setting.
Extra validation after mass PrO	If enabled, the system runs an extra validation for database consistency after production orders were created on the Order Recommendation form or with the Procurement Confirmation wizard.
Don't reload Production Order after Add	After the production order is added, it is reopened by default. If you turn this setting on, after adding a production order, an empty Production Order form will be displayed.
Immediate Release after Add	Production orders will be immediately set to 'Released' after adding them.
Cockpit UDFs for Filtering	List of user-defined fields to be used for filtering in the Production Management Cockpit. UDFs' names from OWOR table should be separated by a comma.
Preliminary Features	If this checkbox is checked, unstable built-in preliminary features will be activated. Use with caution.
Automatic Generation of Outsourcing Purchase Orders on Production Order Release	When releasing a production order with outsourcing, the outsourcing purchase orders will be generated automatically.
Reset shrinked Production Order's scroll bar state	If the window size is very small, after allocation the cursor jumps back to the front of the row.
Include Outsource Operations in Job Requirements Report	If you turn this setting on, Outsourced Operations will be included in Job Requirements Reports.
Use Missing Capacity Report	When this setting is enabled, the system records missing capacity data for production orders and production order recommendations in the '@BXPmiscaprep' table after each MRP run. It is also possible to open a missing capacity report for production orders from the Production Management Cockpit or the MRP error list.
Compatibility mode for ActiveX components	Enable this setting in order to support ActiveX components.
JSCP align max days	Defines the maximum duration of the aligning process that is indicated by selecting the 'Align allocations' or the 'Align all allocations' option from the right-click menu of a work center line on the Job Scheduling Control Panel.

Field	Description/Activity
JSCP align gap minutes	Defines the maximum gap length the system eliminates duration of the aligning process that is indicated by selecting the 'Align allocations' option from the right-click menu of a work center line on the Job Scheduling Control Panel.
Rework Order special BoM item code	Add the item code of the main product of the rework BoM.

1.8. Master Data Tab

The following table describes the fields that appear in the Master Data tab of the Produmex Manufacturing Settings window.

Field	Description/Activity
Item Group for Operation	When you start the add-on for the first time, it will create an item group for operations automatically. You can set here what the name of this item group should be.
Default Warehouse for Operation Item	If the SAP Business One setting 'Auto add all warehouses' is not enabled, the default warehouse set on this field is added as the warehouse for the operation items.
Operation Item Valuation Method	If this field is set, only operation groups using this valuation method are allowed for operations. If a wrong valuation method is set for the operation item in the Item Master Data, a warning message is displayed. Default value: S (Standard) Possible values: S = Standard A = Moving Average F = FIFO
Null InHouse Quantity for Outsourcing	If you enable this setting the field 'In House Quantity' on the BoM Operation Details form will be set to 0. If this setting is disabled, the In House Quantity will include the default value.
Use Allocation Window Def. Length for Material Account Date	If you turn this setting on, the Material Account form will only load data until the current date + allocation window length. The allocation window length can be set on the MRP tab of Produmex Manufacturing Settings
BoM Tree Custom Columns	It is possible to add a custom column to the BoM Tree report. Add the code of a field from the Item Master Data. Make sure that you add an user field with the U_ prefix.
Sales Calc. Use Schema for recursed BoMs as well	If enabled, the 'Use Schema for recursed BoMs as well' checkbox is checked by default on the Calculate Sales Order form.
Sales Calc. Trace Calculated Values	If enabled, the 'Trace Calculated Values' checkbox is checked by default on the Calculate Sales Order form.
Sales Calc. Override Child BoM Base Quantities	If enabled, the 'Override Child BoM Base Quantities' checkbox is checked by default on the Calculate Sales Order form.
BoM Branch Validation Level	None - The default SAP B1 validation, which does not enforce MultiBranch consistency. Warning - The add-on performs MultiBranch consistency validation in BOMs, shows a warning message, but allows the user to save data. Strict - The add-on performs MultiBranch consistency validation in BOMs, shows an error message, and does not allow the user to save data.

1.9. MTO Tab

The following table describes the fields that appear in the Make To Order tab of the Produmex Manufacturing Settings window.

Field	Description/Activity
Allow MTO OrderType Change	If you turn on this setting, it is possible to change the order type (purchase, production) for MTO recommendations, otherwise an error message will appear when order type is changed.
Skip MTO from Normal MRP	Items that are planned with MTO will not be considered by "normal" MRP.
MTO Delay Late Error Threshold	The "too late" threshold for MTO problem report in sales order.
MTO Delay Early Error Threshold	The "too early" threshold for MTO problem report in sales order.
Show Stock Information	If this setting is on, the actual stock information from item master data will be filled on the recommendations form for MTO scenarios.
MTO from production order	If enabled, an MTO scenario can be initiated from production orders as well, otherwise the MTO scenario can only be created from sales orders.
AutoRoll child MTOs	If enabled, MTO child production orders are automatically aligned if the MTO parent production order is rescheduled.
Move earliest	If enabled, an additional 'Move earliest' button is displayed on the Production Management Cockpit. Press this button to reschedule the selected MTO scenario to the earliest possible start date of the top order.
Move Latest	If enabled, an additional 'Move latest' button is displayed on the Production Management Cockpit. Press this button to reschedule the selected MTO scenario to the latest possible start date of the top order.
Auto Group	If enabled, MTO order recommendations for a given scenario will be grouped. If there is an Order Recommendation Custom Grouping user query defined, the system groups the recommendations based on the rules determined in the user query.
Advanced MTO Recommendation	If enabled, an MTO simulation can be run from Sales Quotations to calculate the available to promise date.
Sales Quotation Simulation Type filter	Defines the type of scenarios that can be included in the Sales Quotation simulation. Possible values: <i>VVMRPSimulationType_All</i> : Every valid MRP and MTO scenario can be included <i>VVMRPSimulationType_MTO</i> : Only valid MTO scenarios can be included. <i>VVMRPSimulationType_Quotation</i> : Only valid MTO scenarios initiated from a Sales Quotation can be included.
MTO quotation horizon	Defines the horizon of the MTO run.

1.10. Thin Client Tab

The following table describes the fields that appear in the Thin Client tab of the Produmex Manufacturing Settings window.

Field	Description/Activity
Default language	The default User Interface language for the Thin Client. Possible values: English, German, Hungarian.
Enable user dependent language	Obsolete setting.
PTM Reason for Log out mandatory	When a log out is booked, the reason must be given. Reasons can be set up at Tools > User-Defined Windows > BXPABSRN.
PTM Enforce In/Out Bookings	It is not allowed to book the same action two times after one another (i.e. no two in or out bookings after each other).
PDC Setup Bookings Enabled	If this setting is enabled, 'Setup' PDC bookings are allowed with the PDC terminals. Otherwise, users cannot start a 'Setup' work, even when there are planned setups for operations.
PDC Custom Validation UQ	Obsolete setting.
PDC Modifiable WC for Start	The system normally selects the first allocated Work Center for an operation. If this setting is enabled, the user can choose another work center instead.
PDC Enforce Planned Setups	The planned setup of an operation can be skipped entirely, unless this parameter is set.
PDC Planned Setups Only	If set, the user is not allowed to start a 'Setup' work for an operation that does not have a planned setup in the production order operation details.
Customization Folder	Obsolete setting.
Enable Automatic Entry Correction on PTM	If this checkbox is checked, double bookings in the same direction can be corrected automatically by the add-on.
Automatic Entry Correction Interval on PTM	If a double log in was booked, and automatic correction is enabled, and the difference between the two in bookings is at least the amount that is set here, then an out booking between the two in bookings is automatically created. The interval is in minutes.
Automatic Entry Correction Duration on PTM	The automatic out booking that is created (see previous setting) will be created this many minutes after the first in booking. The duration is in minutes. Please note: The inserted logout time is in server time.
Disable Leave on Pending Operations on PTM	If the employee has a running job (he booked start job or resume job last), he cannot book out in PTM unless he closes the open job with partial or finish booking.
Show Original Time on Last Action	Should the last action field in PTM show the original or the corrected time.
Sticky Job QuantitiesPage	Obsolete setting.

1.11. Thin Client 2 Tab

The following table describes the fields that appear in the Thin Client 2 tab of the Produmex Manufacturing Settings window.

Field	Description/Activity
Worker can modify bookings	If it is turned on, the workers are able to modify any PDC bookings.
Approver can modify bookings	If it is turned on, the employee with the approver role is able to modify any PDC bookings.
Global idle timeout (seconds)	The timeout in seconds for which if there is no mouse and keyboard event, the booking screen will be returned to the login screen (with losing all changes).

Field	Description/Activity
Global screen timeout (seconds)	The time in seconds for which if there is no change in a page, the booking screen will be returned to the login screen (with losing all changes).
Employee approver role	The role that needs to be assigned to an employee to be regarded as approver.
Employee Workshop Monitor Role	The role that needs to be assigned to an employee to be regarded as work shop monitor employee.
Employee Quality Control Role	The role that needs to be assigned to an employee to be regarded as quality control employee.
Workcenter Admin Role	The role that needs to be assigned to an employee to be regarded as a work center admin.
Enable PDC	Enable the mobile PDC module.
Enable PTM	Enable the mobile PTM module.
Enable QC	Enable the mobile QC module.
Enable Workshop Monitor	Enable the mobile work shop monitor module.
Enable Workcenter Journal	Enable the Workcenter Journal module.
Enable Workcenter Tickets	Enable the Work Center Tickets module.
Enable Legacy Mode in PDC	If enabled, bin location handling is not supported in Produmex PDC.
Pre-fill planned material quantities	If you turn it on, the planned quantities are automatically taken over when booking materials.
Pre-fill planned by-product quantities	If you turn it on, the planned quantities are automatically taken over when booking by-products.
Pre-fill the bin locations quantities with available quantities	If enabled, the material quantity will be prefilled with the available quantity in the bin location on the Material Bin Location Picker screen.
Skip material quantities screen	The quantities screen for booking materials will not be shown if the setting is turned on (automatic material bookings).
Skip by-product quantities screen	The quantities screen for booking by-products will not be shown if the setting is turned on (automatic by-product bookings).
Skip material serial/batch quantities screen	Material serial/batch selector screens will not be shown if turned on.
Skip product serial/batch quantities screen	By-product serial/batch selector screens will not be shown if turned on.
Logout after PDC bookings	The user will be automatically logged out after a PDC booking has been created if turned on.
Enable Partial Book & Stay	If enabled, the user can stay on the partial booking screen after a partial booking is created.
Can insert new materials into production orders	The setting will enable the inserting of not planned materials from the PDC client into the production order. If you turn it on, the user can add non-existing materials to the production order from the mobile client which will be inserted before the operation on which the booking is created.
Login Is Password Protected	If enabled, the employee must enter a password instead of the employee number for login. Add the user field code that contains the password to the 'Employee Card Code' field.
Only Job Bookings On Running Jobs Screen	If disabled, operations with the booking status 'CompletedSetup' are also displayed on the Running Jobs screen.

Field	Description/Activity
Force enter product serial/batch numbers and quantities	If enabled, the user must enter the serial/batch number of the product to receive in order to proceed.
Force enter material serial/batch numbers and quantities	If enabled, the user must enter the batch/serial number of the material to issue in order to proceed.
Enable batch attributes in PDC	If enabled, batch attributes can be defined during a PDC booking. Only enable this setting if you use Produmex WMS integrated with Produmex Manufacturing.
Updateable batch attributes in PDC	If enabled, the user can modify the booked batch attributes in PDC after the booking is processed.
Remarks Template for Issue Resource Transaction	Whenever an issue resource transaction is automatically created by the PDC Processor, the details (work center, employee, PDC booking code, operation, date time of the finished work, duration of the job) of the corresponding PDC booking are entered into the remarks field of the transaction.
Maximum number of co-workers for PDC job	The maximum number of co-workers an employee can select in PDC to work in the same work center and on the same operation. The number of co-workers in PDC can be provided in the <i>Co-workers</i> field and the number in the field cannot be higher than the maximum value defined in this setting. (The <i>Co-workers</i> field is available in the <i>Production Data Collector</i> module in PDC). If no maximum value is defined by the setting, employees are not allowed to select co-workers in PDC and the <i>Co-workers</i> field is disabled in PDC.

1.12. Scheduled Reallocator

The following table describes the fields that appear in the *Scheduled Reallocator* tab of the Produmex Manufacturing Settings window.

Field	Description/Activity
Times	Define the start time of the reallocator. Multiple times can be added here, separated by comma.
Machine Name	Set the name of the computer where the reallocation has to start.
Query Name	Set the query name that returns the DocEntries of the Production orders which have to be reallocated.
Recipient	Set the SBO user who will get a message with the result of the reallocation.
Last Execution	The time of the last execution. <i>Read only field.</i>

1.13. Custom settings tab

Field	Description/Activity
Quote Item Property Number	This setting is only used in custom solutions.

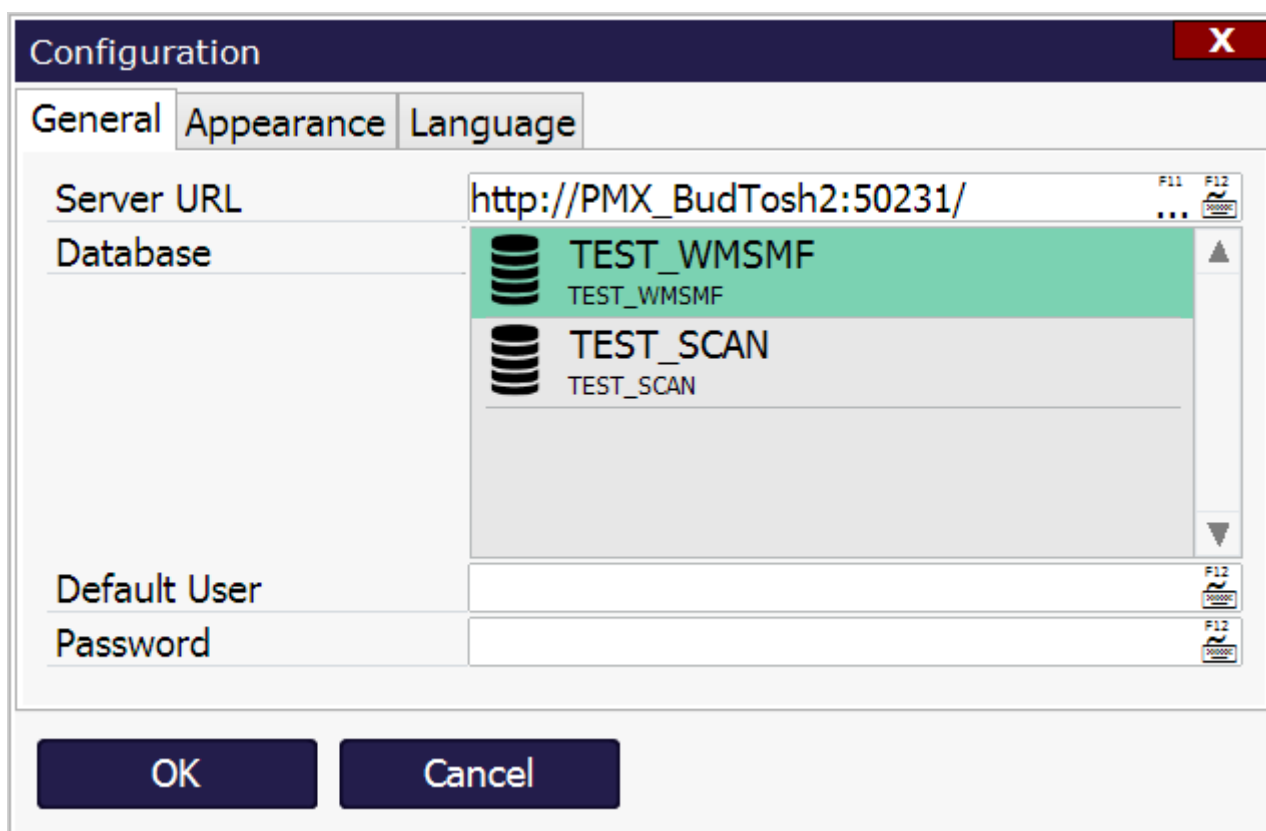
2. Produmex PDC

With the Configuration of Produmex PDC you can set up the parameters of the PDC client. You have to do it on all clients where the software will be used.

2.1. General tab

At the Server URL you have to set the server name or IP address and the port that is set at the service broker configuration. If you press F11 or click '...' (and the Server Discovery Enable setting is turned on), then the client will look for the running service broker service on the local network. If it finds it, it will set it automatically. If there are more servers running, then you will get a list to choose from.

You can set the Default User if the terminal is always used by the same person. You have to enter here the employee ID. If this is filled, there is no login screen in Produmex PDC and the bookings will be created with this employee.

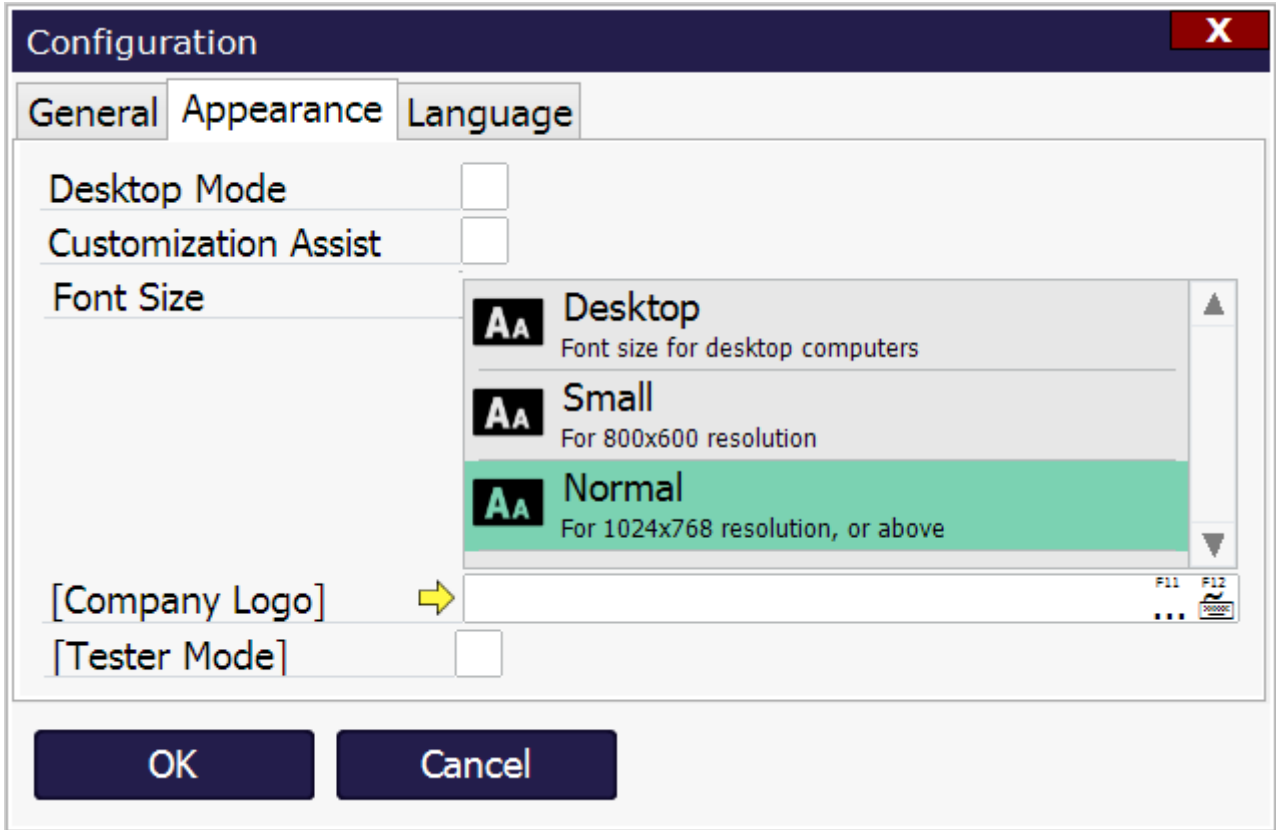


2.2. Appearance tab

On the 'Appearance' tab you can set up the display settings for the client. With the Font Size you can define the size of the fonts that are displayed. If you have a small resolution device (ie. 800x600 or less), use small, otherwise use normal setting.

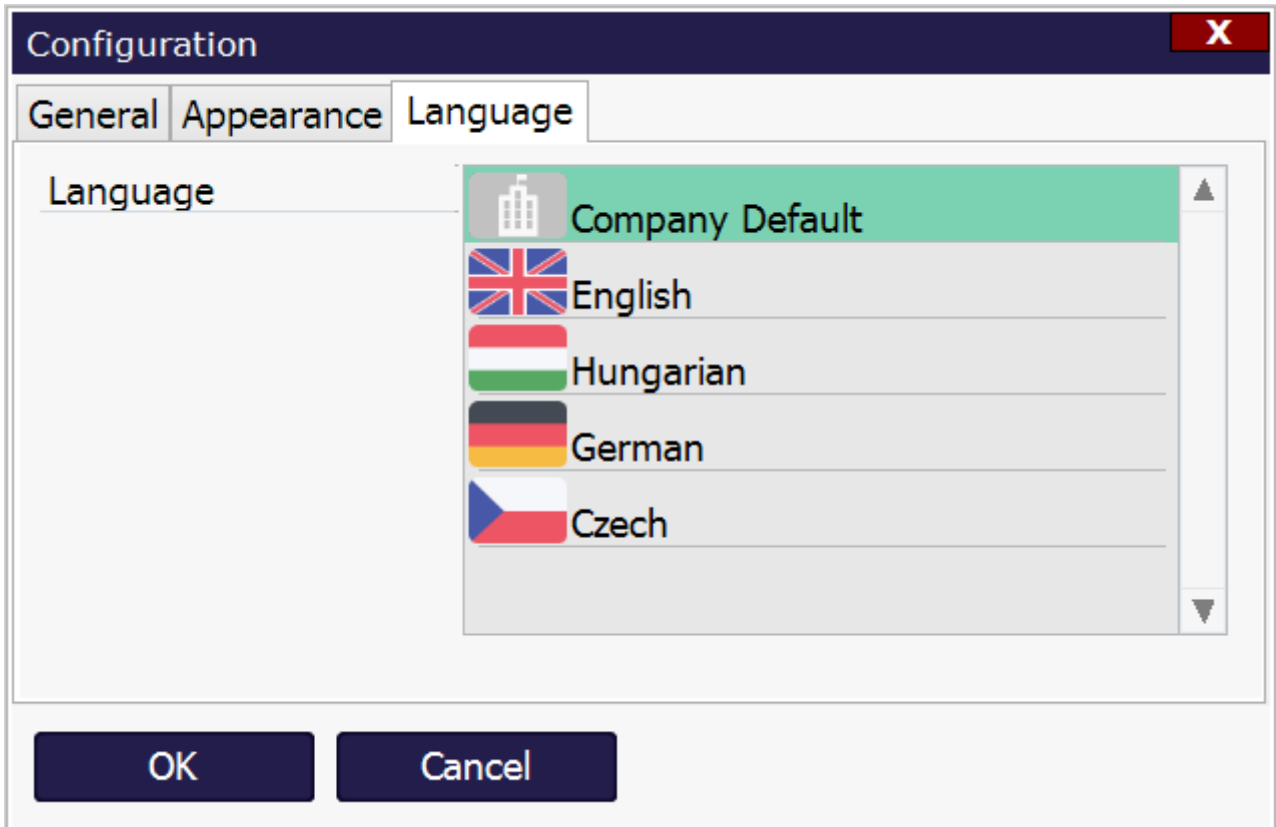
If you turn on Desktop Mode, the window will work similar to a normal desktop application (it will remember window settings, and you can move it by dragging the title bar).

With the Customization Assist setting you can turn on the customization feature in the mobile application.



2.3. Language tab

On the 'Language' tab you can set the language of the mobile client that will be used on this computer.



3. Configurations for the PDC Terminal

There are configurations for production data collection that can be set on the level of a terminal. Specify these settings on the following user tables:

- PDC Terminal Configuration
- PDC Extended Configuration

Open the user tables via the following path: Tools > User-Defined Windows

3.1. PDC Terminal Configuration

On this user table basic configurations can be specified for the PDC terminal.

Code & Name

Unique code/name. Technical values identifying the record.

Simple Job Completion (Y/N)

If set to 'Yes', the Simple Job completion module is enabled on the terminal.

Terminal ID

The terminal ID. Terminals usually display the terminal name on start. It is normally the computer name.

Work Center

The default work center on the terminal.

Last Modif.

The date of the modification can be added on this field.

Simple Job Completion Only (Y/N)

If set to 'Yes', only the 'Simple Job' module can be opened on the terminal regardless of the PDC modules enabled on the [Thin Client 2 tab](#) of Produmex Manufacturing settings. After logging in, the system will automatically proceed with the Simple Job module and will not show the Main menu.

3.2. PDC Extended Configuration

On this user table further configurations can be specified for the PDC terminal. The configurations will be linked to the specified employee and/or work center. It is possible to define multiple configuration lines for an employee/work center. This way different configurations can be set for each employee - work center combination.

Code & Name

Unique code/name identifying the record.

Bin Location

The default bin location for material issues/product receipts. This overrides the default bin location

defined for the work center. Add the AbsEntry value from the OBIN table.

Bin Location Modification (Y/N)

This setting is not currently in use but are reserved for future use. The user can always modify the bin location.

Bin Location Select From List (Y/N)

If enabled, the bin location can be selected from a list on the Complete Job screen.

Comment Visible (Y/N)

If enabled, an additional Comment field is displayed on the 'Complete Job' screen. The added comment is stored in the U_BXPComm field of the @BXPPDCBOOKING table.

Employee ID

The code of the employee. If an employee code is specified, the configurations set on this line will be applied to the given employee only.

Fully Automated Batch Handling (Y/N)

This setting is not currently in use but are reserved for future use.

Fully Automated Material Issuing (Y/N)

This setting is not currently in use but are reserved for future use.

Fully Automated Product Reception (Y/N)

This setting is not currently in use but are reserved for future use.

Manual Job Duration (Y/N)

If enabled, the user can manually enter the number of minutes/hours he/she worked on an operation. When the user enters the duration, the Start time will be calculated automatically with the following formula: {Current Date/Time - Duration}.

Operation Select From List (Y/N)

This setting is not currently in use but are reserved for future use.

Outsourced Operations (Y/N)

If set to 'Yes', bookings for outsourced operations are allowed, otherwise the user cannot create bookings for outsourced operations.

Rejected Quantity (Y/N)

If enabled, the user can enter rejected quantities during the booking, otherwise no rejected quantities are allowed.

Zero By Product Quantity (Y/N)

If enabled, the completed/rejected quantity of the by-product will not be prefilled with the calculated quantity. If disabled, the completed/rejected quantity will be automatically filled for the by-product. The prefilled quantity is calculated as: {Completed/rejected quantity of the main product * Base quantity of the by-product}. Please note: This is applicable only for by-products with 'Manual' issue type.

Work Center

The work center code. If a work center is set, the specified configurations are applied to the work center only.

Work Center Ignore (Y/N)

If enabled, the default work center of the terminal, which was defined in PDC Terminal Configuration, is not taken into account. Otherwise the work center field is automatically populated with default work center of the terminal.

Work Center Modification (Y/N)

If enabled, it is possible to select a different work center than the default work center.

Is Default (Y/N)

Determines that the configurations set in the PDC Extended Configurations user table are the default configurations for the Simple Job module or not. The default configurations will be used when the employee and the selected work center has no PDC settings configured in the PDC Extended configurations user table.

Last Modif.

The date of the modification can be added on this field.

Completion Enabled (Y/N)

If enabled, the employee defined on the **Employee ID** field has the permission to mark operations as completed. By default all employees are allowed to mark operations completed.

From:
<http://wiki.produmex.name/> -

Permanent link:
<http://wiki.produmex.name/doku.php?id=implementation:manufacturing:configuidecomplete&rev=1511445463> 

Last update: **2017/11/23 13:57**